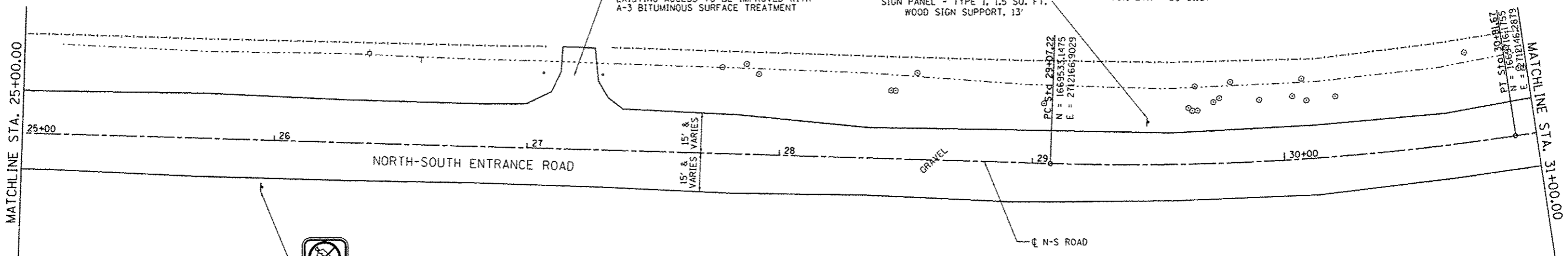
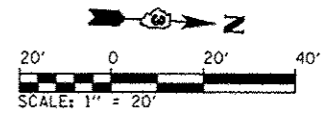


| | |
|-------------------|------|
| PLAN | DATE |
| BY | |
| CHECKED | |
| NO. OF SHEETS | |
| NO. OF THIS SHEET | |
| FILE NAME | |

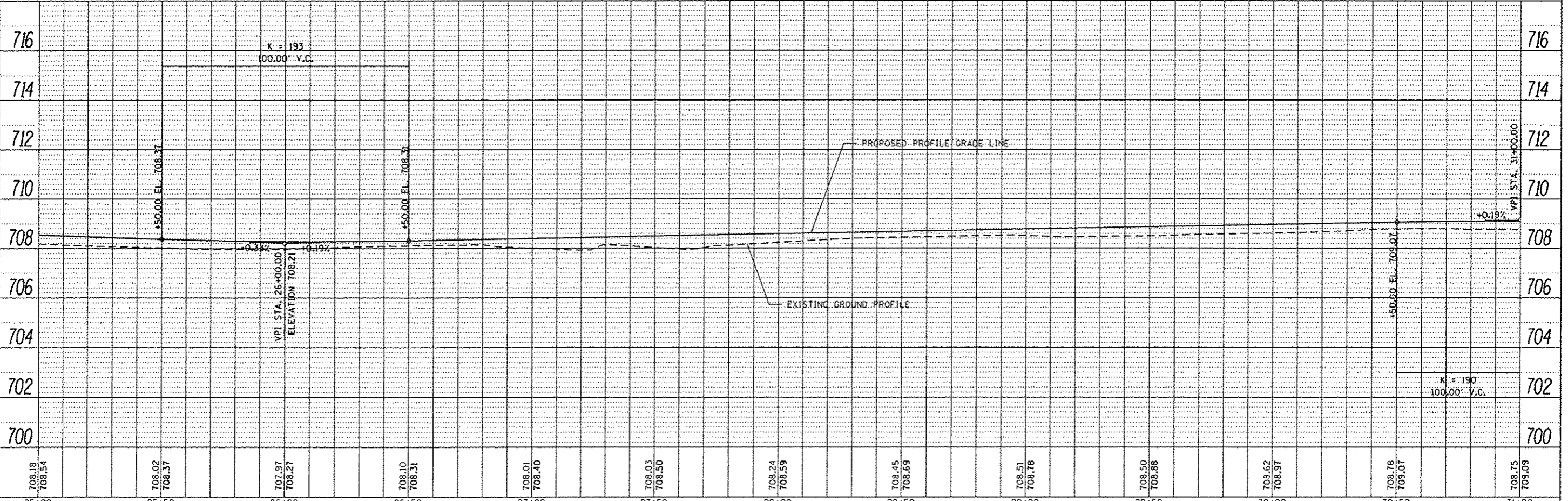
| | |
|-------------------|------|
| PROFILE | DATE |
| BY | |
| CHECKED | |
| NO. OF SHEETS | |
| NO. OF THIS SHEET | |
| FILE NAME | |

PROP. N-S ROAD CURVE-1 DATA
 PI STA. = 29+99.71
 $\Delta = 10^\circ 34' 05''$ (LT)
 $D = 5^\circ 43' 46''$
 $R = 1,000.00'$
 $T = 92.49'$
 $L = 184.45'$
 $E = 4.27'$
 P.C. STA = 29+07.22
 P.T. STA = 30+91.67



(12 x 18)
 STA. 25+96, 19' RT.
 REMOVE SIGN PANEL - TYPE 1, 1.5 SO. FT.
 SIGN PANEL - TYPE 1, 1.5 SO. FT.
 WOOD SIGN SUPPORT, 13'

(12 x 18)
 STA. 29+96, 17' LT.
 REMOVE SIGN PANEL - TYPE 1, 1.5 SO. FT.
 SIGN PANEL - TYPE 1, 1.5 SO. FT.
 WOOD SIGN SUPPORT, 13'



| | | | | | | | | | | | | | |
|---|-----------------------------|-------------------|-----------|---|---|---------------------|--------------------------|--------------------|-----------------|-----------------------|------------------|-------------------|---------------|
| FILE NAME : L:\DOT\1186618\MO...CAAD_Sheets\008 | USER NAME : Matt Overbay | DESIGNED - MJO | REVISED - | STATE OF ILLINOIS DEPARTMENT OF TRANSPORTATION | PLAN AND PROFILE NORTH-SOUTH ROAD IDNR LASALLE LAKE STATE FISH & WILDLIFE AREA | | | | F.A. RTE. : N/A | SECTION : PARKS ROADS | COUNTY : LASALLE | TOTAL SHEETS : 20 | SHEET NO. : 8 |
| SHT_PLNPROF | PLOT SCALE : 40.0000' / in. | CHECKED - SPH | REVISED - | | SCALE : 1" = 20' | SHEET 2 OF 3 SHEETS | STA. 25+00 TO STA. 31+00 | CONTRACT NO. 46254 | | | | | |
| | PLOT DATE : 2/11/2013 | DATE : 10/26/2012 | REVISED - | | ILLINOIS FED. AID PROJECT | | | | | | | | |
| | | | | | | | | | | | | | |