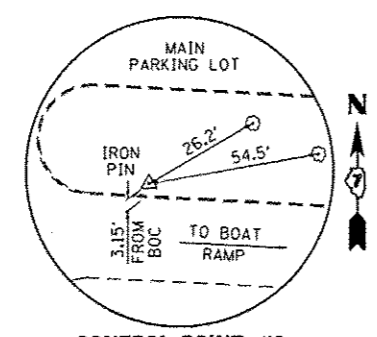
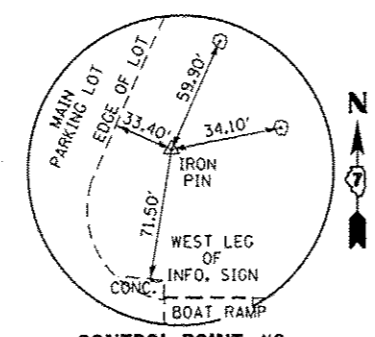


CONTROL POINT #1
 N: 811231.476
 E: 991525.464
 ELEV. = 511.860



CONTROL POINT #2
 N: 810791.643
 E: 991366.774
 ELEV. = 513.945



CONTROL POINT #3
 N: 810918.483
 E: 991606.660
 ELEV. = 513.340

BENCHMARKS:
 BM "SOUTH-1"
 COTTON SPINDLE IN SOUTH FACE OF LP @ WEST EDGE OF MAIN PARKING LOT
 ELEV. = 513.37
 BM "SOUTH-2"
 R.R. SPIKE IN NORTH FACE PP @ INTERSECTION 300E/300N
 ELEV. = 517.18

FILE NAME :	USER NAME : Brian Bond	DESIGNED - BMB	REVISED -	STATE OF ILLINOIS DEPARTMENT OF TRANSPORTATION	SITE PLAN - SOUTH DAY USE & BOAT ACCESS AREA NEWTON LAKE STATE FISH AND WILDLIFE AREA				F.A. RTE.	SECTION	COUNTY	TOTAL SHEETS	SHEET NO.
Default	46255.SitePlan - South.dgn	DRAWN - RAH	REVISED -		SCALE: AS NOTED	SHEET	OF	SHEETS	STA.	TO STA.	JASPER	66	32
	PLOT SCALE = 200.0000' / in.	CHECKED - JMM	REVISED -										
	PLOT DATE = 3/29/2013	DATE - 3/29/2013	REVISED -										
CONTRACT NO. 46255											ILLINOIS FED. AID PROJECT		