

DATE	
BY	
PROJECT	
PLANT	
NOTE BOOK	
NO.	
FILE NAME	

DATE	
BY	
PROJECT	
PROFILE	
NOTE BOOK	
NO.	
FILE NAME	

GRADING AND SHAPING DITCHES, 25 L.F. (GRADE FROM PROPOSED F.E.S. TO EXIST. DITCH LINE)

STONE RIPRAP, CLASS A3
7 SO. YD.

STA. 10+10.94
43.37' LT.

PIPE CULVERT, CLASS A, TYPE 1 15"
68 L.F. @ 0.50%
T.B.F. = 10 CU. YD.

BEGIN IMPROVEMENTS
STA. 10+10.00

PIPE CULVERT REMOVAL
69 L.F.

STA. 10+26.41
26.29' RT.

STA. 10+10.49
44.93' RT.

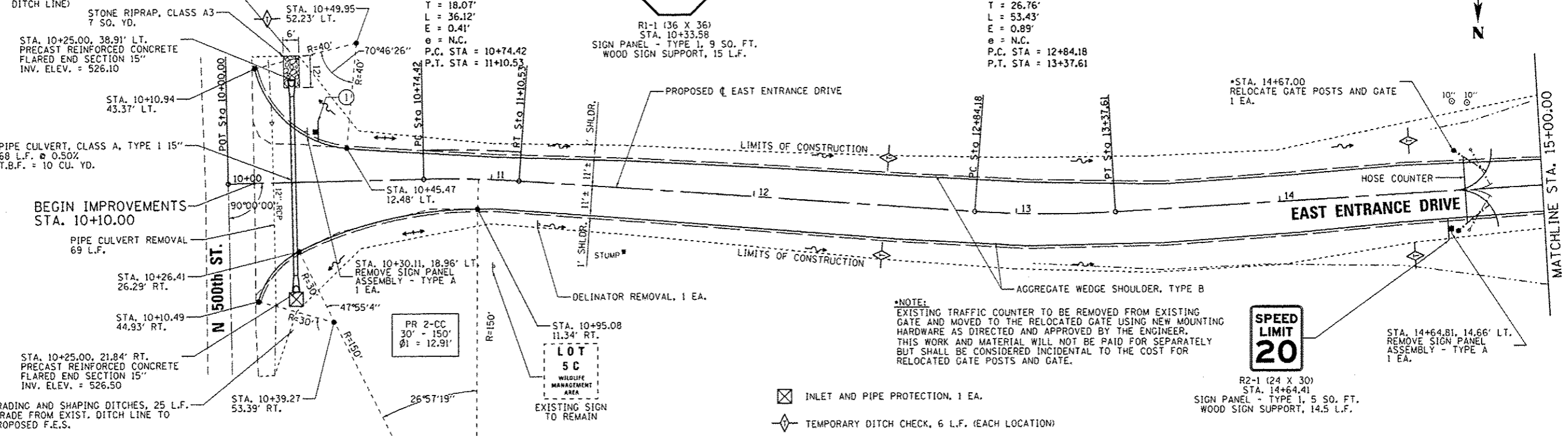
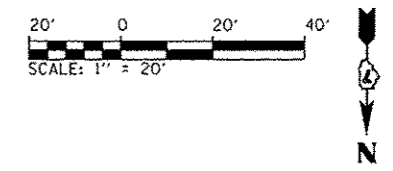
STA. 10+25.00, 21.84' RT.
PRECAST REINFORCED CONCRETE
FLARED END SECTION 15"
INV. ELEV. = 526.50

GRADING AND SHAPING DITCHES, 25 L.F. (GRADE FROM EXIST. DITCH LINE TO PROPOSED F.E.S.)

PROP. CL EAST ENTRANCE ROAD
CURVE 1 DATA
PI STA. = 10+92.49
 $\Delta = 5^\circ 10' 24''$ (RT)
D = 14' 19' 26"
R = 400.00'
T = 18.07'
L = 36.12'
E = 0.41'
 $\theta =$ N.C.
P.C. STA = 10+74.42
P.T. STA = 11+10.53

STOP
R1-1 (36 X 36)
STA. 10+33.58
SIGN PANEL - TYPE 1, 9 SO. FT.
WOOD SIGN SUPPORT, 15 L.F.

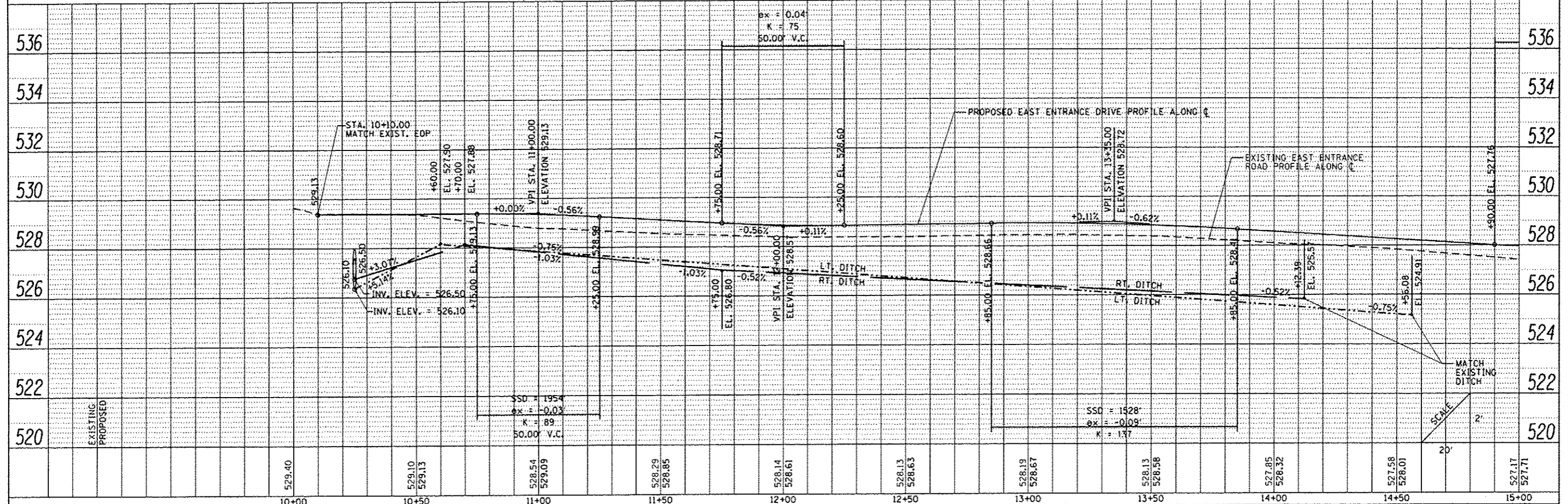
PROP. CL EAST ENTRANCE ROAD
CURVE 2 DATA
PI STA. = 13+10.94
 $\Delta = 7^\circ 39' 13''$ (LT)
D = 14' 19' 26"
R = 400.00'
T = 26.76'
L = 53.43'
E = 0.89'
 $\theta =$ N.C.
P.C. STA = 12+84.18
P.T. STA = 13+37.61



*NOTE:
EXISTING TRAFFIC COUNTER TO BE REMOVED FROM EXISTING GATE AND MOVED TO THE RELOCATED GATE USING NEW MOUNTING HARDWARE AS DIRECTED AND APPROVED BY THE ENGINEER. THIS WORK AND MATERIAL WILL NOT BE PAID FOR SEPARATELY BUT SHALL BE CONSIDERED INCIDENTAL TO THE COST FOR RELOCATED GATE POSTS AND GATE.

SPEED LIMIT 20

- INLET AND PIPE PROTECTION, 1 EA.
- TEMPORARY DITCH CHECK, 6 L.F. (EACH LOCATION)



FILE NAME:	USER NAME: Brian Bond	DESIGNED: BMB	REVISED:	EAST ENTRANCE DRIVE - PLAN & PROFILE SHEET		F.A. RTE.:	SECTION:	COUNTY:	TOTAL SHEET NO.:
Default	2255_PMP_East_025.dgn	DRAWN: RAH	REVISED:	NEWTON LAKE STATE FISH AND WILDLIFE AREA		N/A	PARKS ROADS	JASPER	66 46
	PLOT SCALE: 48.0000' / in.	CHECKED: JMM	REVISED:	SCALE: AS NOTED SHEET 1 OF 5 SHEETS STA. 10+00 TO STA. 15+00					CONTRACT NO. 46255
	PLOT DATE: 3/29/2013	DATE: 3/29/2013	REVISED:						ILLINOIS FED. AID PROJECT