

06-14-13 LETTING ITEM 235

STATE OF ILLINOIS
DEPARTMENT OF TRANSPORTATION

DIVISION OF HIGHWAYS

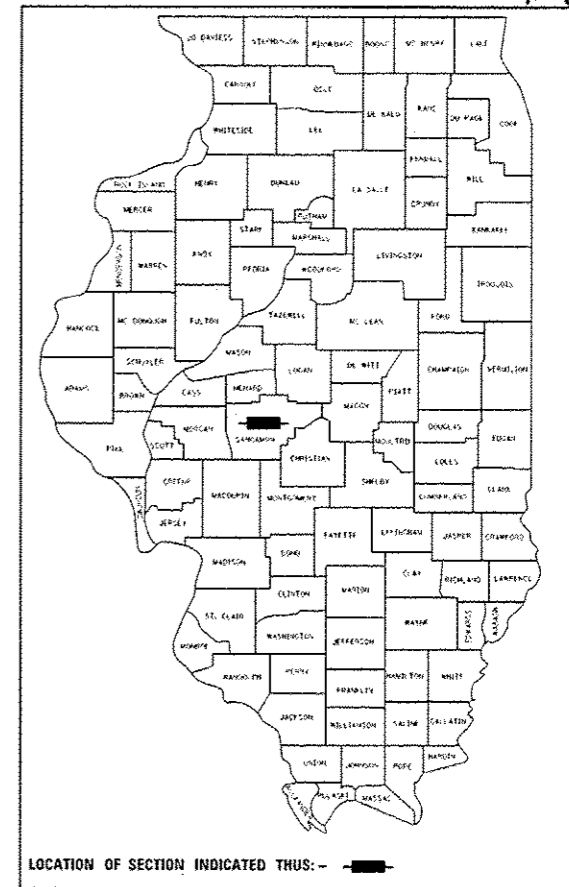
**PROPOSED
HIGHWAY PLANS**

IDOT
PARK ROADS
LINCOLN S TOMB SITE RENOVATIONS
SANGAMON COUNTY
C-30-021-13

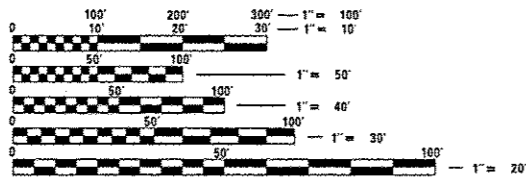
F.A. RTE.	SECTION	COUNTY	TOTAL SHEETS	SHEET NO.
	PARK ROADS	SANGAMON	6	1
		ILLINOIS	CONTRACT NO. 46289	

INDEX OF SHEETS

SHEET NO.	SHEET TITLE
1	COVER SHEET
2	SUMMARY OF QUANTITIES & GENERAL NOTES
3	SCHEDULE OF QUANTITIES
4	CONSTRUCTION DETAILS
5	PLAN SHEET STATION 200+00 - 201+00
6	PLAN SHEET STATION 201+00 - 205+00



LOCATION OF SECTION INDICATED THUS: - [black box symbol]

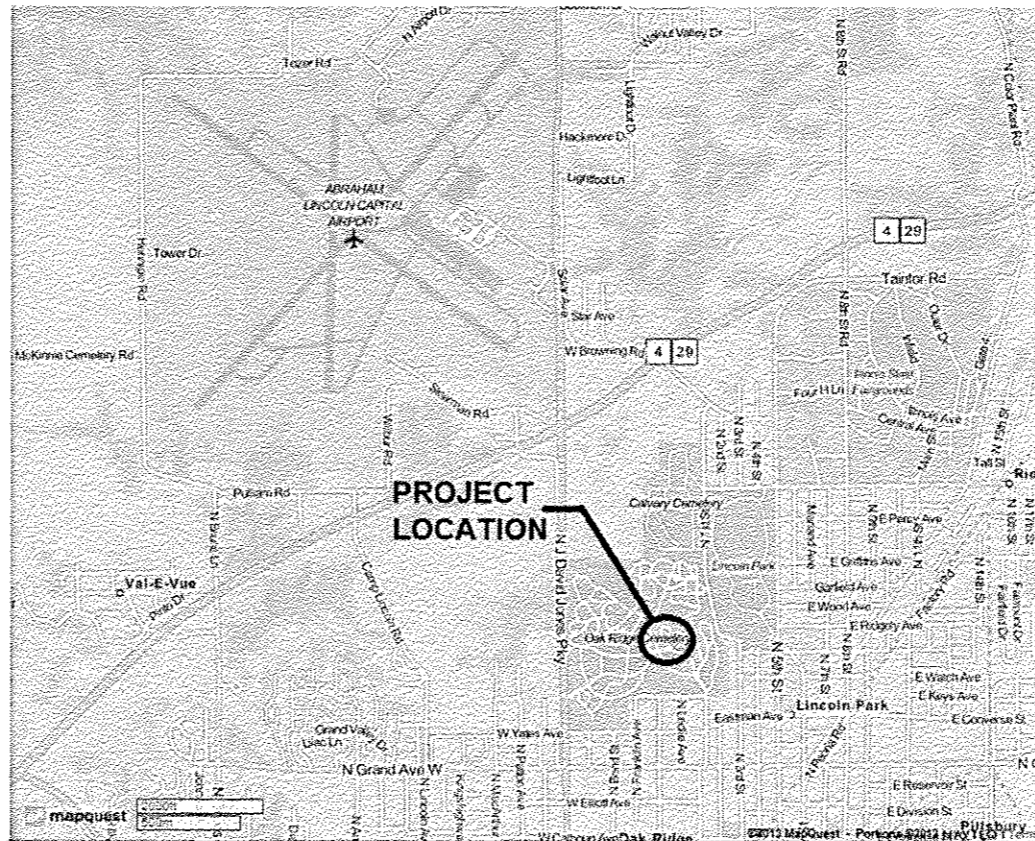


FULL SIZE PLANS HAVE BEEN PREPARED USING STANDARD ENGINEERING SCALES. REDUCED SIZED PLANS WILL NOT CONFORM TO STANDARD SCALES. IN MAKING MEASUREMENTS ON REDUCED PLANS, THE ABOVE SCALES MAY BE USED.

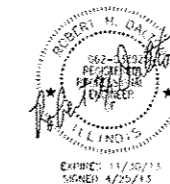
J.U.L.I.E.
JOINT UTILITY LOCATION INFORMATION FOR EXCAVATION
1-800-892-0123
OR 811

PROJECT ENGINEER: LANCE KIDD
PROJECT MANAGER: LANCE KIDD

CONTRACT NO. 46289



SPRINGFIELD, IL
TOWNSHIP 16N
RANGE 5W



STATE OF ILLINOIS
DEPARTMENT OF TRANSPORTATION
DIVISION OF HIGHWAYS

SUBMITTED _____ 20 _____

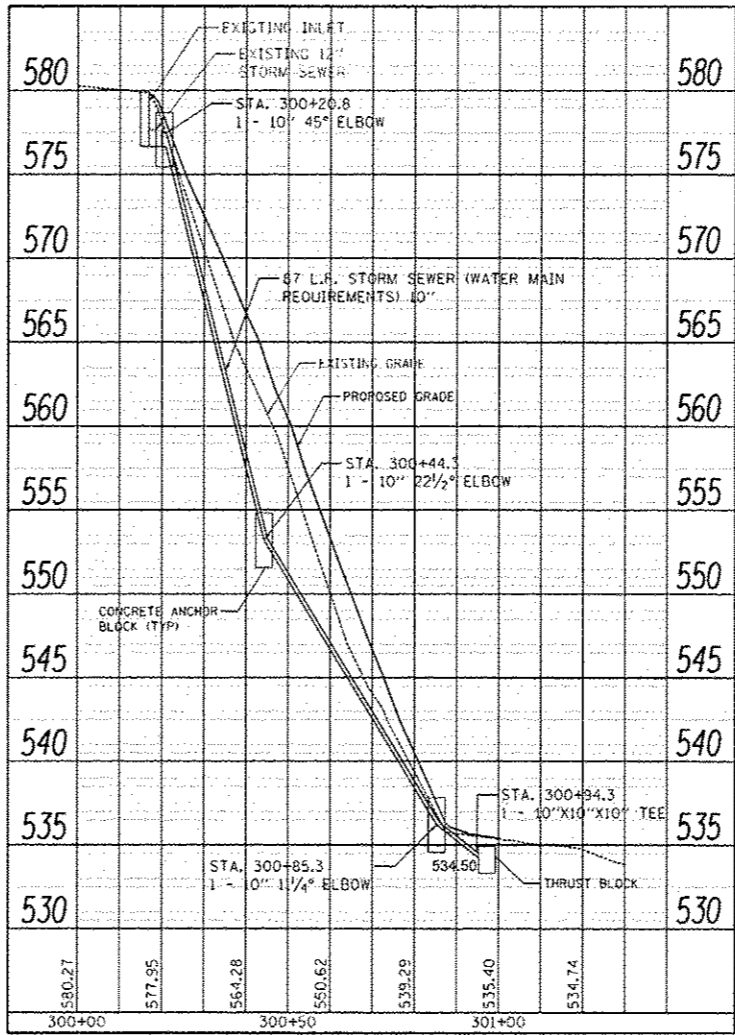
DEPUTY DIRECTOR OF HIGHWAYS, REGION ENGINEER
_____ 20 _____

ENGINEER OF DESIGN AND ENVIRONMENT
_____ 20 _____

DIRECTOR OF HIGHWAYS, CHIEF ENGINEER

**PRINTED BY THE AUTHORITY
OF THE STATE OF ILLINOIS**

SUMMARY OF QUANTITIES			URBAN
CODE	PAY ITEM	UNITS	100% STATE QUANTITY
20100110	TREE REMOVAL (6 TO 15 UNITS DIAMETER)	UNIT	77
20100210	TREE REMOVAL (OVER 15 UNITS DIAMETER)	UNIT	36
21101615	TOPSOIL FURNISH AND PLACE, 4"	SQ YD	392
25000100	SEEDING, CLASS 1	ACRE	0.1
25000400	NITROGEN FERTILIZER NUTRIENT	POUND	8
25000500	PHOSPHORUS FERTILIZER NUTRIENT	POUND	9
25000600	POTASSIUM FERTILIZER NUTRIENT	POUND	9
25000700	AGRICULTURAL GROUND LIME/STONE	TON	0.2
25100630	EROSION CONTROL BLANKET	SQ YD	400
28000400	PERIMETER EROSION BARRIER	FOOT	221
40300100	BITUMINOUS MATERIALS (PRIME COAT)	GALLON	272
40300300	BITUMINOUS MATERIALS (COVER AND SEAL COATS)	GALLON	507
40300500	COVER COAT AGGREGATE	TON	7.2
40300600	SEAL COAT AGGREGATE	TON	7.2
40603315	HOT-MIX ASPHALT SURFACE COURSE, MIX "C", N70	TON	55
44000157	HOT-MIX ASPHALT SURFACE REMOVAL, 2"	SQ YD	489
*44201323	CLASS C PATCHES, TYPE IV, 7 INCH	SQ YD	25
45100200	CRACK FILLING	POUND	1100
54213445	END SECTIONS 10"	EACH	2
60100060	CONCRETE HEADWALLS FOR PIPE DRAINS	EACH	1
60100905	PIPE DRAINS 4"	FOOT	160
*60108100	PIPE UNDERDRAINS 4" (SPECIAL)	FOOT	126
60221100	MANHOLES, TYPE A, 5'-DIAMETER, TYPE 1 FRAME, CLOSED LID	EACH	1
60600605	CONCRETE CURB, TYPE B	FOOT	23
*60900515	CONCRETE THRUST BLOCKS	EACH	1
*61140900	STORM SEWERS (SPECIAL), 24"	FOOT	110
67100100	MOBILIZATION	L SUM	1
72000100	SIGN PANEL - TYPE 1	SQ FT	12.5
73000100	WOOD SIGN SUPPORT	FOOT	30
78000100	THERMOPLASTIC PAVEMENT MARKING - LETTERS AND SYMBOLS	SQ FT	18.4
78000200	THERMOPLASTIC PAVEMENT MARKING - LINE 4"	FOOT	2273
78000400	THERMOPLASTIC PAVEMENT MARKING - LINE 6"	FOOT	147
78000650	THERMOPLASTIC PAVEMENT MARKING - LINE 24"	FOOT	19
78300100	PAVEMENT MARKING REMOVAL	SQ FT	861
*X0323622	AGGREGATE BACKFILL	TON	367
*X0325379	DIRECTIONAL BORING	FOOT	75
*X0327037	SPECIAL GRATE NO. 1	EACH	1
*X0327174	CAST-IN-PLACE CONCRETE WALL	SO FT	39
*X0327308	PARKING LOT SEAL COAT	GALLON	1341
*X2010400	STUMP REMOVAL ONLY	UNIT	36
*X2020410	EARTH EXCAVATION (SPECIAL)	CU YD	82
*X610004	DUCTILE IRON WATER MAIN FITTINGS	POUND	820
*X6023102	MANHOLES, TYPE A, 5'-DIAMETER, TYPE 1 FRAME, CLOSED LID, SPECIAL	EACH	1
*X7240300	SIGN REMOVAL	EACH	1



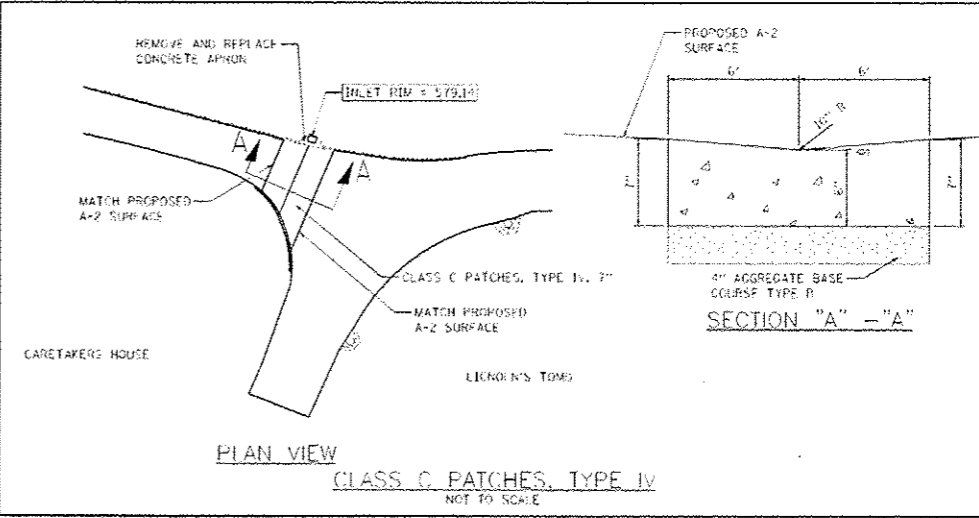
STORM SEWER PROFILE

LIST OF STANDARDS

280001-07	TEMPORARY EROSION CONTROL SYSTEM
542401-01	METAL END SECTION FOR PIPE CULVERTS
601001-04	SUB-SURFACE DRAINS
606001-05	CONCRETE CURB TYPE B AND COMBINATION CURB AND GUTTER
720001-01	SIGN PANEL MOUNTING DETAILS
720006-03	SIGN PANEL ERECTION DETAILS
780001-05	TYPICAL PAVEMENT MARKINGS
701001-02	OFF-ROAD OPERATIONS, 2L, 2W, MOPE THAT IS 15' (4.5 m) AWAY
701006-04	OFF-ROAD OPERATIONS, 2L, 2W, 15' (4.5 m) TO 24' (600 m) FROM PAVEMENT EDGE
701301-04	LANE CLOSURE, 2L, 2W, SHORT TIME OPERATIONS
701501-06	URBAN LANE CLOSURE, 2L, 2W, UNDIVIDED
701901-02	TRAFFIC CONTROL DEVICES

- ### GENERAL NOTES
- ALL ELEVATIONS ARE REFERENCED TO ELEVATIONS ESTABLISHED BY VASCONCELLES ENGINEERING CORP.
 - WHERE SECTION OR SUBSECTION MONUMENTS ARE ENCOUNTERED, THE ENGINEER SHALL BE NOTIFIED BEFORE SUCH MONUMENTS ARE REMOVED. THE CONTRACTOR SHALL PROTECT AND CAREFULLY PRESERVE ALL PROPERTY MARKERS AND MONUMENTS UNTIL THE OWNER AND AUTHORIZED SURVEYOR OR AGENT HAS WITNESSED OR OTHERWISE REFERENCED THEIR LOCATION. IF THE ENGINEER DECIDES TO HAVE THE CONTRACTOR RESET THE MONUMENT, THIS WORK WILL BE PAID FOR IN ACCORDANCE WITH ARTICLE 109.04.
 - THE CONTRACTOR SHALL CONTACT J.U.L.I.E. PRIOR TO ANY EXCAVATION TO HAVE ALL PUBLIC AND PRIVATE UTILITIES LOCATED.
 - THE CONTRACTOR SHALL BE RESPONSIBLE FOR PROTECTING UTILITY PROPERTY FROM CONSTRUCTION OPERATIONS AS OUTLINED IN ARTICLE 107.26 OF THE STANDARD SPECIFICATIONS. THE J.U.L.I.E. NUMBER IS (800) 892-0123. A MINIMUM OF 48 HOURS ADVANCE NOTICE IS REQUIRED. SEE SPECIAL PROVISIONS FOR STATUS OF UTILITIES, WITH UTILITY COMPANIES LISTED.
 - ANY REFERENCE TO THE STANDARDS THROUGHOUT THE PLANS SHALL BE INTERPRETED TO BE THE LATEST STANDARDS OF THE DEPARTMENT AS INCLUDED IN THE PLANS.
 - ALL DETAILS IN THE PLANS SHALL GOVERN CONSTRUCTION OF THIS PROJECT, AND IN CASE OF CONFLICT WITH ANY STANDARD DRAWINGS INCLUDED, THE SAID DETAILS SHALL TAKE PRECEDENCE AND GOVERN.

*X7240600	REMOVE AND RE-ERECT EXISTING SIGN	EACH	1
*X8409000	CONDUIT PUSHED, 4" DIA., PVC SCHEDULE 80	FOOT	75
*8028390	UNDERGROUND CONDUIT, PVC, 4" DIA.	FOOT	75
*20010600	CLEANING DRAINAGE SYSTEM	FOOT	260
*20010614	CLEANING EXISTING MANHOLE OR HANDHOLE	EACH	1
*20010615	CLEANING EXISTING INLETS	EACH	3
*20033600	LONGITUDINAL JOINT REPAIR	FOOT	735
*20050600	REMOVE AND RESET ORNAMENTAL FENCE	FOOT	23
*20056606	STORM SEWER (WATER MAIN REQUIREMENTS) 10 INCH	FOOT	133



CLASS C PATCHES, TYPE IV NOT TO SCALE

DESIGNED - R.H.D.	REVISIONS -
DRAWN - S.O.K.	REVISIONS -
CHECKED - R.H.D.	REVISIONS -
DATE - 4/25/13	REVISIONS -

STATE OF ILLINOIS
DEPARTMENT OF TRANSPORTATION

SUMMARY OF QUANTITIES AND GENERAL NOTES		F.A. RTE.	SECTION	COUNTY	TOTAL SHEETS	SHEET NO.
LINCOLN'S TOMB SITE RENOVATIONS			PARK ROADS	SANGAMON	6	2
SCALE:	SHEET 2 OF 6 SHEETS	STA.	TO STA.			
ILLINOISIFIED AND PROJECT						

F.A. RTE.	SECTION	COUNTY	TOTAL SHEETS	SHEET NO.
	PARK ROADS	SANGAMON	6	2
CONTRACT NO. 46289				
ILLINOISIFIED AND PROJECT				

JOB NO. 250-061-X VASCONCELLES ENGINEERING CORP. DESIGN FIRM REGISTRATION NUMBER 184-000107

PAVING SCHEDULE															
STATION(S)	BIT MATLS PR CT	BIT MATLS C&S CT	COVER COAT AGG	SEAL COAT AGG	HMA SC "C" N70	HMA SURF REM 2	CL C PATCH T4 7	CRACK FILLING	CONC CURB TB	THPL PVT MK LTR & SYM	THPL PVT MK LINE 4	THPL PVT MK LINE 6	THPL PVT MK LINE 24	PAVT MARKING REMOVAL SQ FT	PARKING LOT SEAL COAT GALLON
101+40, 24' LT TO 103+99, 122' LT								1100					2273		1341
101+47, 7.4' RT TO 101+60, 21' RT													19		
102+35, 62' RT TO 103+17, 78' RT												85			
103+05, 47' RT TO 103+45, 47' RT													62		
103+53, 66' RT TO 104+03, 78' RT															
103+90, 72' RT															
104+03, 47' RT TO 104+36, 46' RT						16	143	25							
104+43, 112' LT TO 104+82, 5' LT					38.8	346									
200+91, 153.5' LT TO 202+15, 174' LT	60	113	1.6	1.6											
200+82 TO 201+00															
201+00 TO 202+48															
202+13, 174' LT TO 202+26, 158' LT									23						
202+15, 174' LT TO 202+26, 163' LT															
202+29, 127' LT TO 204+21, 84' LT	211	394	5.6	5.6											
TOTAL	272	507	7.2	7.2	55	489	25	1100	23	18.4	2273	147	19	861	1341

STORM SEWER SCHEDULE																			
STATION(S)	END SECTIONS 10	CONC HDWL FOR P DRAIN	PIPE DRAINS 4	PIPE UNDERDRAIN 4 SP	MAN TA 5 DIA T1F CL	CONC THRUST BLOCKS	STORM SEWER SPEC 24	AGGREGATE BACKFILL	DIRECTIONAL BORING	SPECIAL GRATE NO. 1	CAST-IN-PLACE CONCRETE WALL SQ FT	D I WTR MN FITTINGS	MAN TA 5D T1F CL SPL	CON P 4 PVC SCHED 80	CLEAN DRAINAGE SYSTEM	CLEAN EX MAN/HAND	CLEAN EX INLETS	STORM SEW WM REQ 10	
100+20.4, 130' RT TO 100+51, 90.5' RT				50															
100+21, 136' LT			160																
100+21, 136' LT TO 100+65, 11' RT				26															
100+34, 70' RT TO 100+51, 90.5' RT				50															
100+51, 90.5' RT TO 100+96, 130' RT																			
100+58, 85' RT TO 100+65, 11' RT									75					75					
101+60, 131' LT					1														
101+60, 131' LT TO 102+67, 159' LT							110	367											
102+67, 159' LT																			
201+53.4, 106.8' LT TO 202+33.5, 170.8' LT															89				
202+17.6, 208.4' LT																1			
202+17.6, 208.4' LT TO 202+22.4, 189.3' LT															20				
202+22.4, 189.3' LT																		1	
202+22.4, 189.3' LT TO 202+47.1, 147.7' LT															48				
202+47.1, 147.7' LT										1								1	
202+47.1, 147.7' LT TO 202+91.5, 141.1' LT																			
202+47.1, 147.7' LT TO 203+04.8, 143.1' LT															45				
202+72.6, 186.9' LT															58				
300+20 TO 300+94.3																			87
300+20.8											13	190							
300+44.3											13	160							
300+85.3											13	160							
300+89, 23' LT	1																		
300+89, 23' LT TO 300+94.3																			23
300+94.3																			
300+94.3 TO 300+96, 23' RT												310							23
300+96, 23' RT	1																		
TOTAL	2	1	160	126	1	1	110	367	75	1	39	820	1	75	260	1	3	133	

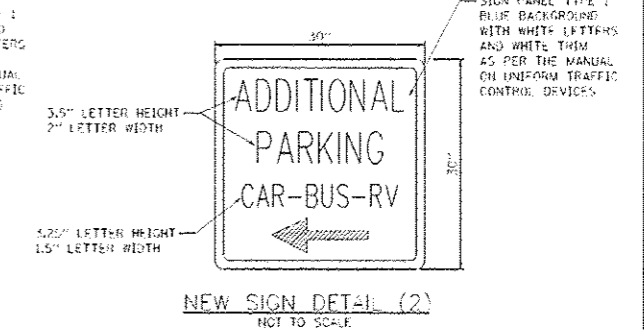
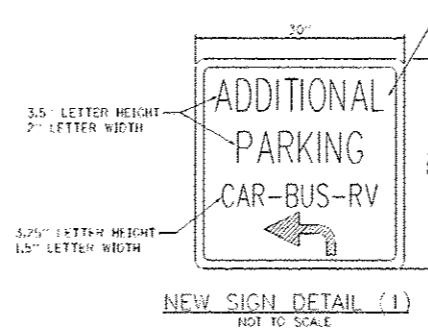
SEEDING SCHEDULE								
STATION(S)	TOPSOIL F & P 4	SEEDING CL 1	NITROGEN FERT NUTR	PHOSPHORUS FERT NUTR	POTASSIUM FERT NUTR	AGGR GROUND LIMESTONE	EROSION CONTR BLANKET SQ YD	PERIMETER EROS BAR
101+53, 135' LT TO 102+72, 153' LT								150
101+56, 133' LT TO 102+08, 155' LT	83							83
202+13, 174' LT TO 202+26, 158' LT								8
300+20 TO 300+94	309							309
300+83, 26' LT TO 301+01, 26' RT								71
ENTIRE PROJECT		0.1	9	9	9	0.2		
TOTAL	392	0.1	9	9	9	0.2	400	221

MISCELLANEOUS SCHEDULE										
STATION(S)	TREE REMOV 6-15	TREE REMOV OVER 15	SIGN PANEL T1	WOOD SIN SUPPORT	STUMP REMOVAL ONLY	EARTH EXCAVATION SPL	SIGN REMOVAL	REM RE-ERECT EX SIGN	LONG JOINT REPAIR	REM RESET ORN FENCE
101+71, 133' LT					36					
104+03, 91' RT										
104+39, 38' RT			6.25	15			1			
104+69, 56' RT			6.25	15						
200+82 TO 201+00									32	
201+00 TO 202+48									703	
202+11, 171' LT TO 202+25, 158' LT										23
202+15, 174' LT TO 202+26, 163' LT										
300+20 TO 300+94.3	77	36				82				
TOTAL	77	36	12.5	30	36	82	1	1	735	23

MIXES AND APPLICATION RATE TABLES

MIXTURES USE(S)	BITUMINOUS SURFACE
AC/PC	PG 64-22
RAP% (MAX)	10%
DESIGN AIR VOIDS	4.0% @ N DESIGN 70
MIX COMP	JL 9.5
FRICTION AGG.	MIX C

PRIME APPLICATION RATES		
BIT MATLS PR CT	BIT COVER & SEAL COAT	COVER AND SEAL COAT
0.375 GAL/ SQ YD	0.35 GAL/ SQ YD	20 LB/ SQ YD



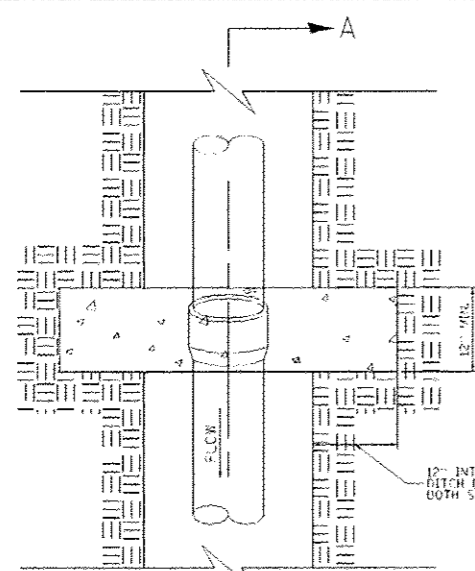
DESIGNED - R.H.D.	REVISIONS -
DRAWN - S.B.K.	REVISIONS -
CHECKED - R.H.D.	REVISIONS -
DATE - 4/25/13	REVISIONS -

STATE OF ILLINOIS
DEPARTMENT OF TRANSPORTATION

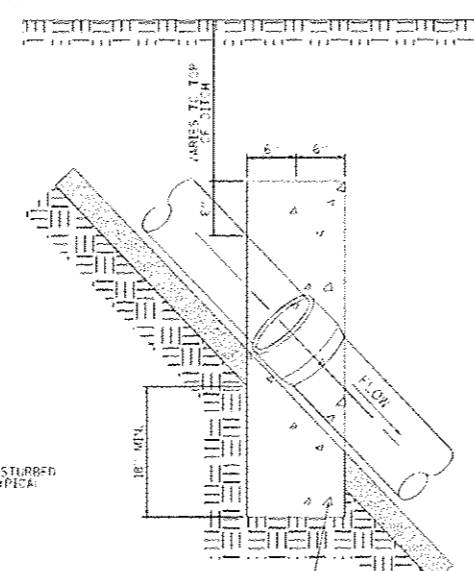
SCHEDULE OF QUANTITIES
LINCOLN'S TOMB SITE RENOVATIONS

F.A. RTE.	SECTION	COUNTY	TOTAL SHEETS	SHEET NO.
	PARK ROADS	SANGAMON	6	3
				CONTRACT NO. 46289
ILLINOIS FED. AID PROJECT				

JOB NO. 250-081-X VASCENNELLES ENGINEERING CORP. DESIGN FIRM REGISTRATION NUMBER 184-002107

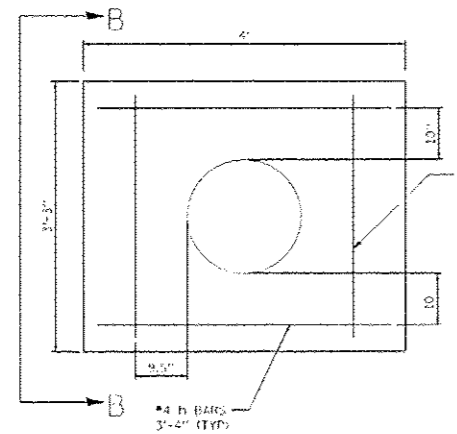


PLAN

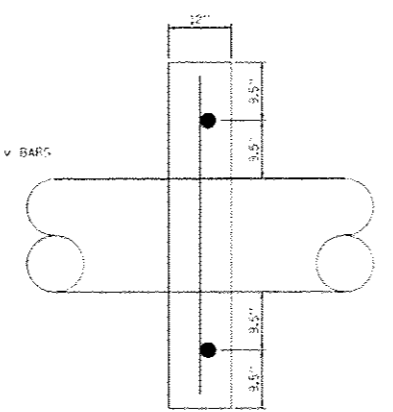


SECTION A-A

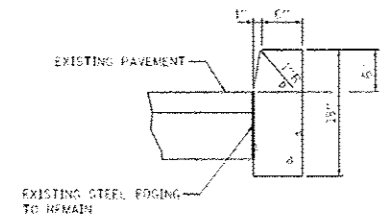
CAST-IN-PLACE CONCRETE DETAIL FOR PIPES ON STEEP SLOPES NOT TO SCALE



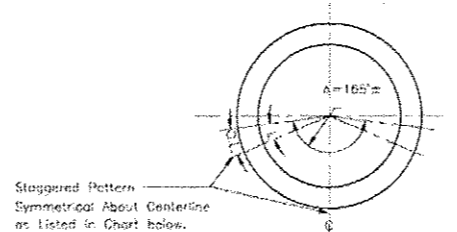
CAST-IN-PLACE CONCRETE WALL DETAIL NOT TO SCALE



SECTION B-B NOT TO SCALE



CONCRETE CURB, TYPE B NOT TO SCALE

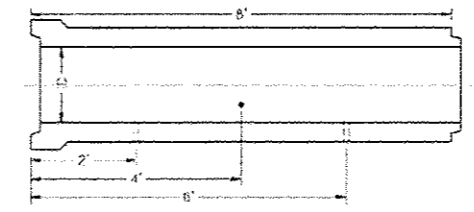


Staggered Pattern Symmetrical About Centerline as Listed in Chart below.

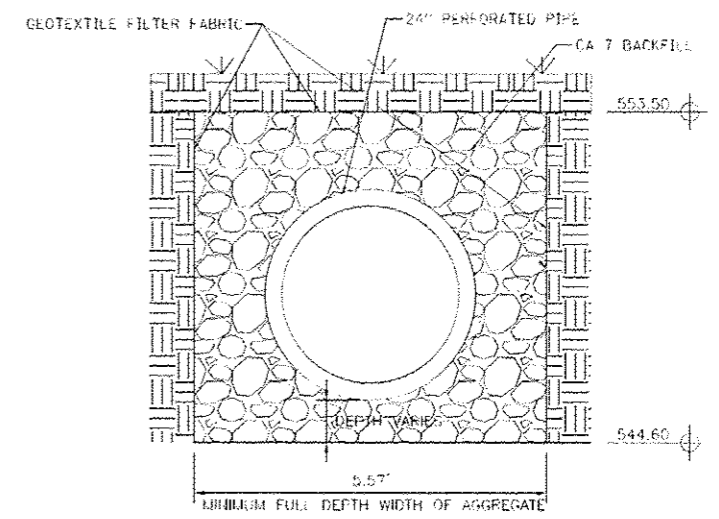
No. of Holes Vary Depending on Diameter; See Chart Below.

Area of Opening Per Foot Comparable to Design Criteria of ASTM C644 Using 1" Holes.

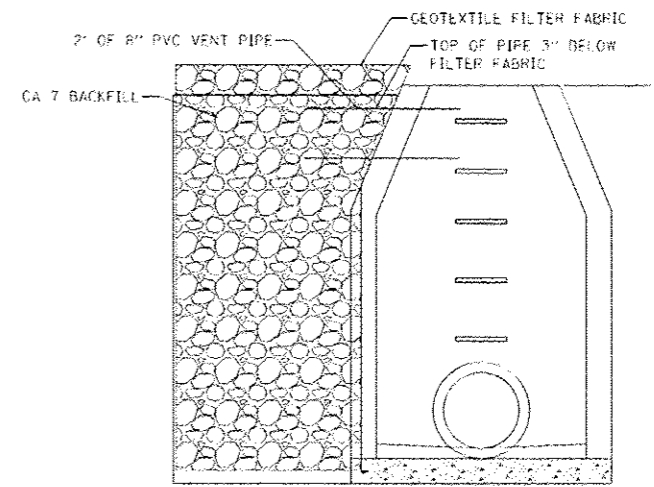
Alternate Design Patterns and/or Openings Available.



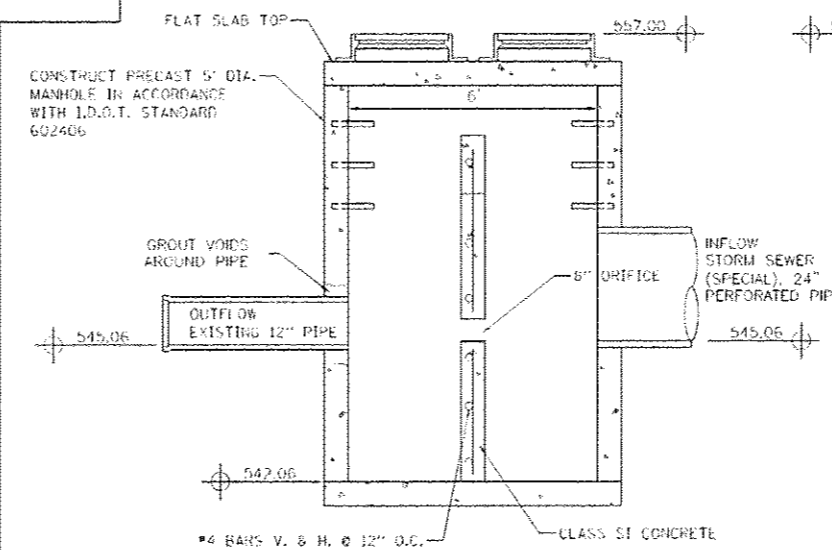
Pipe Dia.	# of Rows	# of 1" Holes Per 8' Length	Sym. Stagger Pattern	Opening ² /FT	L	D.L.
27"	8	12	1/2" / 1/2"	1.2	52"	6 1/2"
30"	8	12	1/2" / 1/2"	1.2	64"	7 1/2"
36"	8	12	1/2" / 1/2"	1.2	72"	9"
42"	10	14	1/2" / 1/2"	1.4	64"	6 1/2"
48"	12	18	2/3" / 2/3" / 1/3"	1.8	64"	7 1/2"
54"	14	20	1/2" / 1/2" / 1/2" / 1/2"	2.0	64"	7 1/2"
60"	14	20	1/2" / 1/2" / 1/2" / 1/2"	2.0	64"	8 1/2"
66"	16	24	2/3" / 2/3" / 1/3" / 1/3"	2.4	64"	7 1/2"
72"	16	24	2/3" / 2/3" / 1/3" / 1/3"	2.4	64"	8 1/2"



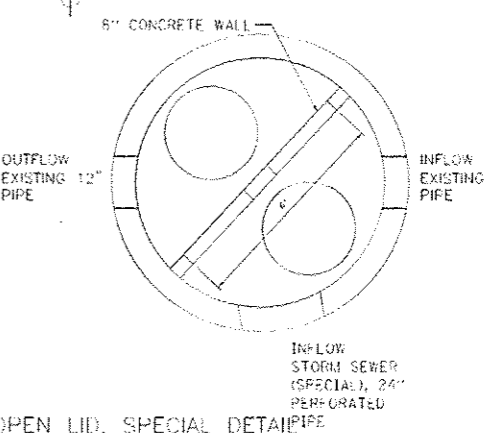
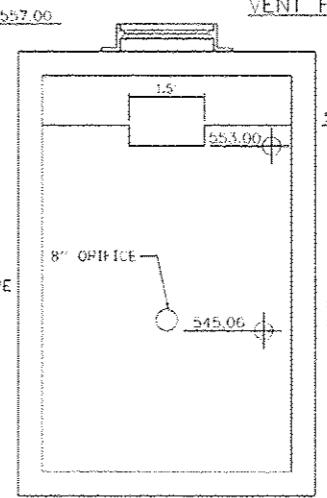
AGGREGATE BACKFILL FOR PERFORATED PIPE NOT TO SCALE



VENT FOR PERFORATED PIPE & AGGREGATE NOT TO SCALE



MANHOLE TYPE A, 6' DIA. TYPE I FRAME AND OPEN LID. SPECIAL DETAIL NOT TO SCALE



FILE NAME: 0846281-shs24-construction details.dwg	USER NAME: k.vanval	DESIGNED - R.H.D.	REVISED -
Default	Default	DRAWN - S.D.K.	REVISED -
Default	Default	CHECKED - R.H.D.	REVISED -
Default	Default	DATE - 4/25/13	REVISED -

STATE OF ILLINOIS
DEPARTMENT OF TRANSPORTATION

CONSTRUCTION DETAILS		F.A. RTE.	SECTION	COUNTY	TOTAL SHEETS	SHEET NO.
LINCOLN'S TOMB SITE RENOVATIONS			PARK ROADS	SANGAMON	6	4
SCALE:	SHEET 4 OF 6 SHEETS	STA.	TO STA.			

CONTRACT NO. 46289		ILLINOIS FED. AID PROJECT	
--------------------	--	---------------------------	--

JOB NO. 250-081-X VASCONCELLOS ENGINEERING CORP. DESIGN FIRM REGISTRATION NUMBER 184-020107

TREE REMOVAL		
STA.	OFFSET	SIZE
105+11 LT	68'	6"
105+12 LT	55'	6"
105+14 LT	61'	6"
105+14 LT	49'	16"
105+17 LT	74'	20"
105+24 LT	65'	7"
105+30 LT	71'	6"
105+31 LT	51'	6"
105+33 LT	49'	10"
105+41 LT	65'	7"
105+55 LT	54'	7"
105+59 LT	51'	1"
105+61 LT	66'	9"

ASPHALTIC EMULSION SLURRY SEAL, MIXTURE C

BENCHMARK "A" CONTROL POINT #27, A P.R. NAIL SET AT STA. 101+55.18, 38' RT ELEVATION = 576.92 (ASSUMED DATUM)

PERIMETER EROSION BARRIER STA. 101+63, 136' LT TO STA. 102+72, 153' LT 150 FOOT

TOPSOIL FURNISH AND PLACE, 4" STA. 101+65, 133' LT TO STA. 102+68, 153' LT 83 SQ YD

STORM SEWERS (SPECIAL), 24" STA. 101+60, 131' LT TO STA. 102+67, 159' LT 110 FOOT

CONCRETE HEADWALLS FOR PIPE DRAINS STA. 100+26, 125' LT 1 EACH

MANHOLES, TYPE A, 5'-DIAMETER, TYPE 1 FRAME, CLOSED LID STA. 101+60, 131' LT 1 EACH

PAVEMENT MARKING REMOVAL (ENTIRE PARKING LOT) STA. 101+40, 24' LT TO STA. 103+99, 122' LT 597 SQ FT

THERMOPLASTIC PAVEMENT MARKING LINE, 4" (ENTIRE PARKING LOT) STA. 101+40, 24' LT TO STA. 103+99, 122' LT 2273 FEET

THERMOPLASTIC PAVEMENT MARKING LETTERS AND SYMBOLS STA. 103+05, 47' RT TO STA. 103+99, 72' RT 18.4 SQ FT

THERMOPLASTIC PAVEMENT MARKING LINE, 6" STA. 102+35, 67' RT TO STA. 103+17, 78' RT 85 FEET

THERMOPLASTIC PAVEMENT MARKING LINE, 24" STA. 101+47, 7.4' RT TO STA. 101+60, 21' RT 19 FEET

PIPE DRAINS 4" STA. 100+21, 130' LT TO STA. 100+65, 11' RT 160 FOOT U.S.F.L. = 563.25 D.S.F.L. = 551.00 SLOPE = 0.22%

STA. 100+00 H = 777.2; E = 7507.86

DIRECTIONAL BORING STA. 100+58, 85' RT TO STA. 100+65, 11' RT 75 FOOT

CONTROL POINT #27 N = 7597.17 E = 7904.67 STA. 200+00 N = 8067.21 E = 7594.67

CONDUIT PUSHED, 4" DIA., PVC SCHEDULE 80 STA. 100+58, 85' RT TO STA. 100+65, 11' RT 75 FOOT U.S.F.L. = 564.00 D.S.F.L. = 563.25 SLOPE = 1.0%

EXISTING SPRINKLER SYSTEM PIPE UNDERDRAINS 4" STA. 100+20.4, 130' RT TO STA. 100+38, 85' RT 59 FOOT U.S.F.L. = 564.59 D.S.F.L. = 564.00 SLOPE = 1.0%

PIPE UNDERDRAINS 4" STA. 100+58, 85' RT TO STA. 100+96, 70' RT 41 FOOT U.S.F.L. = 564.41 D.S.F.L. = 564.00 SLOPE = 1.0%

LONGITUDINAL JOINT REPAIR STA. 201+00 TO STA. 201+00 32 FOOT

THERMOPLASTIC PAVEMENT MARKING LINE, 6" STA. 103+83, 66' RT TO STA. 104+03, 78' RT 62 FEET

REMOVE AND RE-ERECT EXISTING SIGN REMOVE STA. 103+87, 97' RT RE-ERECT STA. 104+03, 91' RT 1 EACH

MANHOLES, TYPE A, 5'-DIAMETER, TYPE 1 FRAME, CLOSED LID, (SPECIAL) STA. 102+67, 159' LT 1 EACH

CRACK FILLING (ENTIRE PARKING LOT) STA. 101+40, 24' LT TO STA. 103+99, 122' LT 1100 FOOT

PARKING LOT SEAL COAT (ENTIRE PARKING LOT) STA. 101+40, 24' LT TO STA. 103+99, 122' LT 1117 GAL/ON

HMA SURFACE COURSE, MIXTURE "C", N70 STA. 104+43, 112' LT TO STA. 104+82, 5' LT 41 TON

HVA SURFACE REMOVAL, 2" STA. 104+43, 112' LT TO STA. 104+82, 5' LT 346 SQ. YDS.

STORM SEWER (WATER MAIN REQUIREMENTS) 10" STA. 300+20, 1' RT TO STA. 300+94 87 FEET U.S.F.L. = 576.50 D.S.F.L. = 534.50 SLOPE = 48.82

EARTH EXCAVATION (SPECIAL) STA. 300+20, 10' TO STA. 300+94 82 CU YD

STORM SEWER (WATER MAIN REQUIREMENTS) 10" STA. 300+83, 23' LT TO STA. 300+94 23 FEET U.S.F.L. = 534.50 D.S.F.L. = 534.45 SLOPE = 0.22%

PERIMETER EROSION BARRIER STA. 300+43, 26' LT TO STA. 301+01, 26' RT 11 FOOT

STA. 301+00 N = 8340.62 E = 7656.37

THRUST BLOCK STA. 300+94 1 EA.

STORM SEWER (WATER MAIN REQUIREMENTS) 10" STA. 300+44, 11' RT TO STA. 300+96, 23' RT 23 FEET U.S.F.L. = 534.50 D.S.F.L. = 534.50 SLOPE = 0.22%

STORM SEWER TABLE			
LETTER	STA.	DESCRIPTION	QUANTITY
(A)	300+20.8	DUCTILE IRON WATER MAIN FITTINGS, 45° ELBOW, 10"	130
(B)	300+44.3	DUCTILE IRON WATER MAIN FITTINGS, 22.5° ELBOW, 10"	160
(C)	300+85.3	DUCTILE IRON WATER MAIN FITTINGS, 11.25° ELBOW, 10"	160
(D)	300+94.3	DUCTILE IRON WATER MAIN FITTINGS, TEE, 10"	310
(E)	300+80, 23' LT	END SECTIONS 10"	1
(F)	300+96, 23' RT	END SECTIONS 10"	1

CAST-IN-PLACE CONCRETE WALL TABLE			
LETTER	STA.	DESCRIPTION	QUANTITY
(A)	300+20.8	CAST-IN-PLACE CONCRETE WALL	12
(B)	300+44.3	CAST-IN-PLACE CONCRETE WALL	13
(C)	300+85.3	CAST-IN-PLACE CONCRETE WALL	13

DESIGNED - R.H.D.	REVISIONS -
DRAWN - J.T.T.	REVISIONS -
CHECKED - R.H.D.	REVISIONS -
DATE - 4/25/13	REVISIONS -

STATE OF ILLINOIS
DEPARTMENT OF TRANSPORTATION

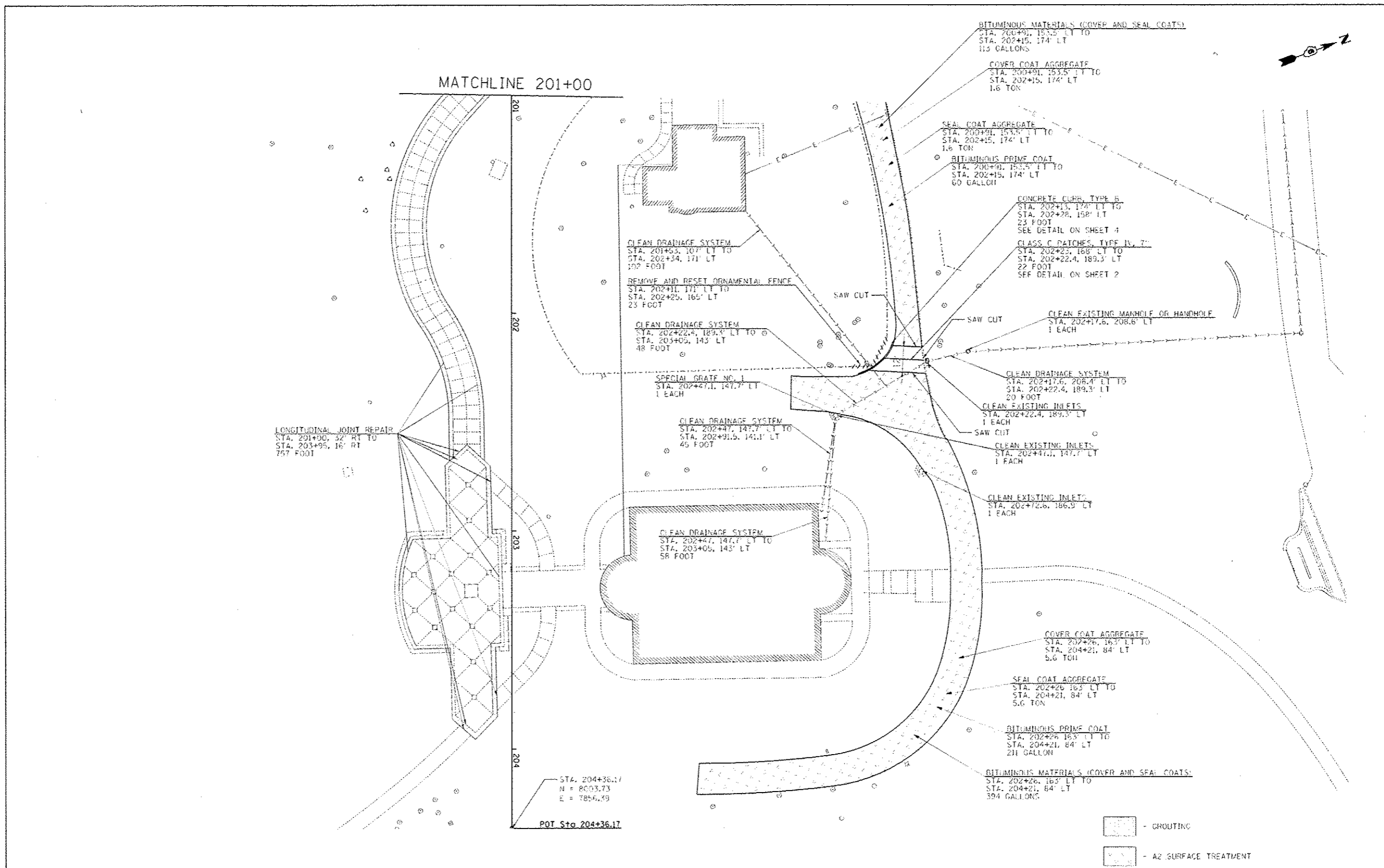
PLAN SHEET STATION 200+00 - 201+00
LINCOLN'S TOMB SITE RENOVATIONS

P.A. RTE.	SECTION	COUNTY	TOTAL SHEETS	SHEET NO.
	PARK ROADS	SANGAMON	6	5
			CONTRACT NO. 46289	
ILLINOIS FED. AID PROJECT				

SCALE: 1" = 20' SHEET 5 OF 6 SHEETS STA. 200+00 TO STA. 201+00

JOB NO. 250-061-X VASCCELLES ENGINEERING CORP. DESIGN FIRM REGISTRATION NUMBER 184-00287

SEE 30 YAW



**STATE OF ILLINOIS
DEPARTMENT OF TRANSPORTATION**

**PLAN SHEET STATION 201+00 - 204+37
LINCOLN'S TOMB SITE RENOVATIONS**

SCALE: 1" = 20' SHEET 6 OF 6 SHEETS STA. 201+00 TO STA. 204+37

F.A. RTE.	SECTION	COUNTY	TOTAL SHEETS	SHEET NO.
	PARK ROADS	SANGAMON	6	6
			CONTRACT NO.	46289
ILLINOIS FED. AID PROJECT				

JOB NO. 250-061-X VASCONCELLES ENGINEERING CORP. DESIGN FIRM REGISTRATION NUMBER 184-002107