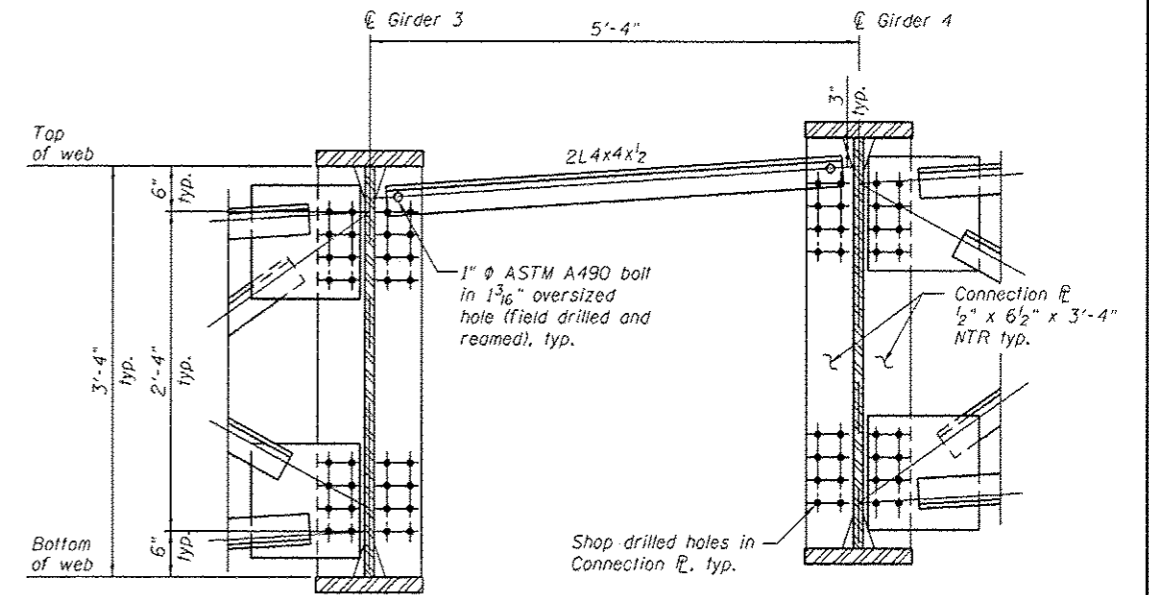
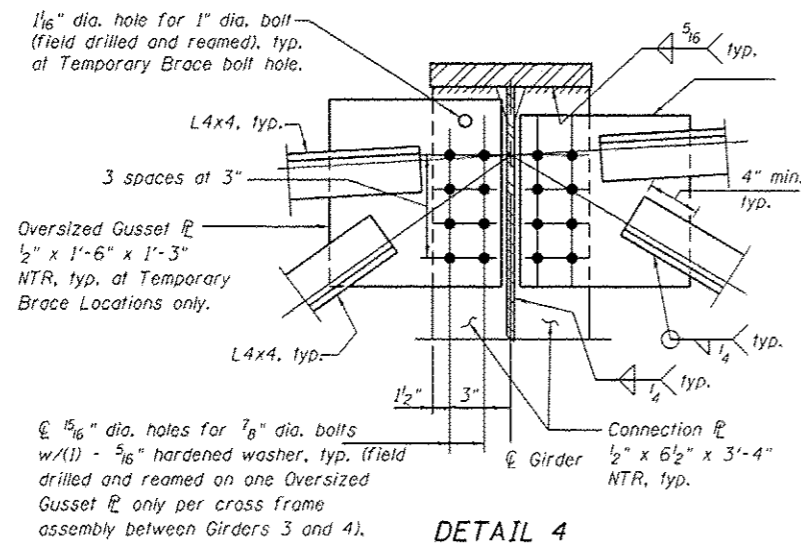


**DETAIL 3**



**TEMPORARY BRACE FOR STAGE III DECK POUR**



**DETAIL 4**

**Notes:**  
 Cost of temporary brace included in pay item "Furnishing and Erecting Structural Steel".  
 All structural steel shall be AASHTO M270 Grade 50.  
 NTR indicates Notch Toughness Requirements.

**STAGE III DECK POUR AND CLOSURE POUR SEQUENCING**

1. Erect girder lines 1 thru 3 with cross frames between girders 1-2 and 2-3. Abutment cross frames between girders 3 and 4 to be erected.
2. Erect temporary brace between girder lines 3 and 4 at each cross frame location by field drilling and reaming holes in connection plates and temporary braces.
3. Pour Stage III deck.
4. Remove and replace temporary braces with cross frames. Only one temporary brace may be removed at a time. Install cross frames by field drilling and reaming holes in the gusset plates of one side of the cross frames only. Contractor shall field verify dimensions of cross frames prior to fabrication. See Details 3 and 4 for final gusset plate details.
5. Pour closure pour.

⚠ Entire sheet revised

(Sheet 2 of 2)

**COLLINS ENGINEERS**  
 121 N. 90th St.  
 Suite 200  
 Chicago, IL 60654  
 Tel: (773) 327-1000  
 Fax: (773) 327-1000  
 www.collinseng.com

USER NAME :	DESIGNED - AMS	REVISION 1	5-30-2013 AMS
	CHECKED - LDB	REVISION 2	
PLOT SCALE :	DRAWN - DR	REVISION 3	
PLOT DATE :	CHECKED - JMH	REVISION 4	

**STATE OF ILLINOIS**  
**DEPARTMENT OF TRANSPORTATION**

**STEEL DETAILS**  
**STRUCTURE NO. 016-1323**

SHEET NO. SR23 OF SR41 SHEETS

F.A.P. RTE.	SECTION	COUNTY	TOTAL SHEETS	SHEET NO.
0383	0303-474HB-R	COOK	368	264
CONTRACT NO. 60F63				
ILLINOIS FED. AID PROJECT				