



BM01
N. 1,903,723.174 E. 1,170,981.978 EL. 593.063
BOLT ON TRAFFIC SIGNAL LOCATED ON THE NE
CORNER OF HALTED, GRAND, AND MILWAUKEE AVE.

BM02
N. 1,904,079.728 E. 1,170,555.042 EL. 595.399
SE BOLT ON 3RD POST WEST OF CORNER ON CONC.
WALL AT THE NORTH CORNER OF OHIO STREET AND
MILWAUKEE AVENUE, +/- 30 FT WEST OF CONC. WALL
CORNER.

BM03
N. 1,904,193.065 E. 1,170,865.387 EL. 577.615
SET "SQUARE" ON BARRIER WALL ON NORTH SIDE OF
WB FEEDER RAMP ONTARIO AND SECOND SAW JOINT
WEST OF HALSTED BRIDGE.

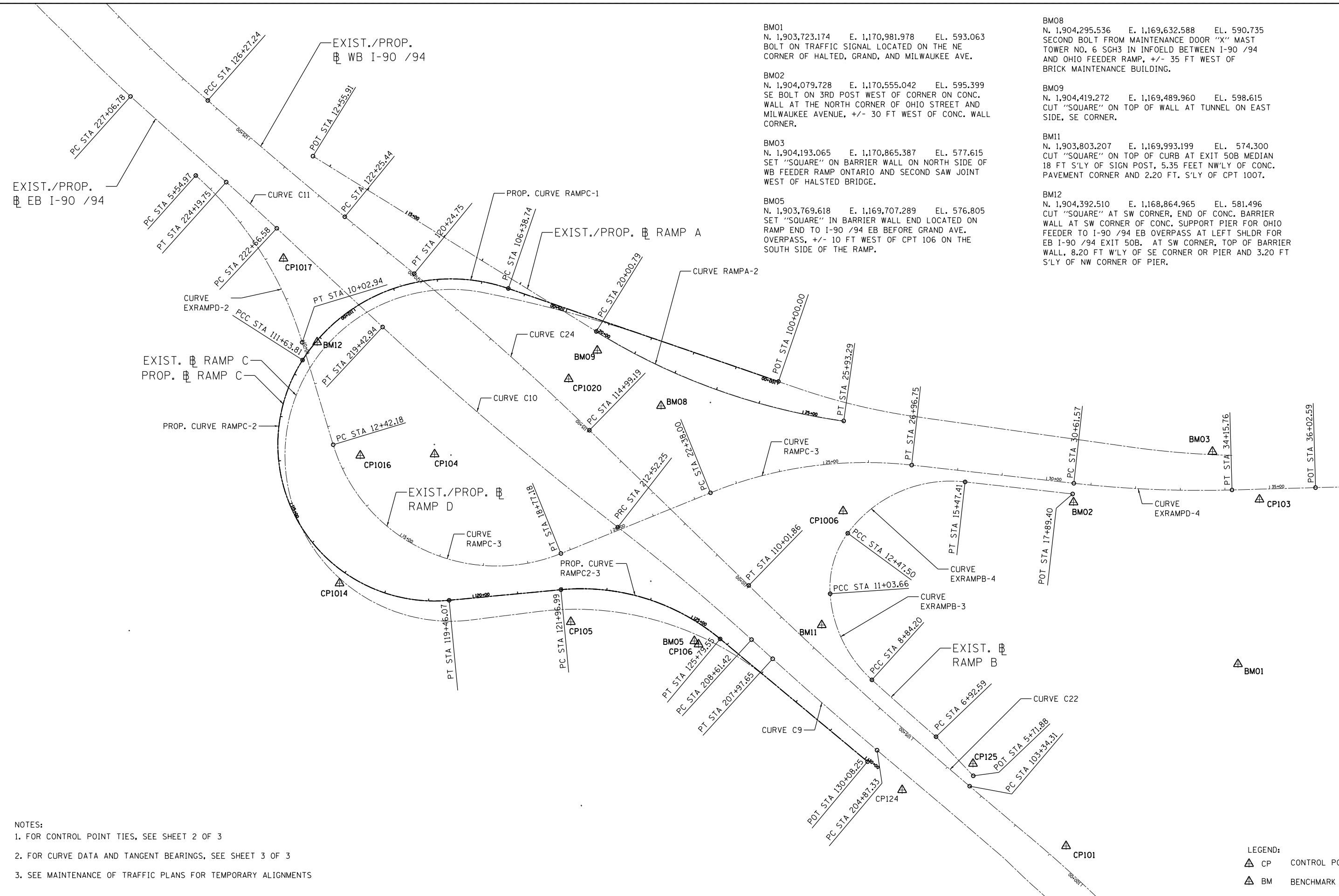
BM05
N. 1,903,769.618 E. 1,169,707.289 EL. 576.805
SET "SQUARE" IN BARRIER WALL END LOCATED ON
RAMP END TO I-90 /94 EB BEFORE GRAND AVE.
OVERPASS, +/- 10 FT WEST OF CPT 106 ON THE
SOUTH SIDE OF THE RAMP.

BM08
N. 1,904,295.536 E. 1,169,632.588 EL. 590.735
SECOND BOLT FROM MAINTENANCE DOOR "X" MAST
TOWER NO. 6 SGH3 IN INFOELD BETWEEN I-90 /94
AND OHIO FEEDER RAMP, +/- 35 FT WEST OF
BRICK MAINTENANCE BUILDING.

BM09
N. 1,904,419.272 E. 1,169,489.960 EL. 598.615
CUT "SQUARE" ON TOP OF WALL AT TUNNEL ON EAST
SIDE, SE CORNER.

BM11
N. 1,903,803.207 E. 1,169,993.199 EL. 574.300
CUT "SQUARE" ON TOP OF CURB AT EXIT 50B MEDIAN
18 FT S'LY OF SIGN POST, 5.35 FEET NW'LY OF CONC.
PAVEMENT CORNER AND 2.20 FT. S'LY OF CPT 1007.

BM12
N. 1,904,392.510 E. 1,168,864.965 EL. 581.496
CUT "SQUARE" AT SW CORNER, END OF CONC. BARRIER
WALL AT SW CORNER OF CONC. SUPPORT PIER FOR OHIO
FEEDER TO I-90 /94 EB OVERPASS AT LEFT SHLDR FOR
EB I-90 /94 EXIT 50B. AT SW CORNER, TOP OF BARRIER
WALL, 8.20 FT W'LY OF SE CORNER OR PIER AND 3.20 FT
S'LY OF NW CORNER OF PIER.



- NOTES:
1. FOR CONTROL POINT TIES, SEE SHEET 2 OF 3
 2. FOR CURVE DATA AND TANGENT BEARINGS, SEE SHEET 3 OF 3
 3. SEE MAINTENANCE OF TRAFFIC PLANS FOR TEMPORARY ALIGNMENTS

LEGEND:
 ▲ CP CONTROL POINT
 ▲ BM BENCHMARK

FILE NAME = I:\7000 - 194 at Ohio Street\CADD\CADD_SHEET\SD1606F63-sh1-01.dgn

COLLINS ENGINEERS

USER NAME = rge11	DESIGNED -	REVISED -
PLOT SCALE = 200.0000' / in.	DRAWN -	REVISED -
PLOT DATE = 3/25/2013	CHECKED -	REVISED -
	DATE -	REVISED -

**STATE OF ILLINOIS
DEPARTMENT OF TRANSPORTATION**

**I-90/94 AT OHIO STREET
ALIGNMENT, TIES, AND BENCHMARKS**

SCALE: SHEET NO. 1 OF 3 SHEETS STA. TO STA.

F.A.I. RE. 90/94	SECTION 0303-474HB-R	COUNTY COOK	TOTAL SHEETS 368	SHEET NO. 37
CONTRACT NO. 60F63				
FED. ROAD DIST. NO. 1 ILLINOIS FED. AID PROJECT				