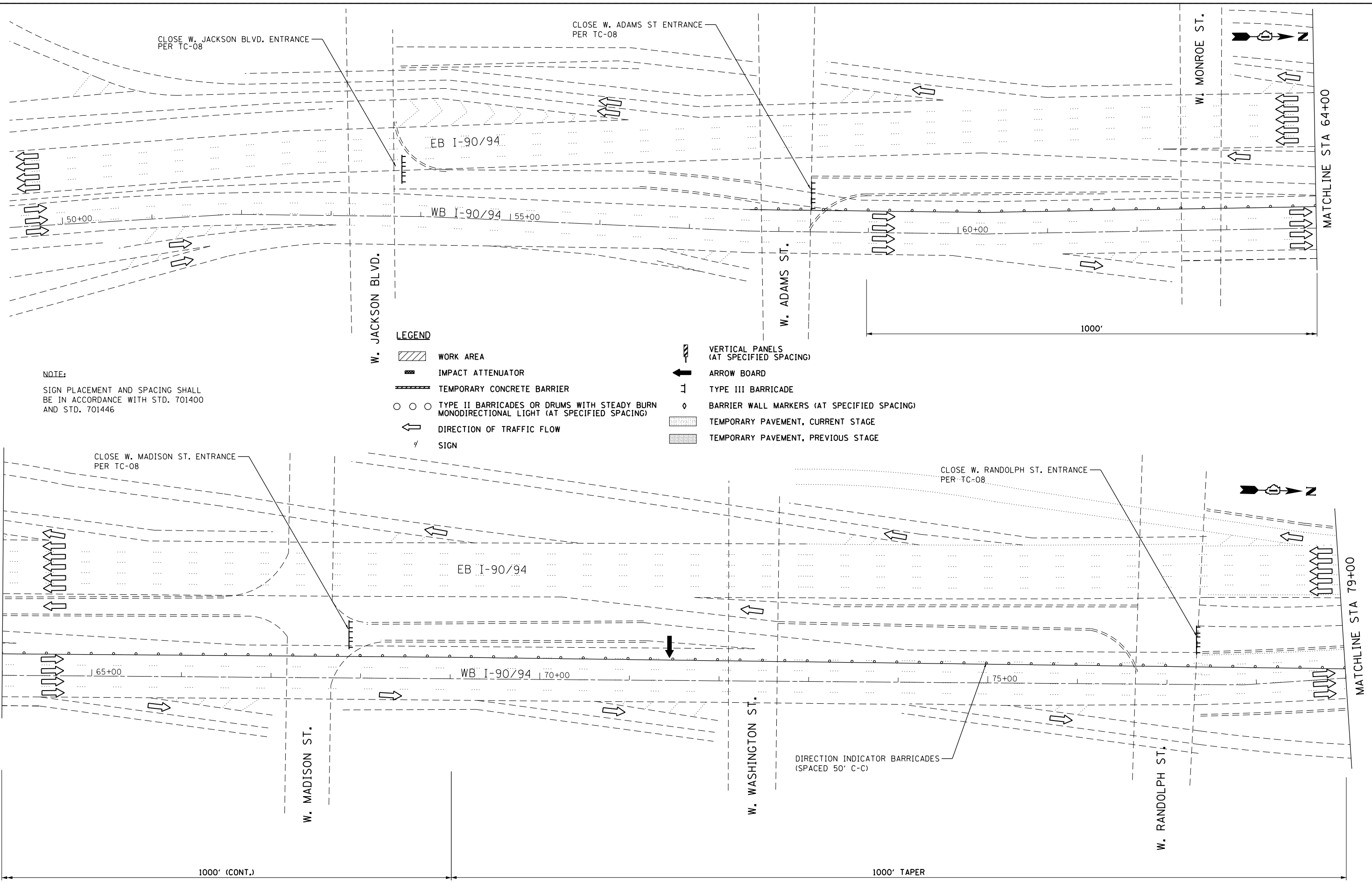


FILE NAME = \\collinsengr.com\1\adate\1\Posarden\DDCS\72000 - I94.ctb\Draw Streets\CADD SHEETS\MOT\60F63-ht-staging-stg2-RampB.dgn



NOTE:
SIGN PLACEMENT AND SPACING SHALL BE IN ACCORDANCE WITH STD. 701400 AND STD. 701446

LEGEND

- WORK AREA
- IMPACT ATTENUATOR
- TEMPORARY CONCRETE BARRIER
- TYPE II BARRICADES OR DRUMS WITH STEADY BURN MONODIRECTIONAL LIGHT (AT SPECIFIED SPACING)
- DIRECTION OF TRAFFIC FLOW
- SIGN
- VERTICAL PANELS (AT SPECIFIED SPACING)
- ARROW BOARD
- TYPE III BARRICADE
- BARRIER WALL MARKERS (AT SPECIFIED SPACING)
- TEMPORARY PAVEMENT, CURRENT STAGE
- TEMPORARY PAVEMENT, PREVIOUS STAGE



USER NAME = rge11
PLOT SCALE = 100.000' / in.
PLOT DATE = 3/25/2013

DESIGNED -
DRAWN -
CHECKED -
DATE -

REVISED -
REVISED -
REVISED -
REVISED -

**STATE OF ILLINOIS
DEPARTMENT OF TRANSPORTATION**

**STAGING AND TRAFFIC CONTROL
I-90/94 STAGE II
SUBSTAGE C**

SCALE: SHEET NO. OF SHEETS STA. TO STA.

F.A.I. RTE. 90/94	SECTION 0303-474HB-R	COUNTY COOK	TOTAL SHEETS 368	SHEET NO. 91
CONTRACT NO. 60F63				
FED. ROAD DIST. NO. 1 ILLINOIS FED. AID PROJECT				