

NOTES:

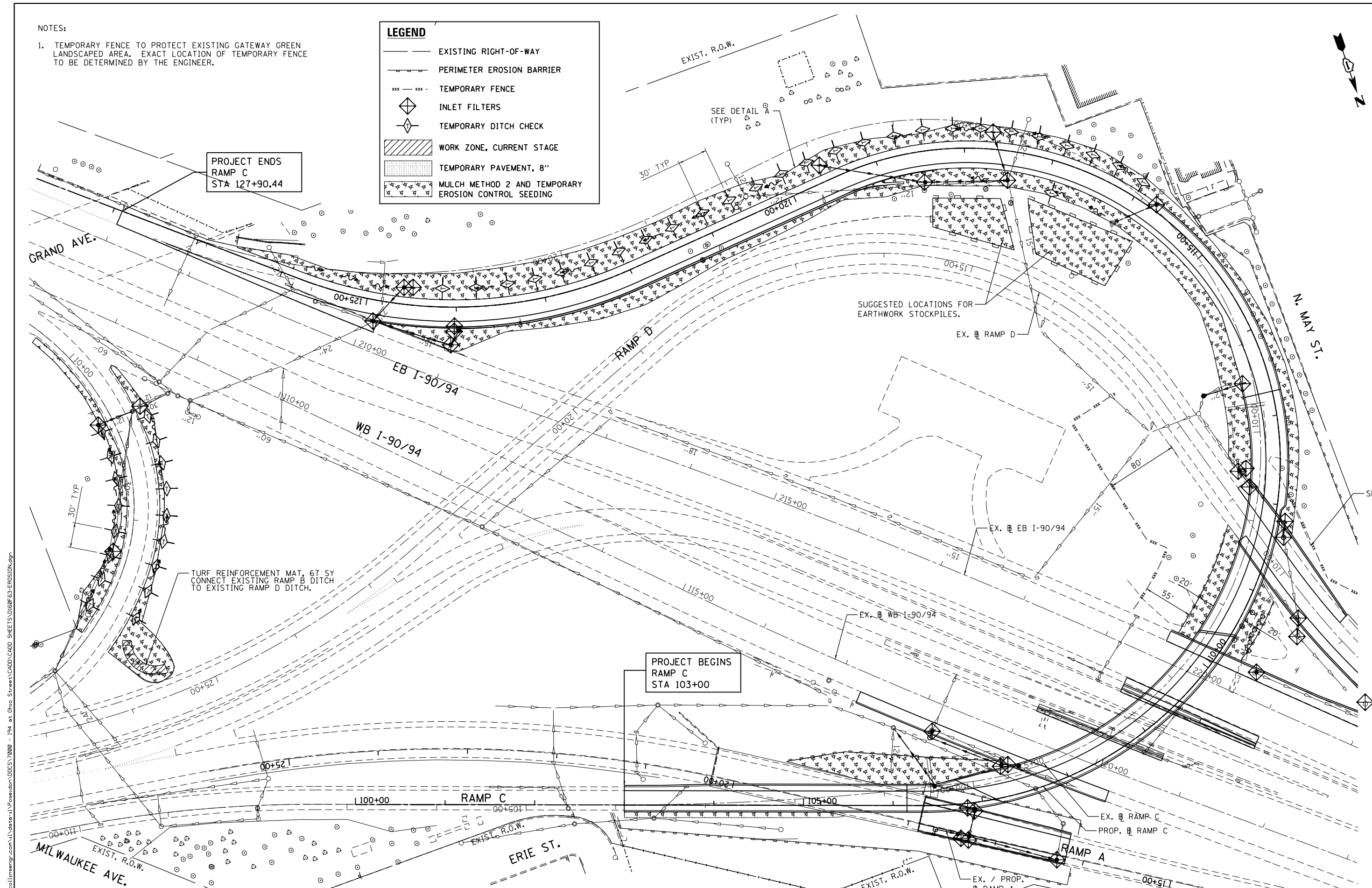
1. TEMPORARY FENCE TO PROTECT EXISTING GATEWAY GREEN LANDSCAPED AREA. EXACT LOCATION OF TEMPORARY FENCE TO BE DETERMINED BY THE ENGINEER.

LEGEND

- EXISTING RIGHT-OF-WAY
- PERIMETER EROSION BARRIER
- xxx — xxx — TEMPORARY FENCE
- ◇ INLET FILTERS
- ◇ TEMPORARY DITCH CHECK
- ▨ WORK ZONE, CURRENT STAGE
- ▨ TEMPORARY PAVEMENT, 8"
- ✱ MULCH METHOD 2 AND TEMPORARY EROSION CONTROL SEEDING

PROJECT ENDS
RAMP C
STA 127+90.44

PROJECT BEGINS
RAMP C
STA 103+00



FILE NAME = \\collinsengr.com\1\data\1\Posanden\DDCS\72000 - I94 at Ohio Street\CADD\SHEETS\DI60F63-EROSION.dgn

COLLINS ENGINEERS

USER NAME = r9e11
PLOT SCALE = 100.000000' / 1" =
PLOT DATE = 3/25/2013

DESIGNED -
DRAWN -
CHECKED -
DATE -

REVISED -
REVISED -
REVISED -
REVISED -

**STATE OF ILLINOIS
DEPARTMENT OF TRANSPORTATION**

**I-90/94 AT OHIO STREET
EROSION CONTROL PLAN**

SCALE: SHEET NO. OF SHEETS STA. TO STA.

F.A.I. RTE. 90/94	SECTION 0303-474HB-R	COUNTY COOK	TOTAL SHEETS 368	SHEET NO. 122
CONTRACT NO. 60F63				
FED. ROAD DIST. NO. 1 ILLINOIS FED. AID PROJECT				