

NOTES

1. 2" RGSC DIRECT BURIED 30" BELOW GRADE (MINIMUM) TO WOOD POLE WITH 3-1/C #4, 3-1/C #8 AND 1-1/C #8 GROUND.
2. 2" RGSC ATTACHED TO EXISTING CONCRETE STRUCTURE WITH 3-1/C #4 AND 1-1/C #8 GROUND.
3. 1" RGSC ATTACHED TO EXISTING CONCRETE STRUCTURE WITH 3-1/C #8 AND 1-1/C #10 GROUND.
4. 1" RGSC ATTACHED TO EXISTING CONCRETE STRUCTURE WITH 3-1/C #4 AND 1-1/C #8 GROUND.
5. 12" x 8" x 6" NEMA 3R JUNCTION BOX ATTACHED TO STRUCTURE.
6. PROVIDE 60 FOOT WOOD POLE. CABLE ATTACHMENT POINTS SHALL PROVIDE A MINIMUM AERIAL CABLE CLEARANCE OF 50' ABOVE GRADE AT ANY POINT IN THE SPAN.
7. 50' LUMINAIRE MOUNTING HEIGHT.
8. 3-1/C #8 AERIAL CABLE WITH MESSENGER WIRE.
9. 3-1/C #4 AERIAL CABLE WITH MESSENGER WIRE AND 3-1/C #8 AERIAL CABLE WITH MESSENGER WIRE.
10. THIS DRAWING CONCEPTUAL ONLY. CONTRACTOR TO DETERMINE REQUIREMENTS FOR PROVIDING POWER TO EXISTING UNDERPASS LUMINAIRES ON WEST SIDE OF UNDERPASS.
11. TEMPORARY WOOD LIGHT POLE LOCATIONS ARE REFERENCED TO THE RAMP C RUNAROUND.
12. 2" RGSC DIRECT BURIED 30" BELOW GRADE (MINIMUM) WITH 3-1/C #8 AND 1-1/C #10 GROUND.
13. PROVIDE CRASH PROTECTION FOR WOOD POLE.

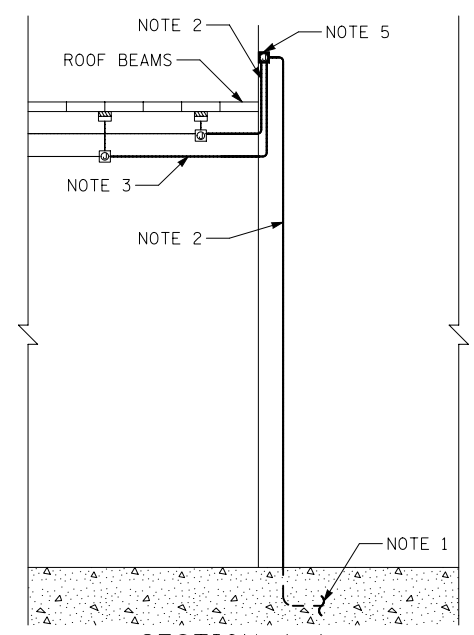
TEMPORARY UNDERPASS LIGHTING STAGING

STAGE 1 - EXTENSION OF WEST ABUTMENT

1. EXISTING LIGHTING CONTROLLER AND EXISTING LIGHTING ON EAST ABUTMENT TO REMAIN IN SERVICE DURING STAGE 1.
2. EXISTING LIGHTING ON WEST ABUTMENT TO BE TEMPORARILY FED FROM THE SOUTH END OF THE UNDERPASS TO ALLOW FOR CONSTRUCTION TO BEGIN ON THE NORTH END OF THE UNDERPASS.
3. PROVIDE TEMPORARY UNDERGROUND CONDUIT CONNECTIONS TO TEMPORARY AERIAL CABLES AS SHOWN ON PLANS. INSTALL WOOD POLES FROM EXISTING LIGHTING CONTROLLER TO EXISTING JUNCTION BOXES ON SOUTH SIDE OF THE EAST ABUTMENT. DISCONNECT CONNECTION FROM EXISTING CONTROLLER TO JUNCTION BOXES ON NORTH SIDE OF EAST ABUTMENT.
4. REMOVE EXISTING UNDERPASS LIGHTING FROM WEST ABUTMENT.
5. INSTALL NEW UNDERPASS LIGHTING ON EXISTING WEST ABUTMENT AND NEW EXTENSION OF WEST ABUTMENT PER PROPOSED LIGHTING PLANS.
6. INSTALL NEW CONTROLLER AND CONNECT NEW LIGHTING ON WEST ABUTMENT TO NEW CONTROLLER PER PROPOSED LIGHTING PLANS.

STAGE 2 - EXTENSION OF WEST ABUTMENT

1. PLACE NEW UNDERPASS LIGHTING ON WEST ABUTMENT IN SERVICE.
2. REMOVE EXISTING UNDERPASS LIGHTING FROM EAST ABUTMENT.



TEMPORARY CONNECTION TO EXISTING UNDERPASS LIGHTING
PARTIAL ELEVATION - LOOKING SOUTHWEST (NOT TO SCALE)

PEN TABLE = HDR Fullerton Parkway.tbl
FILE NAME = E-93.dgn

SPAAN Tech, Inc.
311 S. Wacker Drive, Suite 2400
Chicago, IL 60606
312.277.8800
312.277.8808
www.spaan-tech.com

COLLINS ENGINEERS

USER NAME = CDOT - City of Chicago	DESIGNED - IAB	REVISED -
PLOT SCALE = 40.000000' / in.	DRAWN - DL/TM	REVISED -
PLOT DATE = 3/5/2013 8:54:27 AM	CHECKED - YK	REVISED -
PLOT DRIVER = HDR - PDF.plt	DATE - DEC 2012	REVISED -

**STATE OF ILLINOIS
DEPARTMENT OF TRANSPORTATION**

**I-9094 AT OHIO STREET
UNDERPASS LIGHTING PLAN - TEMPORARY**

SCALE: 1" = 20' SHEET NO. OF SHEETS STA. TO STA.

F.A.I. RTE. 90/94	SECTION 0303-474HB-R	COUNTY COOK	TOTAL SHEETS 368	SHEET NO. 164
FED. ROAD DIST. NO. 1 ILLINOIS FED. AID PROJECT			CONTRACT NO. 60F63	