

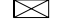
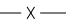
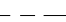

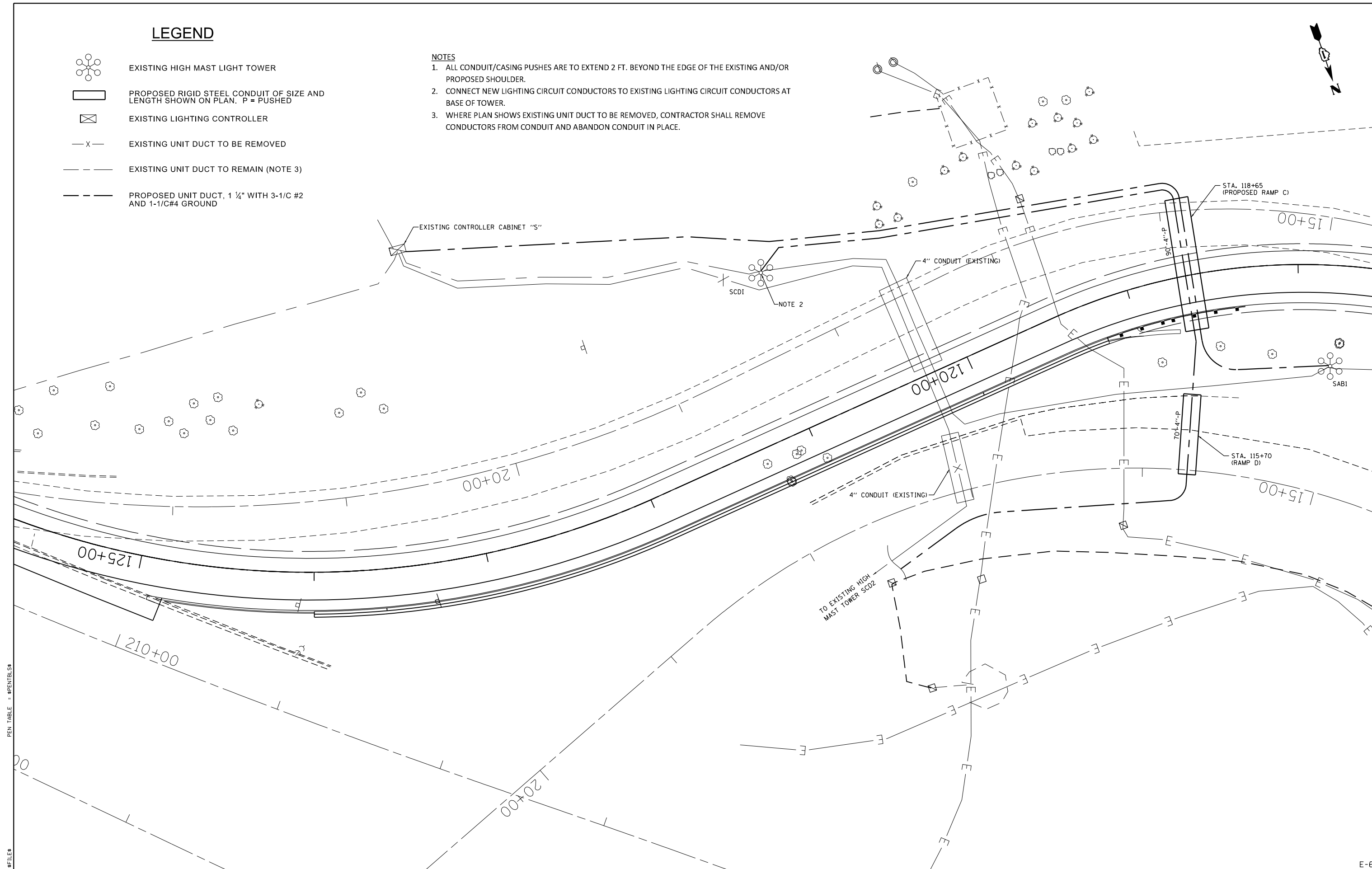


LEGEND

-  EXISTING HIGH MAST LIGHT TOWER
-  PROPOSED RIGID STEEL CONDUIT OF SIZE AND LENGTH SHOWN ON PLAN. P = PUSHED
-  EXISTING LIGHTING CONTROLLER
-  EXISTING UNIT DUCT TO BE REMOVED
-  EXISTING UNIT DUCT TO REMAIN (NOTE 3)
-  PROPOSED UNIT DUCT, 1 1/4" WITH 3-1/C #2 AND 1-1/C#4 GROUND

NOTES

1. ALL CONDUIT/CASING PUSHES ARE TO EXTEND 2 FT. BEYOND THE EDGE OF THE EXISTING AND/OR PROPOSED SHOULDER.
2. CONNECT NEW LIGHTING CIRCUIT CONDUCTORS TO EXISTING LIGHTING CIRCUIT CONDUCTORS AT BASE OF TOWER.
3. WHERE PLAN SHOWS EXISTING UNIT DUCT TO BE REMOVED, CONTRACTOR SHALL REMOVE CONDUCTORS FROM CONDUIT AND ABANDON CONDUIT IN PLACE.



PEN TABLE = #PENTBL\$
FILE NAME = #FILES

COLLINS ENGINEERS

USER NAME = ejohnson	DESIGNED - IAB	REVISED -
PLOT SCALE = 100.000000' / 1in.	DRAWN - DL/TM	REVISED -
PLOT DATE = 3/7/2013 3:16:39 PM	CHECKED - YK	REVISED -
PLOT DRIVER = #PLTDVRS#	DATE - DEC 2012	REVISED -

**STATE OF ILLINOIS
DEPARTMENT OF TRANSPORTATION**

**I-90/94 AT OHIO STREET
RELOCATION PLAN - HIGH MAST LIGHTING CIRCUITS**

SCALE:	SHEET NO.	OF SHEETS	STA.	TO STA.
--------	-----------	-----------	------	---------

F.A.I. RTE. 90/94	SECTION 0303-474HB-R	COUNTY COOK	TOTAL SHEETS 368	SHEET NO. 167
FED. ROAD DIST. NO. 1 ILLINOIS FED. AID PROJECT			CONTRACT NO. 60F63	