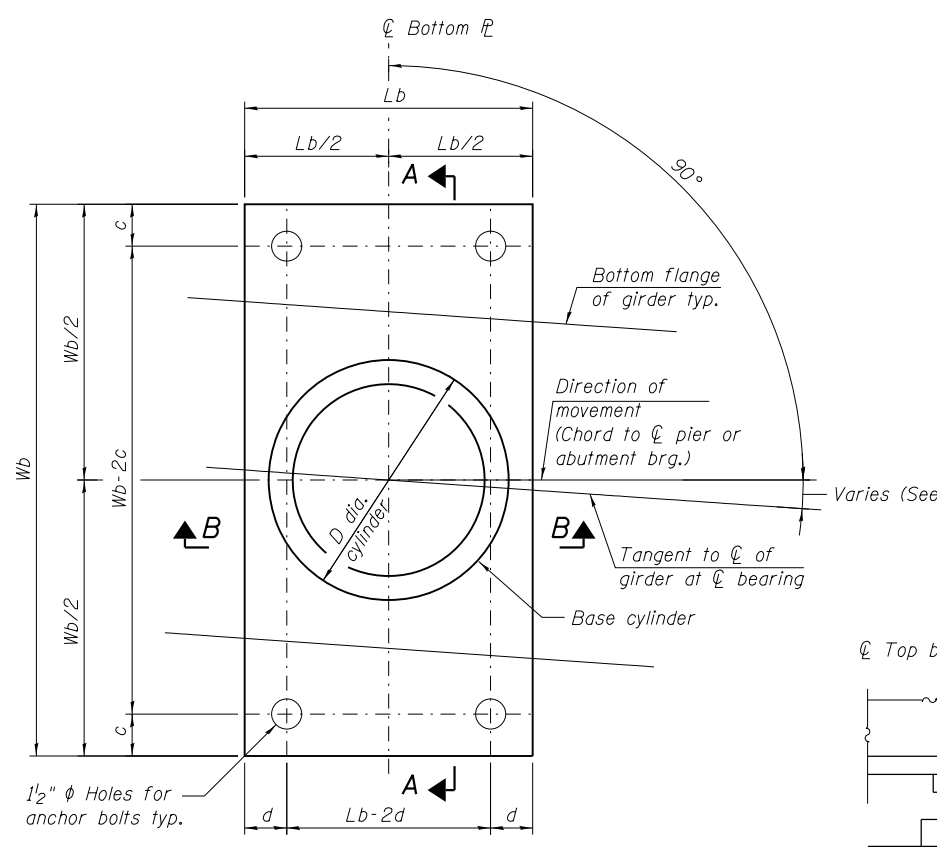
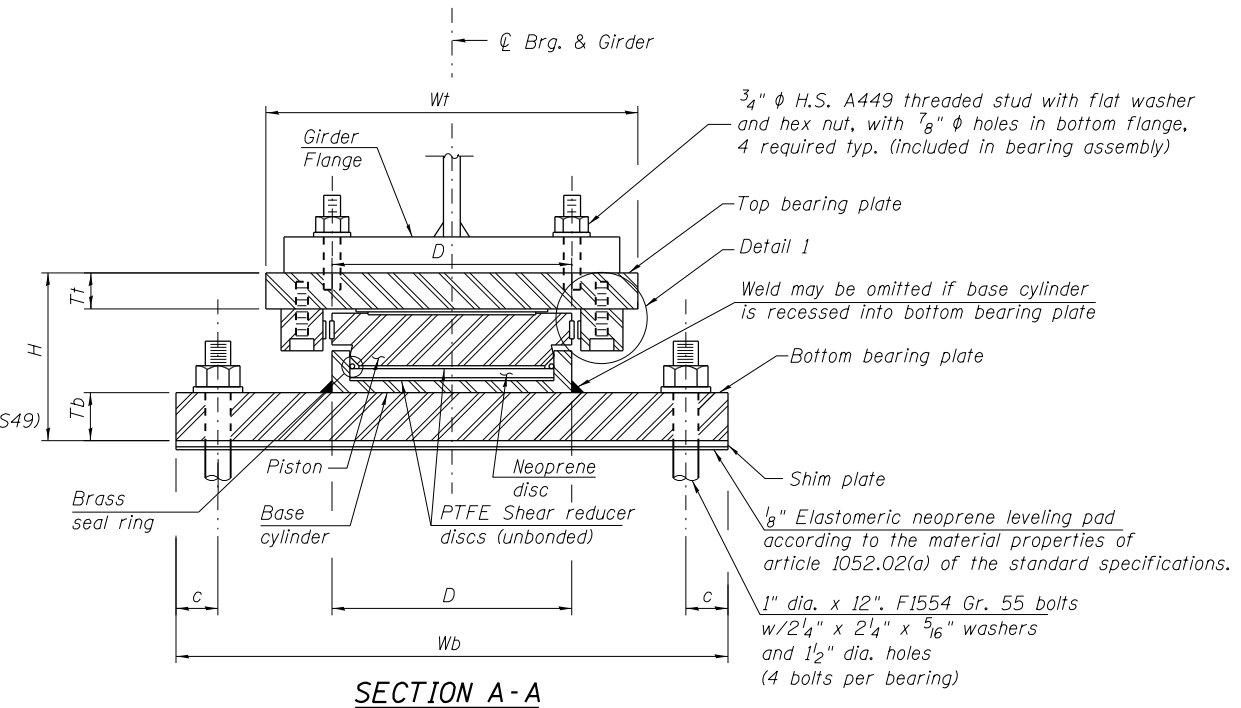


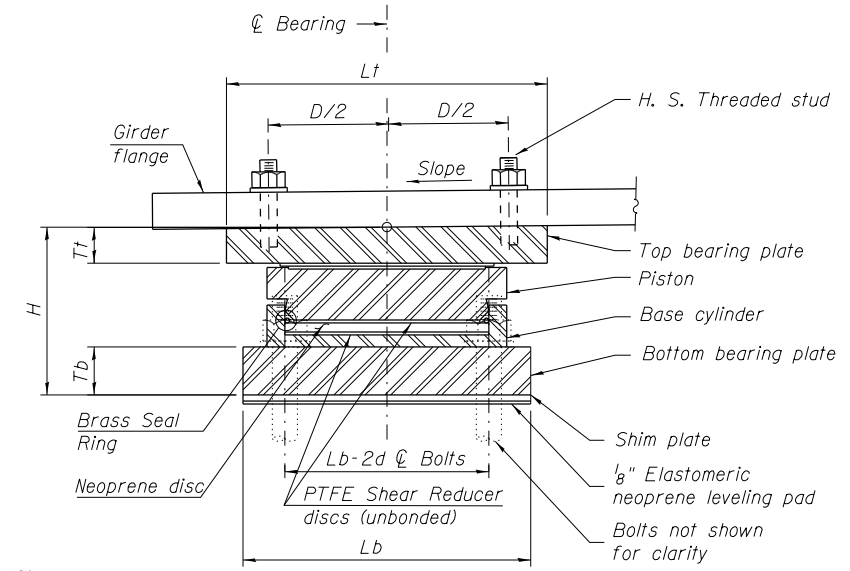
TOP BEARING PLATE AND PISTON PLAN



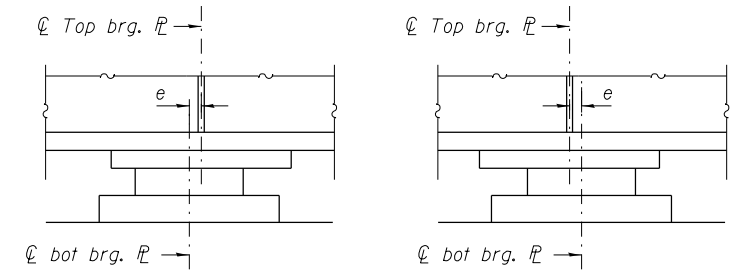
BOTTOM BEARING PLATE AND BASE CYLINDER PLAN



SECTION A-A



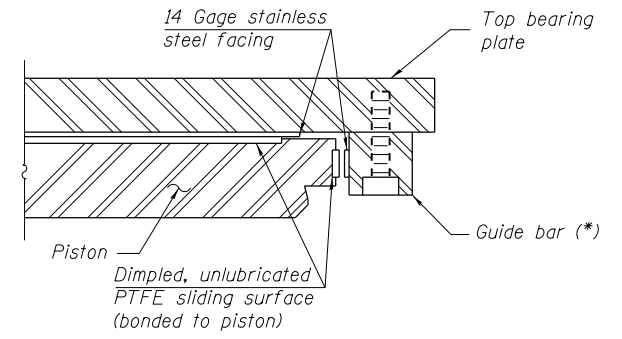
SECTION B-B
(E. Abut. Looking South)
(Pier 2 & W. Abut. Similar)



BELOW 50°F (Move bott. brg away from fixed brg.)
ABOVE 50°F (Move bott. brg toward fixed brg.)

SETTING ANCHOR BOLTS AT EXPANSION BEARINGS

NOTE: e=1/8" per each 100' of expansion for every 15° temperature change from the normal temperature of 50°F.



DETAIL 1

(*) As alternates to the bolted connection shown, The guide bars may be connected to the top bearing plate by groove welds or the guide bars and top bearing plate may be fabricated as a single piece.

Notes:
All steel for bearings shall conform to the requirements of AASHTO M270 Grade 50, unless otherwise noted.
Two 1/8 in. adjusting shims shall be provided for each bearing in addition to all other plates or shims and placed as shown on bearing details.
Anchor bolts shall be ASTM F1554 all threads (or an Engineer-approved alternate material) of the grade(s) and diameter(s) specified. The corresponding specified grade of AASHTO M314 anchor bolts may be used in lieu of ASTM F1554.
PTFE and stainless steel materials shall conform to AASHTO requirements and the Special Provisions for High Load Multi-Rotational Bearings.
Total bearing height (H) is estimated based on manufacturer data. Actual bearing height may differ from contract plans. The Contractor shall be responsible for verifying bearing heights and adjusting seat elevations, if required, prior to placing pier or abutment concrete. Modifications to the Wt dimension for bearings at abutments shall take into account the location of the backwall and required expansion length if exceeding the end of the girder.
All (embedded and separate) bearing plates, side retainers, anchor bolts, nuts, washers and pintles shall be galvanized according to AASHTO M111 or M232 as applicable.
H.S. bolts in bearing assembly shall be galvanized according to AASHTO M298 Class 50.
See Sheet S31 of S49 for Bearing Schedule.

BILL OF MATERIAL

Item	Unit	Total
High Load Multi-Rotational Bearings, Guided Expansion, 150 kips	Each	7
High Load Multi-Rotational Bearings, Guided Expansion, 250 kips	Each	14
Anchor Bolts, 1"	Each	84