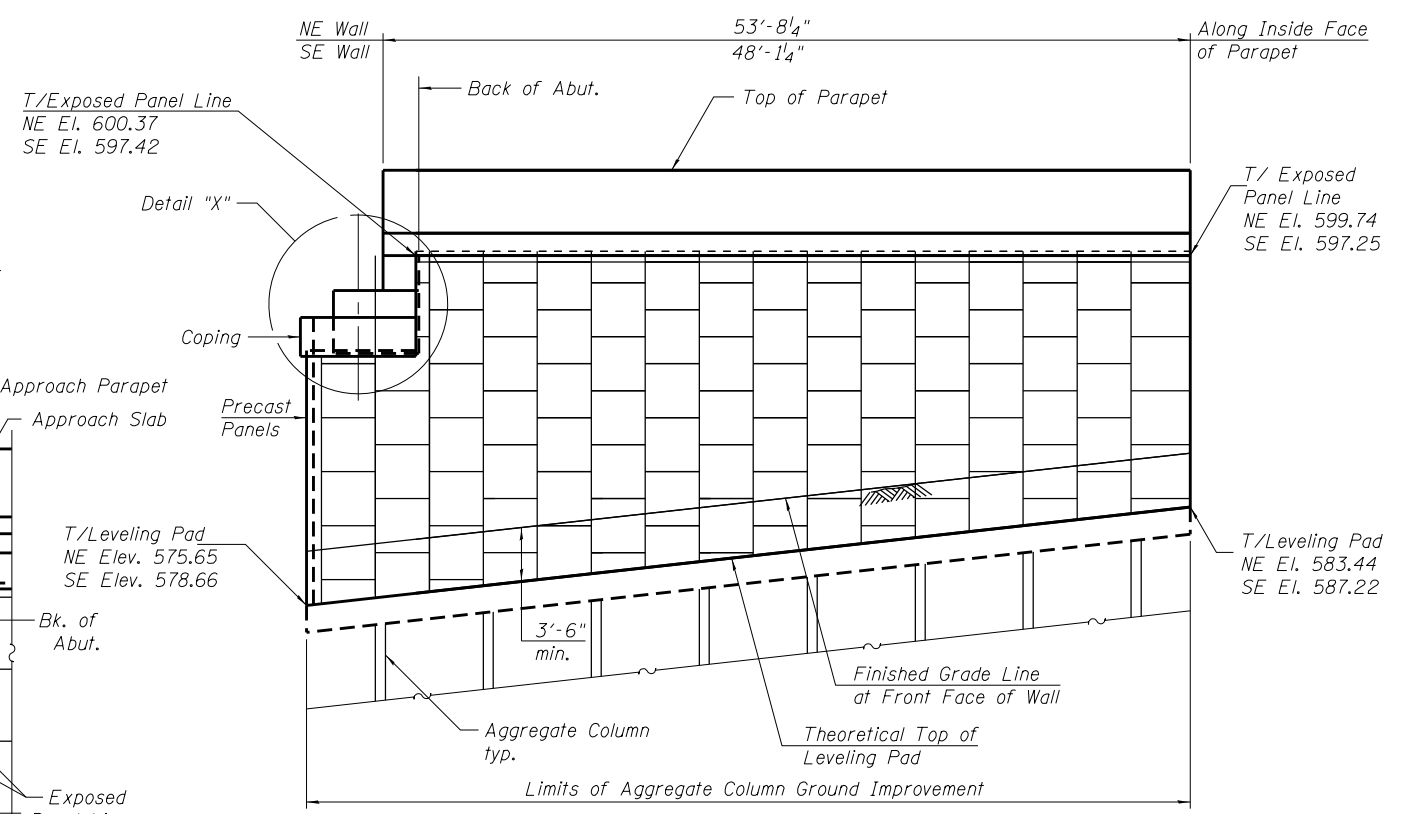
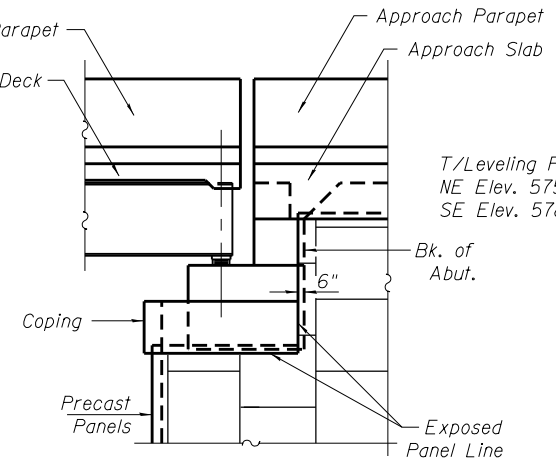


**ELEVATION**  
(Looking East)

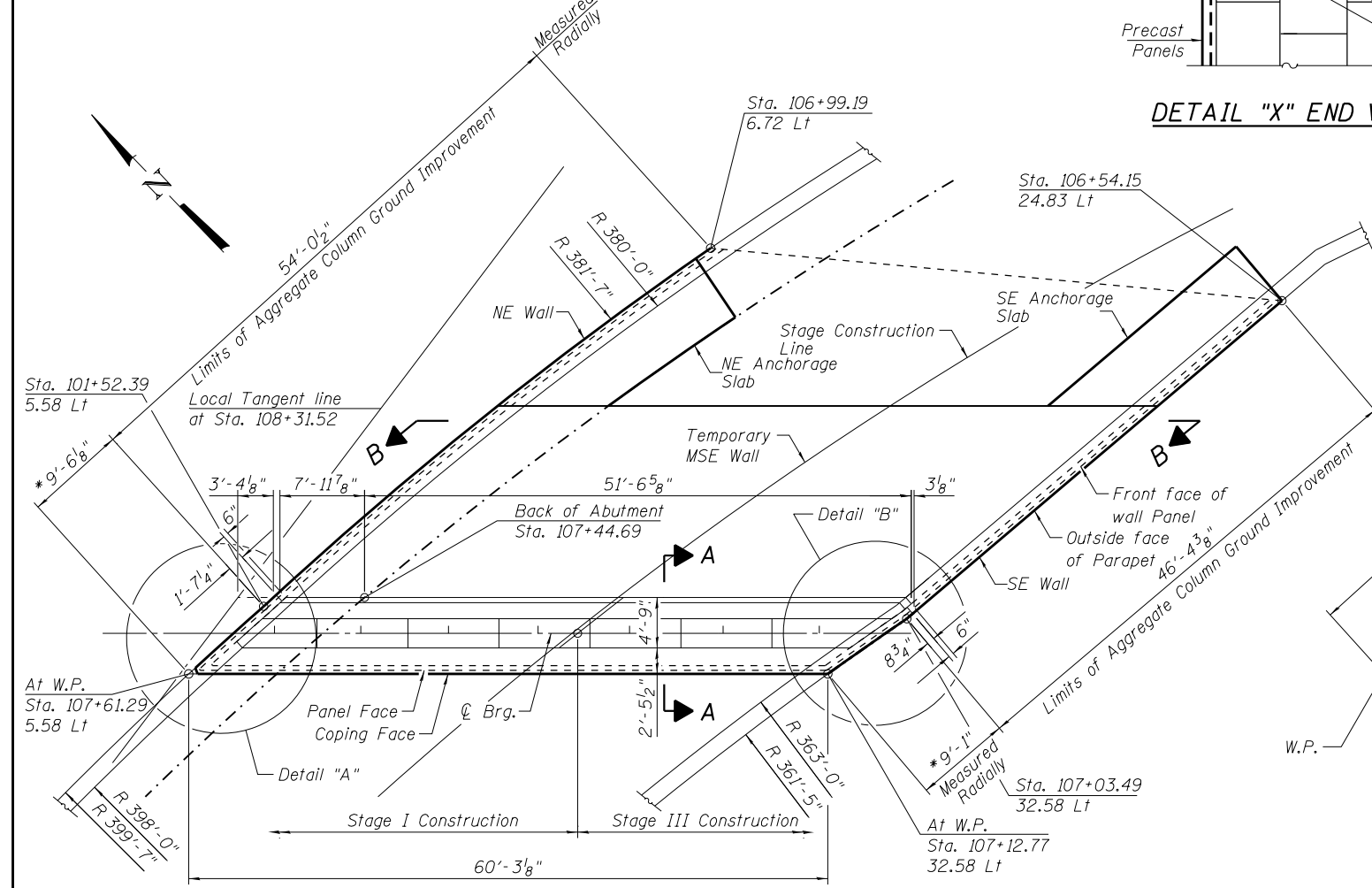


**EAST ABUTMENT M.S.E. ELEVATION**

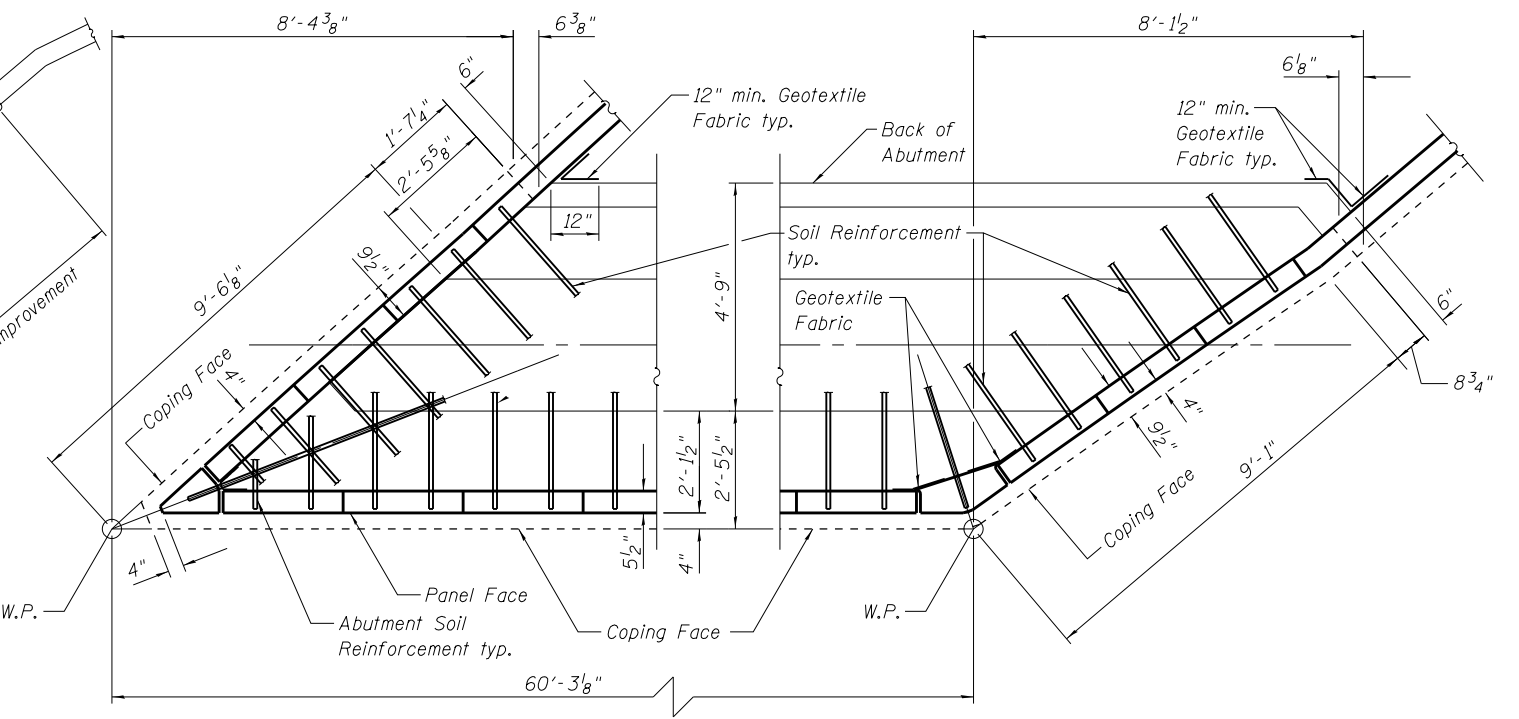


**DETAIL "X" END VIEW**

The M.S.E. wall supplier's internal stability design shall account for the anchorage slab's bearing pressure surcharge of 1.0ksf and horizontal sliding force of 0.5 kips/ft. of wall. See sheet S40 of S49 for anchorage slab details.



**PLAN**



**DETAIL "A"**

**DETAIL "B"**

The MSE supplier shall design the abutment soil reinforcement to resist a horizontal force of 3.8 kips/ft of abutment.

Note:  
For sections A-A & B-B see sheet S34 of S49.

\*Included in Limits of Aggregate Column Ground Improvement

Temporary MSE wall required for Stage Construction shall remain in place.

**COLLINS ENGINEERS**  
133 N. Rocker Dr.  
Suite 900  
Chicago, IL 60646  
Tel: (312) 704-9300  
Fax: (312) 704-9320  
www.collinsengr.com  
ILLINOIS PROFESSIONAL DESIGN FIRM LICENSE NO. 184-000993

USER NAME =	DESIGNED - MAH	REVISD
PLOT SCALE =	CHECKED - LDB	REVISD
PLOT DATE =	DRAWN - DR	REVISD
	CHECKED - JMH	REVISD

**STATE OF ILLINOIS**  
**DEPARTMENT OF TRANSPORTATION**

**EAST ABUTMENT MSE WALL DETAILS**  
**STRUCTURE NO. 016-1322**

SHEET NO. S33 OF S49 SHEETS

F.A.P. RTE.	SECTION	COUNTY	TOTAL SHEETS	SHEET NO.
0383	0303-474HB-R	COOK	368	225
CONTRACT NO. 60F63				

ILLINOIS FED. AID PROJECT