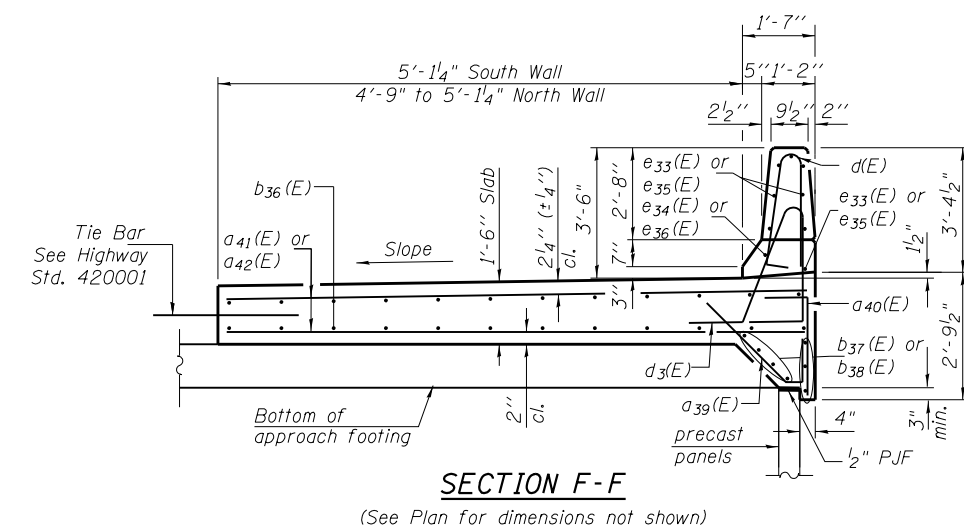
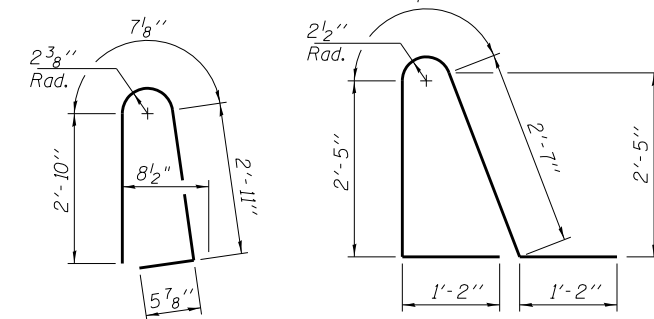
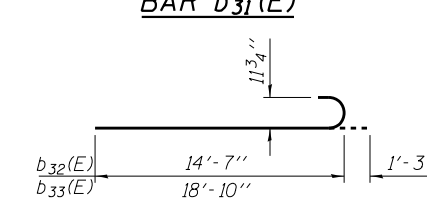
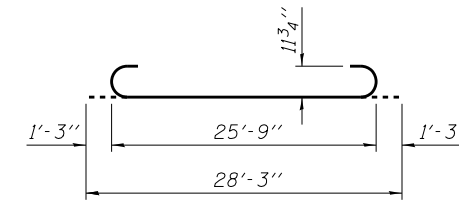
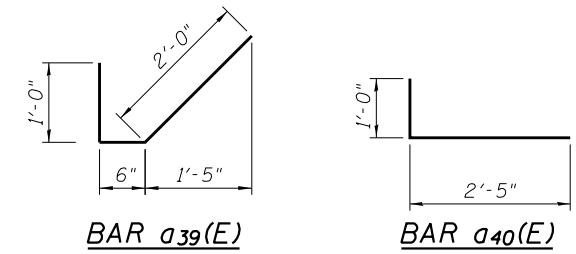
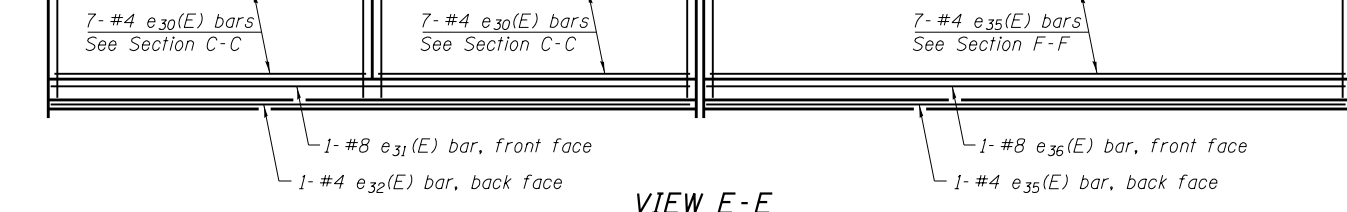
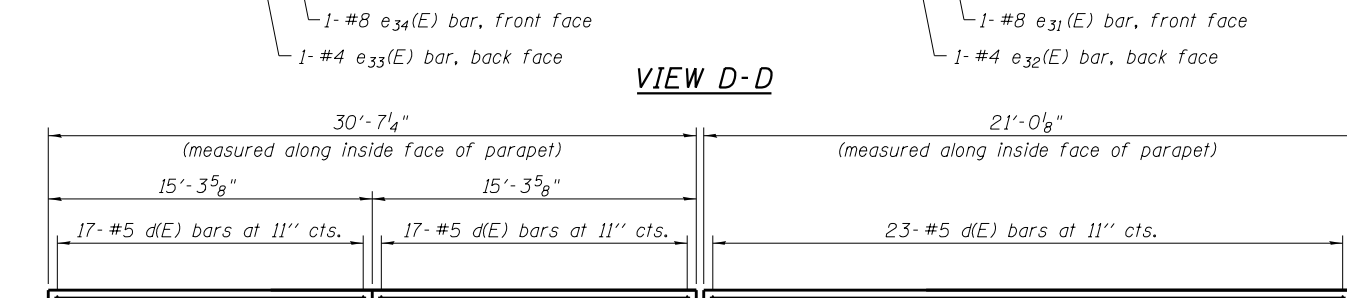
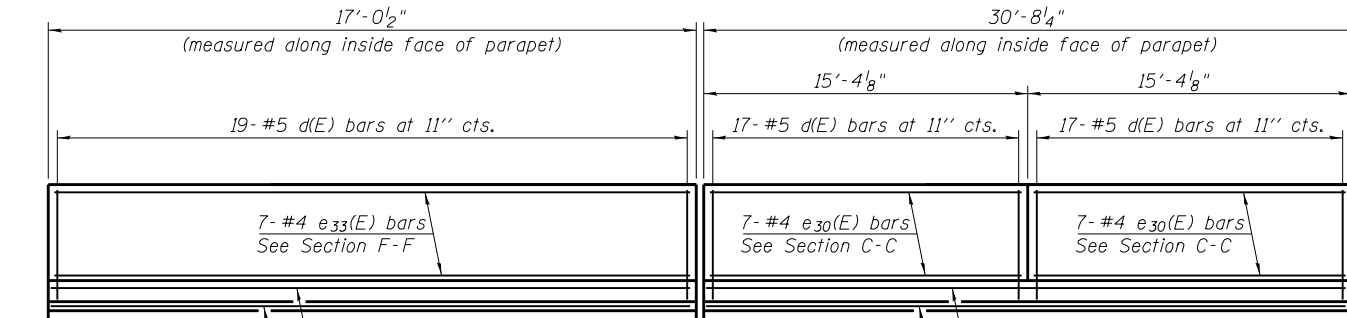
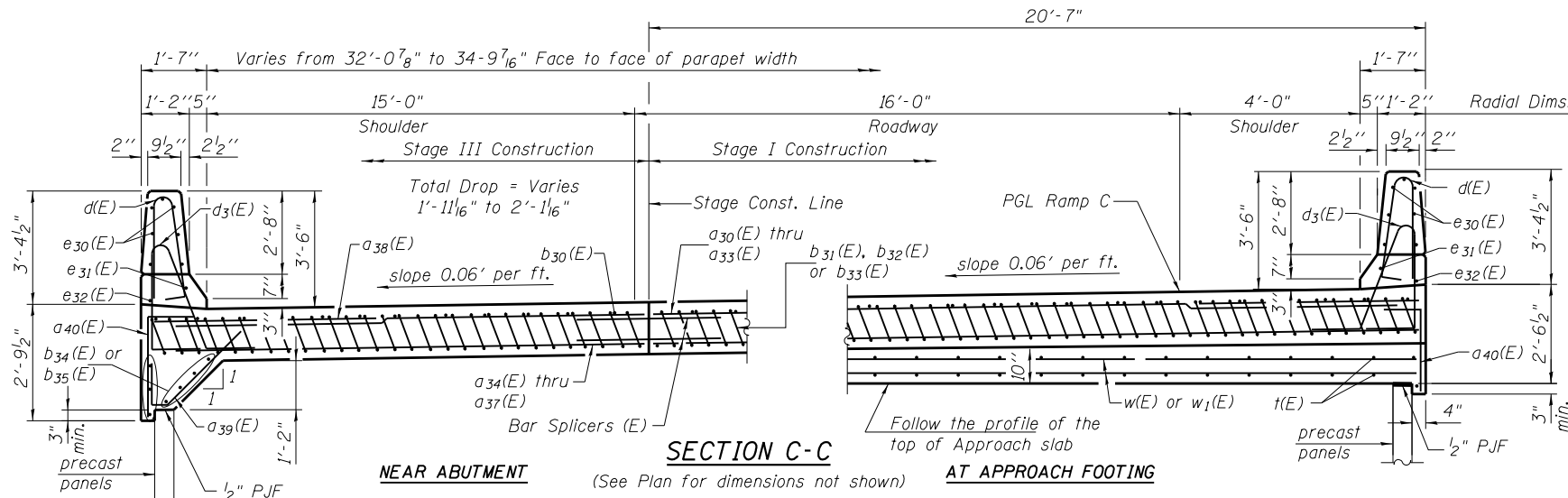
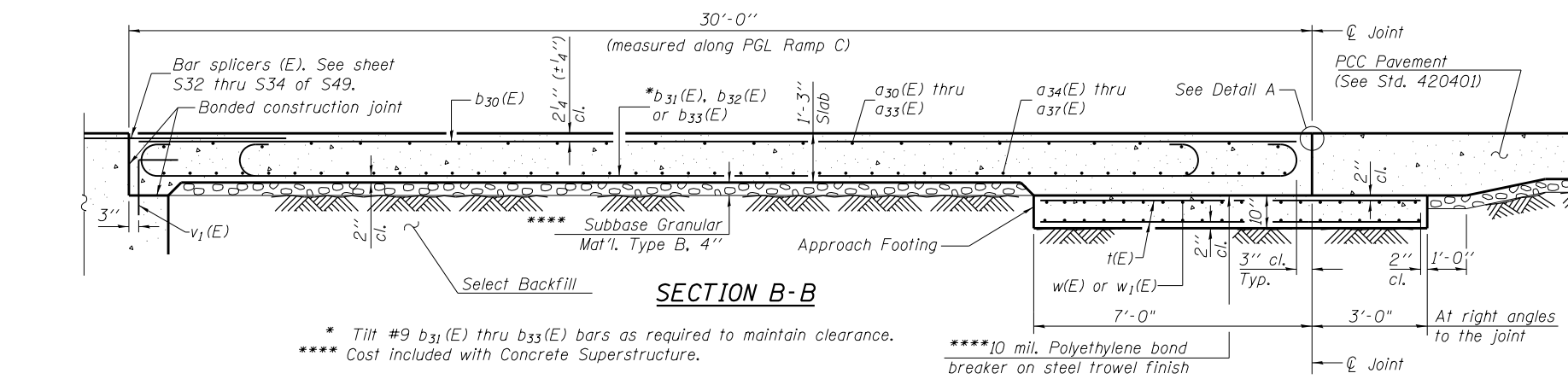


**EAST APPROACH
BILL OF MATERIAL**

Bar	No.	Size	Length	Shape
a30(E)	10	#4	36'-8"	—
a31(E)	10	#4	33'-8"	—
a32(E)	10	#4	27'-7"	—
a33(E)	10	#4	29'-4"	—
a34(E)	18	#5	36'-8"	—
a35(E)	18	#5	33'-8"	—
a36(E)	18	#5	27'-7"	—
a37(E)	18	#5	29'-4"	—
a38(E)	38	#6	6'-6"	—
a39(E)	98	#4	3'-6"	✓
a40(E)	142	#4	3'-5"	—
a41(E)	32	#6	7'-5"	—
a42(E)	58	#6	6'-2"	—
b30(E)	41	#4	28'-2"	—
b31(E)	114	#9	28'-3"	—
b32(E)	4	#9	15'-10"	—
b33(E)	4	#9	20'-1"	—
b34(E)	7	#4	17'-2"	—
b35(E)	7	#4	17'-6"	—
b36(E)	14	#5	39'-0"	—
b37(E)	7	#4	22'-10"	—
b38(E)	7	#4	15'-0"	—
d(E)	110	#5	6'-10"	—
d3(E)	110	#5	7'-11"	—
e30(E)	28	#4	15'-0"	—
e31(E)	2	#8	30'-4"	—
e32(E)	2	#4	30'-4"	—
e33(E)	8	#4	16'-9"	—
e34(E)	1	#8	16'-9"	—
e35(E)	8	#4	20'-8"	—
e36(E)	1	#8	20'-8"	—
t(E)	102	#4	15'-7"	—
w(E)	40	#5	37'-7"	—
w1(E)	40	#5	27'-2"	—
Concrete Superstructure		Cu. Yd.	82.9	
Concrete Structures		Cu. Yd.	19.4	
Bridge Deck Grooving		Sq. Yd.	113	
Protective Coat		Sq. Yd.	341	
Reinforcement Bars, Epoxy Coated		Pound	24,230	



Notes:
 Approach slab and parapet concrete shall be paid for as Concrete Superstructure.
 Approach footing concrete shall be paid for as Concrete Structures.
 Reinforcement shall be paid for as Reinforcement Bars, Epoxy Coated.
 Cost of excavation for approach footing included with Concrete Structures.
 Protective Coat shall be applied to the to the approach slab, the anchorage slabs, and the inside and top faces of the parapets.
 The approach footing maximum applied service bearing pressure (Qmax) = 2.0 ksf.
 For parapet joint details, see sheet S16 of S49.
 For v1(E) bar details, see sheets S32 thru S34 of S49.
 For Select Backfill, see sheet S34 of S49.
 See sheet S39 of S49 for Detail A.
 For bar splicer details, see sheet S43 of S49.

(Sheet 2 of 2)

USER NAME =	DESIGNED - MAH	REVISED
PLOT SCALE =	CHECKED - LDB	REVISED
PLOT DATE	DRAWN - DR	REVISED
	CHECKED - JMH	REVISED

F.A.P. RTE.	SECTION	COUNTY	TOTAL SHEETS	SHEET NO.
0383	0303-474HB-R	COOK	368	232
CONTRACT NO. 60F63			ILLINOIS FED. AID PROJECT	