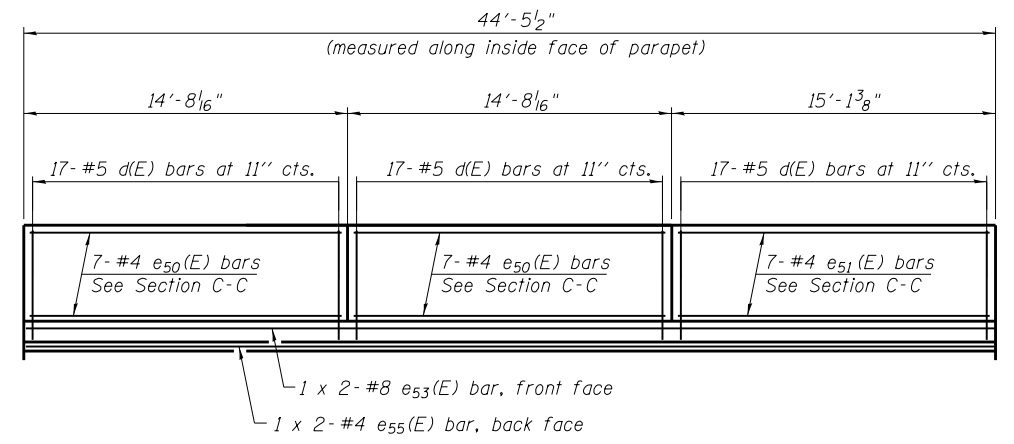
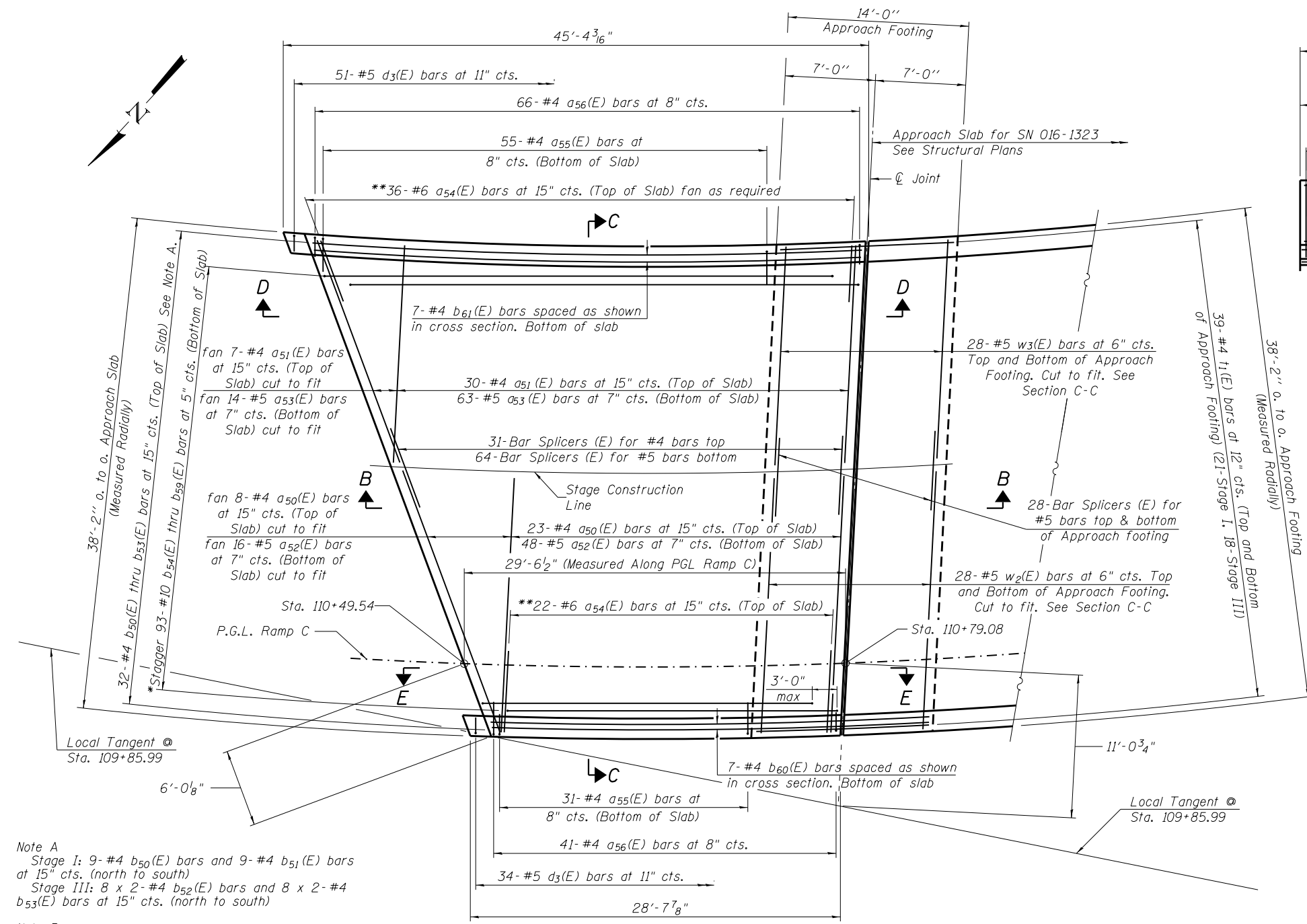
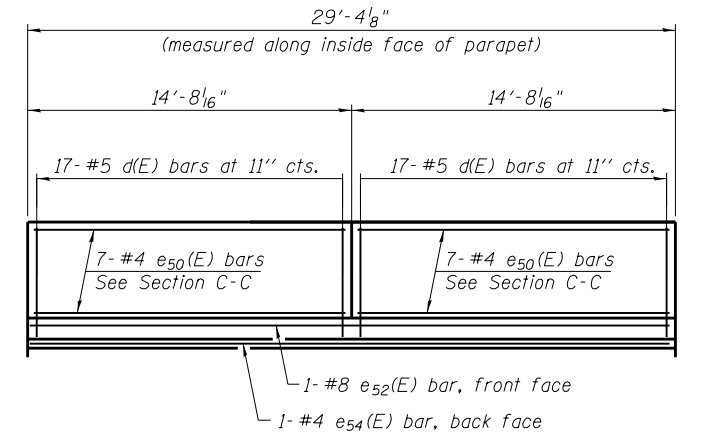


Notes:
 See sheet S42 of S49 for Sections B-B and C-C.
 a₅₀(E) thru a₅₃(E) bar spacings measured perpendicular along span.
 For parapet joint details, see sheet S16 of S49.
 Bars indicated thus 1 x 2-#4 etc. indicates 1 line of bars with 2 lengths per line.



MINIMUM BAR LAP
 (Parapet)
 #4 bar = 2'-0"
 #8 bar = 5'-2"



VIEW E-E

*** Cost included with Concrete Superstructure.

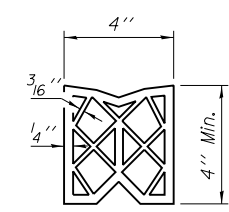
Note A
 Stage I: 9-#4 b₅₀(E) bars and 9-#4 b₅₁(E) bars at 15" cts. (north to south)
 Stage III: 8 x 2-#4 b₅₂(E) bars and 8 x 2-#4 b₅₃(E) bars at 15" cts. (north to south)

Note B
 Stage I: 17-#10 b₅₄(E), 17-#10 b₅₅(E) and 16-#10 b₅₆(E) bars at 5" cts. (north to south)
 Stage III: 13-#10 b₅₇(E), 15-#10 b₅₈(E) and 15-#10 b₅₉(E) bars at 5" cts. (north to south)

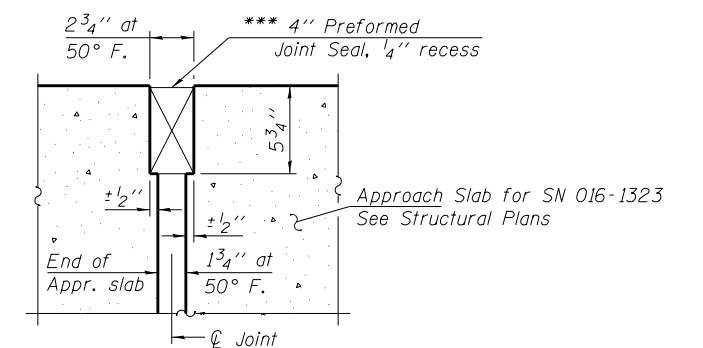
PLAN

* Tilt #9 b₅₄(E) thru b₅₉(E) bars as required to maintain clearance. See Note B.
 ** Space between a₅₀(E) bars in the north parapet and a₅₁(E) bars in the south parapet.

MINIMUM BAR LAP
 #4 bar = 2'-7"



PREFORMED JOINT SEAL



RIGID PAVEMENT

DETAIL A

(Sheet 1 of 2)

COLLINS ENGINEERS <small>133 N. Wacker Dr. Suite 900 Chicago, IL 60606 Tel: (312) 704-3300 Fax: (312) 704-9320 www.collinsengr.com ILLINOIS PROFESSIONAL DESIGN FIRM LICENSE NO. 184-000993</small>	USER NAME =	DESIGNED - MAH	REVISED	STATE OF ILLINOIS DEPARTMENT OF TRANSPORTATION	WEST BRIDGE APPROACH SLAB DETAILS STRUCTURE NO. 016-1322	F.A.P. R.T.E. =	SECTION	COUNTY	TOTAL SHEETS	SHEET NO.
	PLOT SCALE =	CHECKED - LDB	REVISED			0383	0303-474HB-R	COOK	368	223
	PLOT DATE =	DRAWN - DR	REVISED			CONTRACT NO. 60F63				
	CHECKED - JMH	REVISED		SHEET NO. S41 OF S49 SHEETS			ILLINOIS FED. AID PROJECT			