

**FABRIC BEARING PAD**

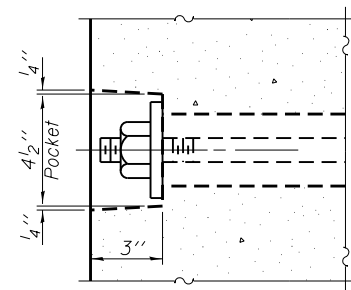
(Interior)

**FABRIC BEARING PAD**

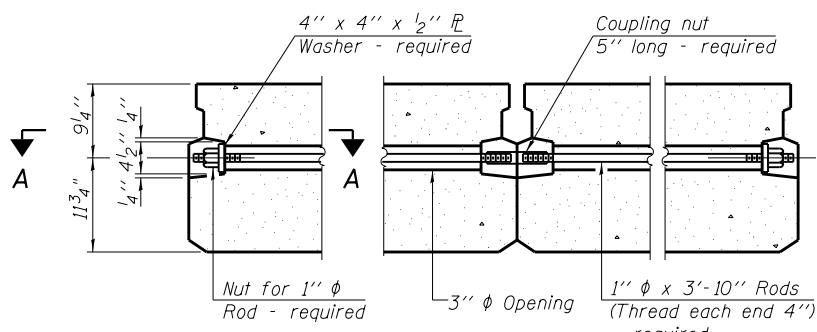
(Exterior)

**FIXED**

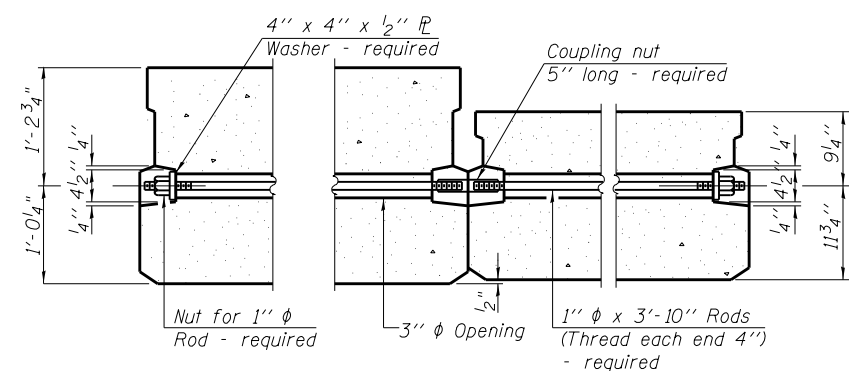
Notes:  
All bearing pads shall be 1" thick.  
Cost included with Precast Prestressed Concrete Deck Beams (21" depth).



**SECTION A-A**

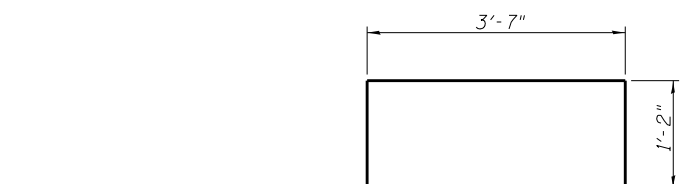


**TYPICAL TRANSVERSE TIE ASSEMBLY**

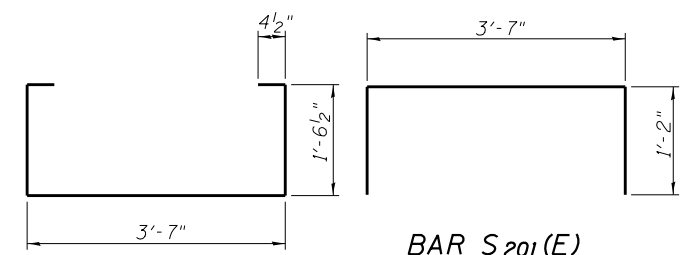


**TRANSVERSE TIE ASSEMBLY**

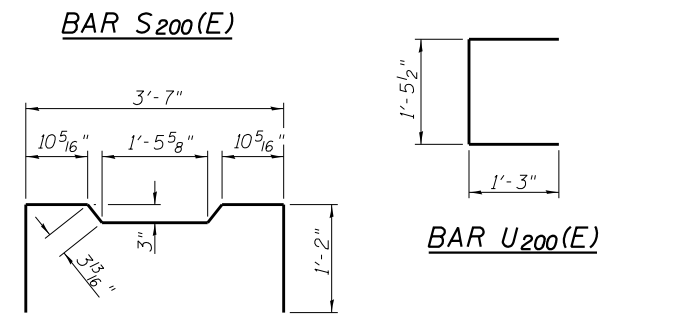
Between 21" and 27" beams



**BAR D 200(E)**

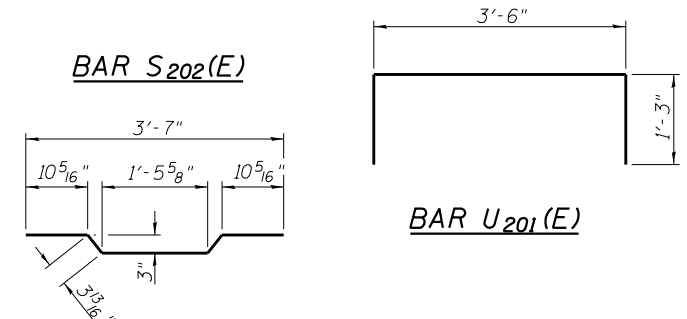


**BAR S 201(E)**



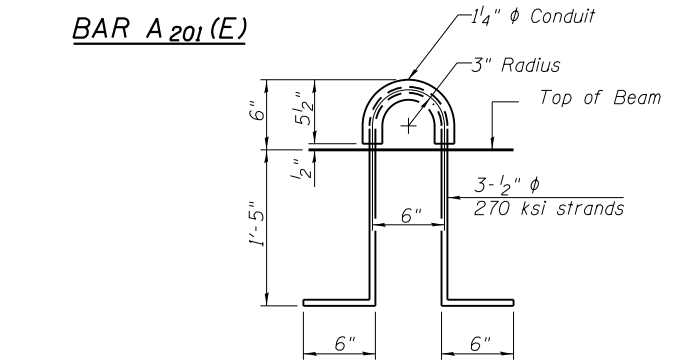
**BAR S 200(E)**

**BAR U 200(E)**



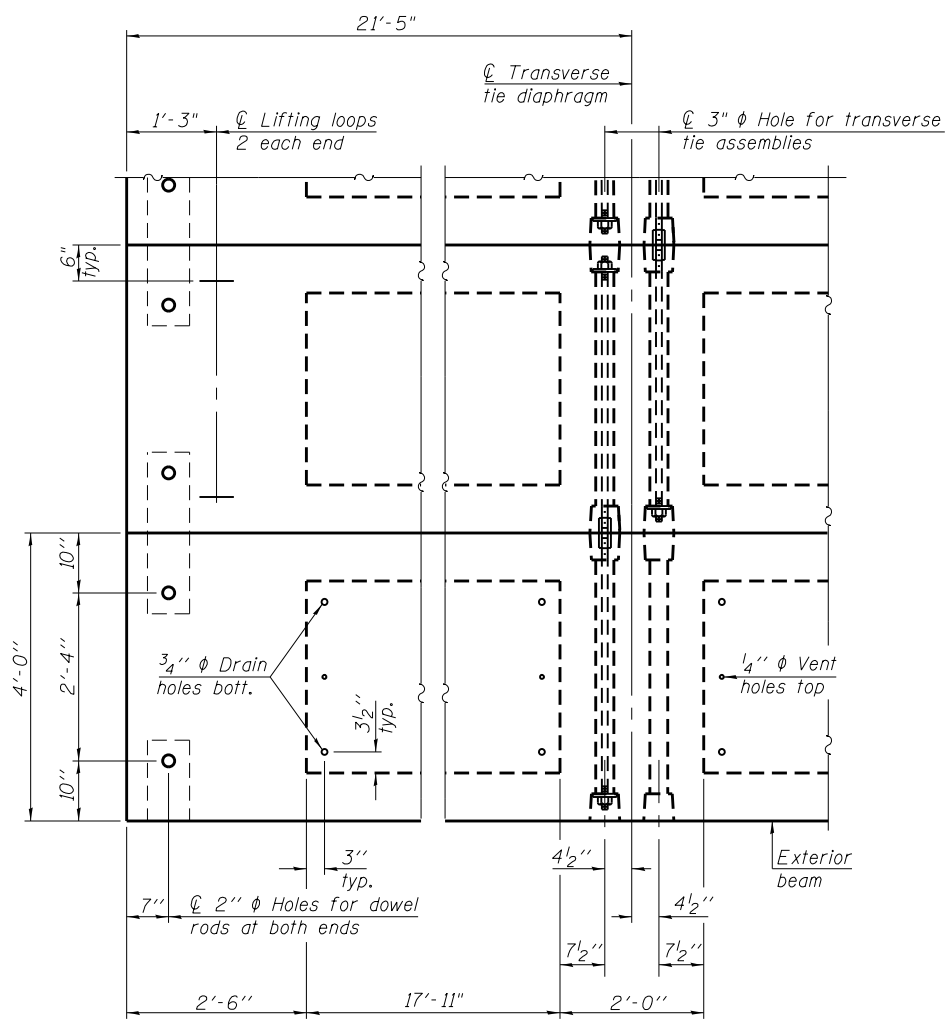
**BAR S 202(E)**

**BAR U 201(E)**

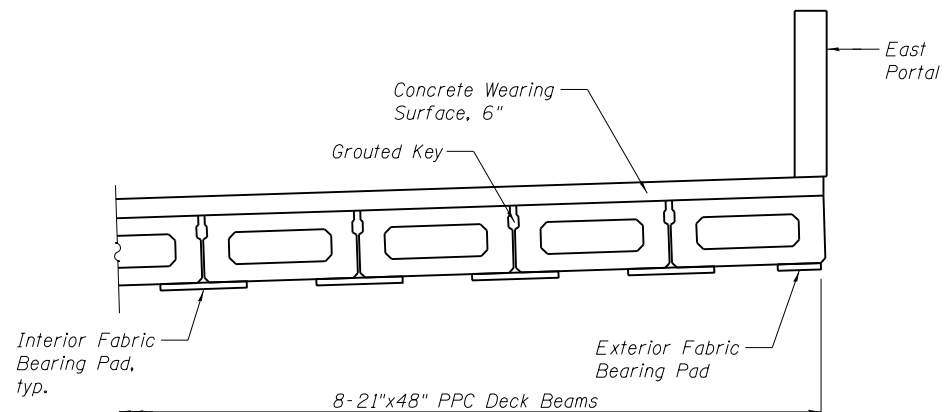


**BAR A 201(E)**

**LIFTING LOOP DETAIL**



**PLAN VIEW**



**PARTIAL CROSS SECTION**

**NOTES**

Prestressing steel shall be uncoated high strength, low relaxation 7-wire strand, Grade 270. The nominal diameter shall be 1/2" and the nominal cross-sectional area shall be 0.153 sq. in.  
The 1" rods in the transverse tie assembly shall be tightened to a snug fit and the threads set. Pockets on exterior faces of bridge shall be filled with grout after transverse tie assembly is in place.  
Reinforcement bars shall conform to ASTM A 706, Grade 60. (See Special Provisions).  
Two 1/8" fabric adjusting shims of the dimensions of the exterior bearing pad shall be provided for each bearing pad location.  
A minimum 2 1/2" diameter lifting pin shall be used to engage the lifting loops during handling.  
Corrosion Inhibitor, per Article 1020.05(b)(12) and 1021.06 of the Standard Specifications, shall be used in the concrete for precast prestressed concrete deck beams.  
Compressive strength of prestressed concrete, f'c, shall be 6000 psi.  
Compressive strength of prestressed concrete at release, f'ci, shall be 5000 psi.

Notes:  
Connect beams in pairs with the transverse tie configuration shown.  
Cost included with Precast Prestressed Concrete Deck Beams (21" depth).  
Cost of dowel rods, with drilling and grouting, is included with Precast Prestressed Concrete Deck Beams (21" depth).

**BILL OF MATERIAL**

Precast Prestressed Conc. Deck Bms. (21" depth)	Sq. Ft.	1,371
---	---------	-------

PD-2148-OD

7-1-10

**COLLINS ENGINEERS**  
133 N. Wacker Dr.  
Suite 900  
Chicago, IL 60606  
Tel: (312) 704-9300  
Fax: (312) 704-9320  
www.collinsengr.com  
ILLINOIS PROFESSIONAL DESIGN FIRM LICENSE NO. 184-000993

USER NAME =	DESIGNED - EKM	REVISED
	CHECKED - LDB	REVISED
PLOT SCALE =	DRAWN - PRH	REVISED
PLOT DATE =	CHECKED - EKM	REVISED

**STATE OF ILLINOIS**  
**DEPARTMENT OF TRANSPORTATION**

**21" x 48" PPC DECK BEAM DETAILS**  
**STRUCTURE NO. 016-2573**

SHEET NO. ST6 OF ST30 SHEETS

F.A.I. RT.E.	SECTION	COUNTY	TOTAL SHEETS	SHEET NO.
90/94	0303-474HB-R	COOK	368	288
CONTRACT NO. 60F63				
ILLINOIS FED. AID PROJECT				