

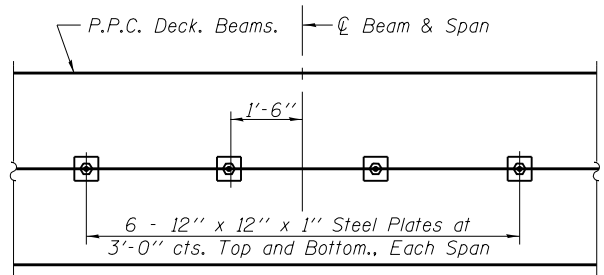
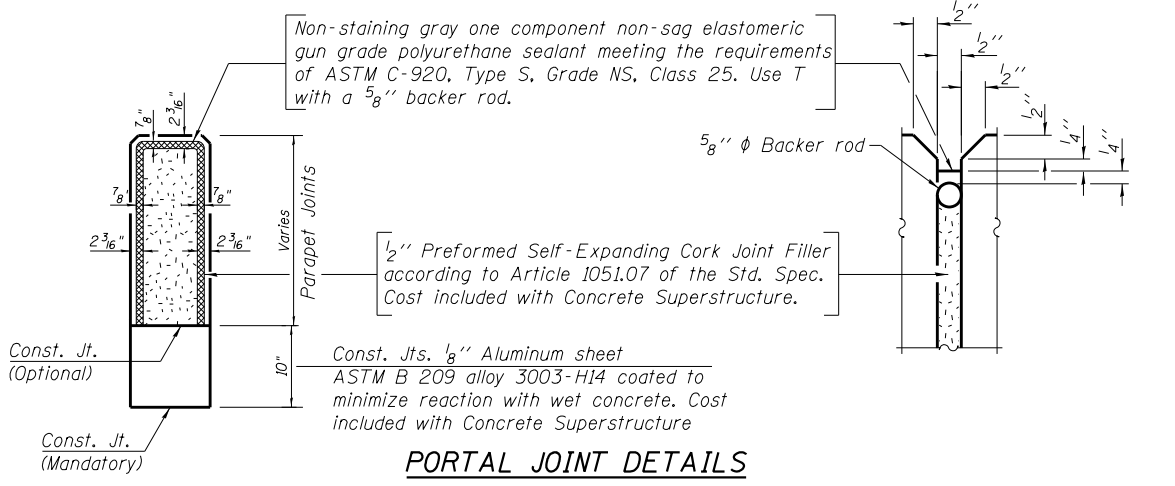
* Place #4 D₂₀₀(E) bars at 9" cts. in fascia beam. D₂₀₀(E) bar included in cost of beam.
 ** Stage II Construction not shown. It involves the removal of the existing structure S.N. 016-1003 See Roadway Plans for details.
 **** Except at North Abutment see sheet ST12 for Portal details.

SECTION A-A

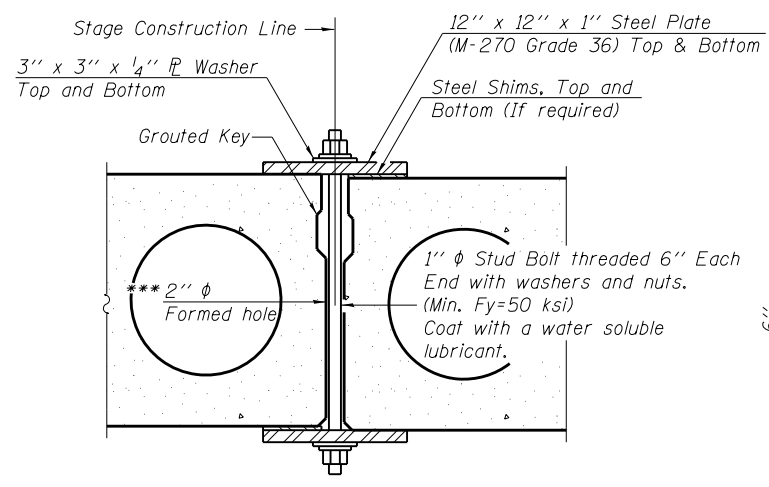
SECTION B-B
 Embankment and Protective Concrete Slab not shown.

SECTION C-C
 Embankment and Protective Concrete Slab not shown.

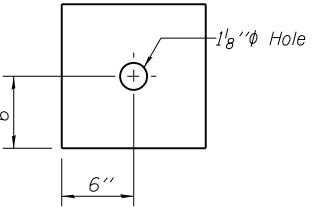
SECTION D-D



PLAN



SECTION



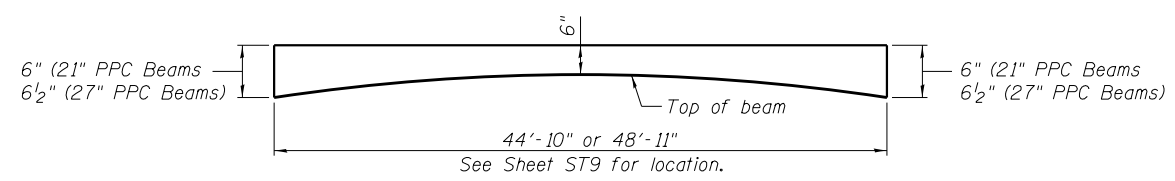
CLAMPING PLATE

SHEAR KEY CLAMPING DETAILS AT STAGE CONST. JT.

Cost included with Precast Prestressed Concrete Deck Beams.
 See Stage Construction Details for traffic lanes.

*** Cast semicircular recesses in the sides of each beam adjacent to the stage construction line. These recesses should align to form a hole at the appropriate locations for the clamping device bolts.

Note:
 After the removal of existing beams for Stage I removal, the Contractor shall verify that the transverse ties in the existing beams are tightened for Stage I traffic.



ANTICIPATED CONCRETE WEARING SURFACE PROFILE
 (For information only)

USER NAME =	DESIGNED - EKM	REVISED
PLOT SCALE =	CHECKED - LDB	REVISED
PLOT DATE =	DRAWN - PRH	REVISED
	CHECKED - EKM	REVISED

F.A.I. R.T.E.	SECTION	COUNTY	TOTAL SHEETS	SHEET NO.
90/94	0303-474HB-R	COOK	368	292
CONTRACT NO. 60F63				
ILLINOIS FED. AID PROJECT				