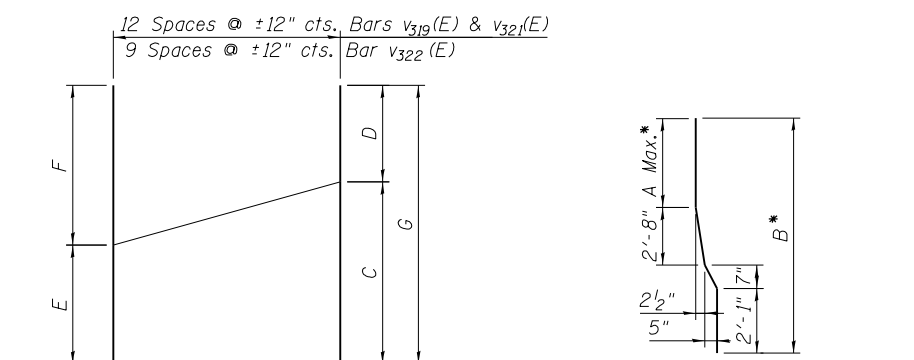
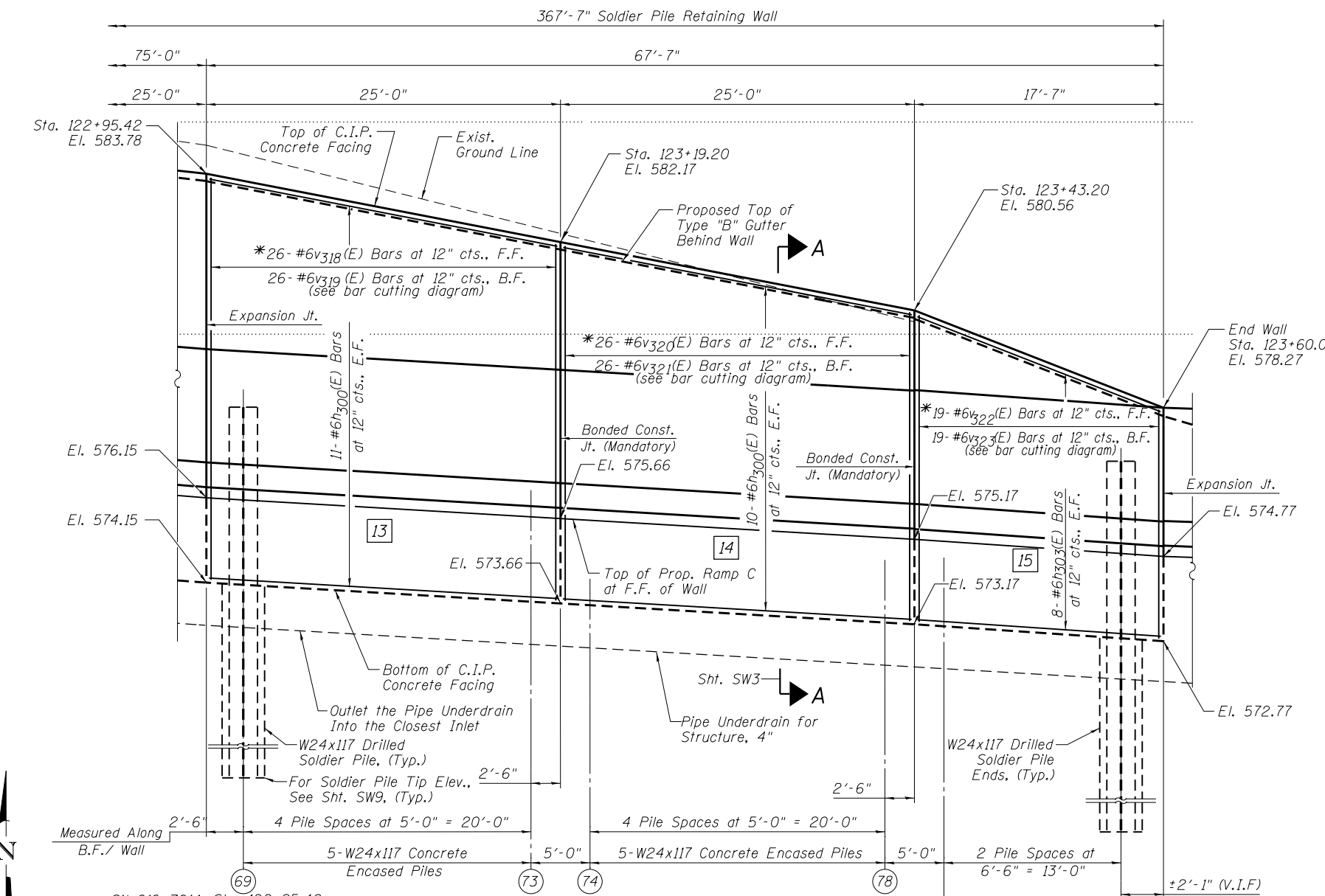


**Notes:**

1. Wall dimensions are measured along F.F. of wall. See sheet SW1 for location.
2. Stations and offsets for the wall are given from the Ramp C to the F.F. of wall.
3. Fan Horizontal bars (h Bars) at 12" cts. max.

REINFORCEMENT BAR LIST				
Bar	No.	Size	Length	Shape
$h_{300}(E)$	42	#6	24'-8"	—
$h_{303}(E)$	16	#6	17'-4"	—
$v_{318}(E)$	26	#6	9'-6"	—
$v_{319}(E)$	13	#6	17'-6"	—
$v_{320}(E)$	26	#6	8'-4"	—
$v_{321}(E)$	26	#6	15'-3"	—
$v_{322}(E)$	19	#6	7'-3"	—
$v_{323}(E)$	10	#6	12'-3"	—



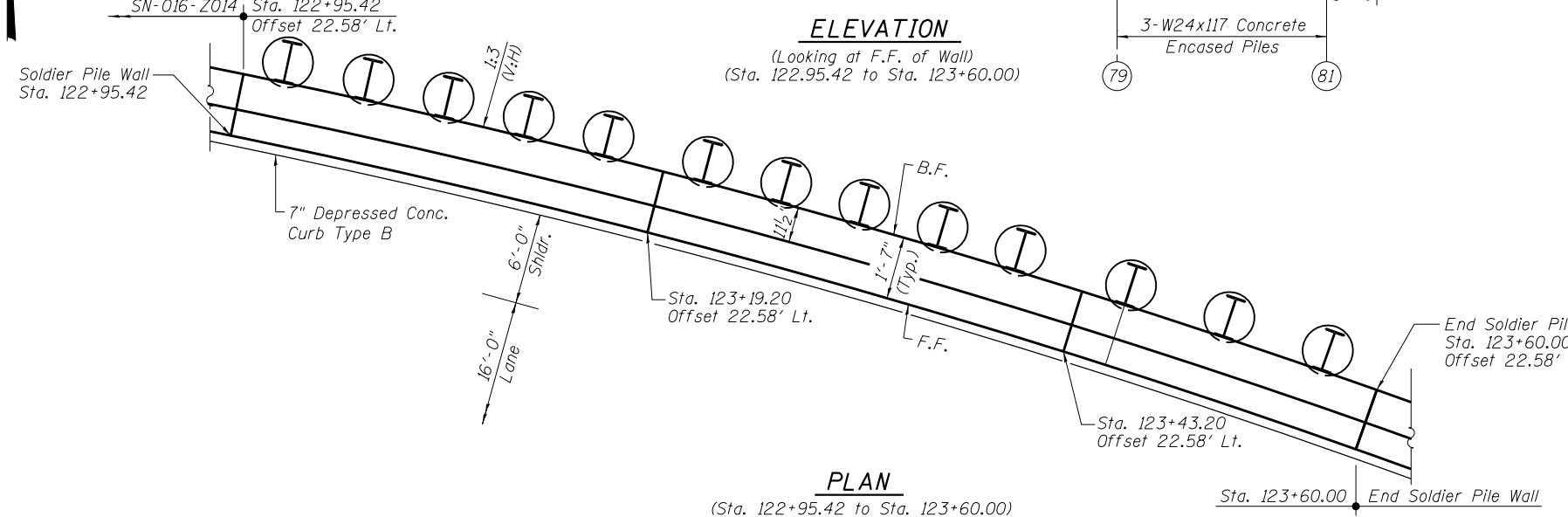
BARS $v_{319}(E)$ , $v_{321}(E)$ , $v_{323}(E)$					
Bar	C	D	E	F	G
$v_{319}(E)$	9'-4"	8'-2"	8'-10"	8'-8"	17'-6"
$v_{321}(E)$	8'-2"	7'-1"	7'-8"	7'-7"	15'-3"
$v_{323}(E)$	7'-1"	5'-2"	6'-7"	5'-8"	12'-3"

BARS $v_{318}(E)$ , $v_{320}(E)$ , $v_{322}(E)$		
Bar	A	B
$v_{318}(E)$	4'-11"	9'-4"
$v_{320}(E)$	4'-6"	8'-2"
$v_{322}(E)$	4'-3"	7'-1"

**BAR CUTTING DIAGRAM**  
\* Order Bars Full Length, Cut to Fit

\* Cut in Field to Fit



- LEGEND**
- E.F. = Each face
  - F.F. = Front Face
  - B.F. = Back Face
  - C.I.P. = Cast-In-Place
  - (C) = Construction Joint
  - (E) = Expansion Joint
  - (A) = Panel Numbers
  - (12) = Pile Numbers

BILL OF MATERIAL		
DESCRIPTION	UNIT	QUANTITY
Structure Excavation	Cu. Yd.	85.6
Concrete Structures	Cu. Yd.	24
Stud Shear Connectors	Each	152
Reinforcement Bars, Epoxy Coated	Pound	3,700
Concrete Sealer	Sq. Ft.	480
Geocomposite Wall Drain	Sq. Yd.	18
Untreated Timber Lagging	Sq. Ft.	427
Furnishing Soldier Piles (W Section)	Foot	572
Pipe Underdrains for Structures 4"	Foot	68
Drilling and Setting Soldier Piles (In Soil)	Cu. Ft.	4,033

**NOTE:**  
For Top of Pile Elevations & Pile Tip Elevations, see Soldier Pile Schedule, Sht. SW9.