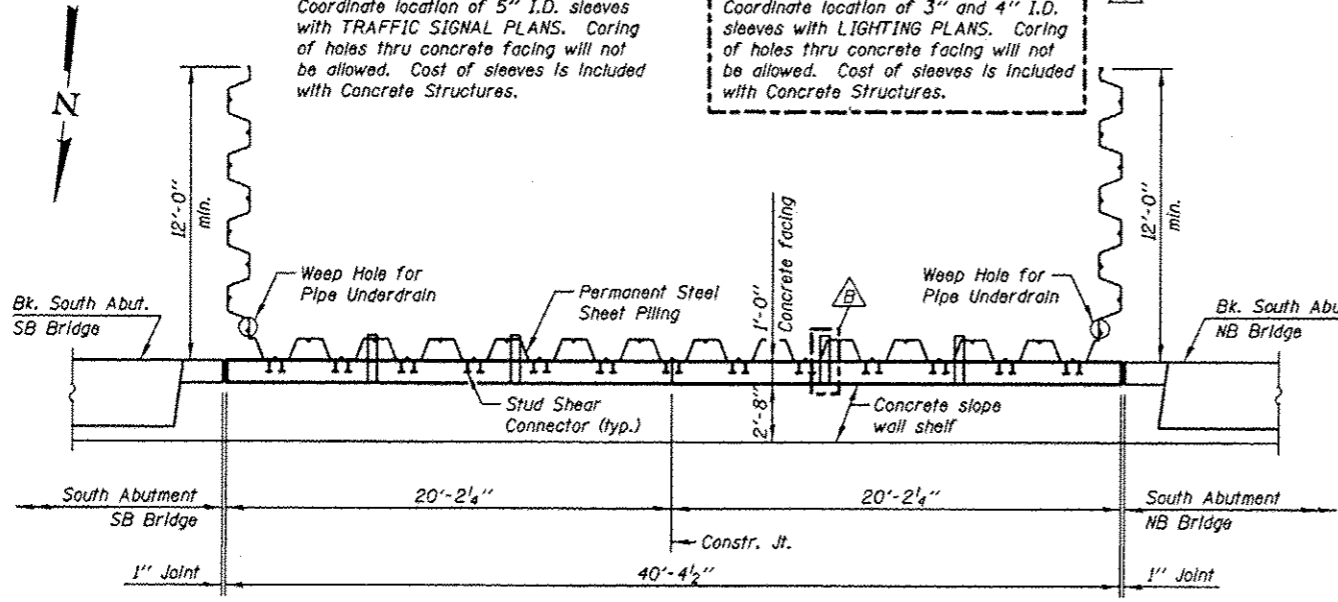


ELEVATION - NORTH FACE
(Looking South)

NOTE A
Coordinate location of 5\"/>

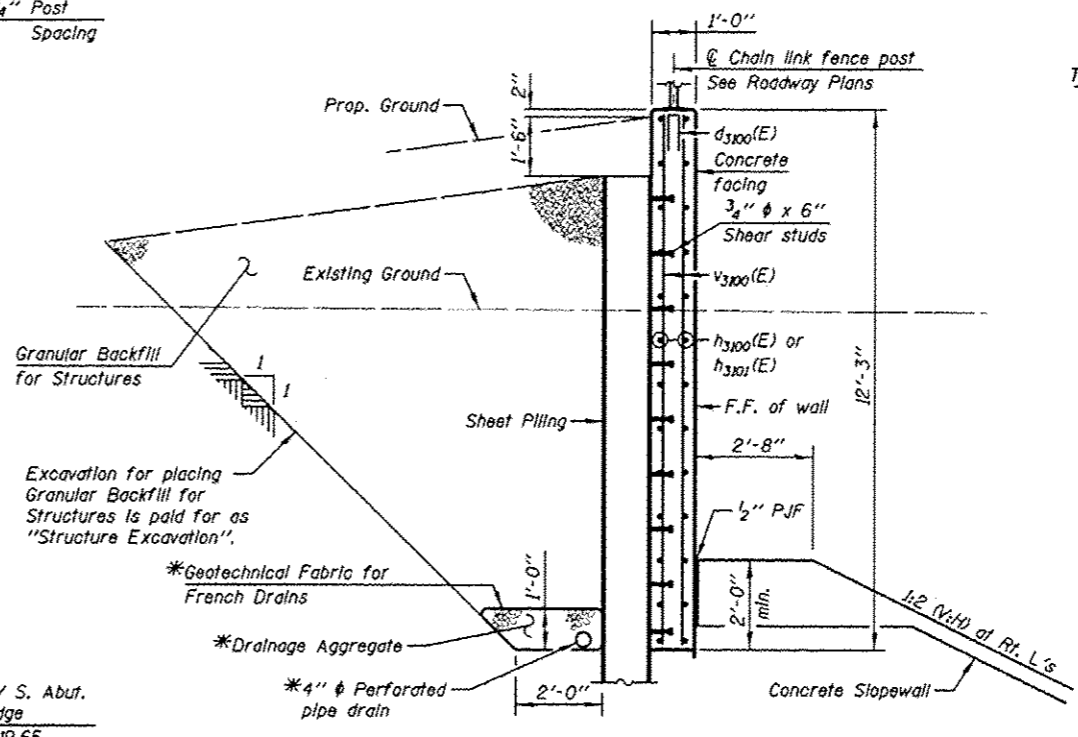
NOTE B
Coordinate location of 3\"/>



PLAN

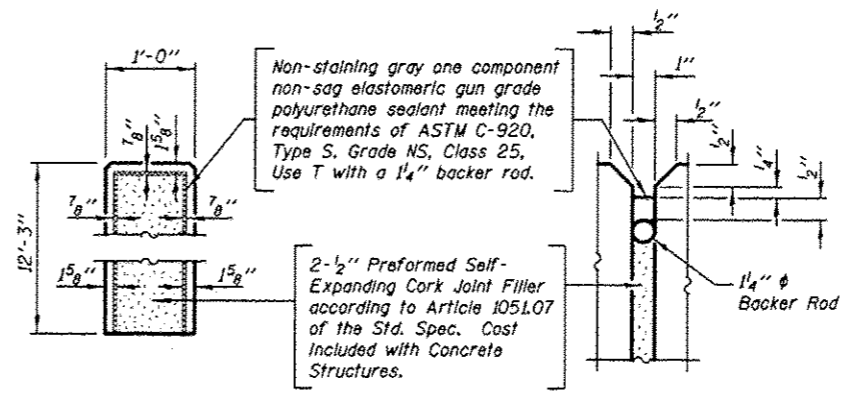
DESIGN CRITERIA

Required Section Modulus = 28.6 In³/ft
Minimum Tip Elevation = 697.00

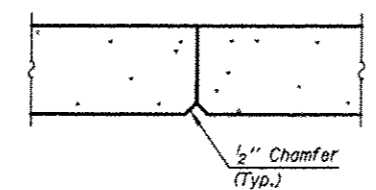


SECTION THRU SHEET PILING WALL

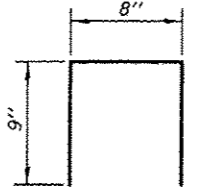
*Included in the cost of Pipe Underdrains for Structures.



1\"/>

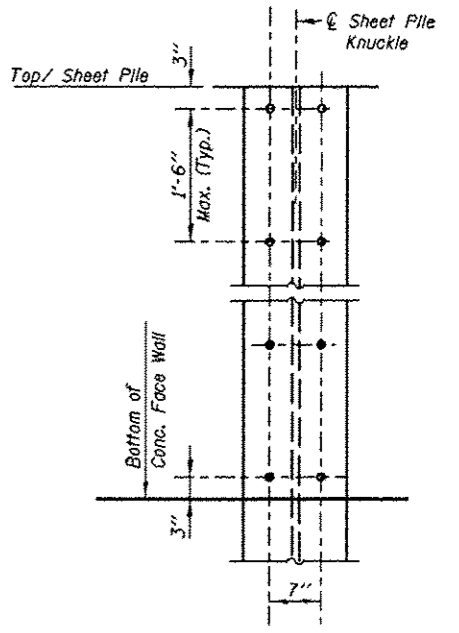


CONSTRUCTION JOINT DETAIL



BAR d3100(E)

3/4\"/>



STUD SHEAR CONNECTORS LAYOUT

BILL OF MATERIAL

BAR	NO.	SIZE	LENGTH	SHAPE
d3100(E)	8	#4	2'-2"	□
h3100(E)	52	#5	19'-10"	—
h3101(E)	26	#5	6'-0"	—
v3100(E)	84	#5	11'-11"	—
Structure Excavation			Cu. Yd.	97.0
Concrete Structures			Cu. Yd.	20.0
Stud Shear Connectors			Each	234
Reinforcement Bars, Epoxy Coated			Pound	2300
Permanent Steel Sheet Piling			Sq. Ft.	2171.0
Granular Backfill for Structures			Cu. Yd.	115.0
Pipe Underdrains for Structures 4"			Foot	40.0

NOTES

See Sheet SA-44, SA-46 and SA-48 for South Abutment Details.

MIN. BAR LAP
#5 - 2'-5"

TOLLWAY WALL EW123.3R,EB

KNIGHT Engineers & Architects	DESIGNED	WPM	REVISED	5/31/2013	WPM	STATE OF ILLINOIS DEPARTMENT OF TRANSPORTATION	RETAINING WALL - SOUTH ABUTMENT S.N. 022-2029 (SB) TOLLWAY B.N. 826 S.N. 022-2030 (NB) TOLLWAY B.N. 825	F.A.P. RTE.	SECTION	COUNTY	TOTAL SHEET NO.	
	CHECKED	TB	REVISED					338	(112 & 113) WRS-5	DUPAGE	963	633
	SCALE	NONE	DRAWN	TB	REVISED				CONTRACT NO. 60131		ILLINOIS FED. AID PROJECT	
	DATE	10/15/2012	CHECKED	WPM	REVISED							