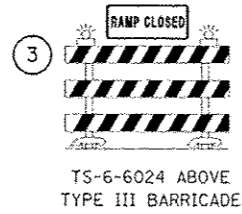
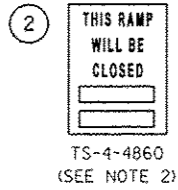
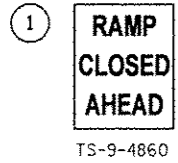
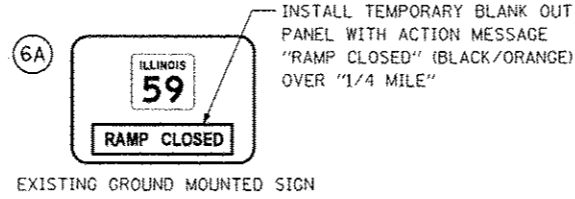
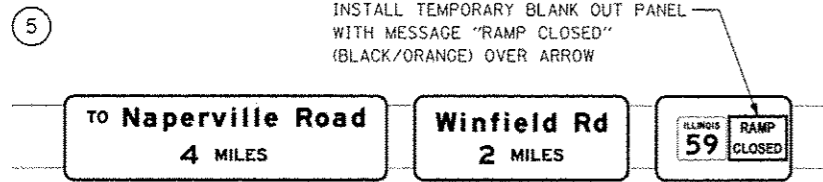


**SIGN LEGEND**

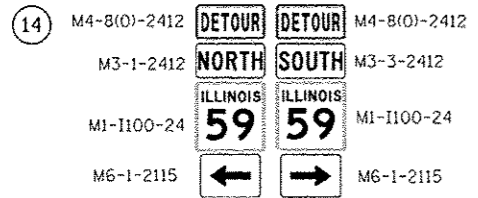
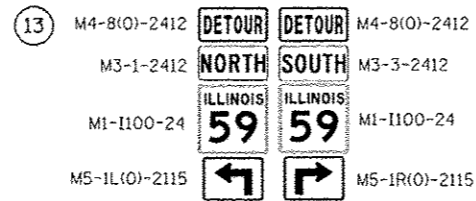
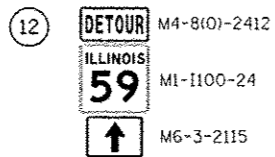


- ④ N/A THIS SHEET  
⑤ (SEE BELOW)  
⑥ N/A THIS SHEET

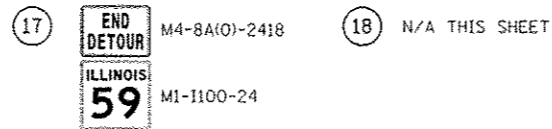


- ⑦ N/A THIS SHEET  
⑧ N/A THIS SHEET  
⑨ N/A THIS SHEET

- ⑩ N/A THIS SHEET  
⑪ N/A THIS SHEET



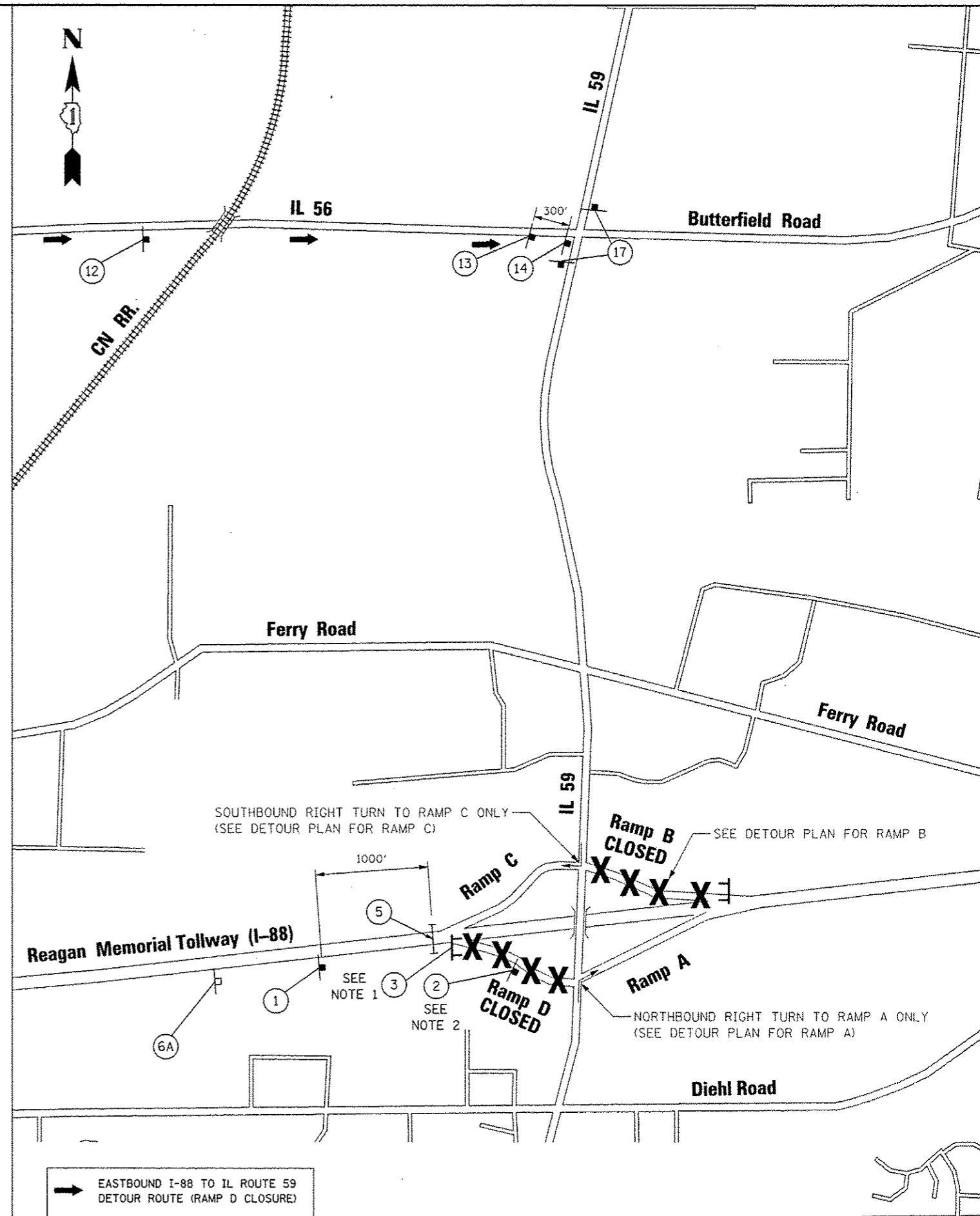
- ⑮ N/A THIS SHEET  
⑯ N/A THIS SHEET



**NOTES**

- SEE MAINTENANCE OF TRAFFIC PLANS FOR RAMP CLOSURE DETAIL.
- DATES FOR BOTTOM TWO LINES ON TS-4 SIGN SHALL BE DETERMINED BY THE ENGINEER AND PLACED AT LEAST ONE (1) WEEK PRIOR TO RAMP CLOSURES OR AS OTHERWISE DIRECTED BY THE ENGINEER.

MATCH LINE SEE SHEET 8 OF 8



FILE NAME	USER NAME - AUSER	DESIGNED PJO	REVISED -	<b>STATE OF ILLINOIS DEPARTMENT OF TRANSPORTATION</b>	<b>DETOUR PLAN FOR RAMP D CLOSURE (1 OF 2) EASTBOUND I-88 TO IL ROUTE 59</b>		F.A.P. RTE.	SECTION	COUNTY	TOTAL SHEETS	SHEET NO.		
FILE#		DRAWN KES	REVISED -		SCALE: N.T.S.	SHEET NO. 7 OF 6 SHEETS	STA.	TO STA.	338	(112 & 113) WRS-5	DUPAGE	963	93
		CHECKED JCM	REVISED -		CONTRACT NO. 60131								
		DATE 10/15/2012	REVISED -		ILLINOIS FED. AID PROJECT								