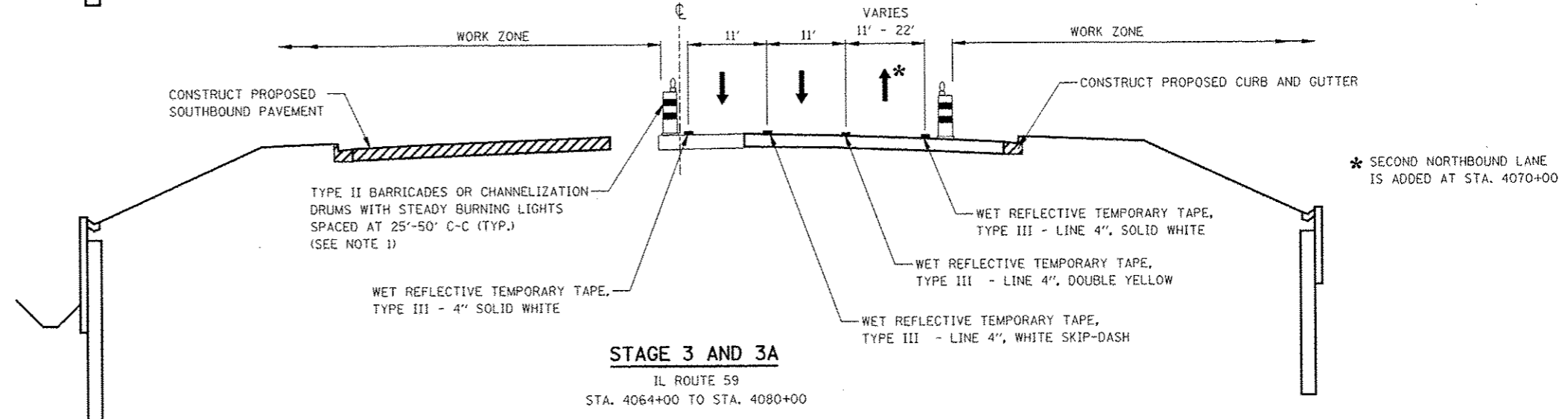
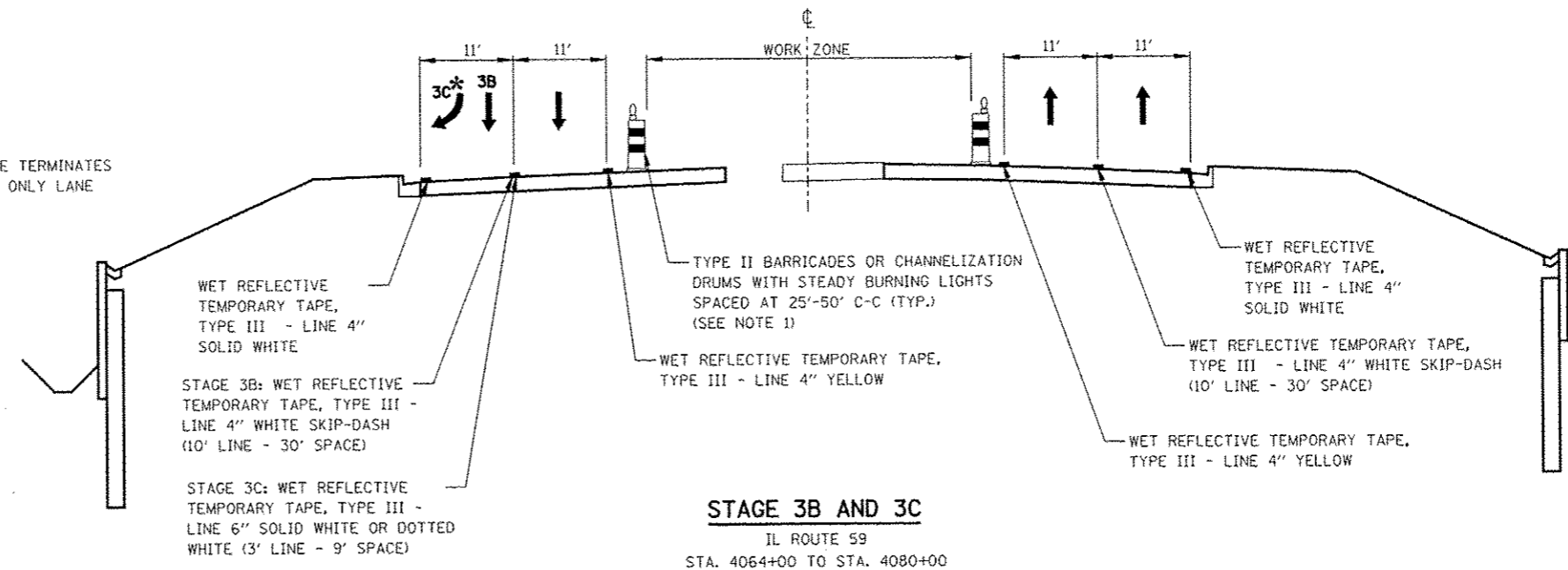


NOTES

1. PAVEMENT DROP-OFF SHALL NOT EXCEED 24 INCHES BEHIND TYPE II BARRICADES OR CHANNELIZATION DRUMS. TEMPORARY GRADING, IF REQUIRED TO REDUCE DROP-OFF HEIGHT, DURING CONSTRUCTION SHALL BE CONSIDERED INCLUDED IN THE COST FOR TRAFFIC CONTROL AND PROTECTION, (SPECIAL).
2. TEMPORARY CONCRETE BARRIER SHALL BE CONTINUOUSLY PINNED TO THE PAVEMENT. SEE MAINTENANCE OF TRAFFIC GENERAL NOTES.



* RIGHT THROUGH LANE TERMINATES INTO A RIGHT TURN ONLY LANE IN STAGE 3C



FILE NAME	USER NAME	DESIGNED	REVISED	STATE OF ILLINOIS DEPARTMENT OF TRANSPORTATION	MAINTENANCE OF TRAFFIC TYPICAL SECTIONS ILLINOIS ROUTE 59	F.A.P. RTE.	SECTION	COUNTY	TOTAL SHEETS	SHEET NO.	
#FILEL#		DRAWN	REVISED			338	(112 & 113) WRS-5	DUPAGE	963	107	
PLOT SCALE - ESCALE#		CHECKED	REVISED			SCALE: SHEET NO. 9 OF 17 SHEETS STA. 4064+00 TO STA. 4080+00					
PLOT DATE - EDAT#		DATE	REVISED			CONTRACT NO. 60131 ILLINOIS FED. AID PROJECT					