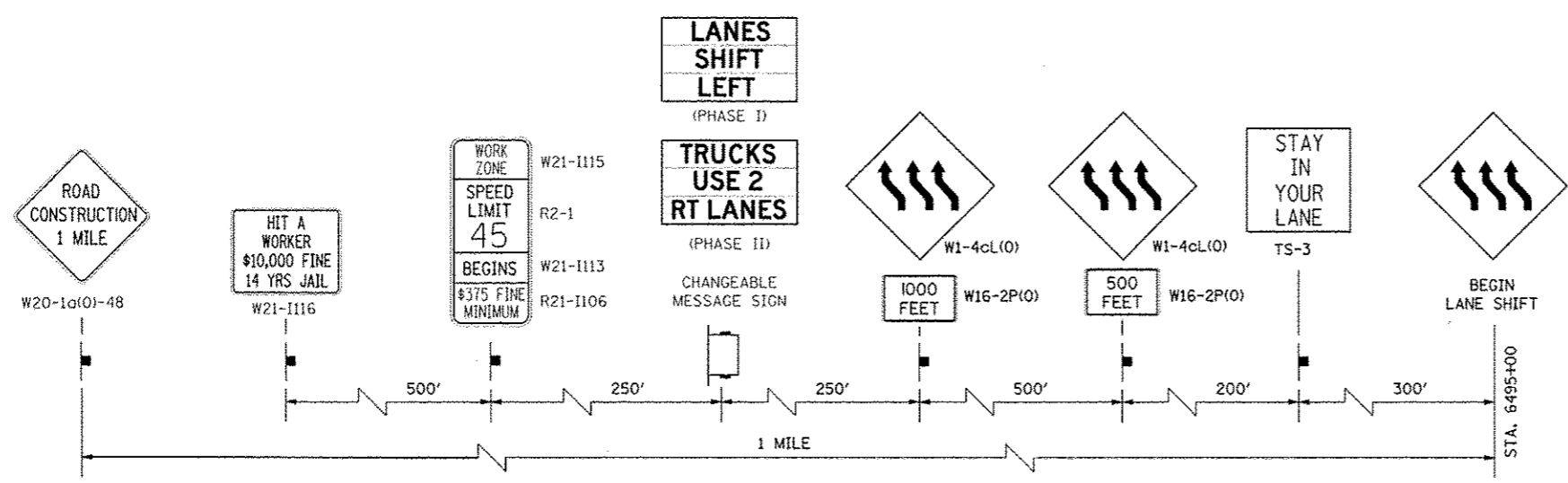


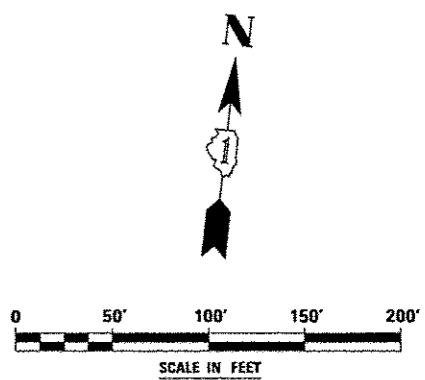
TOLLWAY TRAFFIC CONTROL

TRAFFIC CONTROL ON INTERSTATE 88 AND AT RAMP TERMINALS SHALL BE IN ACCORDANCE WITH THE FOLLOWING ILLINOIS TOLLWAY STANDARDS:

- E1 CONSTRUCTION SIGNS
- E2 LANE CLOSURE DETAILS
- E3 SHOULDER CLOSURE DETAILS
- E4 MAINTENANCE OF TRAFFIC REVERSE CURVE
- E5 TEMPORARY GORE DETAILS



ADVANCE WARNING SIGN SEQUENCE DETAIL
EASTBOUND



FILE NAME	USER NAME = BUSLER	DESIGNED PJO	REVISED -	STATE OF ILLINOIS DEPARTMENT OF TRANSPORTATION	MAINTENANCE OF TRAFFIC - STAGE 2 INTERSTATE 88	F.A.P. RTE.	SECTION	COUNTY	TOTAL SHEETS	SHEET NO.	
FILE#		DRAWN KES	REVISED -			338	(112 & 113) WRS-5		963	161	
PLT SCALE = 1"=500'		CHECKED JCM	REVISED -			SCALE: SHEET NO. 45 OF 118 SHEETS STA. 6488+50 TO STA. 6496+00		DUPAGE		CONTRACT NO. 60131	
PLT DATE = 10/15/2012		DATE 10/15/2012	REVISED -			ILLINOIS FED. AID PROJECT					