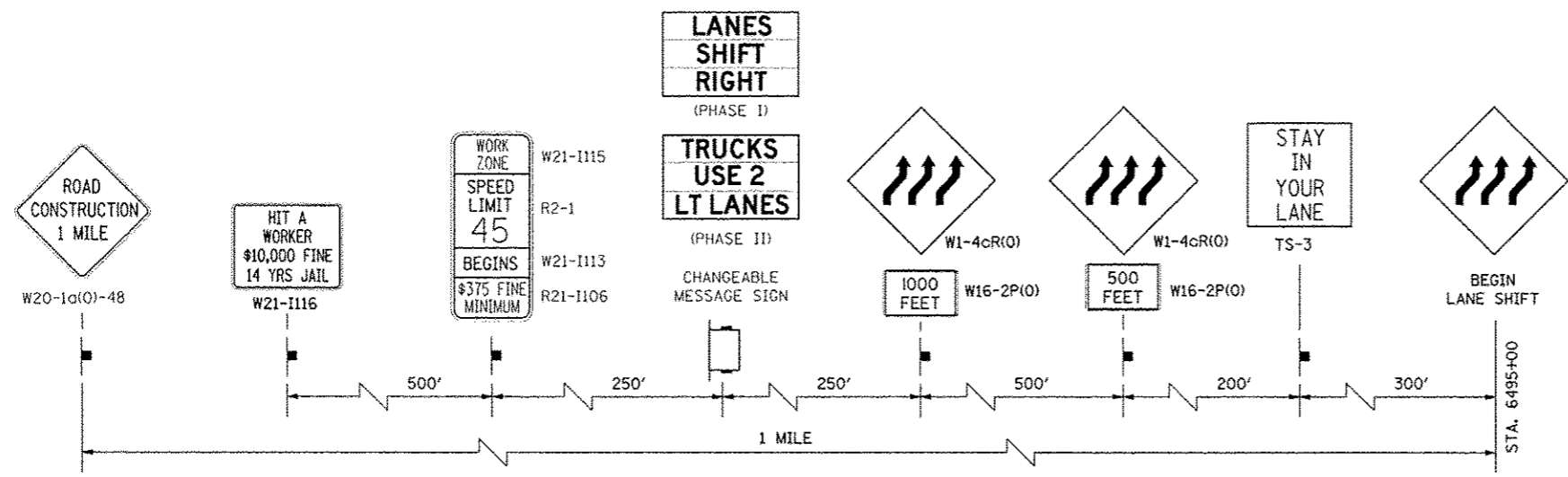


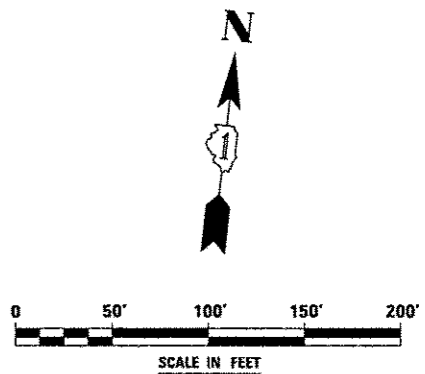
TOLLWAY TRAFFIC CONTROL

TRAFFIC CONTROL ON INTERSTATE 88 AND AT RAMP TERMINALS SHALL BE IN ACCORDANCE WITH THE FOLLOWING ILLINOIS TOLLWAY STANDARDS:

- E1 CONSTRUCTION SIGNS
- E2 LANE CLOSURE DETAILS
- E3 SHOULDER CLOSURE DETAILS
- E4 MAINTENANCE OF TRAFFIC REVERSE CURVE
- E5 TEMPORARY GORE DETAILS



**ADVANCE WARNING SIGN SEQUENCE DETAIL
EASTBOUND**



FILE NAME / #FILE#.P	USER NAME - #USER#.P	DESIGNED PJO	REVISED -	STATE OF ILLINOIS DEPARTMENT OF TRANSPORTATION	MAINTENANCE OF TRAFFIC - STAGE 3A INTERSTATE 88	F.A.P. RTE. 338	SECTION (112 & 113) WRS-5	COUNTY	TOTAL SHEETS 963	SHEET NO. 183	
		DRAWN RES	REVISED -			SCALE:	SHEET NO. 67 OF 118 SHEETS	STA. 6488+50 TO STA. 6496+00	ILLINOIS FED. AID PROJECT		
		CHECKED JCM	REVISED -						CONTRACT NO. 60131		
		DATE 10/15/2012	REVISED -						CONTRACT NO. 60131		