

**MOT PAVEMENT MARKING LEGEND**

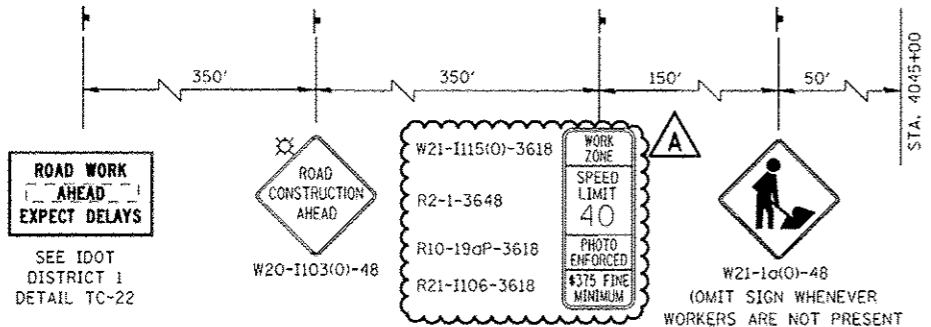
- (A) TEMPORARY PAVEMENT MARKING - LINE 4", SOLID WHITE
- (B) TEMPORARY PAVEMENT MARKING - LINE 4", WHITE SKIP-DASH (10' LINE - 30' SPACE)
- (C) TEMPORARY PAVEMENT MARKING - LINE 4", SOLID YELLOW
- (D) TEMPORARY PAVEMENT MARKING - LINE 4", DOUBLE YELLOW SPACED AT 11" C-C WITH TEMPORARY RAISED REFLECTIVE PAVEMENT MARKERS SPACED 40' C-C (BI-DIRECTIONAL AMBER)
- (E) TEMPORARY PAVEMENT MARKING - LINE 6", SOLID WHITE
- (F) TEMPORARY PAVEMENT MARKING - LINE 6", WHITE DOTTED (2' LINE - 6' SPACE) (UNLESS OTHERWISE NOTED)
- (G) TEMPORARY PAVEMENT MARKING - LINE 8", SOLID WHITE
- (H) TEMPORARY PAVEMENT MARKING - LINE 12", SOLID WHITE

- (I) TEMPORARY PAVEMENT MARKING - LINE 12", SOLID YELLOW
- (J) TEMPORARY PAVEMENT MARKING - LINE 24", SOLID WHITE
- (K) TEMPORARY PAVEMENT MARKING, LETTERS & SYMBOLS
- (L) WET REFLECTIVE TEMPORARY TAPE, TYPE III, 4", SOLID WHITE
- (M) WET REFLECTIVE TEMPORARY TAPE, TYPE III, 4", WHITE SKIP-DASH (10' LINE - 30' SPACE)
- (N) WET REFLECTIVE TEMPORARY TAPE, TYPE III, 4", SOLID YELLOW
- (O) WET REFLECTIVE TEMPORARY TAPE, TYPE III, 4", DOUBLE YELLOW SPACED AT 11" C-C WITH TEMPORARY RAISED REFLECTIVE PAVEMENT MARKERS SPACED 40' C-C (BI-DIRECTIONAL AMBER)
- (P) WET REFLECTIVE TEMPORARY TAPE, TYPE III, 6", SOLID WHITE
- (Q) WET REFLECTIVE TEMPORARY TAPE, TYPE III, 6", WHITE DOTTED (2' LINE - 6' SPACE) (UNLESS OTHERWISE NOTED)
- (R) WET REFLECTIVE TEMPORARY TAPE, TYPE III, 8", SOLID WHITE
- (S) WET REFLECTIVE TEMPORARY TAPE, TYPE III, 12", SOLID YELLOW
- (T) WET REFLECTIVE TEMPORARY TAPE, TYPE III, 24", SOLID WHITE
- (U) WET REFLECTIVE TEMPORARY TAPE, TYPE III, LETTERS & SYMBOLS

**ALIGNMENT LEGEND**  
 +39.5 INDICATES STATION MEASURED FROM SB BASELINE  
 +39.5 INDICATES STATION MEASURED FROM NB BASELINE

**LEGEND**

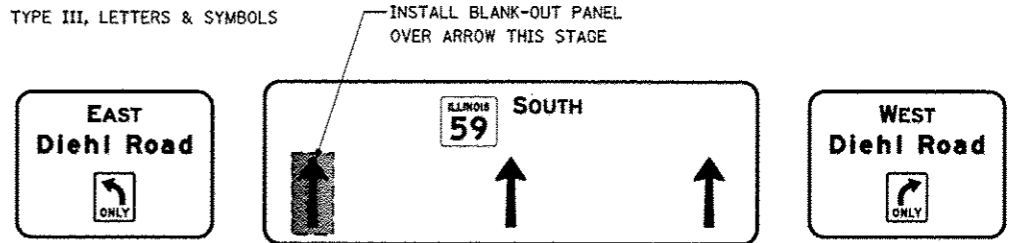
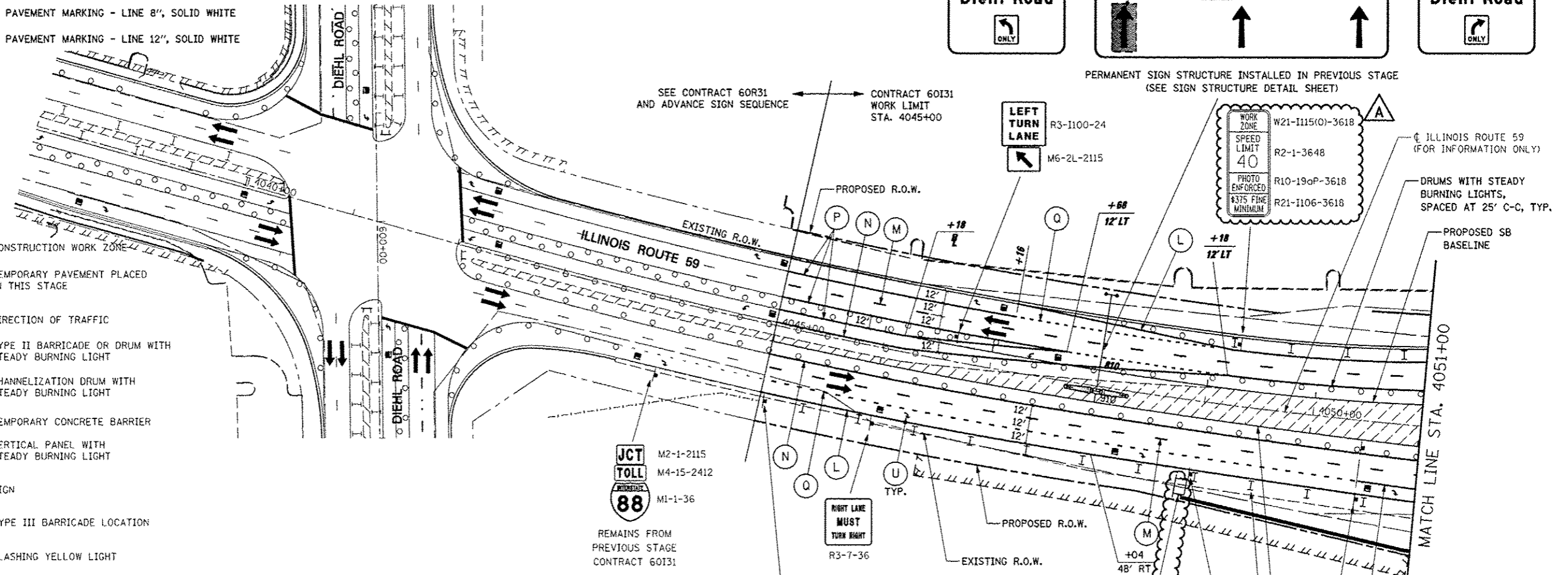
- CONSTRUCTION WORK ZONE
- TEMPORARY PAVEMENT PLACED IN THIS STAGE
- DIRECTION OF TRAFFIC
- TYPE II BARRICADE OR DRUM WITH STEADY BURNING LIGHT
- CHANNELIZATION DRUM WITH STEADY BURNING LIGHT
- TEMPORARY CONCRETE BARRIER
- VERTICAL PANEL WITH STEADY BURNING LIGHT
- SIGN
- TYPE III BARRICADE LOCATION
- FLASHING YELLOW LIGHT



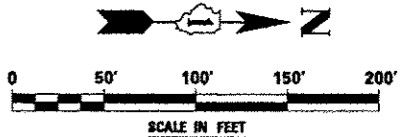
**ADVANCE SIGNING FOR NORTHBOUND IL ROUTE 59**  
 (SPACING MAY VARY DUE TO FIELD CONDITIONS)  
 COORDINATE WITH CONTRACT 60R31, SEE NOTE 1

**NOTES**

- ADVANCE SIGN LOCATIONS SHALL BE COORDINATED WITH ADJACENT CONTRACT. "ROAD CONSTRUCTION AHEAD" SIGN SHALL BE PLACED WHEN WARRANTED BY WORK ZONE CONDITIONS OR AS DIRECTED BY THE ENGINEER.
- ALL BLANK OUT PANELS AND TEMPORARY SIGN PANELS MOUNTED ON OVERHEAD SIGNS SHALL HAVE AN ORANGE BACKGROUND.
- LOCATION OF TRAILER MOUNTED SPEED INDICATOR SIGN SHALL BE COORDINATED WITH THE ENGINEER AND WILL BE MEASURED AND PAID FOR SEPARATELY UNDER SPEED INDICATOR SIGN.



PERMANENT SIGN STRUCTURE INSTALLED IN PREVIOUS STAGE (SEE SIGN STRUCTURE DETAIL SHEET)



FILE NAME: #FILE#	USER NAME: #USER#	DESIGNED: PJO	REVISED: - ADDENDUM A 12/17/2012	<b>STATE OF ILLINOIS DEPARTMENT OF TRANSPORTATION</b>	<b>MAINTENANCE OF TRAFFIC - STAGE 4 ILLINOIS ROUTE 59</b>	F.A.P. RTE.	SECTION	COUNTY	TOTAL SHEETS	SHEET NO.	
		DRAWN: KES	REVISED: -			338	(112 & 113) WRS-5	DUPAGE	963	219	
		CHECKED: JCM	REVISED: -			CONTRACT NO. 60I31					
		DATE: 10/15/2012	REVISED: -			ILLINOIS REG. AID PROJECT					