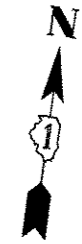
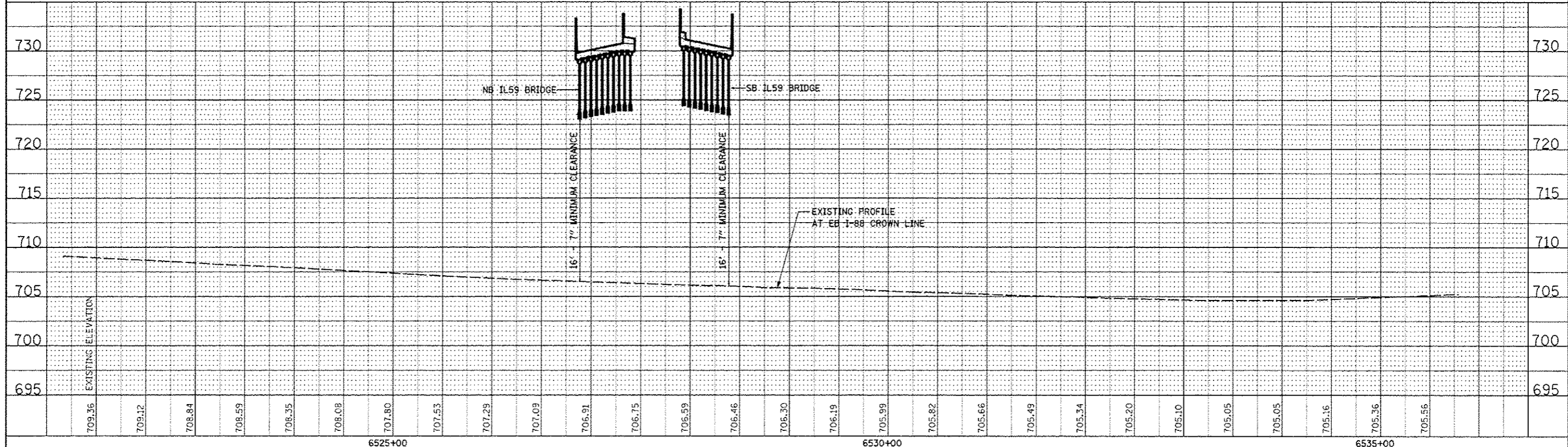
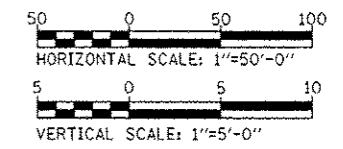
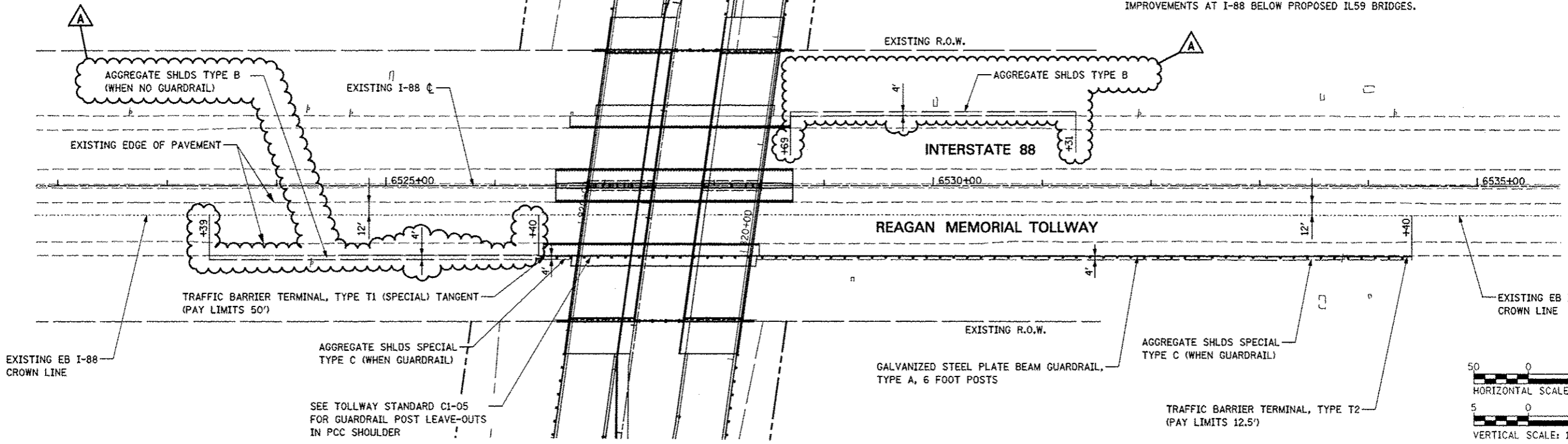


PLAN	DATE
BY	
REVISION	
NO. 1	
NO. 2	
NO. 3	
NO. 4	
NO. 5	
NO. 6	
NO. 7	
NO. 8	
NO. 9	
NO. 10	

PROFILE	DATE
BY	
REVISION	
NO. 1	
NO. 2	
NO. 3	
NO. 4	
NO. 5	
NO. 6	
NO. 7	
NO. 8	
NO. 9	
NO. 10	



NOTE:  
SEE GEOMETRIC LAY-OUT - I-88 SHEET FOR DETAILS OF IMPROVEMENTS AT I-88 BELOW PROPOSED IL59 BRIDGES.



FILE NAME:	USER NAME: *USER*	DESIGNED: PJO	REVISED: -ADDENDUM A 12/17/2012	<b>STATE OF ILLINOIS DEPARTMENT OF TRANSPORTATION</b>	<b>PLAN AND PROFILE - I-88 EB</b>	F.A.P. RTE.	SECTION	COUNTY	TOTAL SHEETS	SHEET NO.	
#FILE#		DRAWN: KES	REVISED: -			338	(112 & 113) WRS-5	DUPAGE	963	262	
		CHECKED: JCM	REVISED: -			CONTRACT NO. 60I31					
		DATE: 10/15/2012	REVISED: -			ILLINOIS FED. AID PROJECT					