

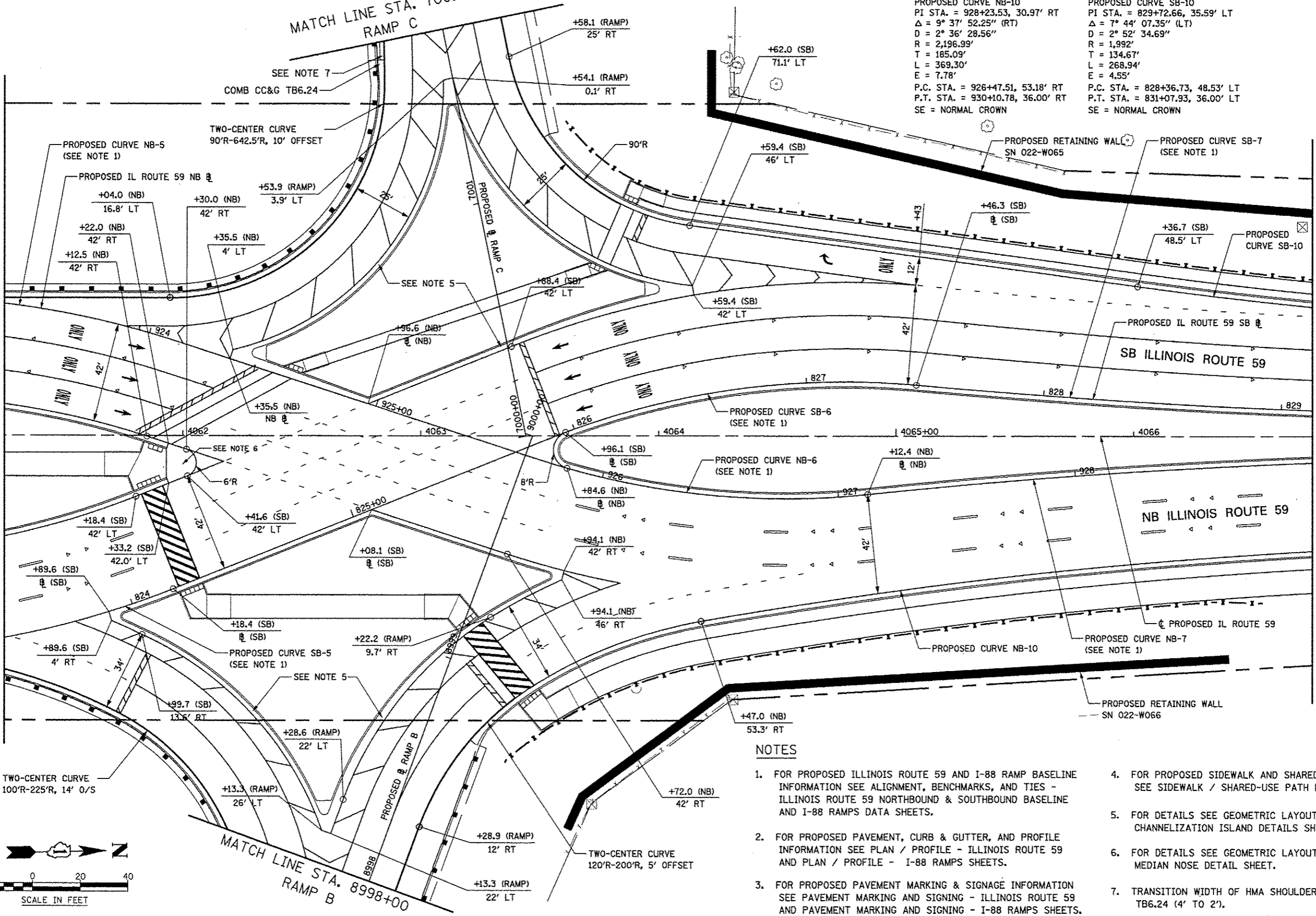
MATCH LINE STA. 7001+75
RAMP C

PROPOSED CURVE NB-10
PI STA. = 928+23.53, 30.97' RT
 $\Delta = 9^\circ 37' 52.25''$ (RT)
 $D = 2^\circ 36' 28.56''$
 $R = 2,196.99'$
 $T = 185.09'$
 $L = 369.30'$
 $E = 7.78'$
P.C. STA. = 926+47.51, 53.18' RT
P.T. STA. = 930+10.78, 36.00' RT
SE = NORMAL CROWN

PROPOSED CURVE SB-10
PI STA. = 829+72.66, 35.59' LT
 $\Delta = 7^\circ 44' 07.35''$ (LT)
 $D = 2^\circ 52' 34.69''$
 $R = 1,992'$
 $T = 134.67'$
 $L = 268.94'$
 $E = 4.55'$
P.C. STA. = 828+36.73, 48.53' LT
P.T. STA. = 831+07.93, 36.00' LT
SE = NORMAL CROWN

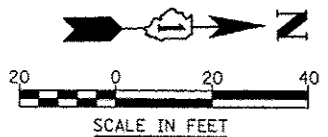
MATCH LINE STA. 4061+25

MATCH LINE STA. 4066+75



NOTES

1. FOR PROPOSED ILLINOIS ROUTE 59 AND I-88 RAMP BASELINE INFORMATION SEE ALIGNMENT, BENCHMARKS, AND TIES - ILLINOIS ROUTE 59 NORTHBOUND & SOUTHBOUND BASELINE AND I-88 RAMPS DATA SHEETS.
2. FOR PROPOSED PAVEMENT, CURB & GUTTER, AND PROFILE INFORMATION SEE PLAN / PROFILE - ILLINOIS ROUTE 59 AND PLAN / PROFILE - I-88 RAMPS SHEETS.
3. FOR PROPOSED PAVEMENT MARKING & SIGNAGE INFORMATION SEE PAVEMENT MARKING AND SIGNING - ILLINOIS ROUTE 59 AND PAVEMENT MARKING AND SIGNING - I-88 RAMPS SHEETS.
4. FOR PROPOSED SIDEWALK AND SHARED-USE PATH INFORMATION SEE SIDEWALK / SHARED-USE PATH PLANS.
5. FOR DETAILS SEE GEOMETRIC LAYOUT - ILLINOIS ROUTE 59 CHANNELIZATION ISLAND DETAILS SHEET.
6. FOR DETAILS SEE GEOMETRIC LAYOUT - ILLINOIS ROUTE 59 MEDIAN NOSE DETAIL SHEET.
7. TRANSITION WIDTH OF HMA SHOULDER TO MEET COMB CC&G TB6.24 (4' TO 2').



FILE NAME	USER NAME <#UGER#>	DESIGNED PJO	REVISED -	STATE OF ILLINOIS DEPARTMENT OF TRANSPORTATION	GEOMETRIC LAYOUT - ILLINOIS ROUTE 59	F.A.P. RTE.	SECTION	COUNTY	TOTAL SHEETS	SHEET NO.	
#FILE#	PLT SCALE = #SCALE#	DRAWN KES	REVISED -			338	(112 & 113) WRS-5	DUPAGE	963	266	
	PLT DATE = #DATE#	CHECKED JCM	REVISED -			SCALE: AS SHOWN SHEET NO. 4 OF 21 SHEETS STA. 4061+25 TO STA. 4066+75		CONTRACT NO. 60131		ILLINOIS/FED. AID PROJECT	
		DATE 10/15/2012	REVISED -								