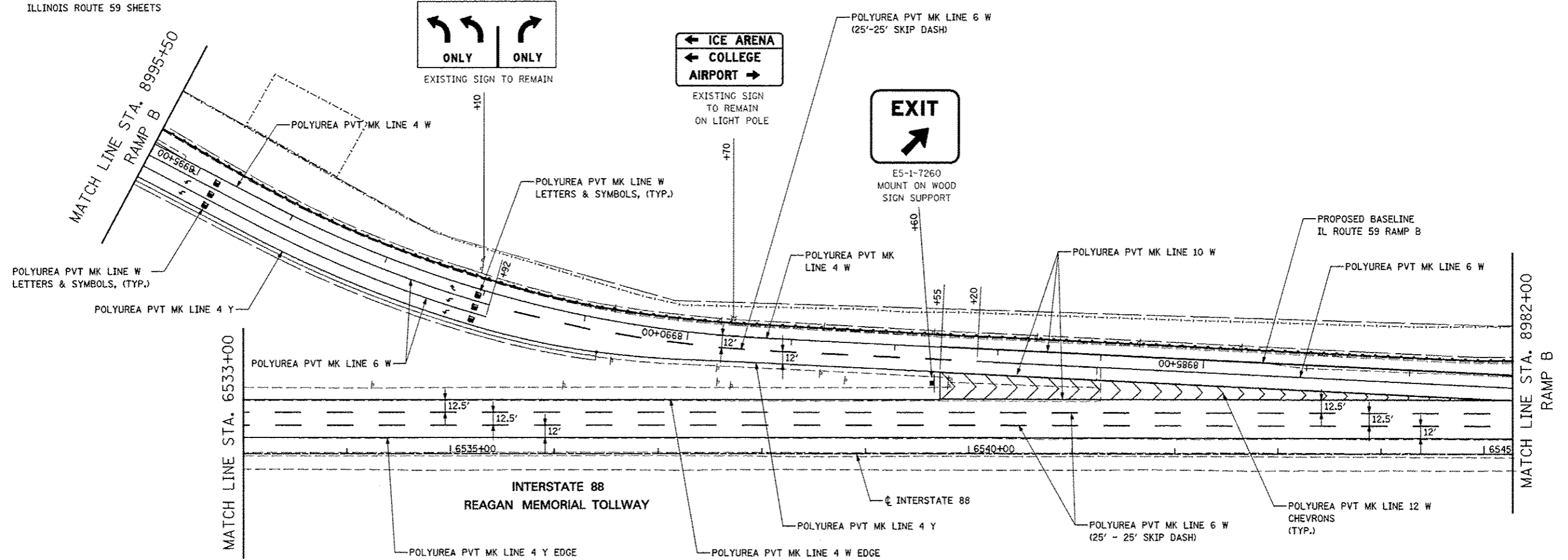


FOR CONTINUATION SEE
ILLINOIS ROUTE 59 SHEETS



FILE NAME: *FILEL*	USER NAME: *USER*	DESIGNED <i>PJO</i>	REVISED -	STATE OF ILLINOIS DEPARTMENT OF TRANSPORTATION	PAVEMENT MARKING AND SIGNING RAMP B / INTERSTATE 88	F.A.P. RTE.	SECTION	COUNTY	TOTAL SHEETS	SHEET NO.	
	PLOT SCALE: *SCALE*	DRAWN <i>KES</i>	REVISED -			338	(112 & 113) WRS-5	DUPAGE	963	395	
	PLOT DATE: *DATE*	CHECKED <i>JCM</i>	REVISED -			CONTRACT NO. 60131					
	DATE <i>10/15/2012</i>	DATE	REVISED -			ILLINOIS FED. AID PROJECT					
					SCALE:	SHEET NO. 17 OF 18 SHEETS		STA. 8982+00 TO STA. 6533+00			