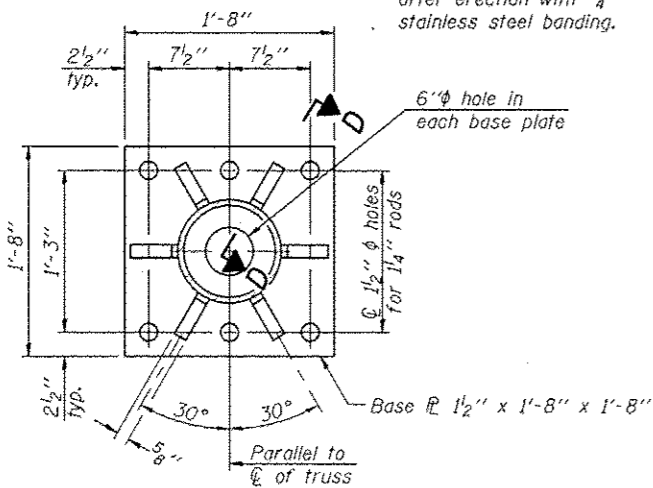


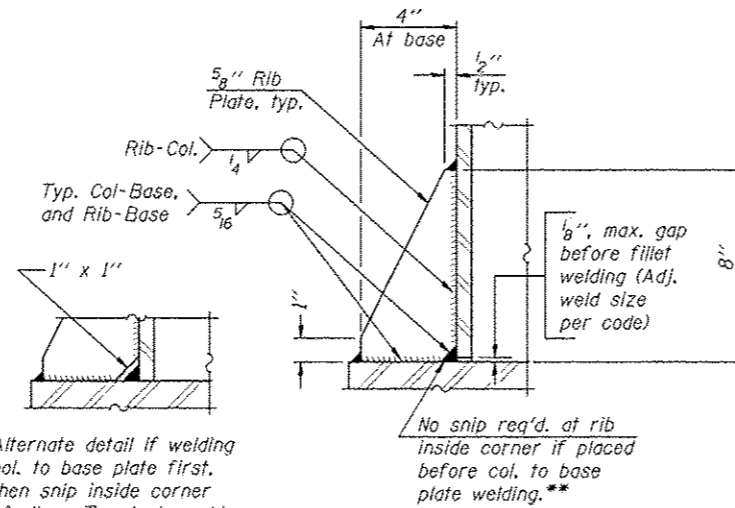
DETAIL B

Ribs shall be cut to fit slope of pipe.

Stainless Steel Standard Grade Wire Cloth, 3\"/>



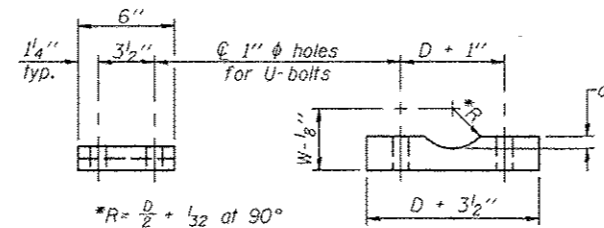
SECTION B-B



SECTION D-D

** Alternate detail if welding col. to base plate first, then snip inside corner of ribs. Terminate weld on rib 1/4\"/>

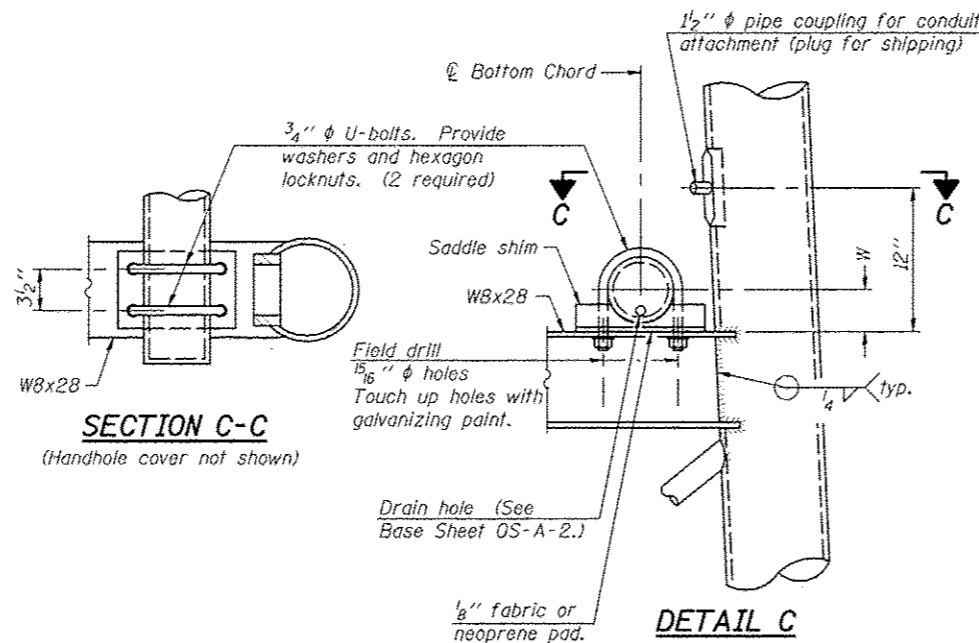
No snip req'd. at rib inside corner if placed before col. to base plate welding.



SADDLE SHIM DETAIL

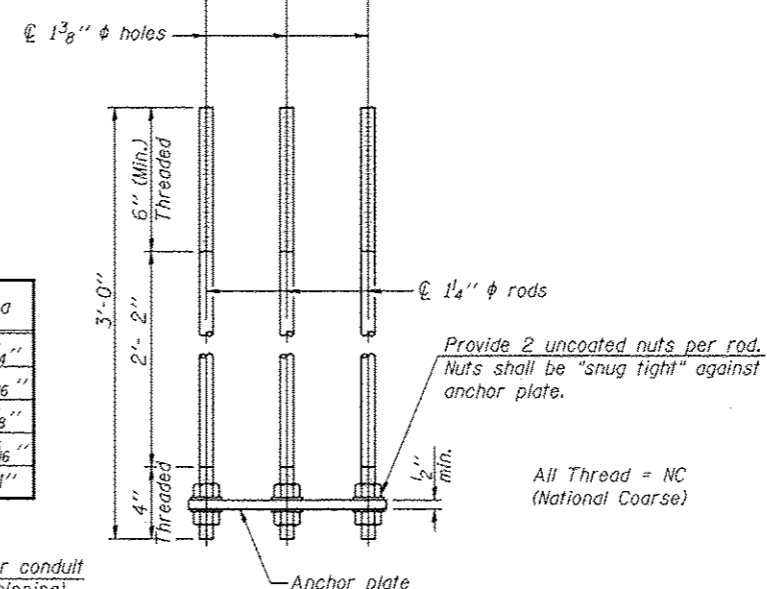
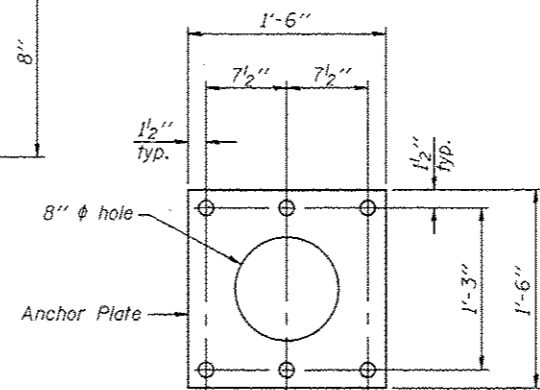
ASTM B26 Alloy 356-F
or
ASTM B209 Alloy 6061-T651
(4 required per sign truss)

Truss Chord Nominal Dia.	a
5"	3/4"
5 1/2"	13/16"
6"	7/8"
6 1/2"	15/16"
7"	1"

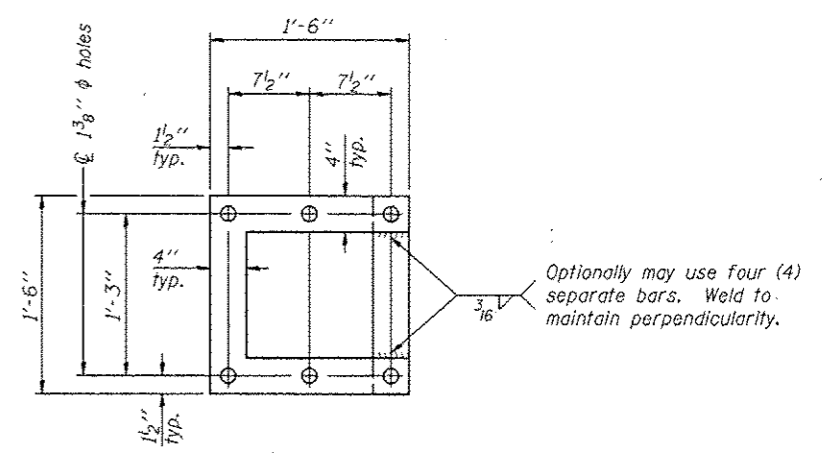


SECTION C-C
(Handhole cover not shown)

DETAIL C



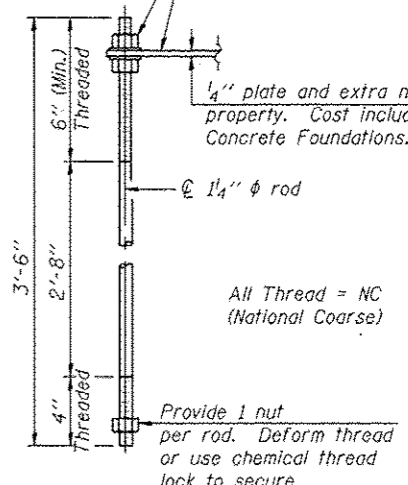
ANCHOR ROD DETAIL
Spread Footing Foundation



POSITIONING PLATE(S)

At each location, provide 1/4\"/>

1/4\"/>



ANCHOR ROD DETAIL
Drilled Shaft Foundation

Anchor rods shall conform to ASTM F1554 Grade 105. Galvanize upper 12\"/>

10\"/>

OS-A-6A

6-1-12

FILE NAME	USER NAME	DESIGNED	REVISED	STATE OF ILLINOIS DEPARTMENT OF TRANSPORTATION	OVERHEAD SIGN STRUCTURES SUPPORT FRAME DETAILS - ALUMINUM TRUSS	F.A.P. RTE.	SECTION	COUNTY	TOTAL SHEETS	SHEET NO.	
FILE NO.		DRAWN	REVISED			338	(112 & 113) WRS-5	DUPAGE	963	409	
PLT SCALE		CHECKED	REVISED			CONTRACT NO. 60131					
PLT DATE		DATE	REVISED			ILLINOIS FED. AID PROJECT					
				SCALE:	SHEET NO. 9 OF 15 SHEETS	STA.	TO STA.				