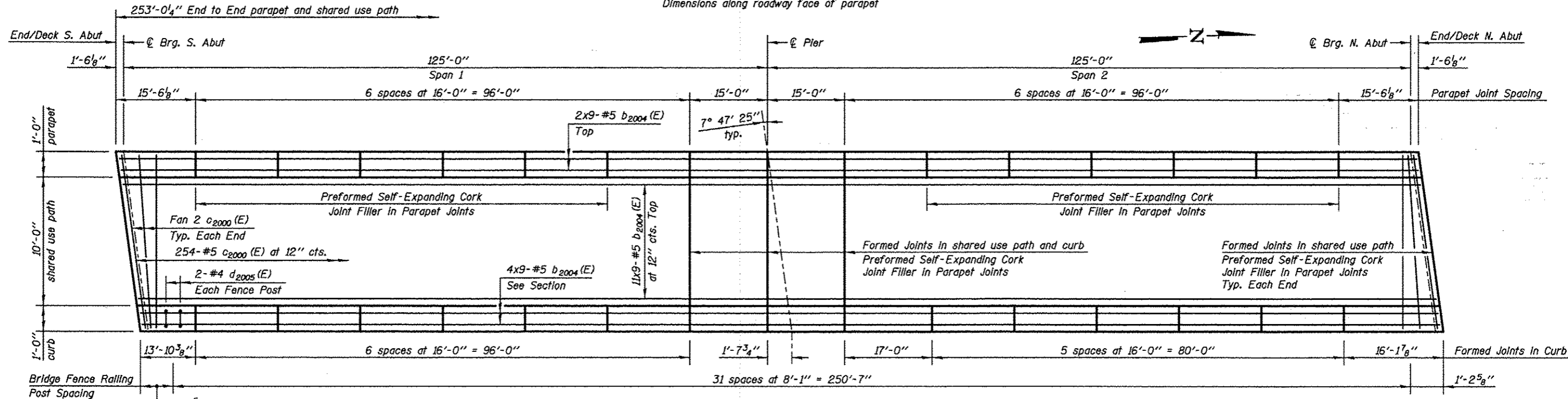
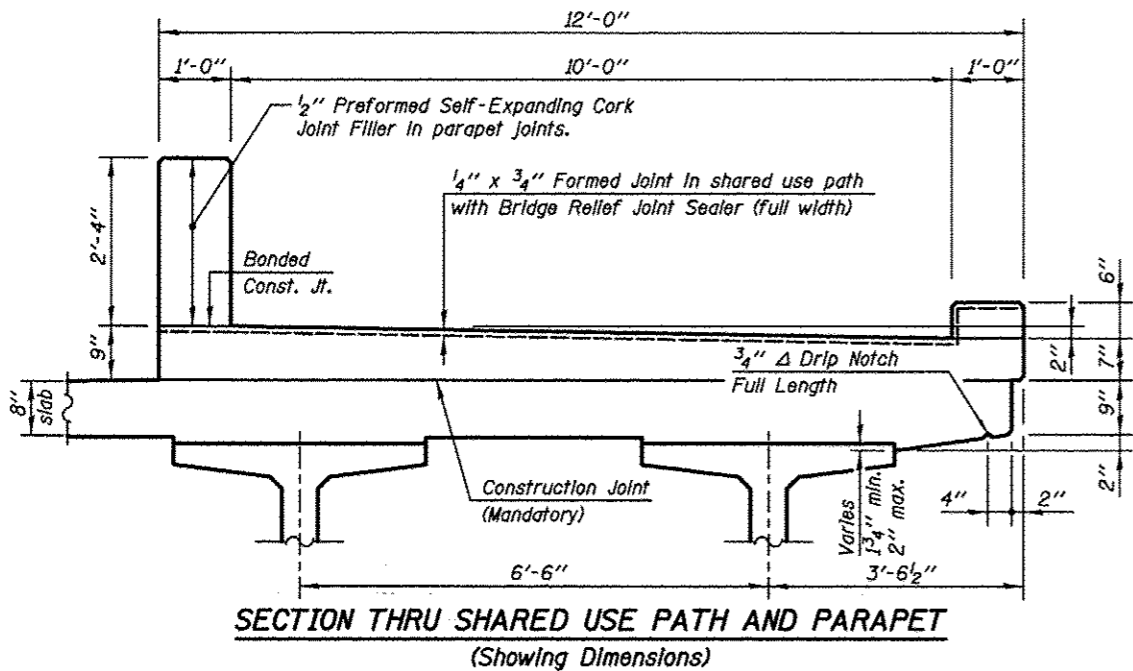


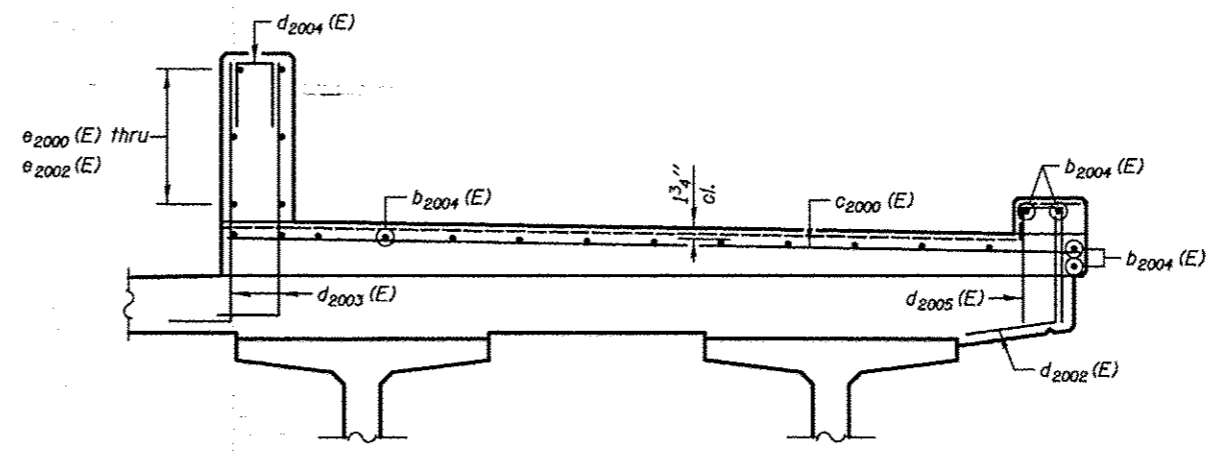
**INSIDE ELEVATION OF PARAPET**  
Dimensions along roadway face of parapet



**SHARED USE PATH - PARTIAL PLAN**



**SECTION THRU SHARED USE PATH AND PARAPET**  
(Showing Dimensions)



**SECTION THRU SHARED USE PATH AND PARAPET**  
(Showing Reinforcement Bars)

**Notes:**

- Bars indicated thus 20 x 3-#5 etc. indicates 20 lines of bars with 3 lengths per line.
- See Sheet SA-29 for Cork Filled Parapet Joint Detail
- See Sheet SA-29 for Deck Misc. Details and Bill of Materials.
- See Sheet SA-38 for Bridge Fence Railing, Sidewalk Mounted Details

**MIN. BAR LAPS:**  
#5 = 3'-3"

<b>KNIGHT</b> Engineers & Architects	DESIGNED - WPM	REVISIONS	STATE OF ILLINOIS DEPARTMENT OF TRANSPORTATION	SHARED USE PATH AND PARAPET DETAILS (NB) S.N. 022-2029 (SB) TOLLWAY B.N. 826 S.N. 022-2030 (NB) TOLLWAY B.N. 825 SHEET NO. SA-26 OF 63 SHEETS	F.A.P. RTE.	SECTION	COUNTY	TOTAL SHEETS	SHEET NO.
	SCALE - NONE	CHECKED - TB			338	(112 & 113) WRS-5	DUPAGE	963	610
DATE - 10/15/2012	DRAWN - TB	REVISIONS							
	CHECKED - WPM	REVISIONS							