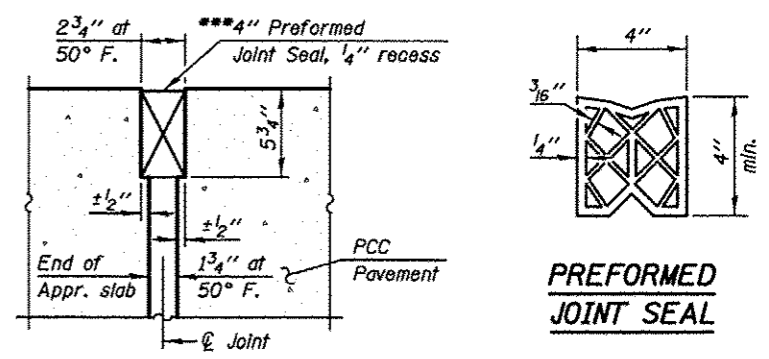


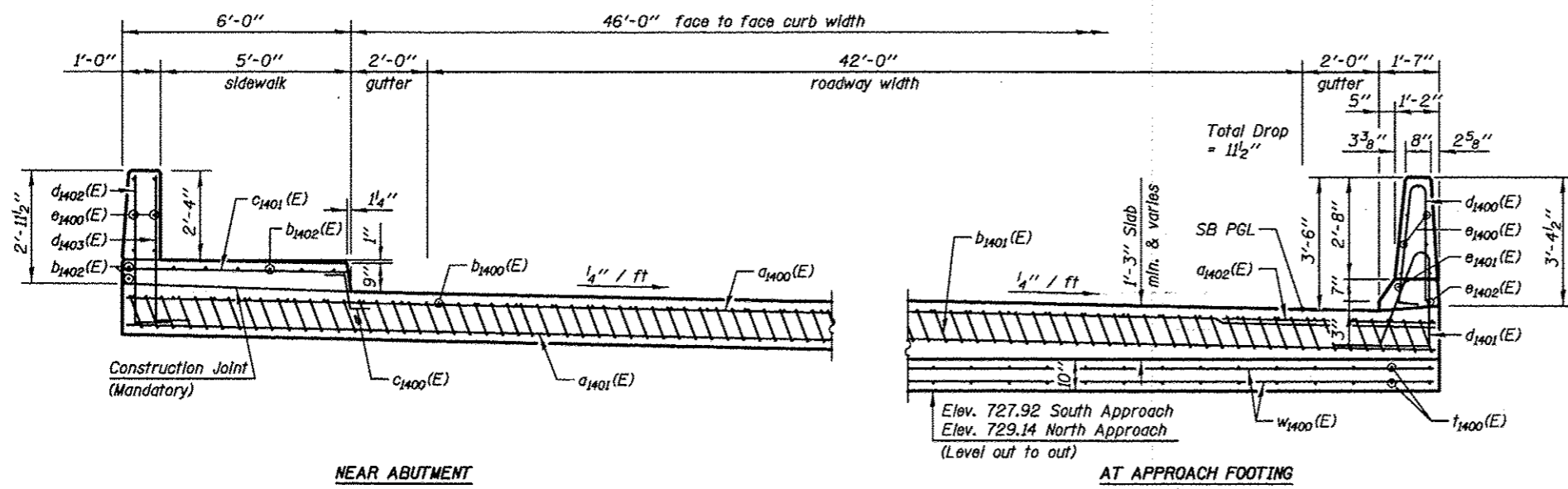
SECTION C-C



PREFORMED JOINT SEAL

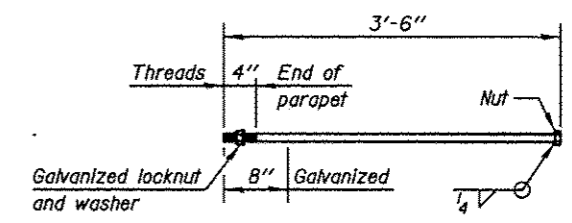
*Tilt #9 b1401(E) bars as required to maintain clearance.
 ***Cost Included with Concrete Superstructure.

DETAIL A

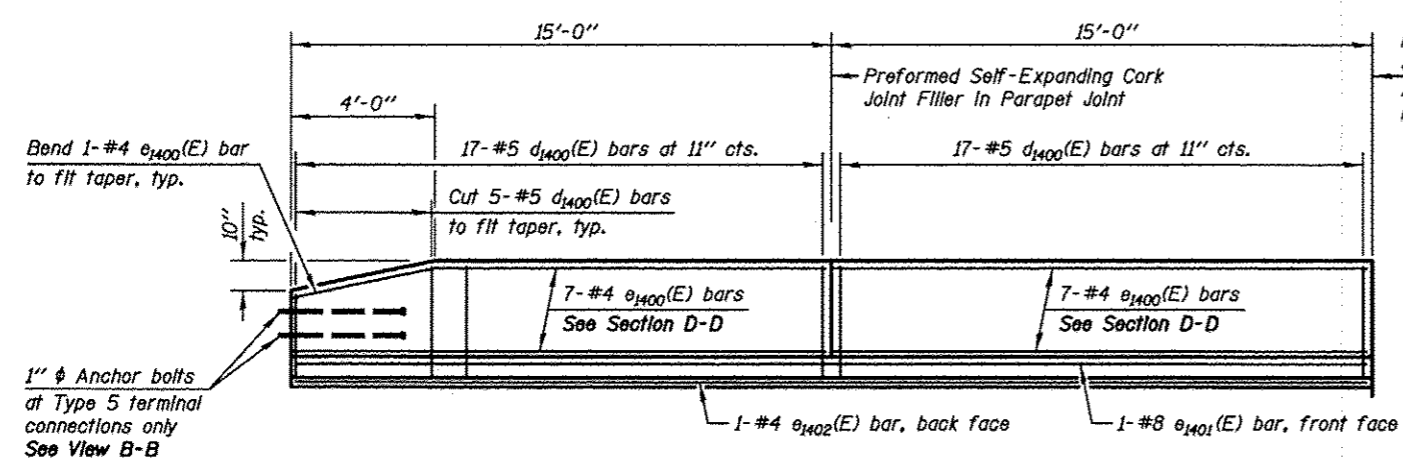


SECTION D-D

(See Plan for dimensions not shown)

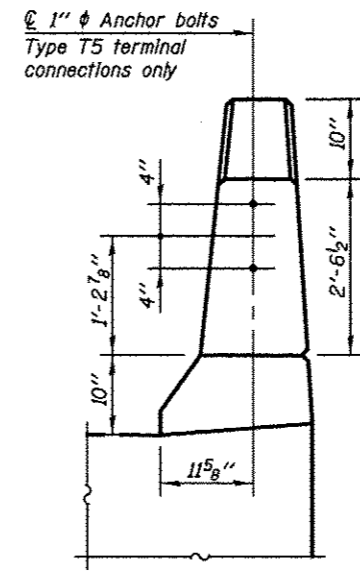


1" ANCHOR BOLT
 (Cost Included with Concrete Superstructure)



VIEW E-E

Dimensions along inside face of parapet
 North Approach parapet shown, South Approach parapet opposite hand



VIEW B-B

Notes:

- The approach footing maximum applied service bearing pressure (Q_{max}) = 2.0 ksf.
- See Sheet SA-24 for v1000(E) bar details
- See Sheet SA-55 for bar splicer details.
- See Sheet SA-03 for Granular Backfill for Structures and drainage treatment details.
- See Sheet SA-22 for Parapet Joint Details and additional parapet details.

KNIGHT
 Engineers & Architects

SCALE NONE
 DATE 10/15/2012

DESIGNED WPM
 CHECKED TB
 DRAWN TB
 CHECKED WPM

REVISED
 REVISED
 REVISED
 REVISED

STATE OF ILLINOIS
 DEPARTMENT OF TRANSPORTATION

BRIDGE APPROACH SLAB DETAILS (SB)
 S.N. 022-2029 (SB) TOLLWAY B.N. 826
 S.N. 022-2030 (NB) TOLLWAY B.N. 825
 SHEET NO. SA-31 OF 63 SHEETS

F.A.P. RTE.	SECTION	COUNTY	TOTAL SHEETS	SHEET NO.
338	(112 & 113) WRS-5	DUPAGE	963	615
CONTRACT NO. 60131			ILLINOIS FED. AID PROJECT	