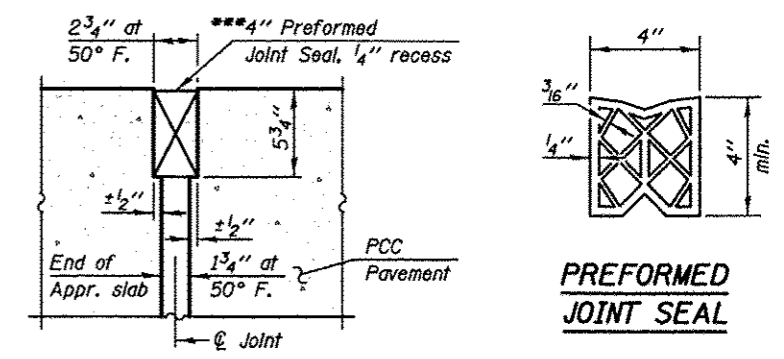
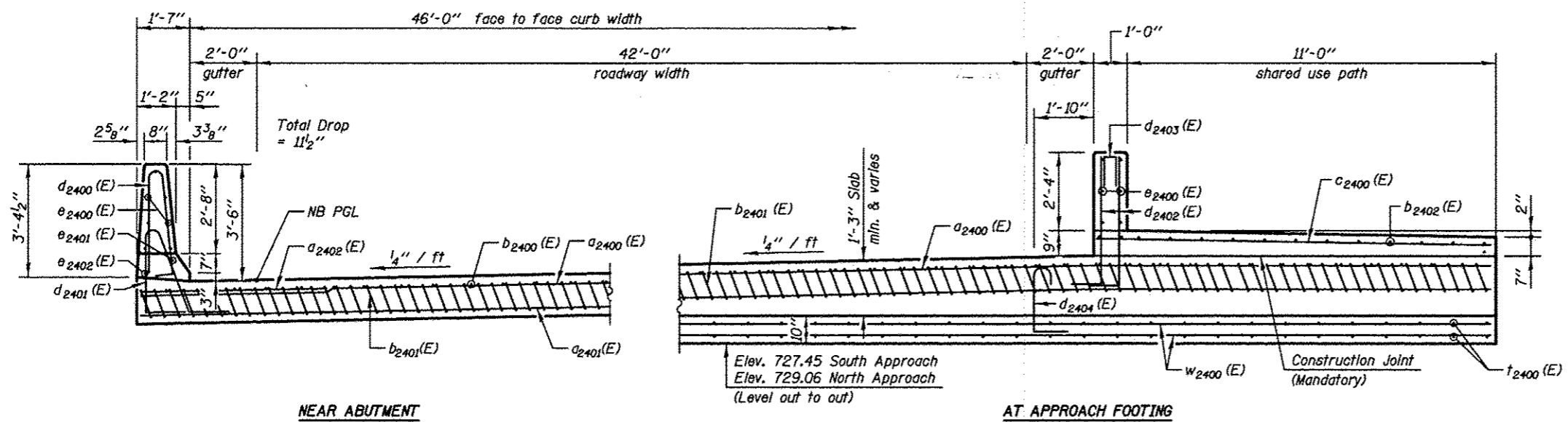


**SECTION C-C**

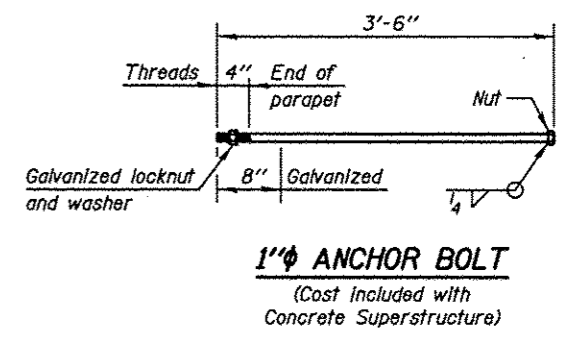


**DETAIL A**

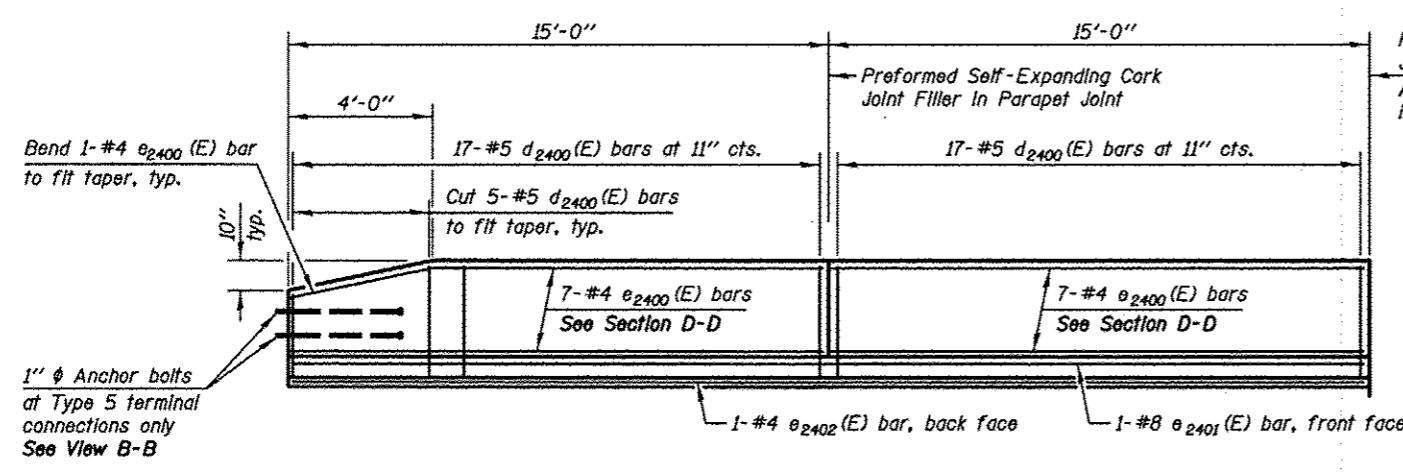
\*Tilt #9 b<sub>2401</sub>(E) bars as required to maintain clearance.  
 \*\*\*Cost Included with Concrete Superstructure.



**SECTION D-D**  
(See Plan for dimensions not shown)

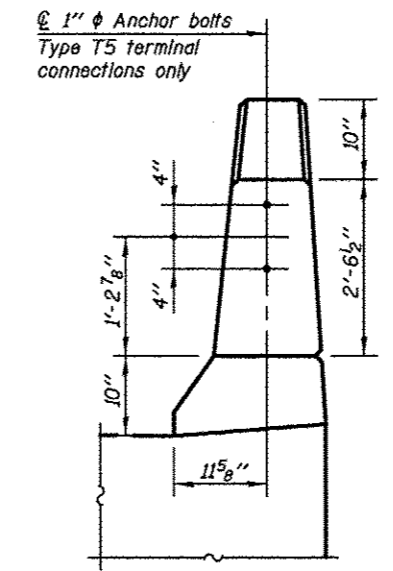


**1" ANCHOR BOLT**  
(Cost included with Concrete Superstructure)



**VIEW E-E**

Dimensions along inside face of parapet  
 South Approach parapet shown, North Approach parapet opposite hand



**VIEW B-B**

**Notes:**  
 The approach footing maximum applied service bearing pressure ( $Q_{max}$ ) = 2.0 ksf.  
 See Sheet SA-29 for v<sub>2000</sub>(E) bar details  
 See Sheet SA-55 for bar splicer details.  
 See Sheet SA-03 for Granular Backfill for Structures and drainage treatment details.  
 See Sheet SA-27 for Parapet Joint Details and additional parapet details.

<b>KNIGHT</b> Engineers & Architects	DESIGNED - WPM	REVISOR	<b>STATE OF ILLINOIS</b> <b>DEPARTMENT OF TRANSPORTATION</b>	<b>BRIDGE APPROACH SLAB DETAILS (NB)</b> S.N. 022-2029 (SB) TOLLWAY B.N. 826 S.N. 022-2030 (NB) TOLLWAY B.N. 825 SHEET NO. SA-34 OF 63 SHEETS	F.A.P. RTE.	SECTION	COUNTY	TOTAL SHEETS	SHEET NO.
	CHECKED - TB	REVISOR			338	(112 & 113) WRS-5	DUPAGE	963	618
SCALE - NONE	DRAWN - TB	REVISOR			CONTRACT NO. 60131				
DATE - 10/15/2012	CHECKED - WPM	REVISOR			ILLINOIS FED. AID PROJECT				