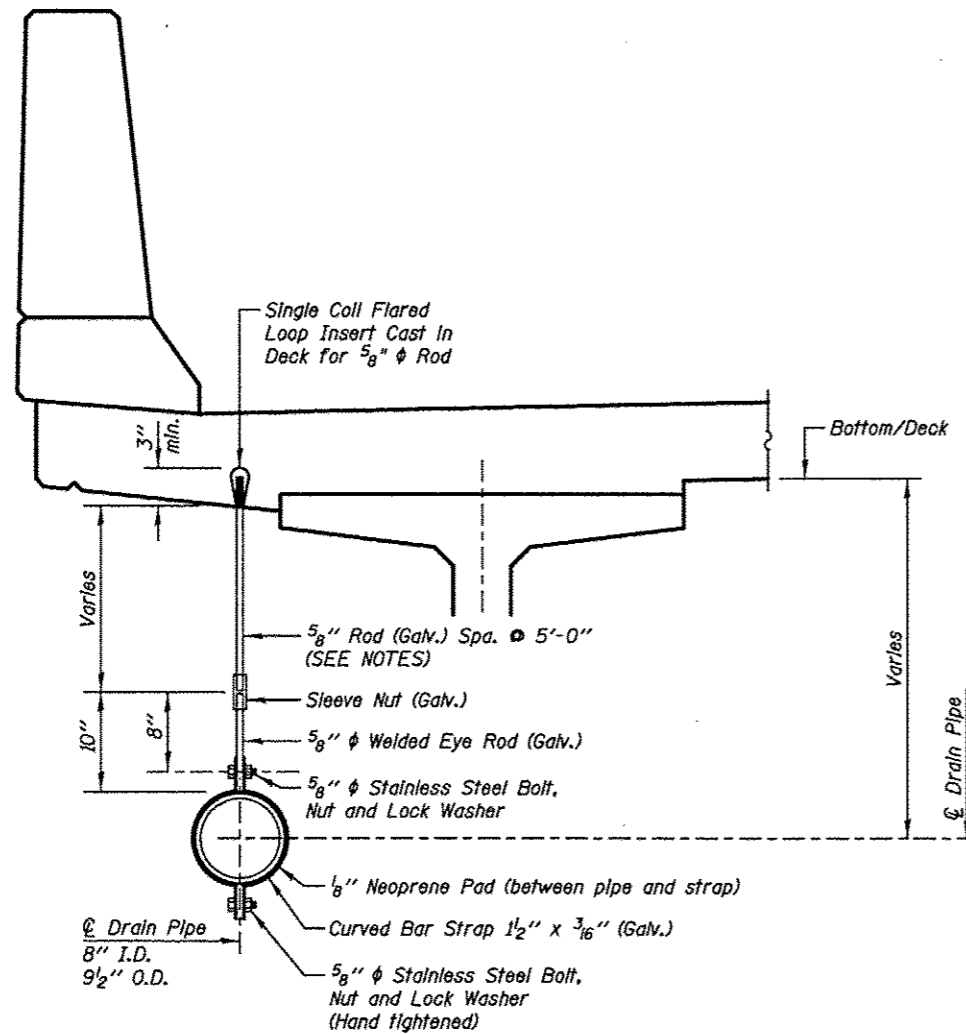


**DECK DRAINAGE SYSTEM**

SB Bridge shown (Drainage System, No. 1)  
 NB Bridge opposite hand (Drainage System, No. 2)



**LONGITUDINAL PIPE  
 SUPPORT DETAIL**

**NOTES**

See Sheet SA-20 and SA-25 for Drainage Scupper spacing.

All Pipe Hangers, Supports and Hardware shall be hot-dipped galvanized in accordance with AASHTO M232 (ASTM A153). All bolts, nuts and washers shall be stainless steel.

Pipe hangers shall be provided on all horizontal pipes at each tee, elbow or change in direction and at intermediate points as specified by the manufacturer, but not to exceed 5'-0" on centers. Pipe hangers shall have a load capacity of not less than 500 lbs.

The Deck Drainage System for the SB Bridge (022-2029) will be paid for as Drainage System, No. 1.

The Deck Drainage System for the NB Bridge (022-2030) will be paid for as Drainage System, No. 2.

**BILL OF MATERIAL**

Item	Unit	Quantity
Drainage System, No. 1	Each	1
Drainage System, No. 2	Each	1

**KNIGHT**  
 Engineers & Architects

SCALE NONE  
 DATE 10/15/2012

DESIGNED - WPM  
 CHECKED - TB  
 DRAWN - TB  
 CHECKED - WPM

REVISED  
 REVISED  
 REVISED  
 REVISED

STATE OF ILLINOIS  
 DEPARTMENT OF TRANSPORTATION

DECK DRAINAGE SYSTEM  
 S.N. 022-2029 (SB) TOLLWAY B.N. 826  
 S.N. 022-2030 (NB) TOLLWAY B.N. 825  
 SHEET NO. SA-37 OF 63 SHEETS

F.A.P. RTE.	SECTION	COUNTY	TOTAL SHEETS	SHEET NO.
338	(112 & 113) WRS-5	DUPAGE	963	621
				CONTRACT NO. 60131
ILLINOIS FED. AID PROJECT				