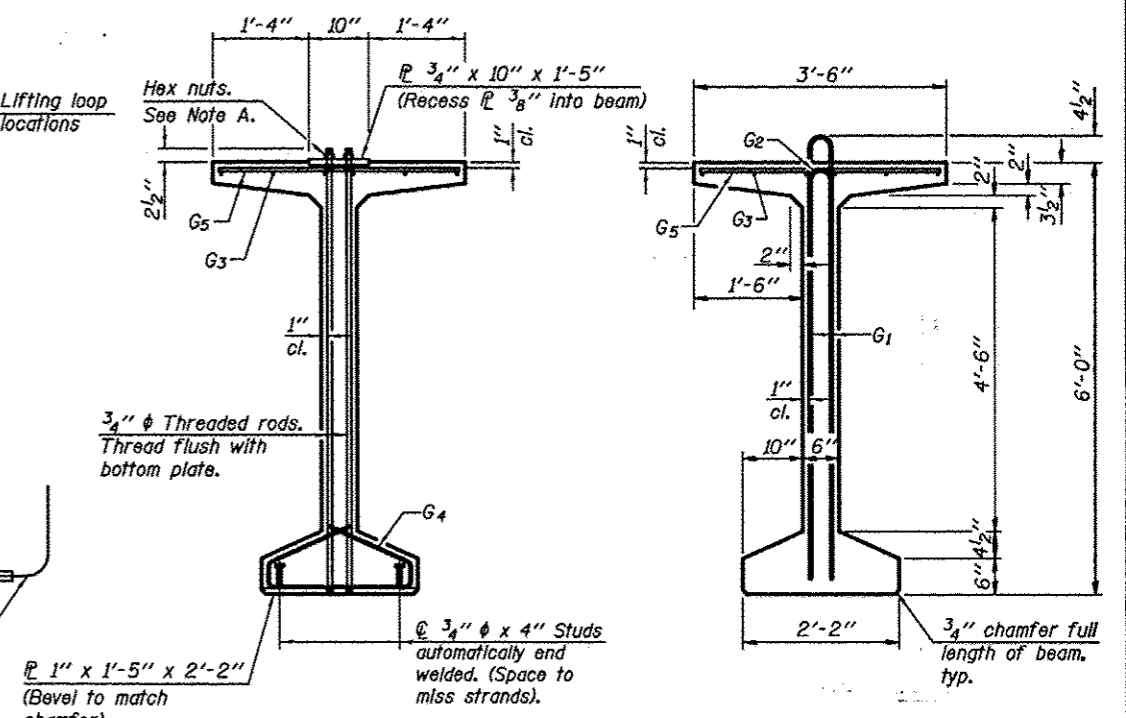


**ELEVATION OF BEAM**  
(Showing reinforcement & dimensions)

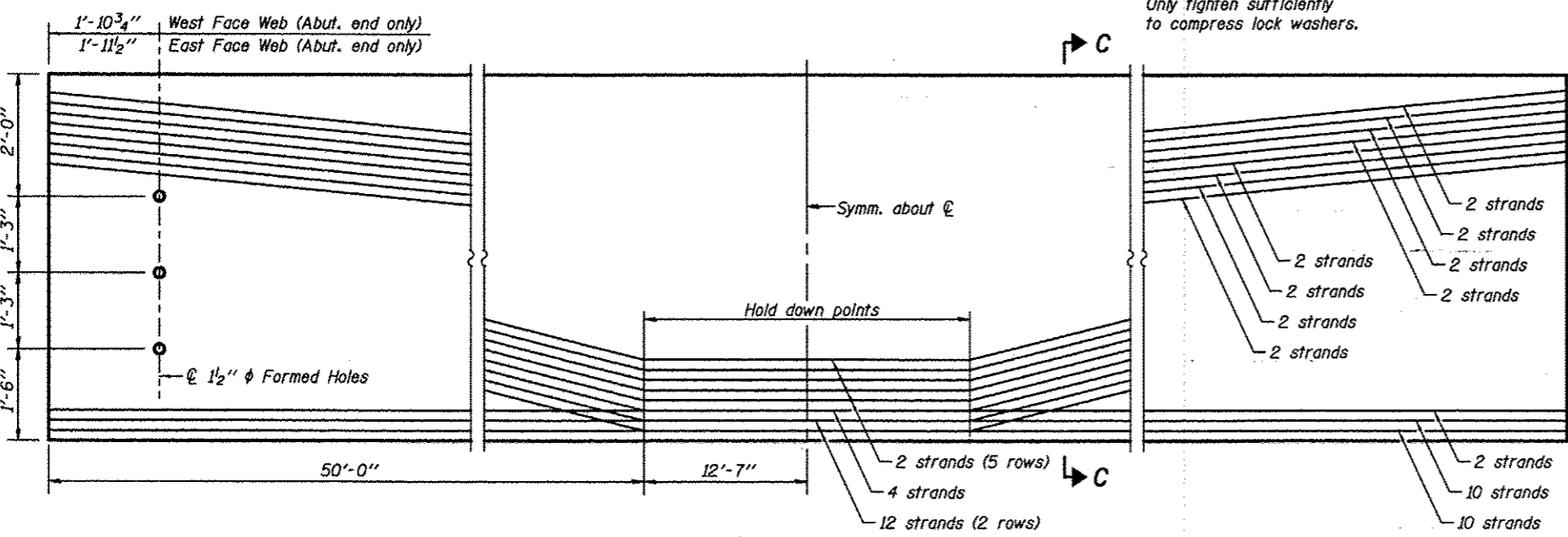


**SECTION A-A**

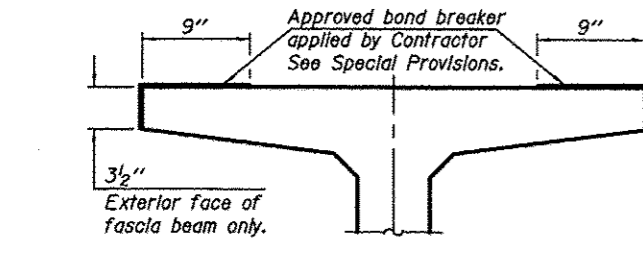
**SECTION B-B**

Note A:  
Hex nuts (top and bottom) with lock washers (top). Only tighten sufficiently to compress lock washers.

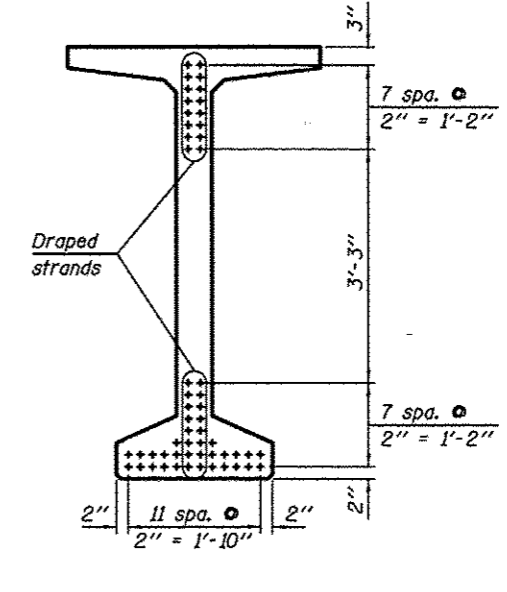
\* 4 spaces at 3 1/4" = 1'-1"  
\*\* 5-3/4" φ threaded dowel rods at 3 1/4" cts., each face.



**ELEVATION OF BEAM**  
(Showing prestressing steel)



**SECTION THRU TOP FLANGE**  
(Showing limits of bond breaker)



**SECTION C-C**

**\*\*\*BAR LIST  
ONE BEAM ONLY**

Bar	No.	Size	Length	Shape
G1	132	#4	13'-5"	⌒
G2	20	#4	11'-8"	⌒
G3	30	#6	27'-3"	⌒
G4	56	#3	4'-11"	⌒
G5	167	#5	3'-4"	⌒
G6	3	#8	6'-6"	⌒

\*\*\*For Information only

Notes:  
See sheet SA-43 for additional details and Bill of Material.

Required release strength, f'cl, shall be 5200 psi.

Apply approved bond breaker as shown in Section thru Top Flange full length of beam. See Special Provisions.

PBT-4-72

4-16-12

**KNIGHT**  
Engineers & Architects

SCALE NONE  
DATE 10/15/2012

DESIGNED - WPM  
CHECKED - TB  
DRAWN - TB  
CHECKED - WPM

REVISED  
REVISED  
REVISED  
REVISED

STATE OF ILLINOIS  
DEPARTMENT OF TRANSPORTATION

72" PPC BULB T-BEAM  
S.N. 022-2029 (SB) TOLLWAY B.N. 826  
S.N. 022-2030 (NB) TOLLWAY B.N. 825  
SHEET NO. SA-42 OF 63 SHEETS

F.A.P. RTE.	SECTION	COUNTY	TOTAL SHEETS	SHEET NO.
338	(112 & 113) WRS-5	DUPAGE	963	626
			CONTRACT NO. 60131	
ILLINOIS FED. AID PROJECT				