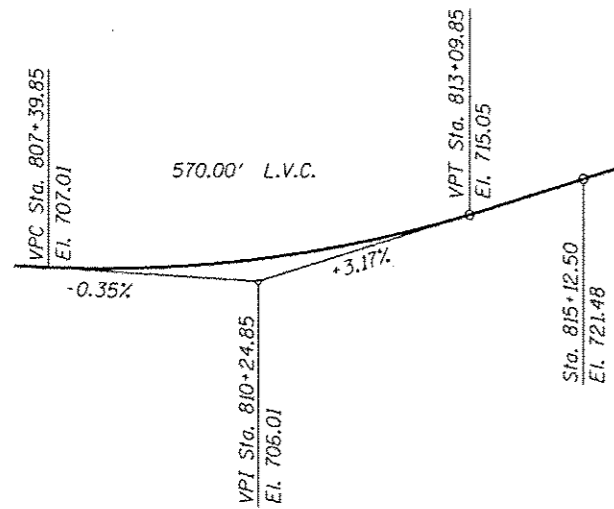
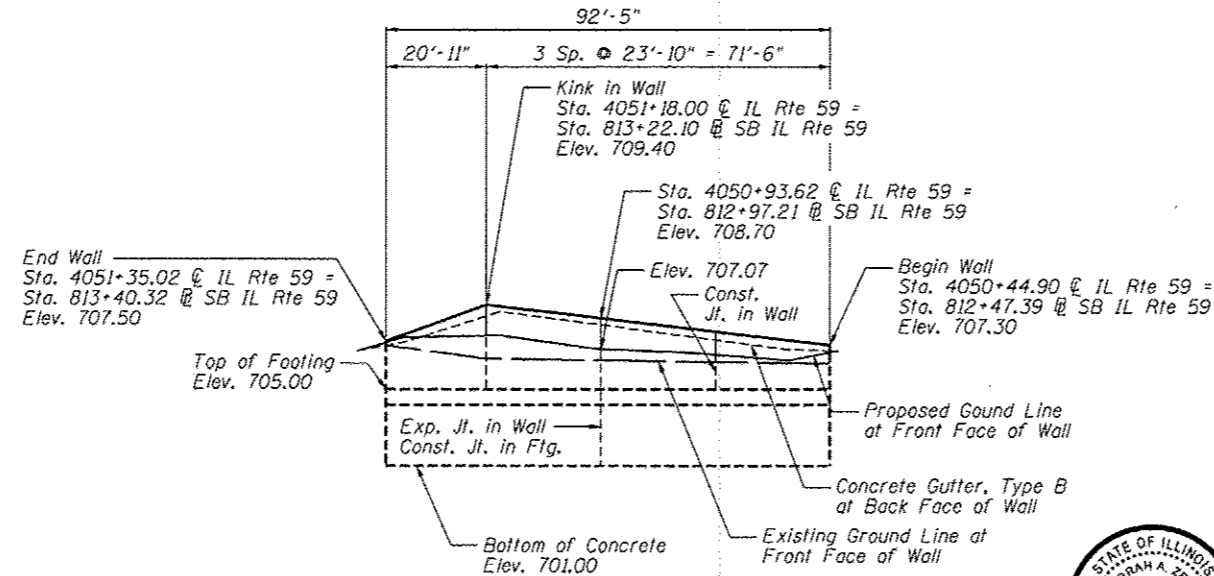


Bench Mark: DuPage County survey disk at north end of the west bridge wall, IL Rte 59 over Interstate Route 88, Elev. 731.43

Existing Structure: None



PROFILE GRADE
(along SB IL Route 59)



ELEVATION



Signature: *Deborah A. Zroka* Date: Oct. 18, 2012
November 30, 2014
Explos

GENERAL NOTES

1. Reinforcement bars designated (E) shall be epoxy coated.
2. Concrete sealer shall be applied to exposed surfaces of the front and back face and top of wall.

TOTAL BILL OF MATERIAL

ITEM	UNIT	TOTAL
Structure Excavation	Cu. Yd.	123
Concrete Structures	Cu. Yd.	24.4
Concrete Sealer	Sq. Ft.	258
Reinforcement Bars, Epoxy Coated	Pound	1,880
Granular Backfill for Structures	Cu. Yd.	31

INDEX OF SHEETS

- SB-1. General Plan
- SB-2. Wall Plan and Elevation
- SB-3. Wall Section and Details
- SB-4. Soil Boring Logs

DESIGN SPECIFICATIONS

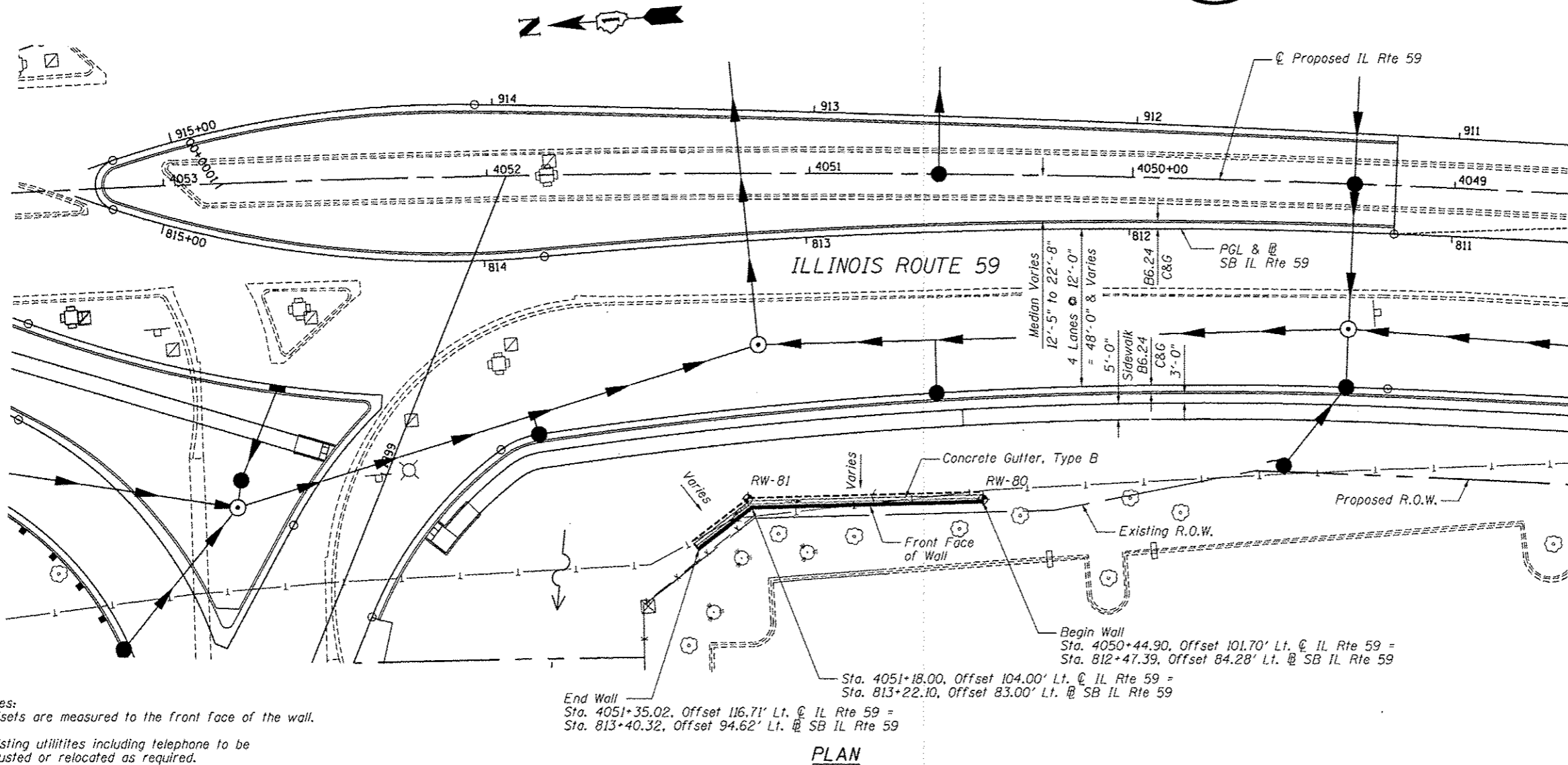
2012 AASHTO LRFD Bridge Design Specifications 6th Edition with 2012 Interims

DESIGN STRESSES

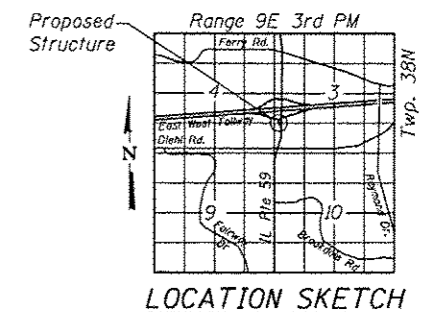
FIELD UNITS
 $f'_c = 3,500$ psi
 $f_y = 60,000$ psi (reinforcement)

HORIZONTAL CURVE DATA

Proposed Curve PRIL59-8
 PI Sta. = 4048+25.34
 $\Delta = 14^\circ 25' 49''$ (LT)
 $D = 1^\circ 14' 59''$
 $R = 4,584.55'$
 $T = 580.39'$
 $L = 1,154.64'$
 $E = 36.59'$
 P.C. Sta. = 4042+44.95
 P.T. Sta. = 4053+99.58



PLAN



LOCATION SKETCH

GENERAL PLAN
IL RTE 59 FAP RTE 338
SECTION (112 & 113) WRS-5
DUPAGE COUNTY
STA. 4050+44.90 TO STA. 4051+35.02
SN 022-W063

Notes:
 Offsets are measured to the front face of the wall.
 Existing utilities including telephone to be adjusted or relocated as required.



USER NAME = SAW	DESIGNED - LAS	REVISIONS
PLLOT SCALE = 40.00' / IN.	CHECKED - DAZ	REVISIONS
PLLOT DATE = 10/10/2012	DRAWN - SAW	REVISIONS
	CHECKED - JLA	REVISIONS

STATE OF ILLINOIS
 DEPARTMENT OF TRANSPORTATION

GENERAL PLAN
 STRUCTURE NUMBER 022-W063

SHEET NO. SB-1 OF SB-4 SHEETS

F.A.P. RTE.	SECTION	COUNTY	TOTAL SHEETS	SHEET NO.
338/IL 59	(112 & 113) WRS-5	DUPAGE	963	648
CONTRACT NO. 60131				

ILLINOIS FED. AID PROJECT