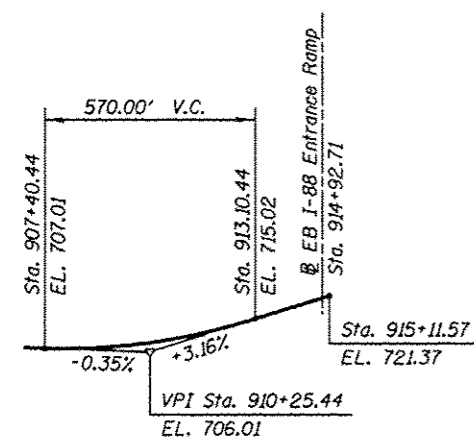
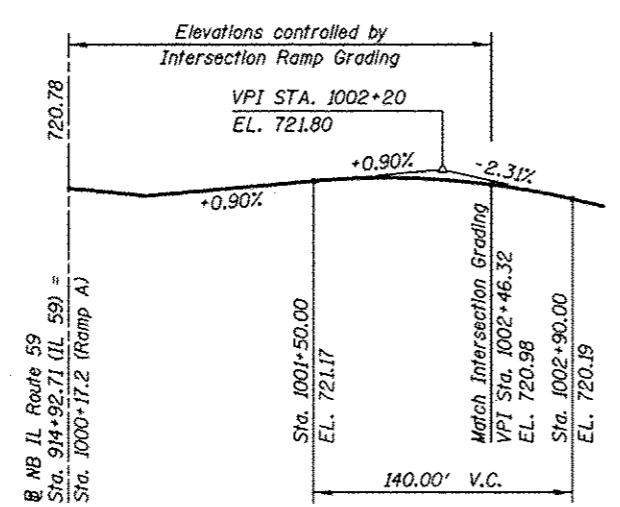


NOTE
Granular Backfill for Structures shall be compacted

TYPICAL WALL SECTION
(For Details See Sheet SC-06)



NB IL ROUTE 59 - PROPOSED PROFILE GRADE LINE

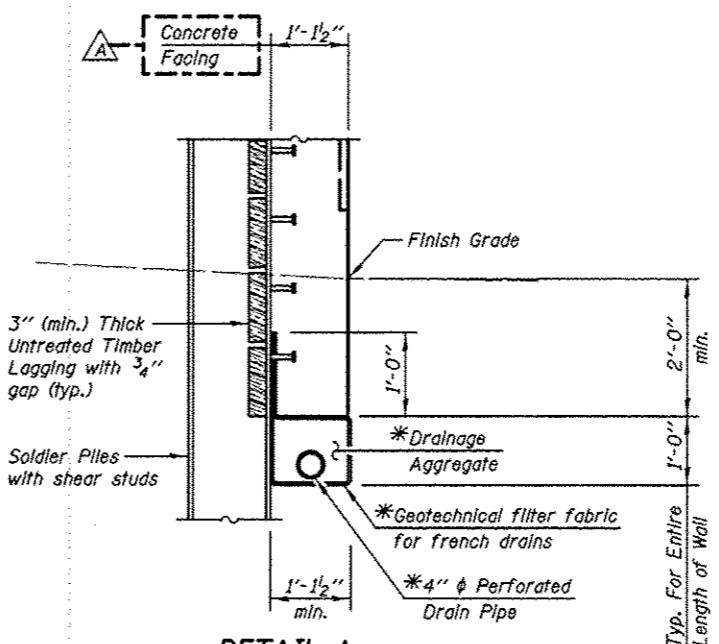
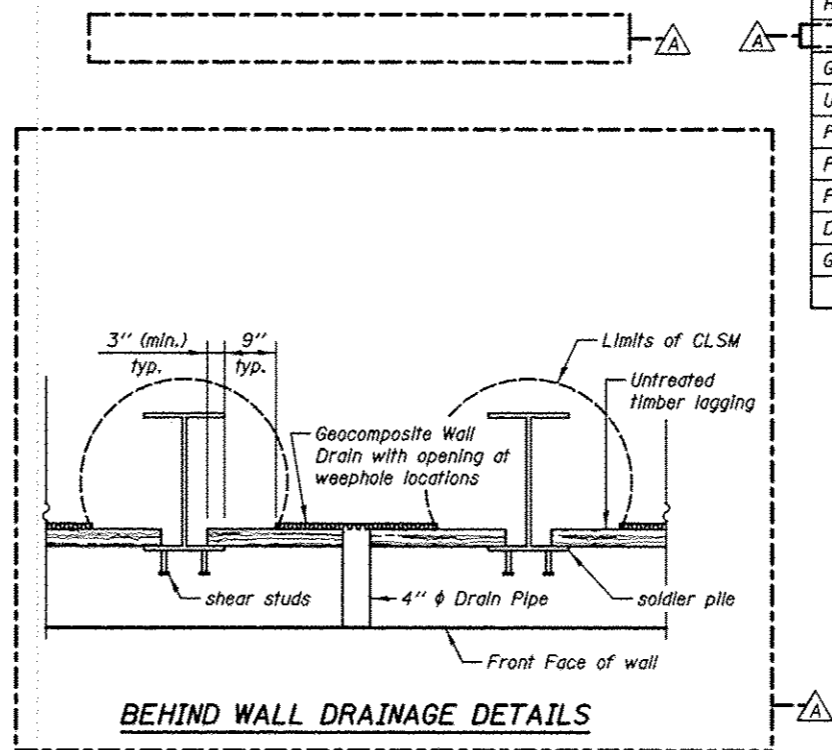


RAMP A - PROPOSED PROFILE GRADE LINE

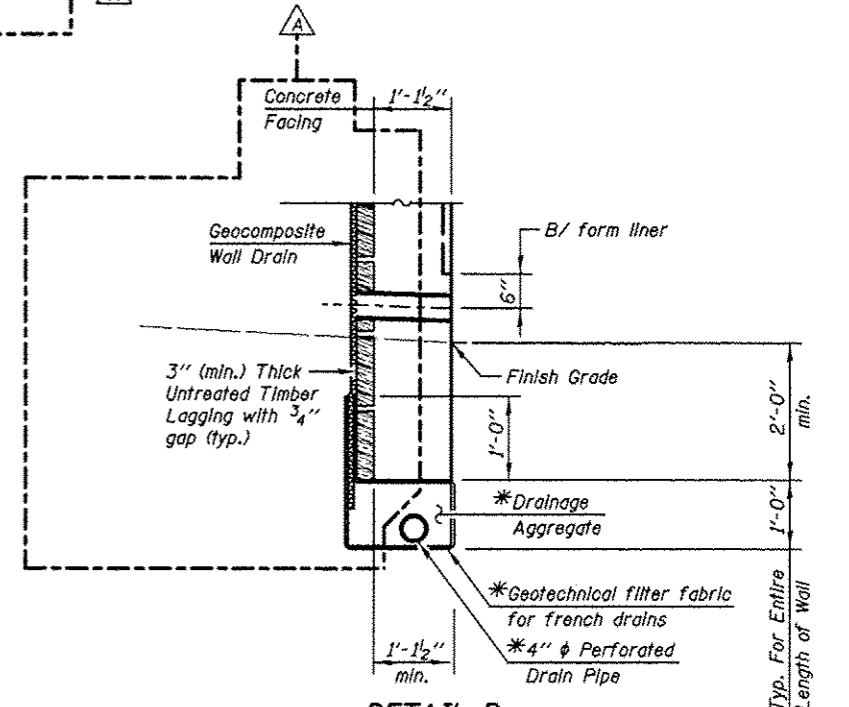
GENERAL NOTES
All structural steel shall conform to the requirements of AASHTO M 270 Grade 50 except as noted on plans.
Reinforcement bars designated (E) shall be epoxy coated.
The Contractor is responsible for the design and performance of the timber lagging using no less than a 3 in. nominal rough-sawn thickness and timber with a minimum allowable bending stress of 1000 psi.

TOTAL BILL OF MATERIAL

ITEM	UNIT	TOTAL
Structure Excavation	Cu. Yd.	115.0
Concrete Structures	Cu. Yd.	150.0
Form Liner Textured Surface	Sq. Ft.	1555.0
Stud Shear Connectors	Each	650
Reinforcement Bars, Epoxy Coated	Pound	13680
Geocomposite Wall Drain	Sq. Yd.	306.0
Untreated Timber Lagging	Sq. Ft.	2746.0
Furnishing Soldier Piles (HP Section)	Foot	546.0
Furnishing Soldier Piles (W Section)	Foot	1004.0
Pipe Underdrains for Structures 4"	Foot	489.0
Drilling And Setting Soldier Piles (In Soil)	Cu. Ft.	7620.0
Granular Backfill For Structures	Cu. Yd.	261.0



DETAIL A
(At Soldier Piles)



DETAIL B
(Between Soldier Piles)

UNDERDRAIN DETAIL

*Cost Included with "Pipe Underdrains for Structures"

KNIGHT
Engineers & Architects

SCALE - NONE
DATE - 10/15/2012

DESIGNED - TB
CHECKED - WPM
DRAWN - TB
CHECKED - WPM

REVISED 12/17/2012 WPM
REVISED
REVISED
REVISED

STATE OF ILLINOIS
DEPARTMENT OF TRANSPORTATION

TOTAL BILL OF MATERIAL & MISCELLANEOUS DETAILS
STRUCTURE NUMBER 022-W064

SHEET NO. SC-02 OF 10 SHEETS

F.A.P. RTE.	SECTION	COUNTY	TOTAL SHEETS	SHEET NO.
338	(112 & 113) WRS-5	DUPAGE	963	653
CONTRACT NO. 60131				

ILLINOIS FED. AID PROJECT