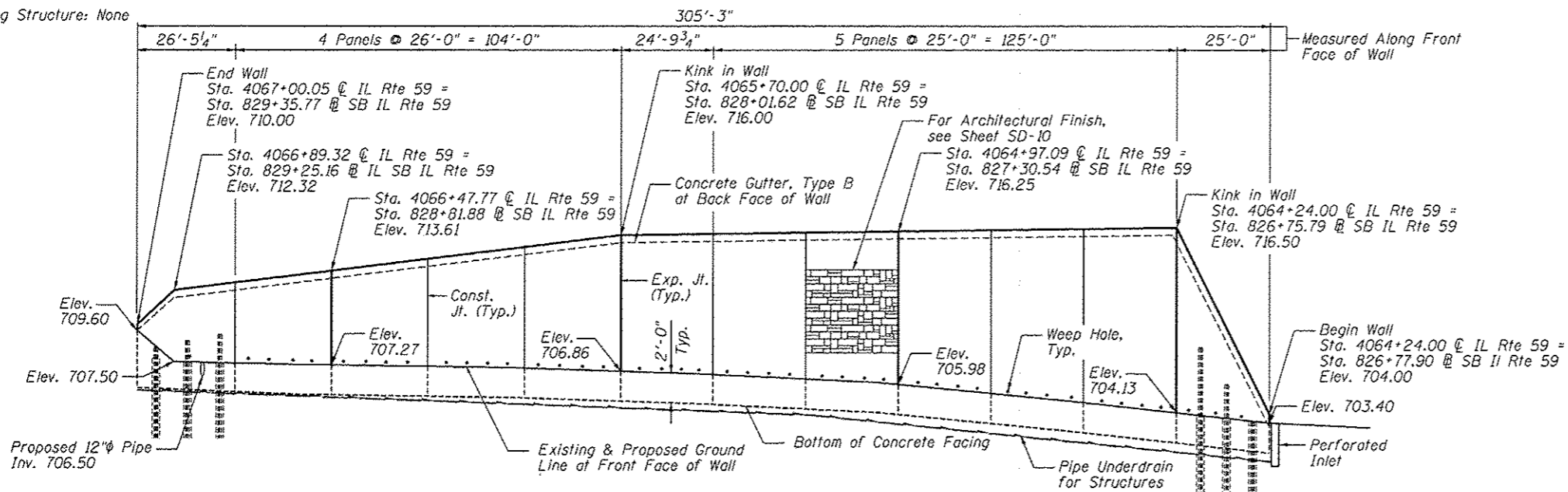


Bench Mark: DuPage County survey disk at north end of the west bridge wall, IL Rte 59 over Interstate Route 88, Elev. 731.43

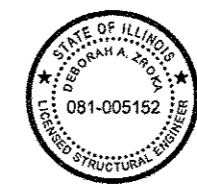
Existing Structure: None



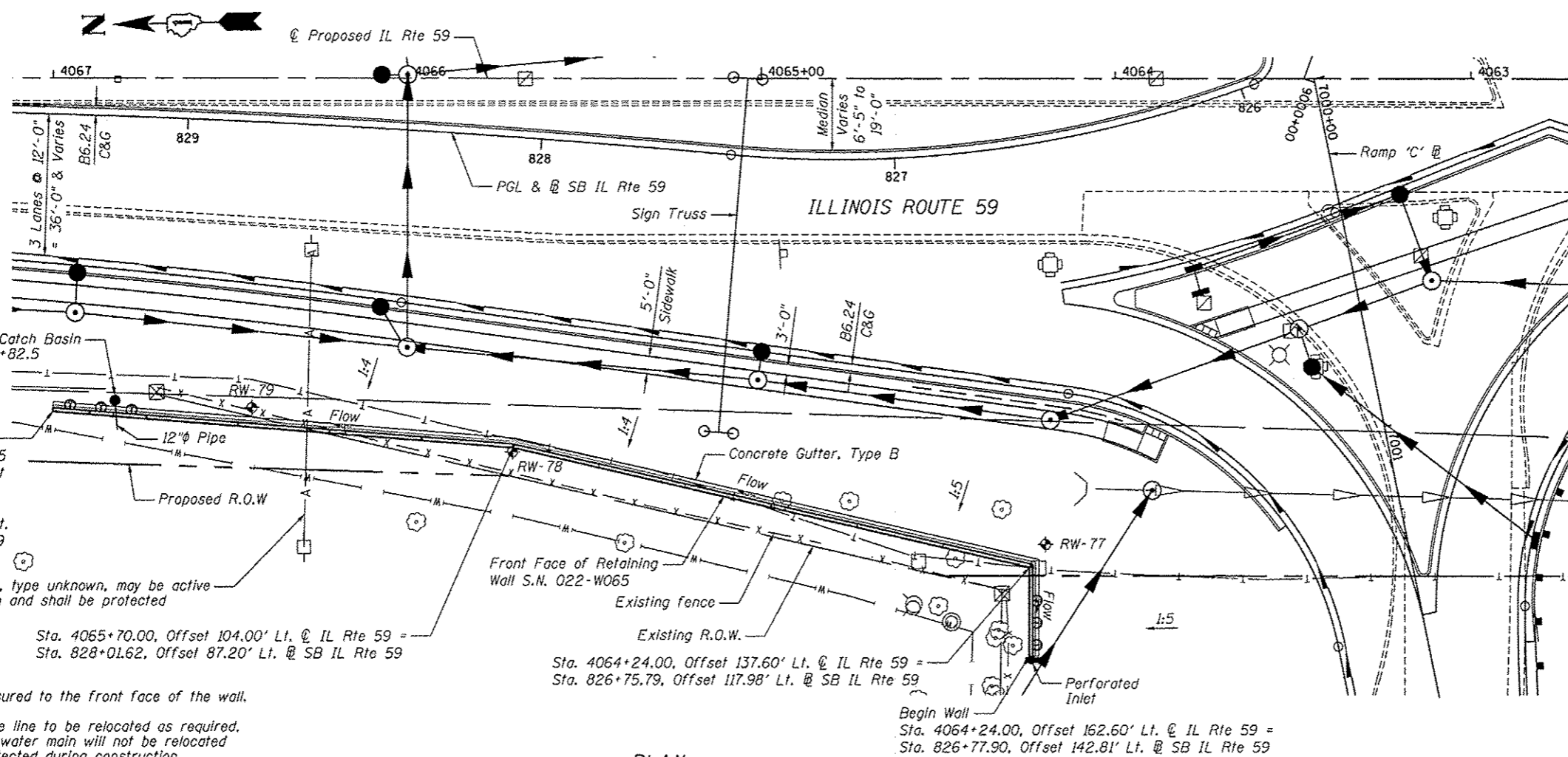
ELEVATION

INDEX OF SHEETS

- SD-1. General Plan
- SD-2. General Notes & Bill of Material
- SD-3. Soldier Pile Layout
- SD-4. Typical Section
- SD-5. Details
- SD-6. Concrete Facing 1
- SD-7. Concrete Facing 2
- SD-8. Concrete Facing & Details
- SD-9. Pile Splice Details
- SD-10. Architectural Finish Details
- SD-11. Boring Logs



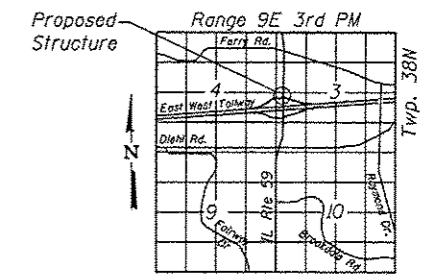
Deborah A. Zroka
 Signature Date 10/15/12
 November 30, 2014
 Expires



PLAN

APPROVED
 For Structural Adequacy Only

P. Carl Purney P.E.
 Engineer of Bridges & Structures



LOCATION SKETCH

GENERAL PLAN
 IL RTE 59 FAP RTE 338
 SECTION (112 & 113) WRS-5
 DUPAGE COUNTY
 STA. 4064+24.00 TO STA. 4067+00.05
 SN 022-W065



USER NAME = #USER#	DESIGNED - LAS	REVISED
CHECKED - DAZ	CHECKED - JLA	REVISED
DRAWN - SAW		REVISED
DATE = 10/15/2012		REVISED

STATE OF ILLINOIS
 DEPARTMENT OF TRANSPORTATION

GENERAL PLAN
 STRUCTURE NUMBER 022-W065
 SHEET NO. SD-1 OF SD-11 SHEETS

F.A.P. RTE.	SECTION	COUNTY	TOTAL SHEETS	SHEET NO.
338/IL 59	(112 & 113) WRS-5	DUPAGE	963	662
				CONTRACT NO. 60131