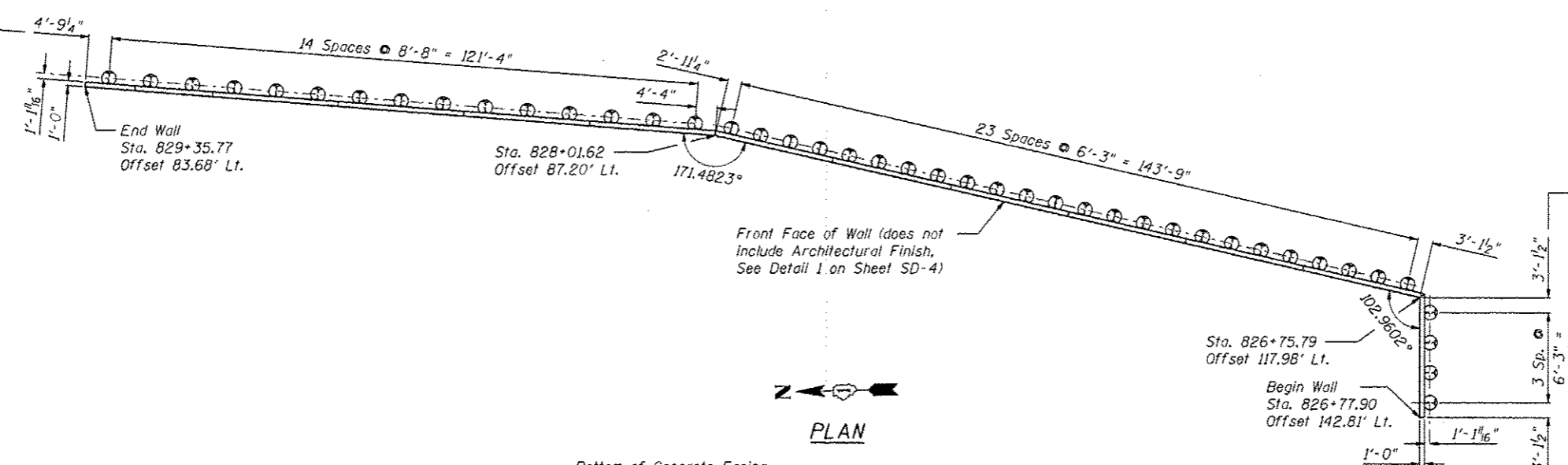


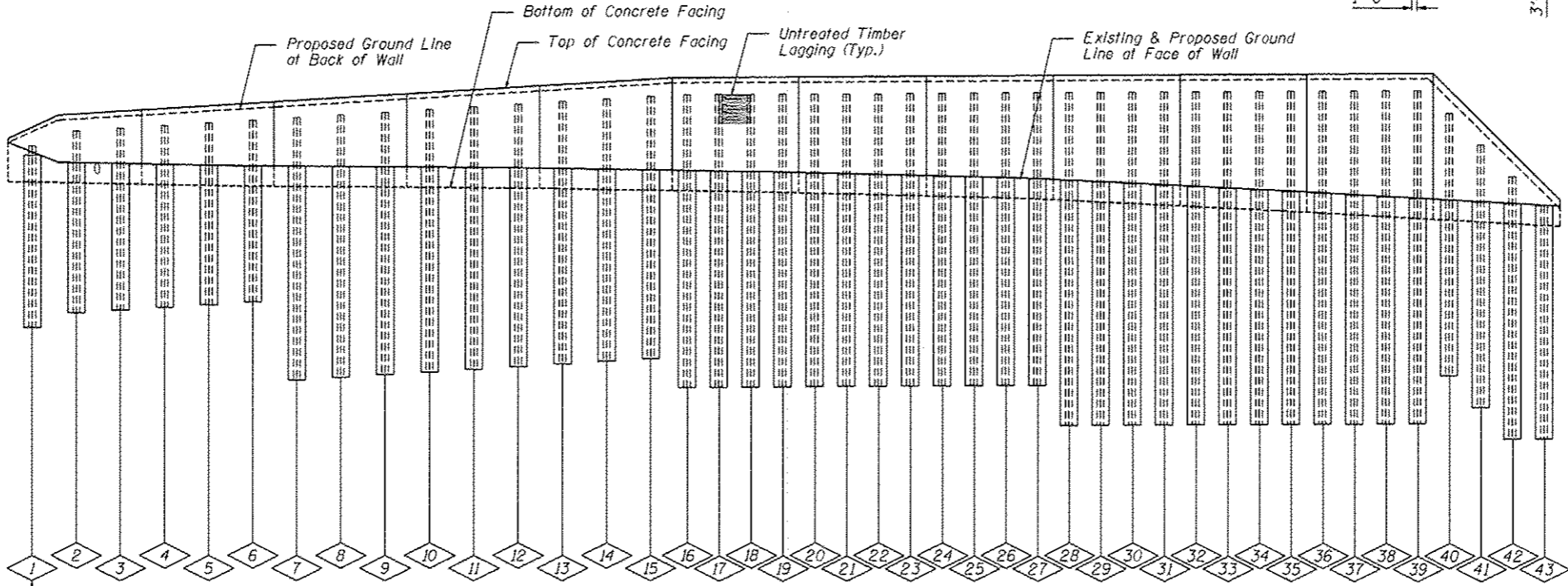
Dimensions Measured Along Front Face of Wall, Typ.



Dimensions Measured Along Front Face of Wall, Typ.

Front Face of Wall (does not include Architectural Finish, See Detail 1 on Sheet SD-4)

PLAN



DEVELOPED ELEVATION

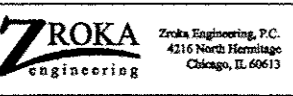
PILE SUMMARY

Pile No.	Station	Offset to C. Pile	Pile Designation	Length	Bottom Elevation	Top Elevation	Pile No.	Station	Offset to C. Pile	Pile Designation	Length	Bottom Elevation	Top Elevation	Pile No.	Station	Offset to C. Pile	Pile Designation	Length	Bottom Elevation	Top Elevation	
1	829+30.77	81.77	W27x146	18'-0"	691.40	709.40	16	827+98.30	85.54	W27x146	29'-0"	685.34	714.34	31	827+13.71	100.71	W27x146	33'-0"	681.66	714.66	
2	829+21.87	82.17	W27x146	18'-0"	692.75	710.75	17	827+91.94	86.48	W27x146	29'-0"	685.36	714.36	32	827+09.05	102.20	W27x146	33'-0"	681.68	714.68	
3	829+12.97	82.54	W27x146	18'-0"	693.01	711.01	18	827+85.58	87.41	W27x146	29'-0"	685.38	714.38	33	827+04.43	103.77	W27x146	33'-0"	681.70	714.70	
4	829+04.07	82.89	W27x146	18'-0"	693.28	711.28	19	827+79.21	88.33	W27x146	29'-0"	685.41	714.41	34	826+99.84	105.42	W27x146	33'-0"	681.72	714.72	
5	828+95.17	83.21	W27x146	18'-0"	693.55	711.55	20	827+72.85	89.23	W27x146	29'-0"	685.43	714.43	35	826+95.28	107.16	W27x146	33'-0"	681.74	714.74	
6	828+86.27	83.50	W27x146	18'-0"	693.81	711.81	21	827+66.47	90.13	W27x146	29'-0"	685.45	714.45	36	826+90.76	108.98	W27x146	33'-0"	681.76	714.76	
7	828+77.36	83.78	W27x146	26'-0"	686.08	712.08	22	827+60.10	91.01	W27x146	29'-0"	685.47	714.47	37	826+86.28	110.87	W27x146	33'-0"	681.78	714.78	
8	828+68.45	84.02	W27x146	26'-0"	686.34	712.34	23	827+53.72	91.87	W27x146	29'-0"	685.49	714.49	38	826+81.84	112.85	W27x146	33'-0"	681.80	714.80	
9	828+59.55	84.24	W27x146	26'-0"	686.61	712.61	24	827+47.33	92.73	W27x146	29'-0"	685.51	714.51	39	826+77.44	114.91	W27x146	33'-0"	681.82	714.82	
10	828+50.64	84.44	W27x146	26'-0"	686.87	712.87	25	827+42.24	93.60	W27x146	29'-0"	685.53	714.53	40	826+74.51	121.34	W27x146	26'-0"	687.27	713.27	
11	828+41.72	84.61	W27x146	26'-0"	687.14	713.14	26	827+37.42	94.57	W27x146	29'-0"	685.55	714.55	41	826+75.07	127.54	W27x146	26'-0"	684.15	710.15	
12	828+32.81	84.75	W27x146	26'-0"	687.40	713.40	27	827+32.63	95.62	W27x146	29'-0"	685.57	714.57	42	826+75.62	133.75	W27x146	26'-0"	681.02	707.02	
13	828+23.90	84.87	W27x146	26'-0"	687.67	713.67	28	827+27.86	96.76	W27x146	33'-0"	681.59	714.59	43	826+76.15	139.95	W27x146	26'-0"	677.90	703.90	
14	828+14.99	84.97	W27x146	26'-0"	687.94	713.94	29	827+23.11	97.99	W27x146	33'-0"	681.61	714.61								
15	828+06.07	85.04	W27x146	26'-0"	688.20	714.20	30	827+18.39	99.31	W27x146	33'-0"	681.64	714.64								

BILL OF MATERIAL

Item	Unit	Quantity
Furnishing Soldier Piles (W Section)	Foot	1,190
Drilling and Setting Soldier Piles (In Soil)	Cu Ft	6,258
Untreated Timber Lagging	Sq Ft	2,445
Stud Shear Connectors	Each	436

Note: All offsets are to the left of @ SB IL Rte 59



USER NAME = SAW
 DESIGNED - LAS
 CHECKED - DAZ
 DRAWN - SAW
 PLOT DATE = 12/12/2012
 DESIGNED - LAS
 CHECKED - JLA

STATE OF ILLINOIS
 DEPARTMENT OF TRANSPORTATION

SOLDIER PILE LAYOUT
 STRUCTURE NUMBER 022-W065

F.A.P. RTE.	SECTION	COUNTY	TOTAL SHEETS	SHEET NO.
338/IL 59	012 & 1131 WRS-5	DUPAGE	963	664
				CONTRACT NO. 60131

SHEET NO. SD-3 OF SD-11 SHEETS

ILLINOIS FED. AID PROJECT