

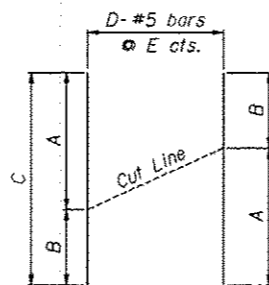
**ELEVATION**

**Notes:**

Minimum lap for #5 bar is 3'-8".

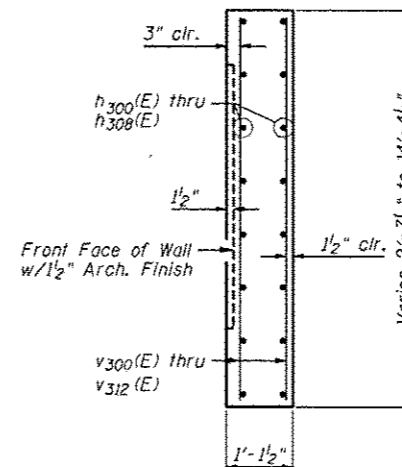
Space reinforcement in wall to miss shear studs.

\* signifies cut bar. Order per length on Bill of Material. Cut as shown in Cutting Diagram and use half of bars in each face.



**CUTTING DIAGRAM**

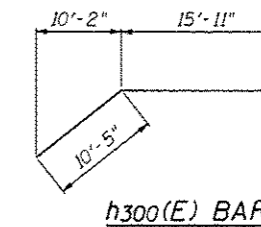
Bar	A	B	C	D	E
h <sub>308</sub> (E)	1'-8"	23'-4"	25'-0"	14	10"
v <sub>300</sub> (E)	4'-1"	6'-6"	10'-7"	10	12"
v <sub>301</sub> (E)	6'-6"	7'-1"	13'-7"	18	12"
v <sub>302</sub> (E)	7'-1"	8'-0"	15'-1"	27	12"
v <sub>303</sub> (E)	8'-0"	8'-11"	16'-11"	27	12"
v <sub>304</sub> (E)	8'-11"	9'-10"	18'-9"	27	12"
v <sub>305</sub> (E)	9'-10"	10'-9"	20'-7"	27	12"
v <sub>306</sub> (E)	10'-9"	11'-2"	21'-11"	26	12"
v <sub>307</sub> (E)	11'-2"	11'-7"	22'-9"	26	12"
v <sub>308</sub> (E)	11'-7"	11'-11"	23'-6"	26	12"
v <sub>309</sub> (E)	11'-11"	12'-8"	24'-7"	26	12"
v <sub>310</sub> (E)	12'-8"	13'-4"	26'-0"	26	12"
v <sub>311</sub> (E)	13'-4"	14'-0"	27'-4"	26	12"
v <sub>312</sub> (E)	14'-0"	2'-3"	16'-3"	26	12"



**SECTION THRU CONCRETE FACING**

**BILL OF MATERIAL**

Bar	No.	Size	Length	Shape
h <sub>300</sub> (E)	2	#5	26'-4"	—
h <sub>301</sub> (E)	34	#5	26'-1"	—
h <sub>302</sub> (E)	16	#5	4'-0"	—
h <sub>303</sub> (E)	128	#5	29'-8"	—
h <sub>304</sub> (E)	46	#5	25'-8"	—
h <sub>305</sub> (E)	140	#5	28'-8"	—
h <sub>306</sub> (E)	78	#5	24'-8"	—
h <sub>307</sub> (E)	2	#5	27'-7"	—
h <sub>308</sub> (E)	14	#5	25'-0"	—
v <sub>300</sub> (E)	10	#5	10'-7"	—
v <sub>301</sub> (E)	18	#5	13'-7"	—
v <sub>302</sub> (E)	27	#5	15'-1"	—
v <sub>303</sub> (E)	27	#5	16'-11"	—
v <sub>304</sub> (E)	27	#5	18'-9"	—
v <sub>305</sub> (E)	27	#5	20'-7"	—
v <sub>306</sub> (E)	26	#5	21'-11"	—
v <sub>307</sub> (E)	26	#5	22'-9"	—
v <sub>308</sub> (E)	26	#5	23'-6"	—
v <sub>309</sub> (E)	26	#5	24'-7"	—
v <sub>310</sub> (E)	26	#5	26'-0"	—
v <sub>311</sub> (E)	26	#5	27'-4"	—
v <sub>312</sub> (E)	26	#5	16'-3"	—
Item	Unit	Quantity		
Concrete Structures	Cu. Yd.	134.3		
Reinforcement Bars, Epoxy Coated	Pound	19,630		
Pipe Underdrains for Structures, 4"	Foot	305		
Geocomposite Wall Drain	Sq. Yd.	185		



**h<sub>300</sub>(E) BAR**

FILE NAME: \\S0131-1085-808-Cor-Fac-Details.dwg

**ZROKA** engineering  
Zroka Engineering, P.C.  
4216 North Hermitage  
Chicago, IL 60613

USER NAME = SAW	DESIGNED - LAS	REVISED 12/17/2012 L.A.S.
	CHECKED - DAZ	REVISED
PLOT SCALE = 8.8908' / 1"	DRAWN - SAW	REVISED
PLOT DATE = 12/12/2012	CHECKED - JLA	REVISED

**STATE OF ILLINOIS  
DEPARTMENT OF TRANSPORTATION**

**CONCRETE FACING & DETAILS  
STRUCTURE NUMBER 022-W065**

SHEET NO. SD-8 OF SD-11 SHEETS

F.A.P. RITE.	SECTION	COUNTY	TOTAL SHEETS	SHEET NO.
338/1L 59	(112 & 113) WRS-5	DUPAGE	963	669
		CONTRACT NO.	60131	

ILLINOIS FED. AID PROJECT