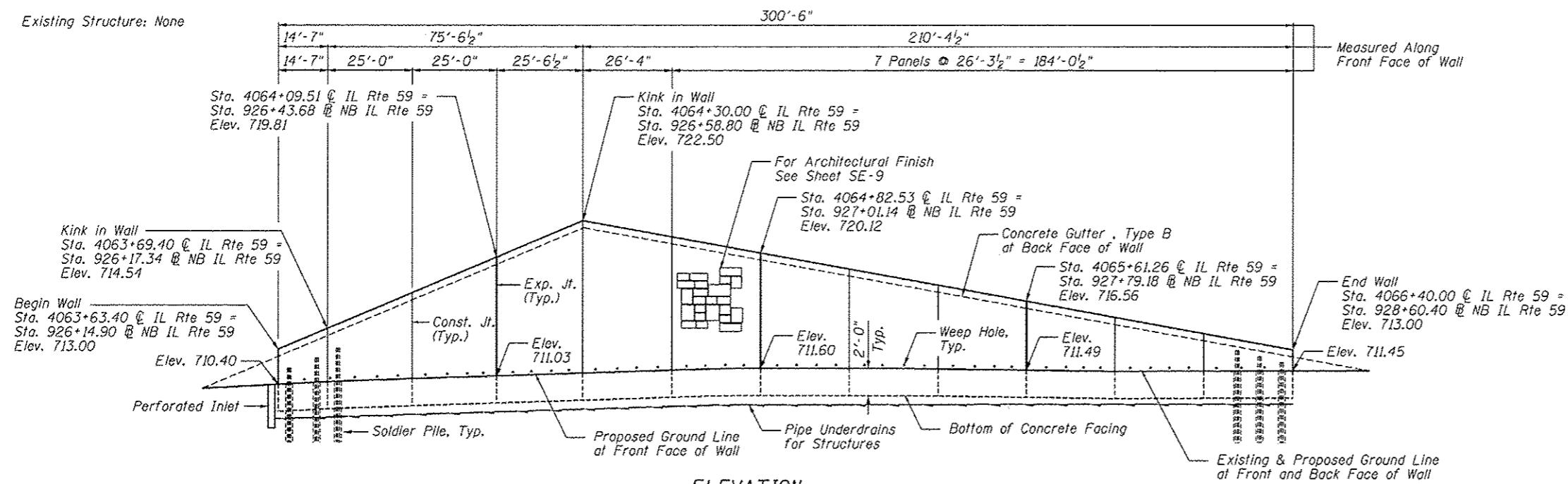
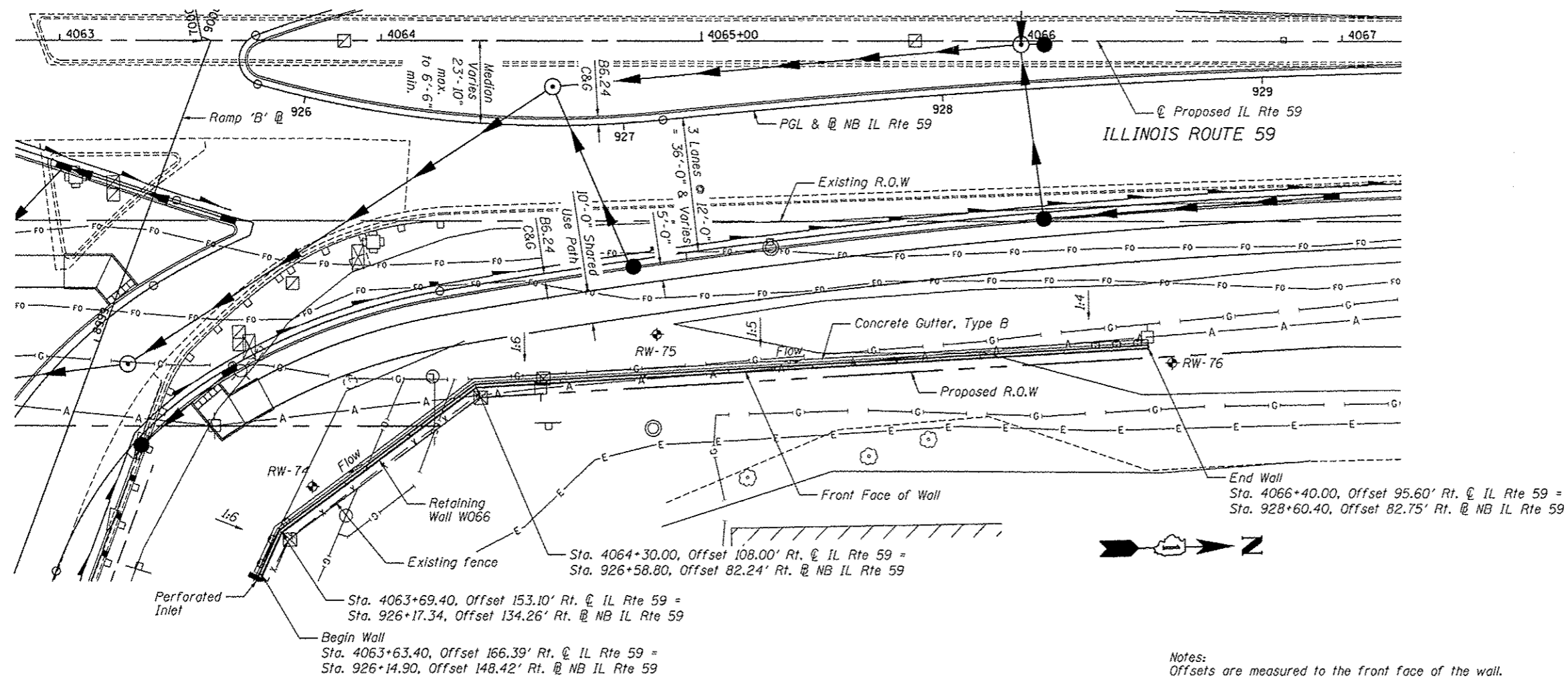


Bench Mark: DuPage County survey disk at north end of the west bridge wall,
IL Rte 59 over Interstate Route 88, Elev. 731.43

Existing Structure: None



ELEVATION



PLAN

Notes:
Offsets are measured to the front face of the wall.

Existing utilities including gas, fiber optic and electric aerial lines to be adjusted or relocated as required.

INDEX OF SHEETS

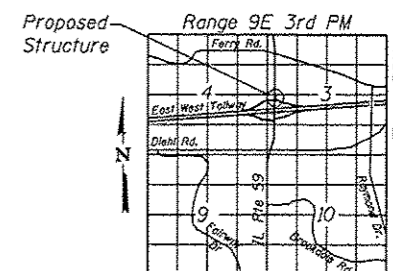
- SE-1. General Plan
- SE-2. General Notes & Bill of Material
- SE-3. Soldier Pile Layout
- SE-4. Typical Section
- SE-5. Details
- SE-6. Concrete Facing 1
- SE-7. Concrete Facing 2
- SE-8. Concrete Facing Details
- SE-9. Pile Splice Details
- SE-10. Architectural Finish Details
- SE-11. Boring Logs



Signature: *Deborah A. Aron* Date: 10-15-12
November 30, 2014
Expires

APPROVED
For Structural Adequacy Only

Signature: *D. Carl Pusney*
Engineer of Bridges & Structures



LOCATION SKETCH

GENERAL PLAN
IL RTE 59 FAP RTE 338
SECTION (112 & 113) WRS-5
DUPAGE COUNTY

STA. 4063+63.40 TO STA. 4066+40.00
SN 022-W066



USER NAME = #USER#	DESIGNED - LAS	REVISIONS
PLLOT SCALE = #SCALE#	CHECKED - DAZ	REVISIONS
DATE = 10/15/2012	DRAWN - SAW	REVISIONS
	CHECKED - JLA	REVISIONS

STATE OF ILLINOIS
DEPARTMENT OF TRANSPORTATION

GENERAL PLAN
STRUCTURE NUMBER 022-W066

SHEET NO. SE-1 OF SE-11 SHEETS

F.A.P. RTE.	SECTION	COUNTY	TOTAL SHEETS	SHEET NO.
338/IL 59	(112 & 113) WRS-5	DUPAGE	963	673
			CONTRACT NO. 60131	

ILLINOIS FED. AID PROJECT