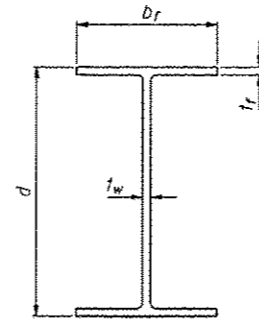
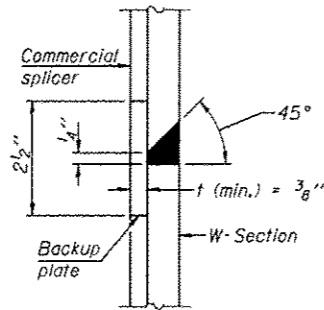


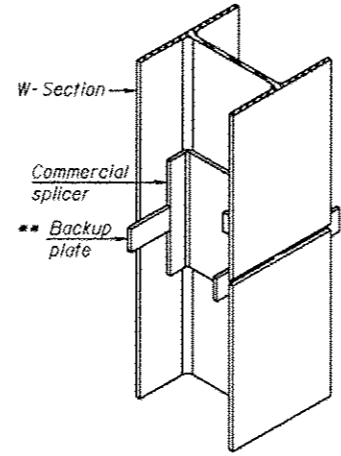
ELEVATION



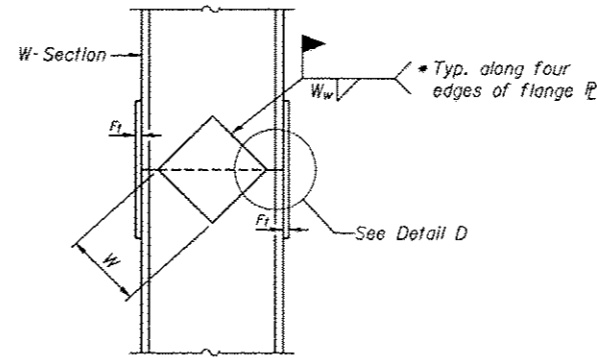
Designation	Depth d	Flange width b _f	Flange thickness t _f	Web thickness t _w	Encasement diameter A
W27x146	27 ³ / ₈ "	14"	1"	5 ⁵ / ₈ "	36"



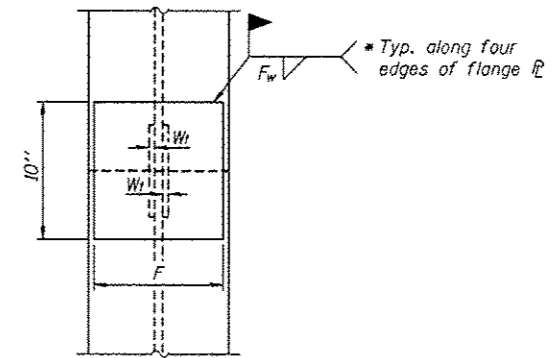
DETAIL "B"



ISOMETRIC VIEW

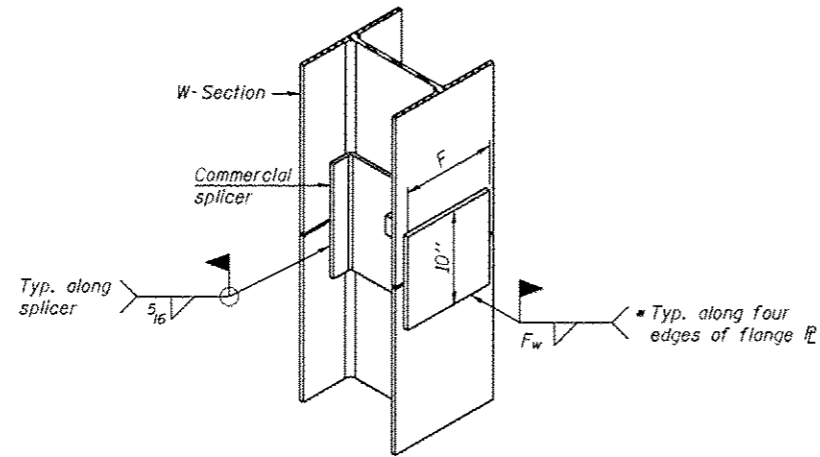


ELEVATION

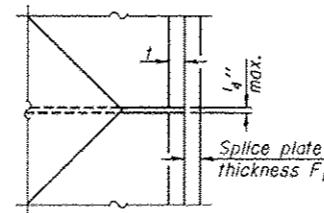


END VIEW

WELDED COMMERCIAL SPLICE



ISOMETRIC VIEW



DETAIL D

Designation	F	F _f	F _w	W	W _f	W _w
W27x146	12"	1 ¹ / ₄ "	3 ³ / ₄ "	16 ³ / ₄ "	5 ⁵ / ₈ "	3 ³ / ₈ "

WELDED PLATE FIELD SPLICE

WELDED COMMERCIAL SPLICE ALTERNATE

- Interrupt welds 1/4" from end of web and/or each flange.
- ** Remove portions of backup plates that extend outside the flanges.

Note:
The steel W-Sections shall be according to AASHTO M270 Grade 36.



FILE NAME = ... \B0131-w066-081-PlateSpliceDetail.dgn