

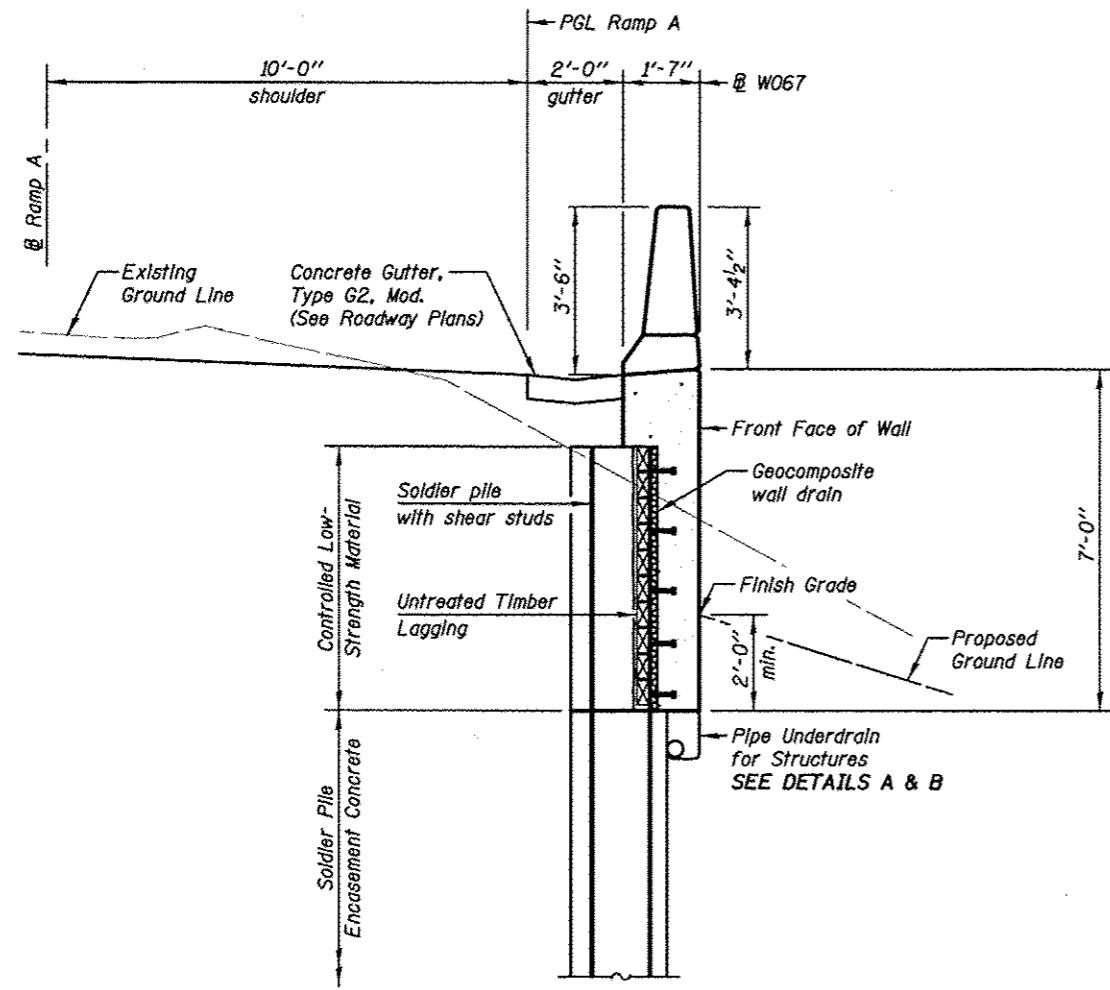
GENERAL NOTES

All structural steel shall conform to the requirements of AASHTO M 270 Grade 50 except as noted on plans.

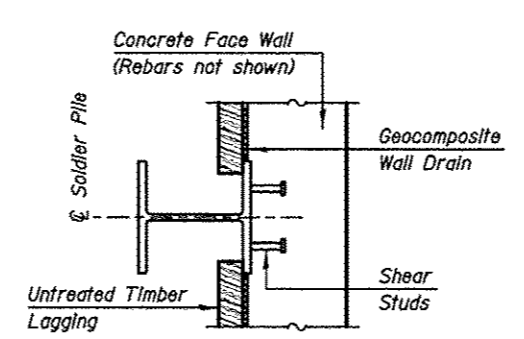
Reinforcement bars designated (E) shall be epoxy coated.

The Contractor is responsible for the design and performance of the timber lagging using no less than a 3 in. nominal rough-sawn thickness and timber with a minimum allowable bending stress of 1000 psi.

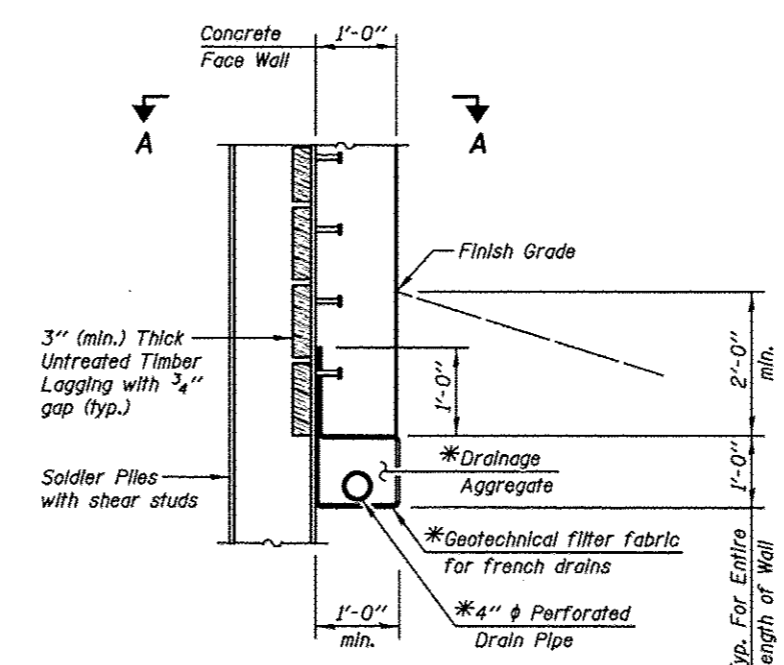
Concrete Sealer shall be applied to exposed surfaces of the front face, top face and back face of wall.



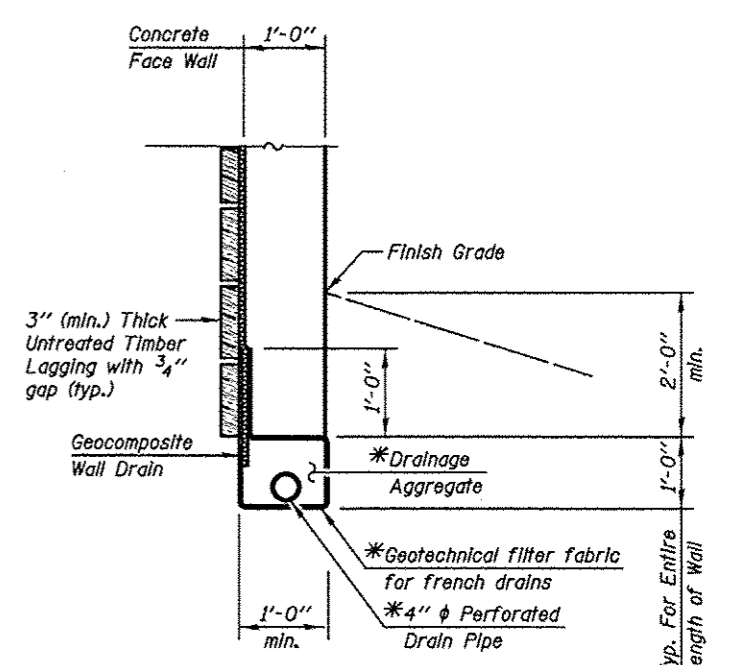
TYPICAL WALL SECTION
(For Details See Sheet SF-4)



SECTION A-A - PLAN



DETAIL A
(At Soldier Piles)



DETAIL B
(Between Soldier Piles)

UNDERDRAIN DETAIL

*Cost Included with "Pipe Underdrains for Structures"

KNIGHT Engineers & Architects	DESIGNED - TB	REVISOR	STATE OF ILLINOIS DEPARTMENT OF TRANSPORTATION	TYPICAL WALL SECTION AND DETAILS STRUCTURE NUMBER 022-W067 TOLLWAY WALL EW123.5R,EB(R)	F.A.P. RTE.	SECTION	COUNTY	TOTAL SHEETS	SHEET NO.
	CHECKED - WPM	REVISOR			338	(112 & 113) WRS-5	DUPAGE	963	685
SCALE - NONE	DRAWN - TB	REVISOR	SHEET NO. SF-2 OF 5 SHEETS	CONTRACT NO. 60131	ILLINOIS FED. AID PROJECT				
DATE - 10/15/2012	CHECKED - WPM	REVISOR							