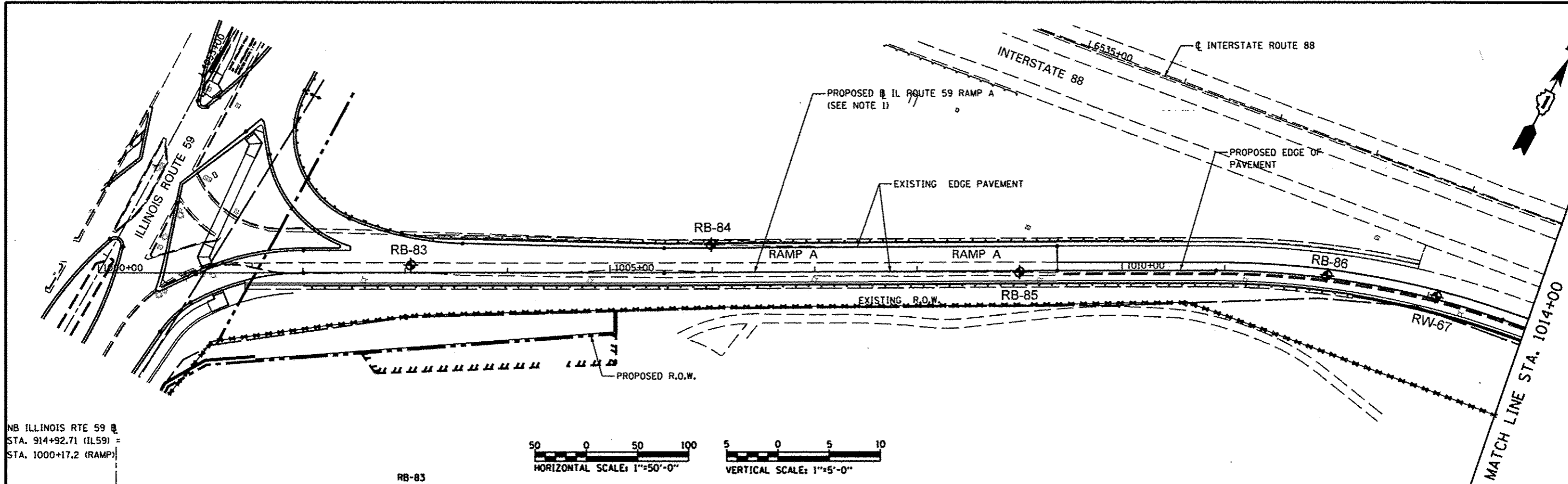
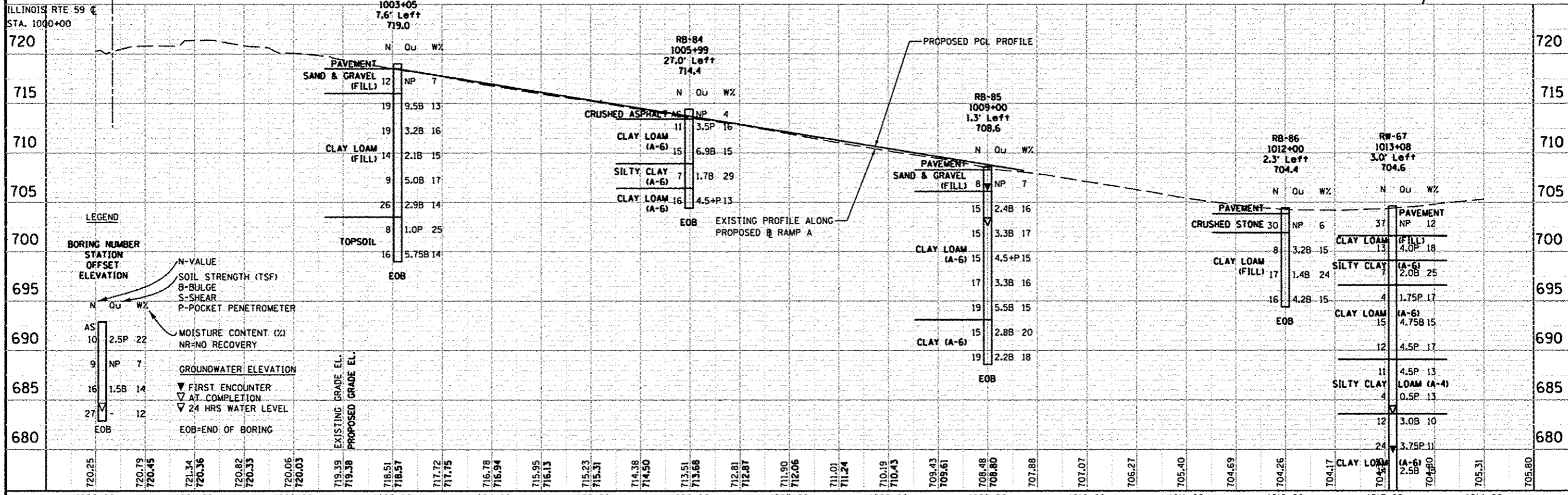
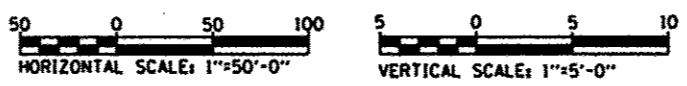


DATE	
BY	
REVISIONS	
NO.	
DESCRIPTION	
DATE	
BY	
NO.	
DESCRIPTION	
DATE	
BY	
NO.	
DESCRIPTION	
DATE	
BY	
NO.	
DESCRIPTION	



NB ILLINOIS RTE 59 @ STA. 914+92.71 (IL59) = STA. 1000+17.2 (RAMP)



DATE	
BY	
REVISIONS	
NO.	
DESCRIPTION	
DATE	
BY	
NO.	
DESCRIPTION	
DATE	
BY	
NO.	
DESCRIPTION	

**LEGEND**

**BORING NUMBER**  
STATION  
OFFSET  
ELEVATION

**N-VALUE**  
SOIL STRENGTH (TSF)  
B-BULGE  
S-SHEAR  
P-POCKET PENETROMETER

**MOISTURE CONTENT (%)**  
NR=NO RECOVERY

**GROUNDWATER ELEVATION**  
▽ FIRST ENCOUNTER AT COMPLETION  
▽ 24 HRS WATER LEVEL

**EOB=END OF BORING**