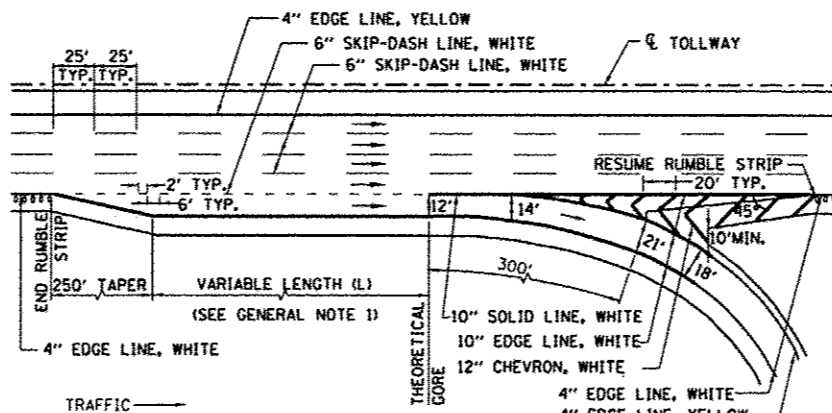
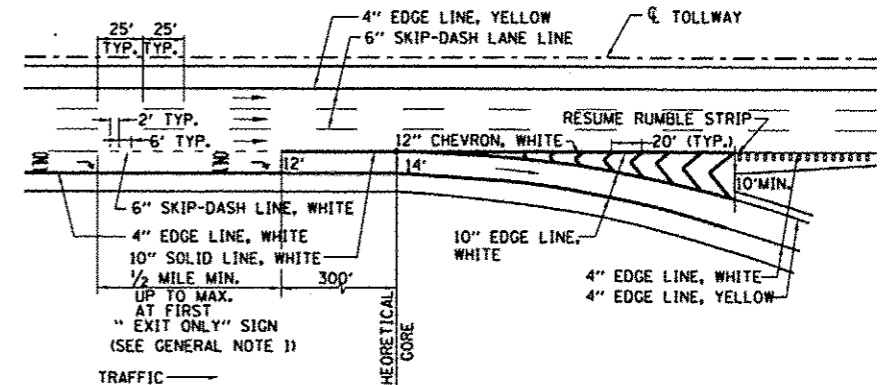


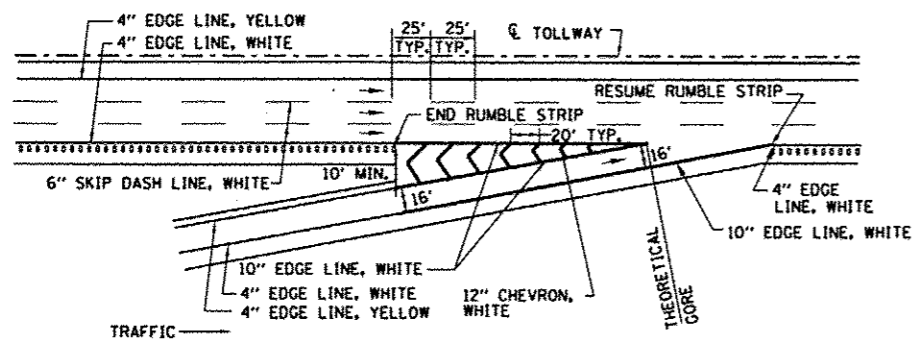
ENTRANCE - SINGLE LANE RAMP - PARALLEL TYPE



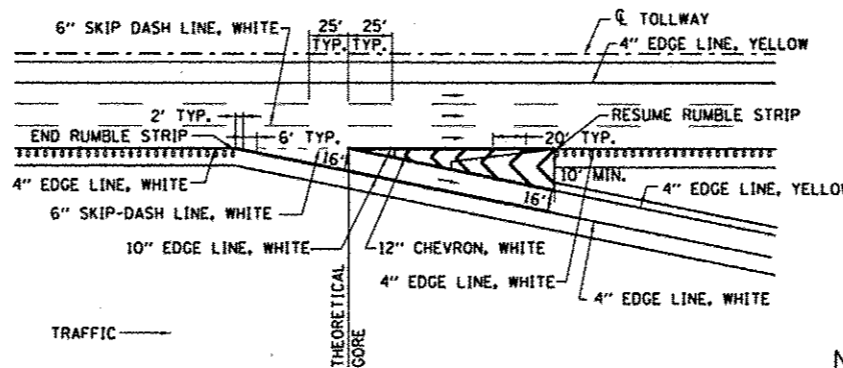
EXIT - SINGLE LANE RAMP - PARALLEL TYPE



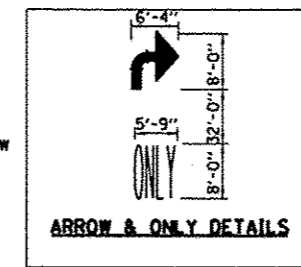
EXIT - SINGLE LANE RAMP - WITH AUXILIARY LANE



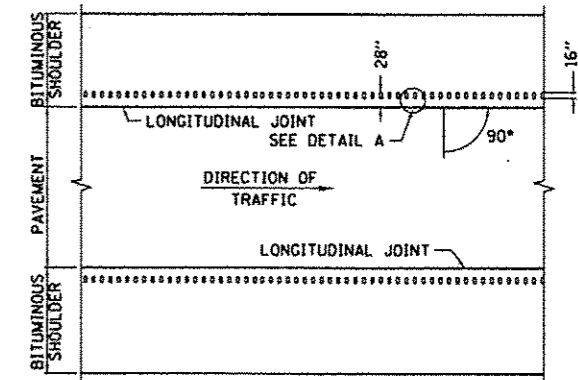
ENTRANCE - SINGLE LANE RAMP - TAPER TYPE



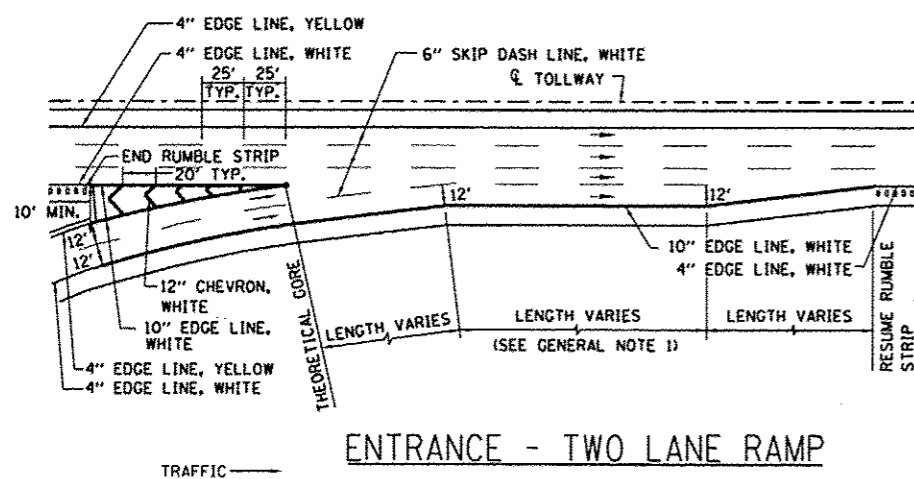
EXIT - SINGLE LANE RAMP - TAPER TYPE



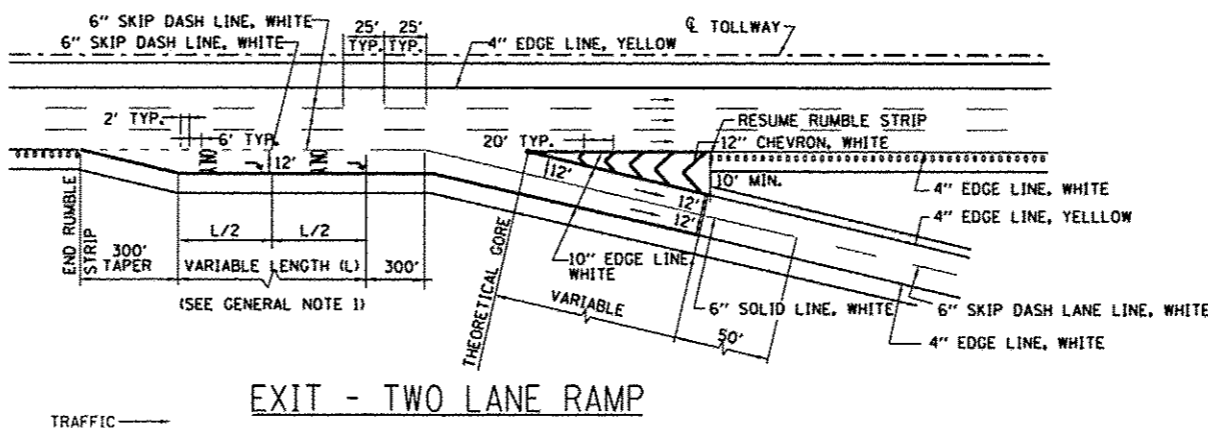
NOTE:
PAVEMENT MARKING LETTERS AND SYMBOLS- ONLY AND ARROW ARE TO BE TYPICALLY PLACED AT 1/2 MILE EXIT ONLY GUIDE SIGN, AT GORE EXIT GUIDE SIGN AND APPROXIMATELY HALFWAY BETWEEN THE TWO.



TYPICAL PLAN VIEW
MAINLINE



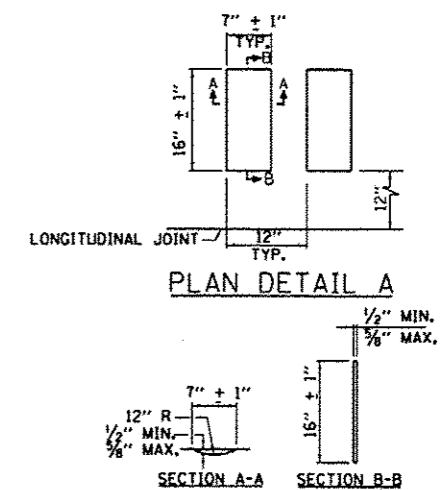
ENTRANCE - TWO LANE RAMP



EXIT - TWO LANE RAMP

GENERAL NOTES:

1. RUMBLE STRIPS SHALL BE INSTALLED UP TO THE GORE WHEN AUXILIARY LANES, ACCELERATION LANES AND DECELERATION LANES, LENGTHS ARE GREATER THAN 1000 FT.
2. ROADWAY MARKING MATERIALS TO BE USED ON FINISHED CONCRETE SURFACE AND HOT-MIX ASPHALT SURFACE SHALL BE AS SHOWN ON THE PLANS.
3. ALL LANE LINES AND EDGE LINES SHALL BE GROOVED.
4. GORE STRIPING (CHEVRON) SHALL BE SURFACED APPLIED.
5. LETTERS AND SYMBOL MARKING SHALL BE SURFACED APPLIED.



SHOULDER RUMBLE STRIP
DETAILS

CONTRACT 60I31 SHEET 930 OF 963
SHEET 1 OF 2

APPROVED: *Paul Kovacs* DATE 7-1-2009...
CHIEF ENGINEER

DATE	REVISIONS
7-1-2009	ADDED LINE GROOVING NOTES

Illinois Tollway
Open Roads for a Faster Future

PAVEMENT MARKING
AND SHOULDER
RUMBLE STRIP DETAILS

STANDARD D6-01