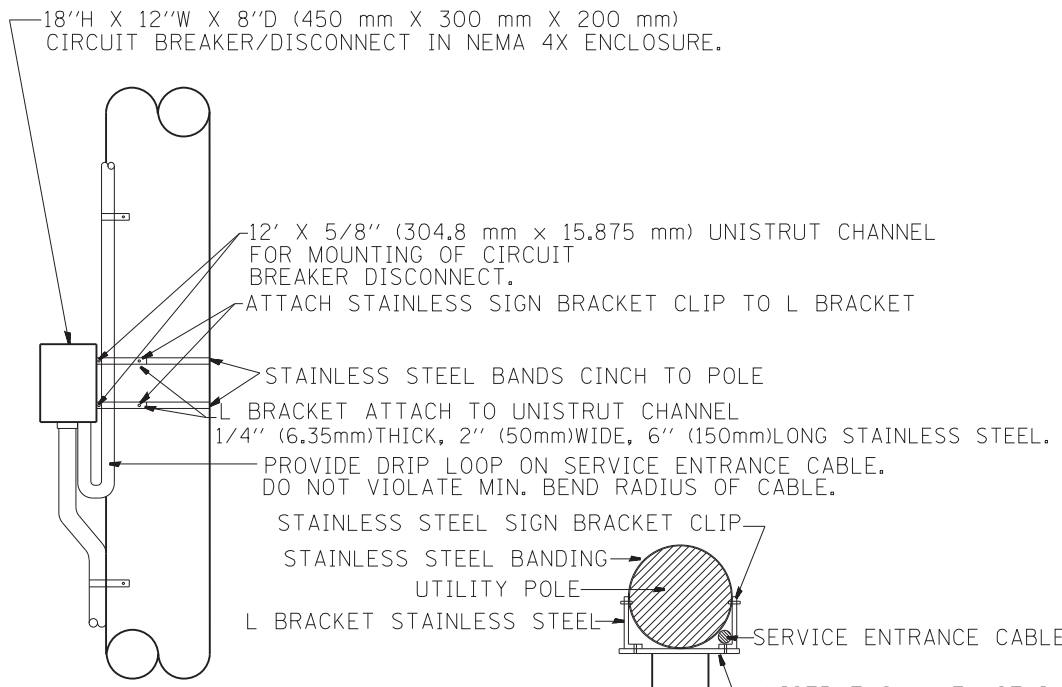
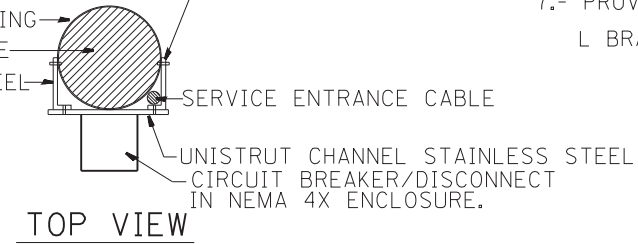


FRONT VIEW

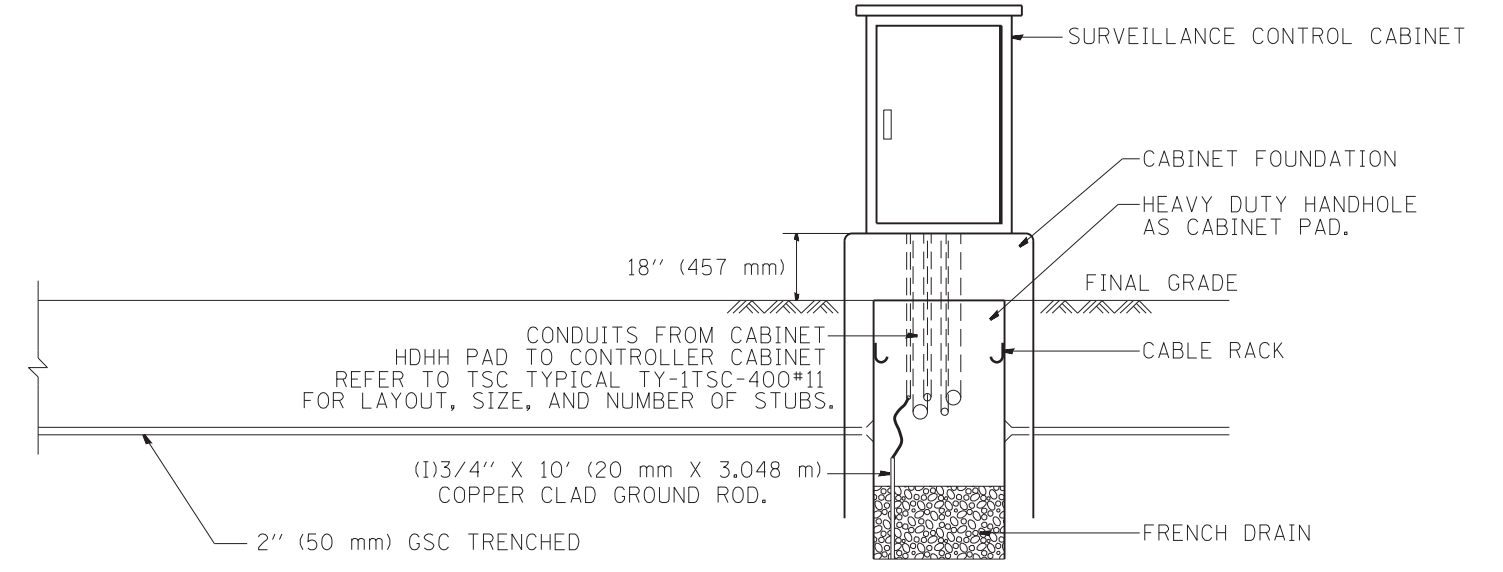
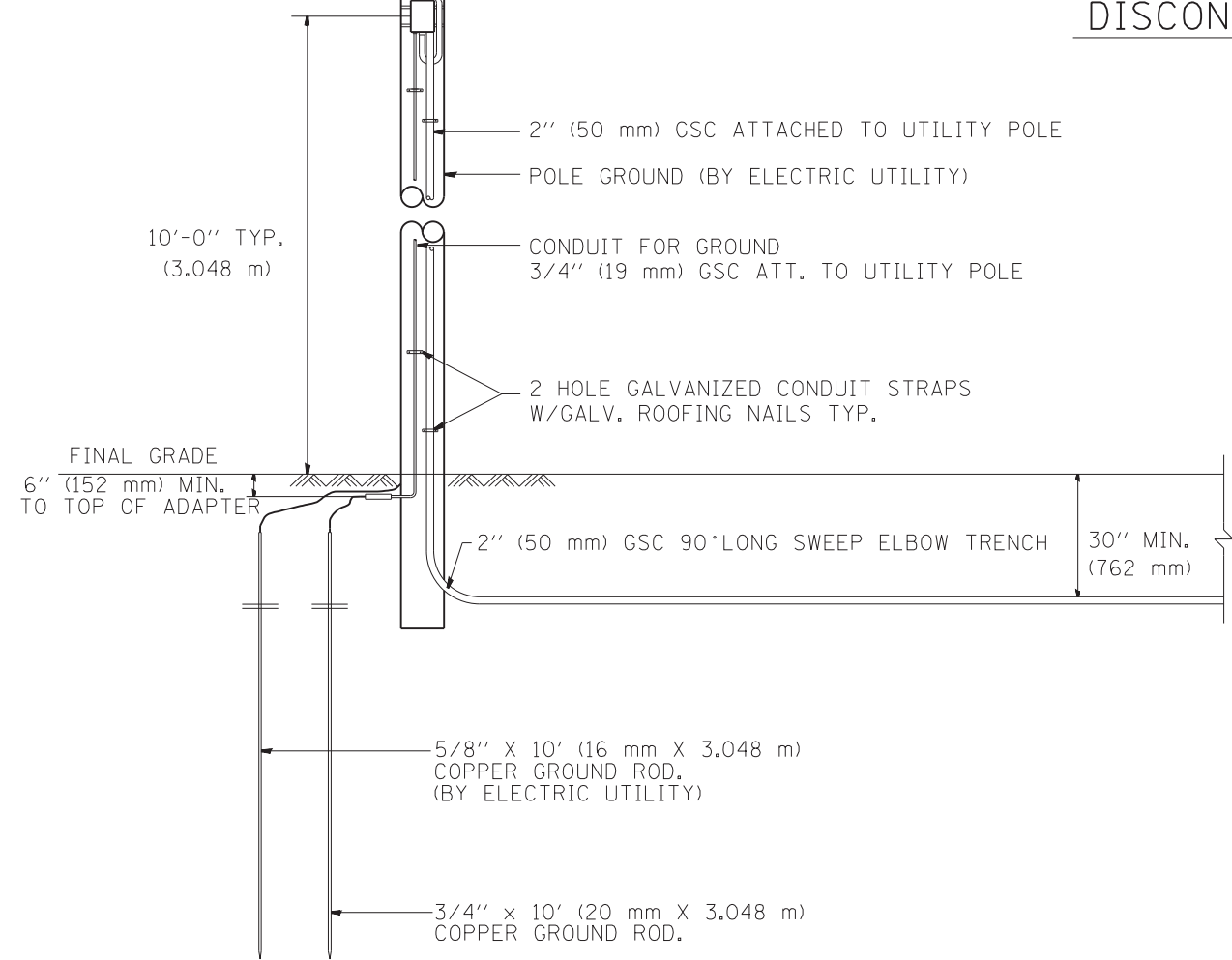


SIDE VIEW



TOP VIEW

NTS
DISCONNECT MOUNTING DETAIL



- NOTES:**
- 1.- ALL CONDUIT BUSHINGS SHALL HAVE AN ISOLATED THROAT.
 - 2.- PROVIDE HEAT SHRINK BOOT AT THE TOP OF THE SERVICE ENTRANCE CABLE FOR MOISTURE PROOFING.
 - 3.- ALL CONNECTIONS TO GROUND RODS SHALL BE EXOTHERMIC UNLESS OTHERWISE NOTED.
 - 4.- ATTACH INCOMING ELECTRIC SERVICE CABLE TO UTILITY POLE EVERY 5 FEET USING INSULATED U-NAIL.
 - 5.- PROVIDE CABLE RACK IN HANDHOLES.
 - 6.- ALL CONDUCTORS SHALL BE COPPER.
 - 7.- PROVIDE STAINLESS STEEL HARDWARE TO ATTACH L BRACKETS TO UNISTRUT AND TO SIGN HANGER.

FILE NAME =	USER NAME = mezag	DESIGNED - R.L.	REVISED -	STATE OF ILLINOIS DEPARTMENT OF TRANSPORTATION TRAFFIC SYSTEMS CENTER	POLE MOUNTED DISCONNECT MOUNTING DETAILS			F.A. RTE. 94	SECTION 2012-059-BR	COUNTY COOK	TOTAL SHEETS 631	SHEET NO. 372
CONTRACT NO. 60J12	SCALE: NONE	SHEET NO. 13 OF 16 SHEETS	STA. TO STA.		FED. ROAD DIST. NO.	ILLINOIS FED. AID PROJECT						
PLOT SCALE = 100.0000' / 1in.	CHECKED - R.L.	REVISED -	DATE - 03/30/99		TRAFFIC SYSTEMS CENTER (TY-1TSC-400#20)							
PLOT DATE = 12/6/2012	DATE - 03/30/99	REVISED -										