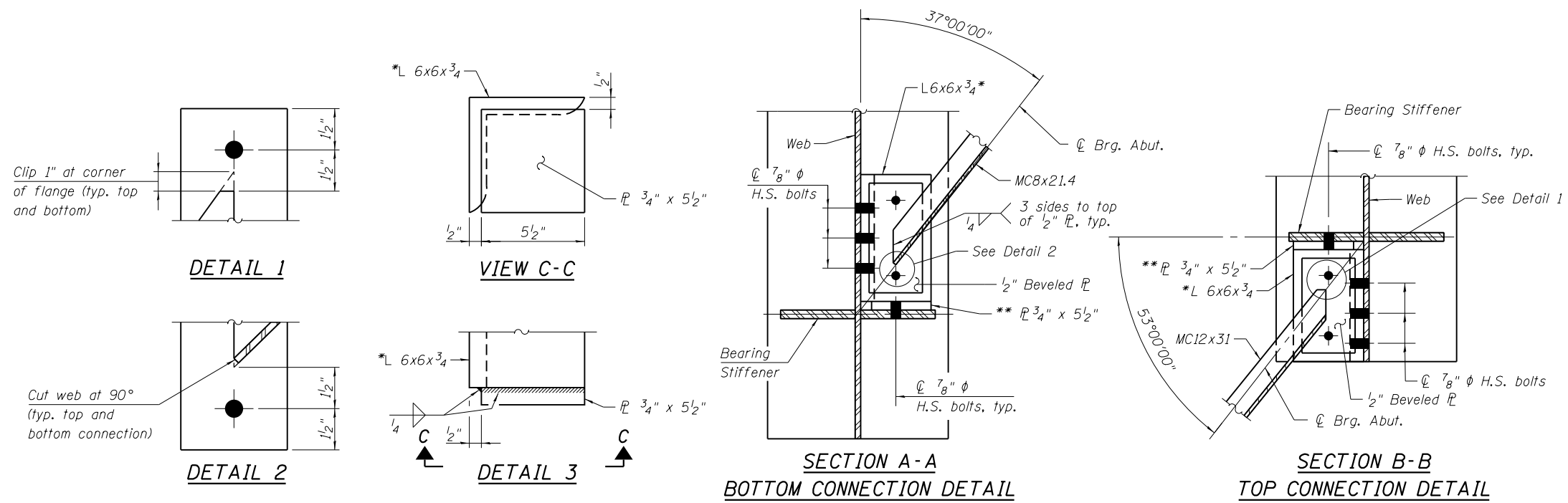


2/21/13 PM

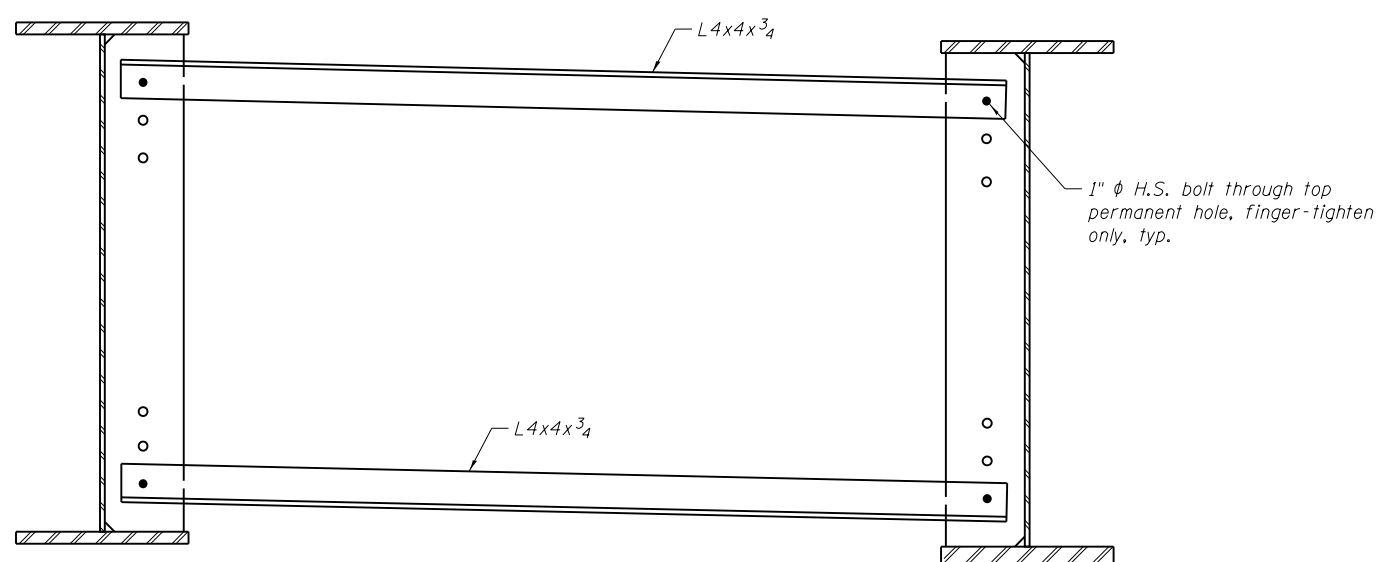
3/29/2013

S:\1072_05_CADD\Structure\1\SN_0162470\CADD_Sheets\0162470-60J12-023-5503.dgn



* Two 3/4" plates connected with 1/4" fillet welds may be used in lieu of L6x6x³/₄.

** Weld 3/4" x 5 1/2" plate to seat as shown in Detail 3.



Note:
See Interior Cross Frame D1 on Sheet S-22 for dimensions and details not shown here.

BOWMAN, BARRETT & ASSOCIATES INC.
CONSULTING ENGINEERS
Chicago, Illinois
312.228.0100
www.bbainc.com

USER NAME =	DESIGNED - BAK	REVISED -
PLOT SCALE =	CHECKED - TL	REVISED -
PLOT DATE = 03/29/2013	DRAWN - MTR	REVISED -
	CHECKED - BAK	REVISED -

STATE OF ILLINOIS
DEPARTMENT OF TRANSPORTATION

STRUCTURAL STEEL DETAILS III
STRUCTURE NO. 016-2470

SHEET NO. S-23 OF S-53 SHEETS

F.A.I. RTE.	SECTION	COUNTY	TOTAL SHEETS	SHEET NO.
94	2012-059-BR	COOK	631	398
CONTRACT NO. 60J12				
ILLINOIS FED. AID PROJECT				