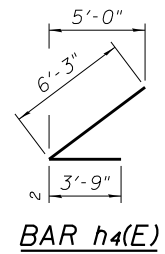


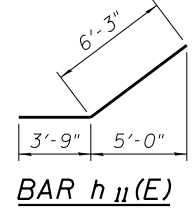
2/21/13 7 PM

3/29/2013

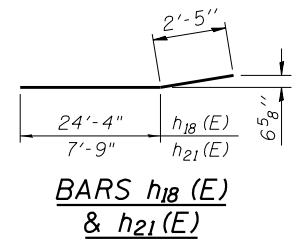
S:\1072\_05\_CADD\Structure\1\SN\_0162470\CADD Sheets\0162470-60J12-034-EA03.dgn



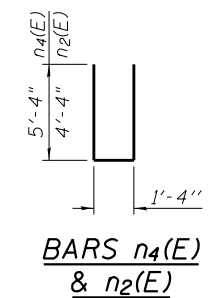
BAR h4(E)



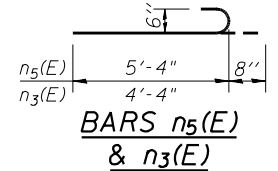
BAR h11(E)



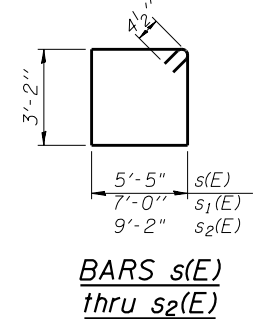
BARS h18(E) & h21(E)



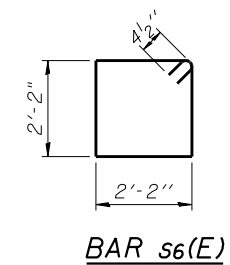
BARS n4(E) & n2(E)



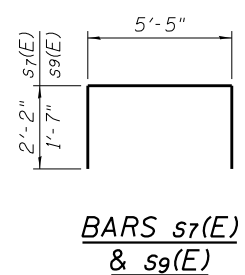
BARS n5(E) & n3(E)



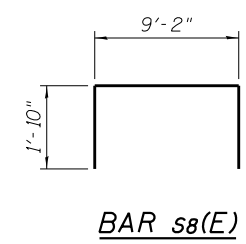
BARS s(E) thru s2(E)



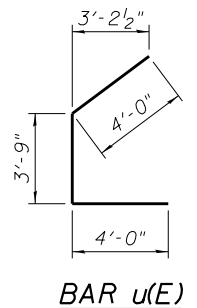
BAR s6(E)



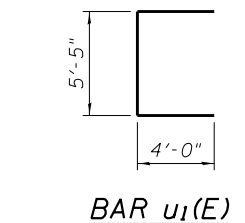
BARS s7(E) & s9(E)



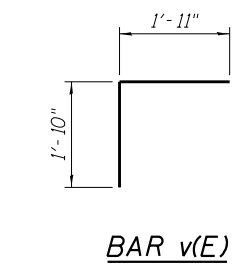
BAR s8(E)



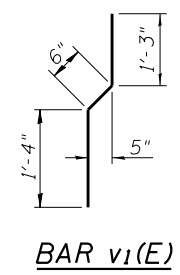
BAR u(E)



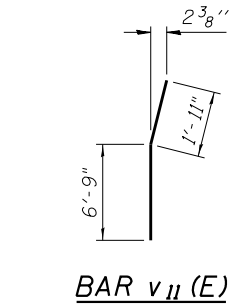
BAR u1(E)



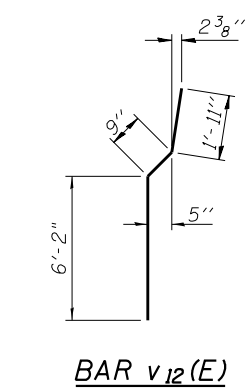
BAR v(E)



BAR v1(E)



BAR v11(E)



BAR v12(E)

**EAST ABUTMENT  
BILL OF MATERIAL**

Bar	No.	Size	Length	Shape
h3(E)	10	#5	29'-10"	—
h4(E)	12	#5	10'-0"	∟
h5(E)	5	#6	29'-10"	—
h10(E)	10	#5	35'-11"	—
h11(E)	12	#5	10'-0"	∟
h12(E)	5	#6	35'-11"	—
h15(E)	10	#5	20'-2"	—
h16(E)	5	#5	12'-7"	—
h17(E)	13	#4	25'-8"	—
h18(E)	9	#4	26'-9"	—
h19(E)	5	#5	19'-6"	—
h20(E)	12	#4	11'-8"	—
h21(E)	8	#4	10'-2"	—
n2(E)	11	#6	10'-0"	—
n3(E)	6	#6	5'-0"	—
n4(E)	24	#6	12'-0"	—
n5(E)	6	#6	6'-0"	—
p4(E)	24	#7	21'-2"	—
p5(E)	6	#7	27'-0"	—
p6(E)	24	#7	23'-1"	—
p7(E)	6	#7	11'-4"	—
s(E)	59	#4	17'-11"	□
s1(E)	2	#4	21'-1"	□
s2(E)	2	#4	25'-5"	□
s6(E)	40	#4	9'-5"	□
s7(E)	30	#4	9'-9"	□
s8(E)	2	#4	12'-10"	□
s9(E)	13	#4	8'-7"	□
u(E)	4	#6	11'-9"	∟
u1(E)	4	#6	13'-5"	∟
v(E)	68	#5	3'-9"	∟
v1(E)	68	#4	3'-1"	∟
v2(E)	68	#4	5'-3"	—
v3(E)	68	#4	6'-6"	—
v10(E)	40	#6	8'-8"	—
v11(E)	6	#6	8'-8"	—
v12(E)	34	#6	8'-10"	—
Concrete Structures		Cu. Yd.	105.6	
Reinforcement Bars, Epoxy Coated		Pound	9,130	
Furnishing Metal Shell Piles 12" X 0.250"		Foot	1,254	
Driving Piles		Foot	1,254	
Test Pile Metal Shells		Each	1	
Concrete Sealer		Sq. Ft.	698	

BOWMAN, BARRETT & ASSOCIATES INC.  
CONSULTING ENGINEERS  
Chicago, Illinois  
312.228.0100  
www.bbainc.com

USER NAME =	DESIGNED - TL	REVISED -
	CHECKED - BAK	REVISED -
PLOT SCALE =	DRAWN - TL	REVISED -
PLOT DATE = 03/29/2013	CHECKED - JGC	REVISED -

STATE OF ILLINOIS  
DEPARTMENT OF TRANSPORTATION

EAST ABUTMENT BILL OF MATERIALS  
STRUCTURE NO. 016-2470

SHEET NO. S-34 OF S-53 SHEETS

F.A.I. R.T.E.	SECTION	COUNTY	TOTAL SHEETS	SHEET NO.
94	2012-059-BR	COOK	631	409
CONTRACT NO. 60J12				

ILLINOIS FED. AID PROJECT