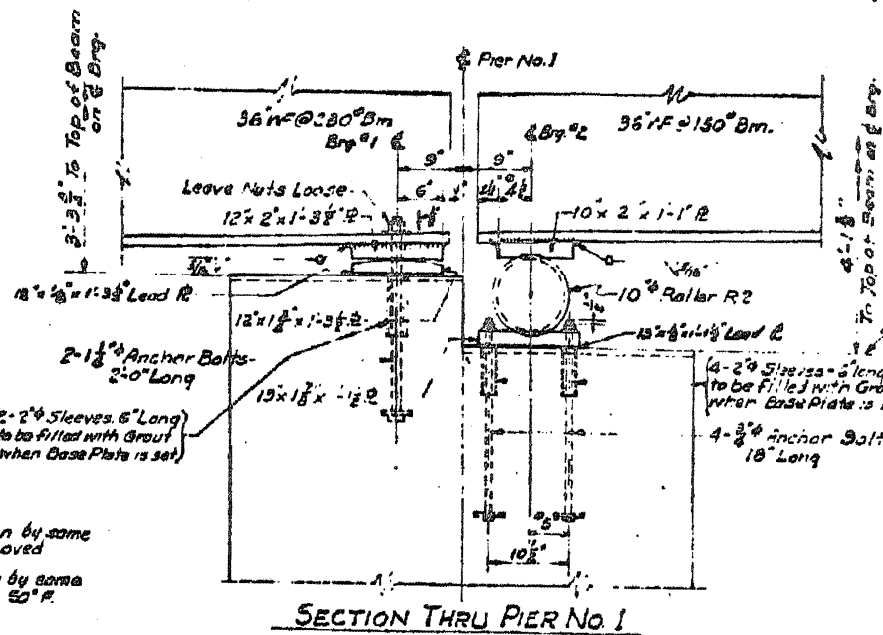
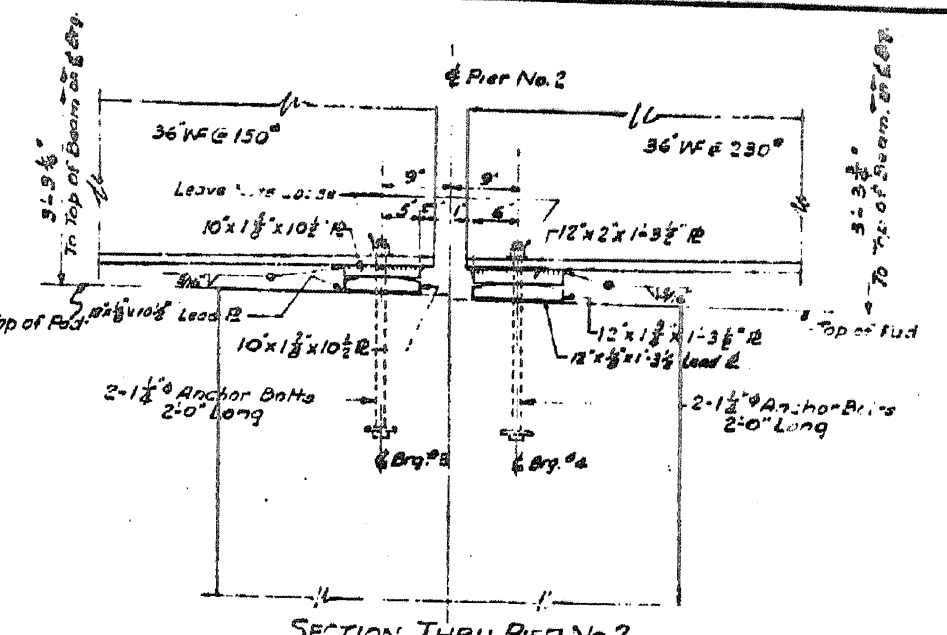


SECTION THRU ABUTMENT

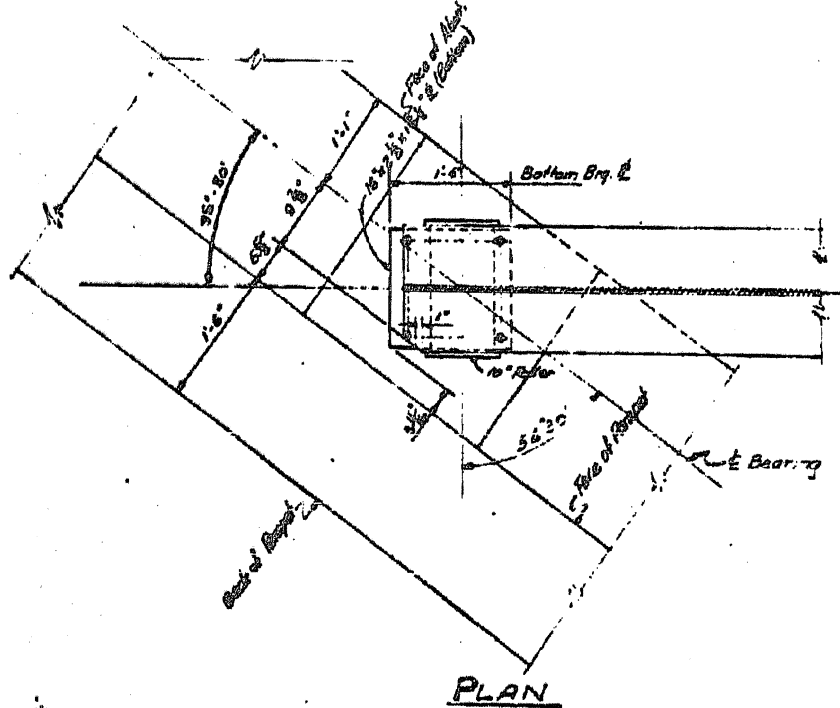
Note to Erector
 Increase each dimension by some amount if Abutment has moved or if Temp. is over 50°F
 Decrease each dimension by some amount if Temp. is below 50°F.



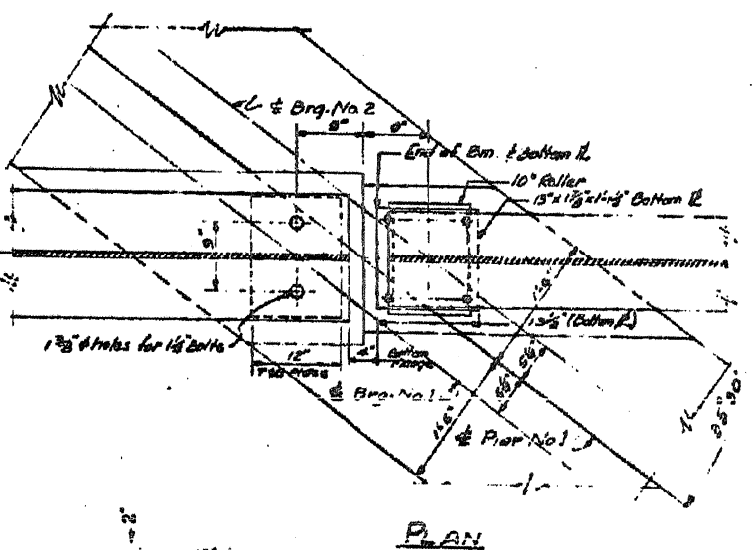
SECTION THRU PIER No. 1



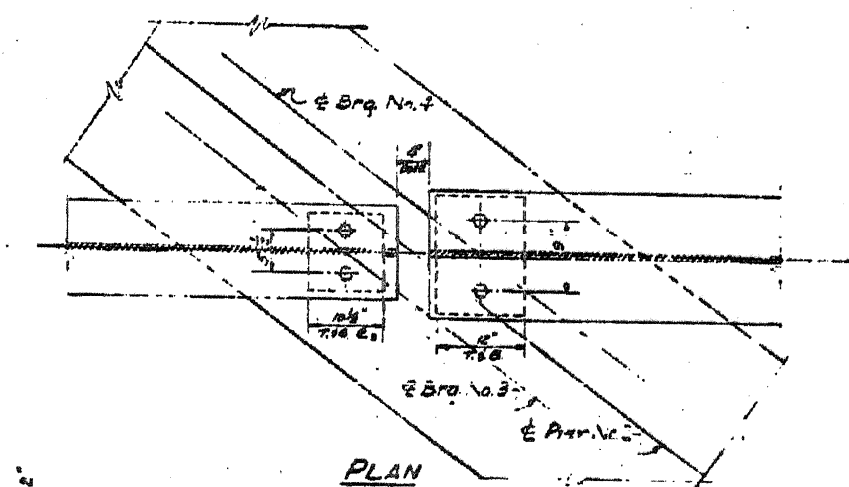
SECTION THRU PIER No. 2



PLAN



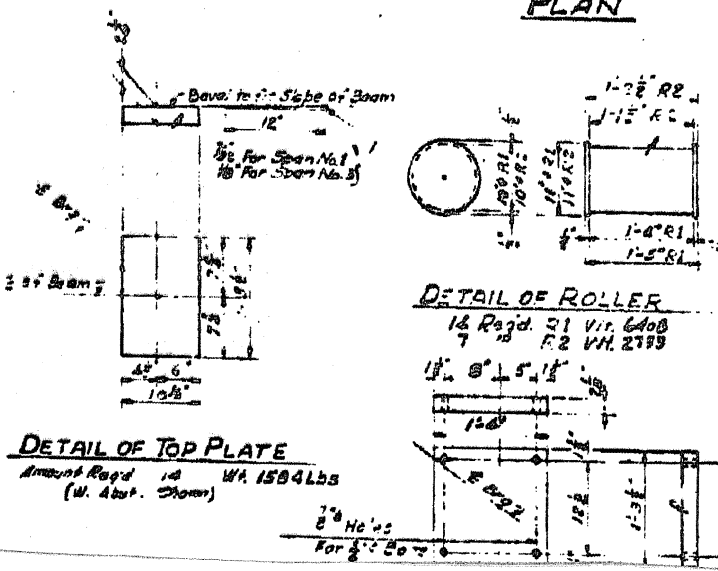
PLAN



PLAN

GENERAL NOTES:-

Rollers shall be turned down from a solid bar. For all plates in contact with the rollers the edges adjacent to the rollers shall be cut square, rolled or finished. Weights of rollers, steel plates, sleeves, lead plates and anchor bolts are included in weight of furnishing & erecting structural steel (Sheet No. 1.)

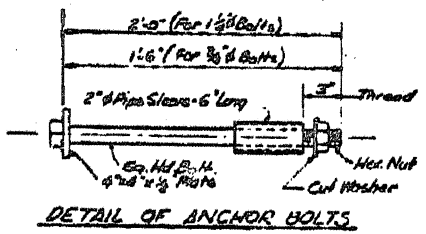


DETAIL OF TOP PLATE

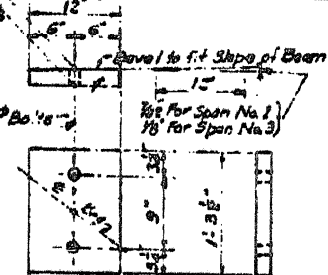
Amount Req'd 14 Wt. 1584 Lbs
 (W. Abut. Span)

DETAIL OF ROLLER

14 Req'd. 21 Wt. 640 Lbs
 R2 Wt. 2799

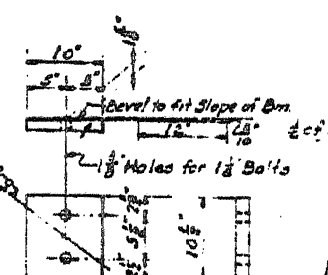


DETAIL OF ANCHOR BOLTS



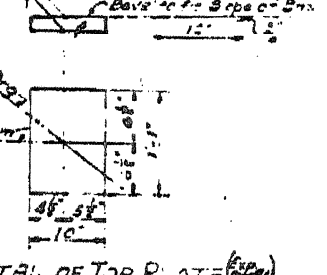
DETAIL OF TOP PLATE (Pier No. 1)

7 Req'd. Brq. No. 1 Wt. 1637 Lbs



DETAIL OF TOP PLATE (Pier No. 2)

7 Req'd. Brq. No. 2 Wt. 577 Lbs



DETAIL OF BOTTOM PLATE (Pier No. 1)

7 Req'd. Brq. No. 3 Wt. 777 Lbs (Includes Lead Plates)

ITEM	SIZE	NO REQ'D	WEIGHT
ANCHOR BOLTS	1 1/2" dia	22	400 Lbs
ANCHOR BOLTS	3/8" dia	87	215 Lbs
PLATES	4" x 18"	126	286 Lbs
PIPE SLEEVES	2" dia x 6"	126	230 Lbs
CUT WASHERS		126	26 Lbs
WEIGHT OF ROLLERS & PLATES			16,591 Lbs
Furnishing & Erecting Structural Steel (This Sheet)			15,855 Lbs

DEPARTMENT OF HIGHWAYS
 COOK COUNTY, ILLINOIS
 DANIEL BYRAN
 WILLIAM J. MORTIMER
 ROLLERS & BEARING PLATES
 EAST BOUND STONY ISLAND CONNECTOR
 OVER
 SOUTH ROUTE EXPRESSWAY