

2/22/08 PM

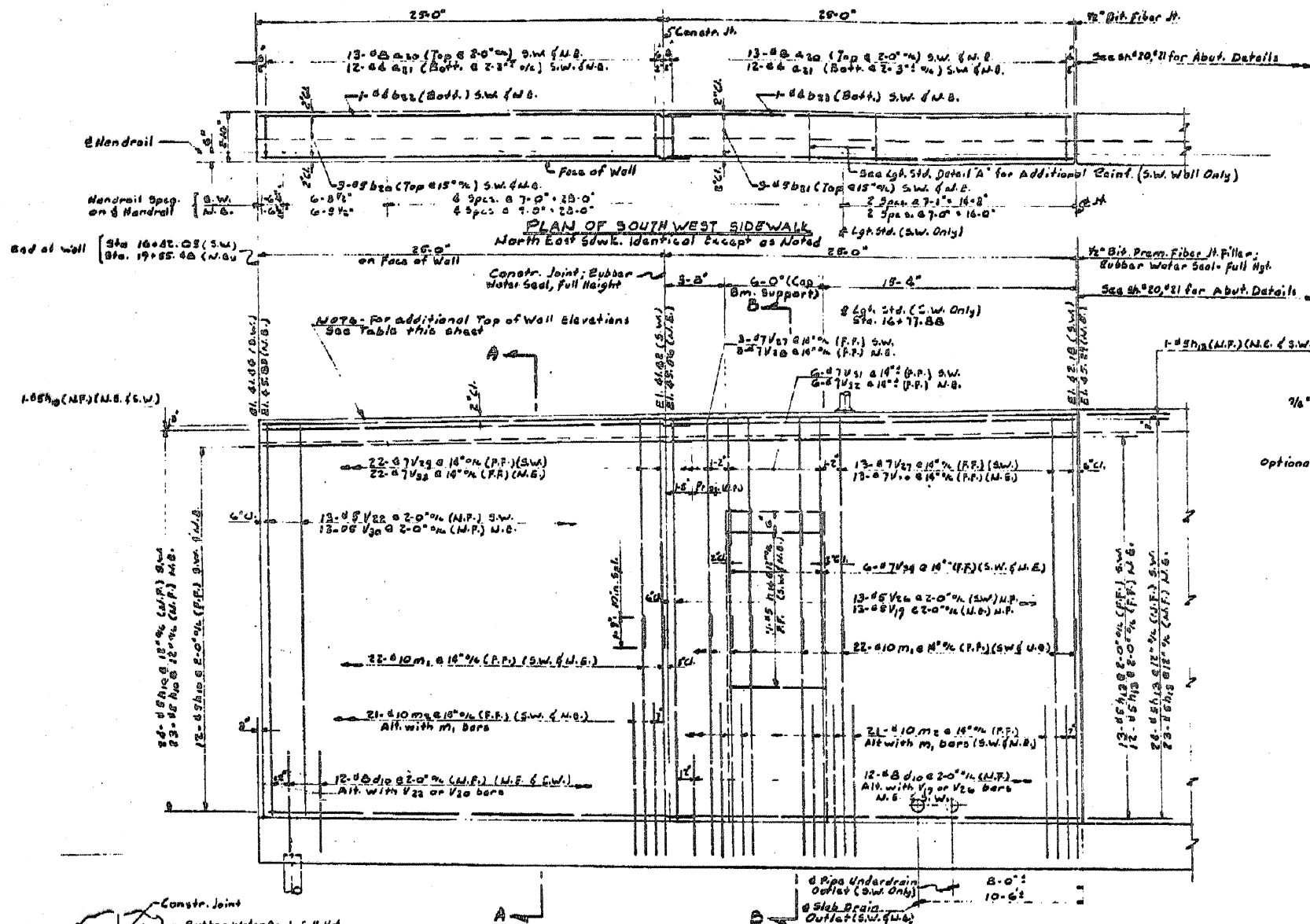
3/29/2013

SA1072.05-CADD Structure.dwg 0162470-CADD Sheets\062470-60J12-002-F10.dgn

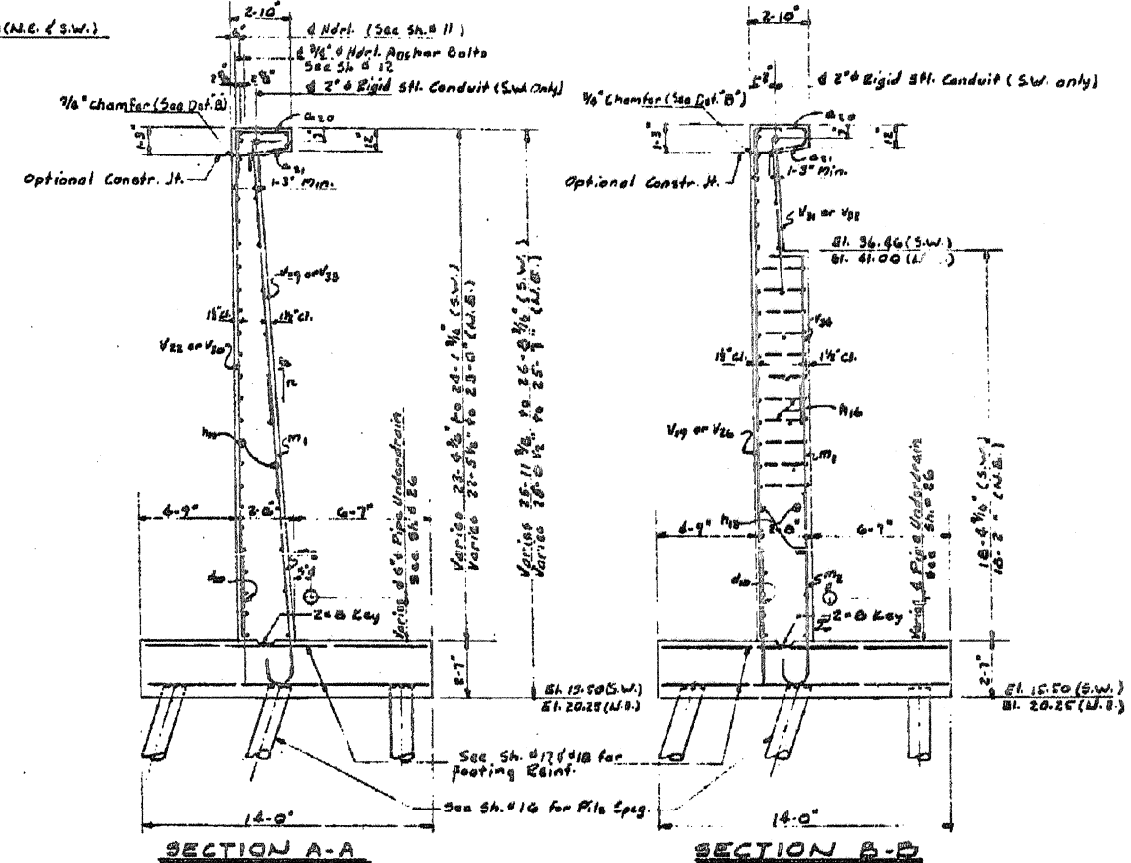


TOP OF WALL ELEVATIONS

Station	Elevation
16+82.41	42.044
16+72.41	41.901
16+62.41	41.758
16+52.41	41.601
16+42.09	41.450
19+15.44	45.204
19+05.44	45.107
19+35.44	45.009
19+45.44	44.912
19+55.44	44.815

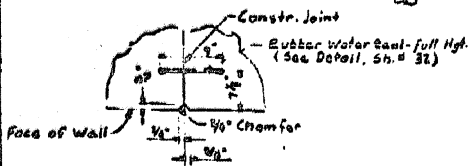


ELEVATION - SOUTH WEST WING WALL
North East Wing Wall Identical Except as Noted

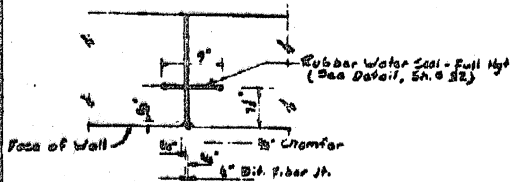


SECTION A-A

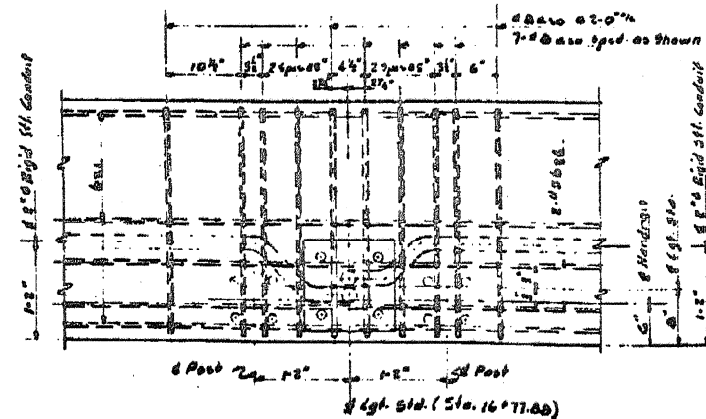
SECTION B-B



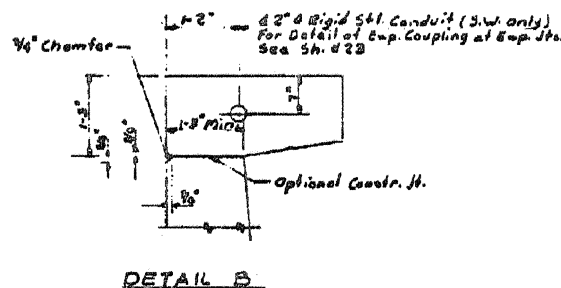
CONSTR. JOINT DETAIL



EXPANSION JOINT DETAIL



LIGHT STANDARD DETAIL 'A'



DETAIL B

Notes
 For Bill of Material & Bar Schedule see Sh. # 20
 For Pile Details, see Sh. # 29
 For Handrail Details & Light Std. Detail, see Sh. # 12
 For Drainage Details, see Sh. # 26
 For Footing Layout Details, see Sh. # 15
 For Detail of Rubber Water Seal, see Sh. # 32
 For Footing Details of Reinft., see Sh. # 16, #17 & #18
 South West Wing is on a combination grade line vertical curve and separation transition. See Sh. # 2
 For Expansion Coupling Detail for 2" Rigid Stl. Conduit, see Sh. # 23

REVISIONS

DATE	BY	DESCRIPTION

DEPARTMENT OF HIGHWAYS
 COOK COUNTY, ILLINOIS
 DANIEL RYAN
 SUPERVISOR OF CONSTRUCTION
 WILLIAM J. MORTIMER
 SUPERINTENDENT OF HIGHWAYS

SW WING WALL DETAILS
EAST BOUND STONY ISLAND CONNECTOR
 OVER
SOUTH ROUTE EXPRESSWAY

PROJECT: 90-3(60) 113
 SCALE: 1/4" = 1'-0"
 APPROVED: [Signature] 90
 COUNTY HIGHWAY: SW-1313
 SHEET NO.: 26 OF 27
 DRAWING NO.: 640-5

BOWMAN, BARRETT & ASSOCIATES INC.
 CONSULTING ENGINEERS
 Chicago, Illinois
 312.228.0100
 www.bbainc.com

USER NAME =	DESIGNED -	REVISED -
PLOT SCALE =	CHECKED - BAK	REVISED -
PLOT DATE = 03/29/2013	DRAWN -	REVISED -
	CHECKED -	REVISED -

STATE OF ILLINOIS
 DEPARTMENT OF TRANSPORTATION

EXISTING PLANS (FOR INFORMATION ONLY)
 STRUCTURE NO. 016-2470

SHEET NO. S-52 OF S-53 SHEETS

F.A.I. RTE.	SECTION	COUNTY	TOTAL SHEETS	SHEET NO.
94	2012-059-BR	COOK	631	427
CONTRACT NO. 60J12				

ILLINOIS FED. AID PROJECT