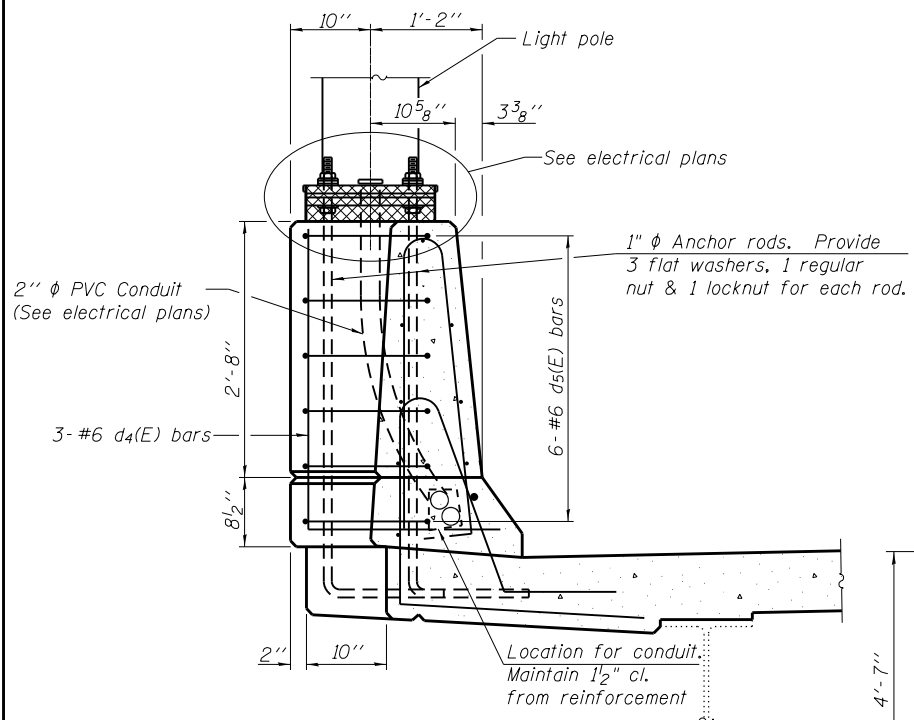


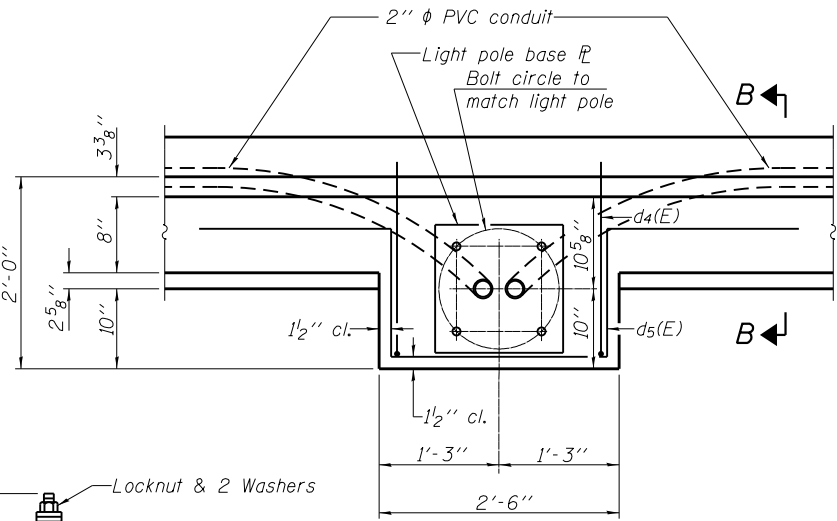
2:47:56 PM

4/18/2013

S:\1072\_05\_CADD\Structure\1 SN 0162440.CADD Sheets\0162440-60J12-018-SD03.dgn

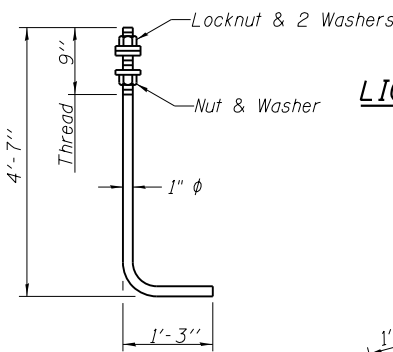


**SECTION B-B**



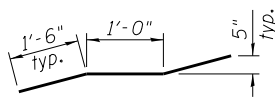
**LIGHT POLE FOUNDATION PLAN**

Note:  
Cost of anchor rods is included with  
Concrete Superstructure.

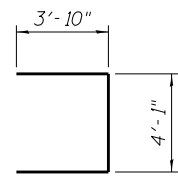


**ANCHOR ROD**

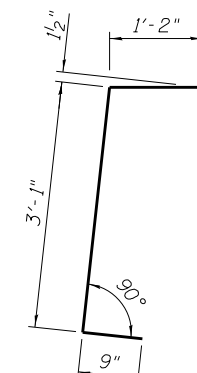
(ASTM F 1554 Grade 105, full length  
hot dipped galvanized)



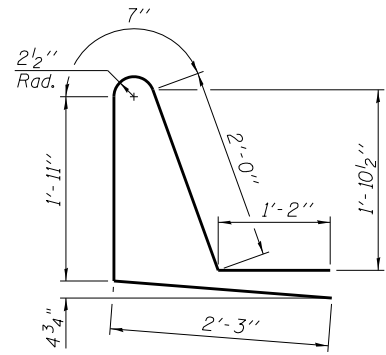
**BAR m4(E)**



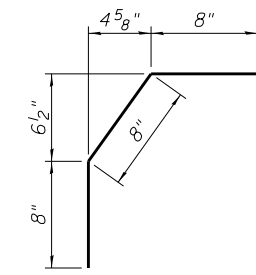
**BAR s(E)**



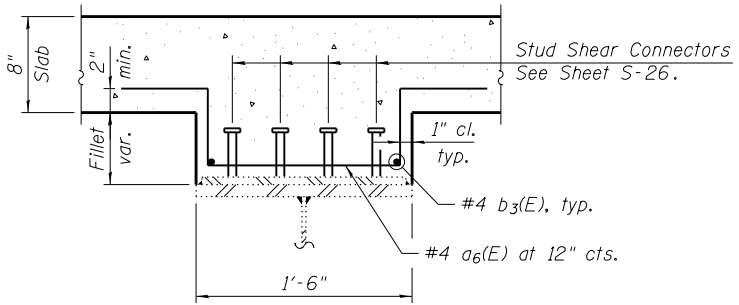
**BAR d2(E)**



**BAR d1(E)**



**BAR d3(E)**



**DEEP FILLET SECTION**  
(For fillet heights greater than 6")

Deep Fillet Notes:

- Bars indicated thus 2x3- #4 etc. indicates 2 lines of bars with 3 lengths per line.
- Limits of deep fillets are estimated and are subject to variation. The Contractor shall field verify fillet depths and make necessary approved adjustments to deep fillet reinforcement bars prior to pouring the deck. Such adjustments shall not be cause for additional compensation for a change in scope of the work, however, the Contractor will be paid for the quantity actually furnished at the unit price bid for the work.

**MIN. BAR LAP**

(Deep fillet reinforcement)  
#4 - 2'-7"

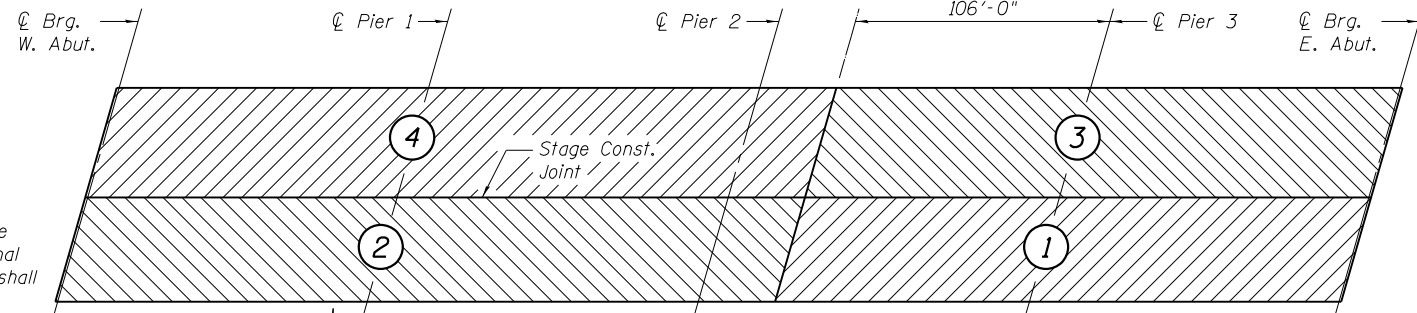
**DEEP FILLET REINFORCEMENT DATA**

Location	Estimated Limits	Length	Transverse bars	Longitudinal bars
Girder 5	E. end of deck to Sta. 932+91	190'-0"	191- #4 a6(E)	2x9- #4 b3(E)
	Sta. 934+74 to W. end of deck	165'-0"	166- #4 a6(E)	2x8- #4 b3(E)
Girder 8	E. end of deck to Sta. 932+41	145'-0"	146- #4 a6(E)	2x7- #4 b3(E)
	Sta. 934+92 to Sta. 935+15	23'-0"	24- #4 a6(E)	2x1- #4 b3(E)
Girder 9	E. end of deck to Sta. 932+44	150'-0"	151- #4 a6(E)	2x7- #4 b3(E)

**Optional Deck Pouring Sequence Notes:**

When the deck pour is stopped for the day at the transverse bonded construction joint in the optional deck pouring sequence as shown, the next pour shall not be made until both of the following are met:

- At least 72 hours shall have elapsed from the end of the previous pour.
- The concrete strength shall have attained a minimum flexural strength of 650 psi or a minimum compressive strength of 3500 psi.



**OPTIONAL DECK POURING SEQUENCE**

**SUPERSTRUCTURE  
BILL OF MATERIAL**

Bar	No.	Size	Length	Shape
a(E)	1724	#5	23'-3"	
a1(E)	1935	#5	16'-7"	
a2(E)	1724	#5	24'-4"	
a3(E)	1935	#5	17'-4"	
a4(E)	862	#6	6'-6"	
a5(E)	16	#5	1'-6"	
a6(E)	678	#4	3'-10"	
b(E)	1840	#5	30'-0"	
b1(E)	1672	#5	27'-7"	
b2(E)	792	#6	29'-3"	
b3(E)	64	#4	23'-8"	
d(E)	1174	#5	6'-10"	
d1(E)	1174	#5	7'-11"	
d2(E)	1174	#5	5'-0"	
d3(E)	1174	#5	2'-0"	
d4(E)	15	#6	5'-1"	
d5(E)	30	#6	8'-11"	
e(E)	352	#4	19'-8"	
e1(E)	260	#4	17'-8"	
e2(E)	32	#4	29'-2"	
e3(E)	32	#4	26'-5"	
e4(E)	32	#8	31'-6"	
e5(E)	16	#8	19'-7"	
e6(E)	32	#8	28'-10"	
e7(E)	8	#8	17'-8"	
m(E)	104	#6	25'-10"	
m1(E)	24	#6	3'-2"	
m2(E)	60	#6	7'-4"	
m3(E)	72	#6	6'-6"	
m4(E)	130	#5	4'-0"	
s(E)	140	#5	11'-9"	
s1(E)	140	#5	14'-11"	
u(E)	140	#5	8'-2"	
Reinforcement Bars, Epoxy Coated	Pound		359,220	
Concrete Superstructure	Cu. Yds.		1788.8	
Bridge Deck Grooving	Sq. Yd.		4,718	
Protective Coat	Sq. Yd.		6,003	

BOWMAN, BARRETT & ASSOCIATES INC.  
CONSULTING ENGINEERS  
Chicago, Illinois  
312.228.0100  
www.bbainc.com

USER NAME =	DESIGNED - TL	REVISED -
PLOT SCALE =	CHECKED - BAK	REVISED -
PLOT DATE = 03/29/2013	DRAWN - TL	REVISED -
	CHECKED - JGC	REVISED -

STATE OF ILLINOIS  
DEPARTMENT OF TRANSPORTATION

SUPERSTRUCTURE DETAILS III  
STRUCTURE NO. 016-2440

SHEET NO. S-18 OF S-47 SHEETS

F.A.I. RTE.	SECTION	COUNTY	TOTAL SHEETS	SHEET NO.
94	2012-059-BR	COOK	631	446
CONTRACT NO. 60J12				

ILLINOIS FED. AID PROJECT