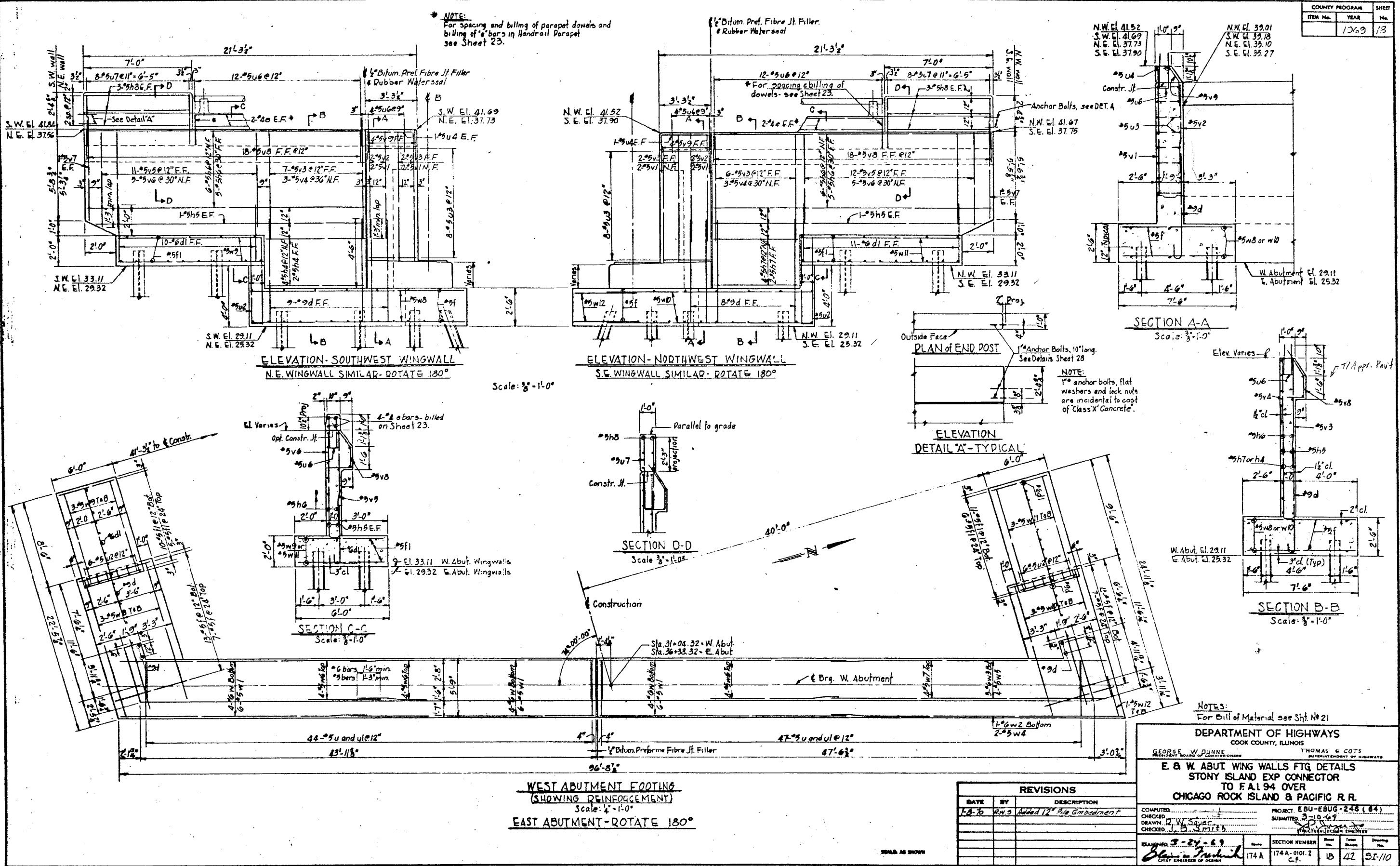


COUNTY PROGRAM		SHEET
ITEM No.	YEAR	No.
1069	13	13

NOTE:
For spacing and billing of parapet dowels and billing of #6 bars in Handrail Parapet see Sheet 23.



NOTE:
1" anchor bolts, flat washers and lock nuts are incidental to cost of 'Class X' Concrete.

NOTES:
For Bill of Material see Sht. No 21

DEPARTMENT OF HIGHWAYS
COOK COUNTY, ILLINOIS

GEORGE W. DUNNE
REGISTERED BOARD OF PROFESSIONAL ENGINEERS

THOMAS G. COTS
SUPERINTENDENT OF HIGHWAYS

E & W ABUT WING WALLS FTG DETAILS
STONY ISLAND EXP CONNECTOR
TO I-94 OVER
CHICAGO ROCK ISLAND & PACIFIC R.R.

PROJECT: EBU-EBUG-248 (84)
SUBMITTED: 3/23/09

COMPUTED: _____
CHECKED: _____
DRAWN: D.W. Sayer
CHECKED: J.B. Smith

EXAMINED: 3-24-09
Blair J. Frueh
CHIEF ENGINEER OF DESIGN

DATE	BY	DESCRIPTION
1-2-70	RM.S	Added 12" Dia Embedment

SECTION NUMBER	Sheet No.	Total Sheets	Sheet No.
174 A	174 A-0101.2	18	41

3/29/2013

3/29/2013

SA\1072_05_CADD\Structure\1 SN 0162440\CADD Sheets\0162440-60J12-045-F185.dgn

BOWMAN, BARRETT & ASSOCIATES INC.
CONSULTING ENGINEERS
Chicago, Illinois
312.228.0100
www.bbainc.com

USER NAME =	DESIGNED -	REVISED -
PLOT SCALE =	CHECKED - BAK	REVISED -
PLOT DATE = 03/29/2013	DRAWN -	REVISED -
	CHECKED -	REVISED -

STATE OF ILLINOIS
DEPARTMENT OF TRANSPORTATION

EXISTING PLANS (FOR INFORMATION ONLY)
STRUCTURE NO. 016-2440

SHEET NO. S-46 OF S-47 SHEETS

F.A.I. RTE.	SECTION	COUNTY	TOTAL SHEETS	SHEET NO.
94	2012-059-BR	COOK	631	474

CONTRACT NO. 60J12
ILLINOIS FED. AID PROJECT