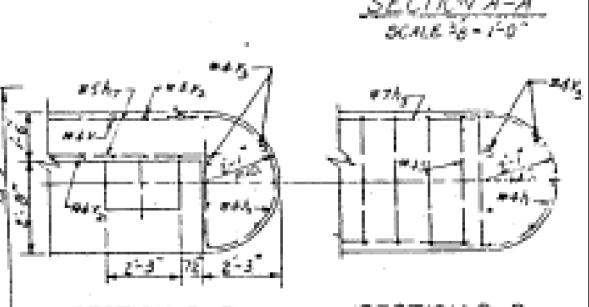
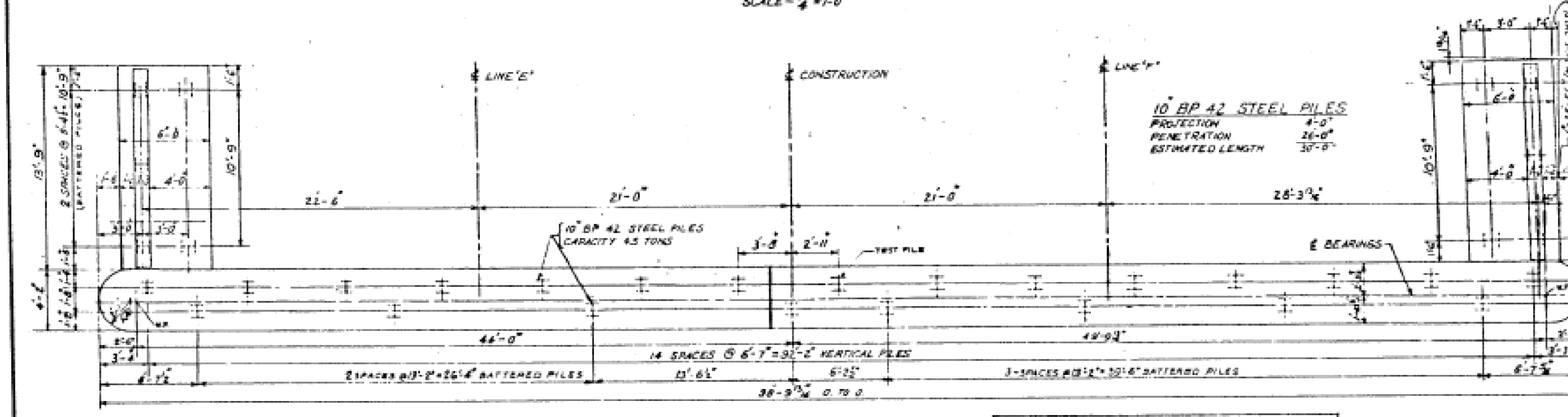
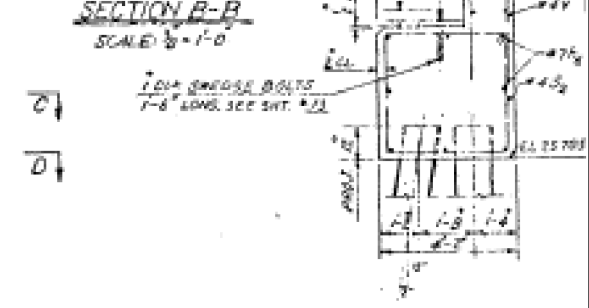
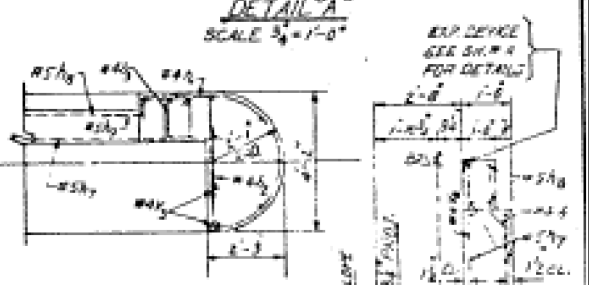
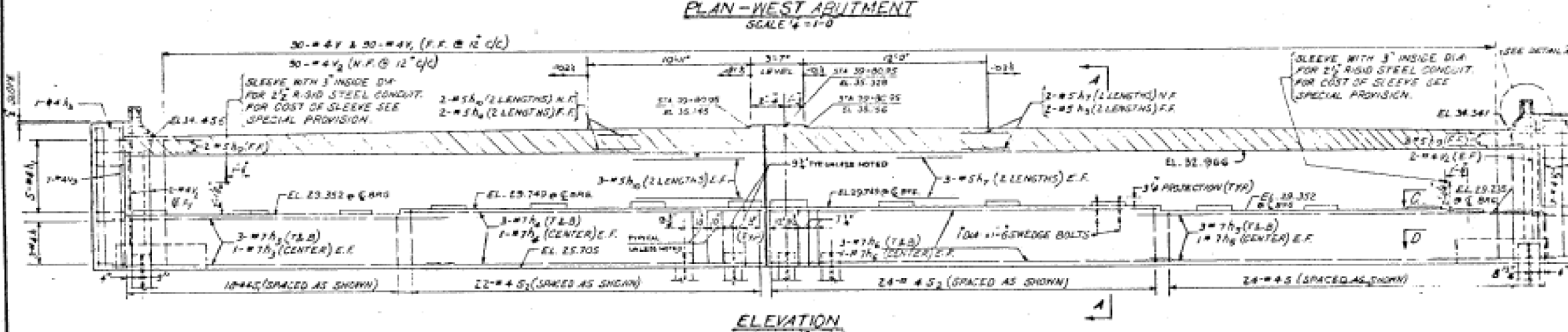
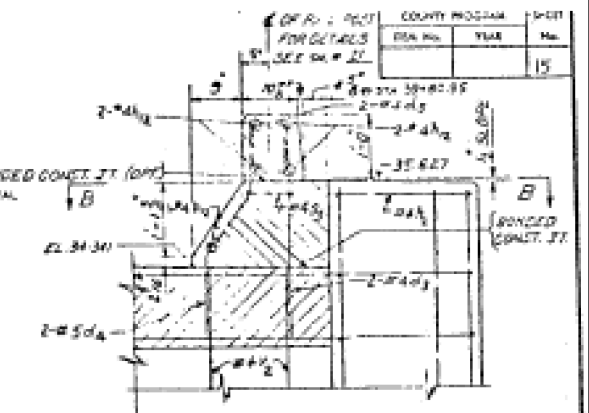
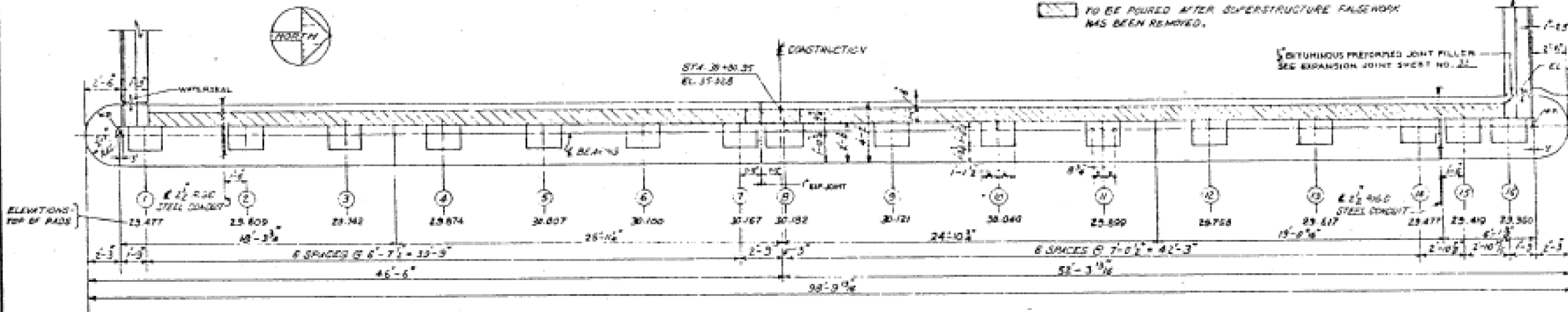


NOTE

TO BE POURED AFTER SUPERSTRUCTURE FALSEWORK HAS BEEN REMOVED.



NOTES

FOR CLASS 'A' EXCAVATION FOR STRUCTURES SEE SHEET # 25.
 FOR DETAILS OF WING WALLS SEE SHTS # 12 & 13.
 FOR BAR LIST SEE SHT # 24.
 FOR BEARING DETAILS SEE SHEETS # 12, 13 & 14.
 FOR PILE DETAILS SEE SHEET # 21.
 FOR BRIDGE SEAT SEALANT SEE SPECIAL PROVISION.

BILL OF MATERIAL FOR WEST ABUTMENT

FLYING WINGS STEEL PILES (10" DP 42)	950	LN. FT.
DRIVING STEEL PILES (10" DP 42)	950	LN. FT.
TEST PILES	1	EACH
CLASS 'A' CONCRETE	98.7	CU. YDS.
REINFORCEMENT BARS	6,910	LBS.
BRIDGE SEAT SEALANT	23	60 YDS

REVISIONS

DATE	BY	DESCRIPTION
7-28-10	GRK	1st of 2 piles removed as requested by State. Ring wall retaining structure as requested by State.

DEPARTMENT OF HIGHWAYS
 COOK COUNTY, ILLINOIS

GEORGE W. DUNNE
 COUNTY BOARD OF SUPERVISORS

THOMAS S. COO'S
 COUNTY BOARD OF SUPERVISORS

**WEST ABUTMENT DETAILS
 STONY ISLAND CONNECTOR TO FA.I.94
 OVER ACCESS ROAD TO FRONTAGE ROAD**

COMPUTED BY: _____ PROJECT # 2011-248-43
 DRAWN BY: _____ SUBMITTED
 CHECKED BY: _____ APPROVED BY: _____
 CHIEF ENGINEER: _____

DATE: 7/24/10 SECTION NUMBER: 174 A
 SHEET NO. 514 OF 518 SHEETS